



2019

europa



legendary lands await

It's like stepping into the pages of a fairytale. Wandering through charming towns filled with cobblestone streets. Walking in the footsteps of kings and queens through medieval castles. Cultures as fascinating as the timeless relics you'll discover. Let Europe share its story and stir your soul. That's when you become a part of history — come back new.®



WHAT'S INSIDE

Cruising the Region	1
Explore the Ports: Northern Europe	2
Northern Europe Cruises	6
Explore the Ports: Mediterranean	14
Mediterranean Cruises	18
Cruisetours	30
Shore Excursions	32
The Princess® Experience	34
Staterooms	38
The Princess Fleet	40

extra savings for our valued past guests

LIMITED-TIME OFFER!

Book any of these vacations to enjoy Princess Cruises Captain's Circle™ Launch Savings

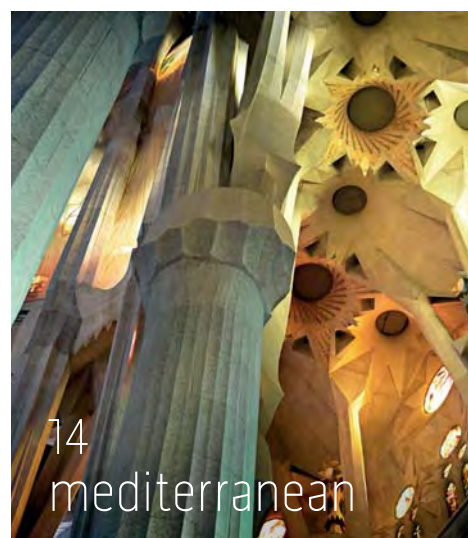
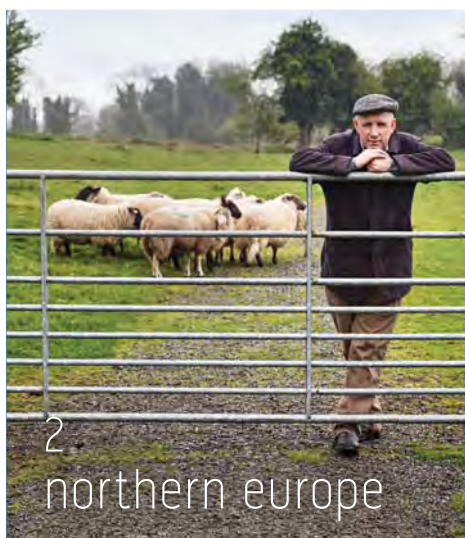
- An extra savings of up to \$200 per person*
- Enjoy a 2-for-1 deposit (10% of cruise fare)

Call your travel agent or contact Princess for details at 6922 6788

*Princess Cruises Captain's Circle Launch Savings of up to \$200 per person discount is applicable in all categories and combinable only with Launch Fares and Group Fares. Specific discount amounts vary by itinerary and cruise length. Regional and other past guest promotions or "new booking only" promotions are not combinable with the discount. Princess Cruises Captain's Circle Launch Savings is not applicable to third- and fourth-berth guests. Reduced deposit offer is 10% per person and does not apply to third- and fourth-berth guests. Reduced deposit is not combinable with other reduced deposit offers. Call 6922 6788 for details. Offer expires August 31, 2018 for 2019 sailings. Promotion code is PA1.

see the extraordinary

The mystery of ancient ruins. The majesty of nature's exquisite locales. The intrigue of these alluring landmarks is beyond compare. Experience the great wonders of Northern Europe and the Mediterranean by visiting treasured UNESCO World Heritage Sites during your unforgettable shore excursions.



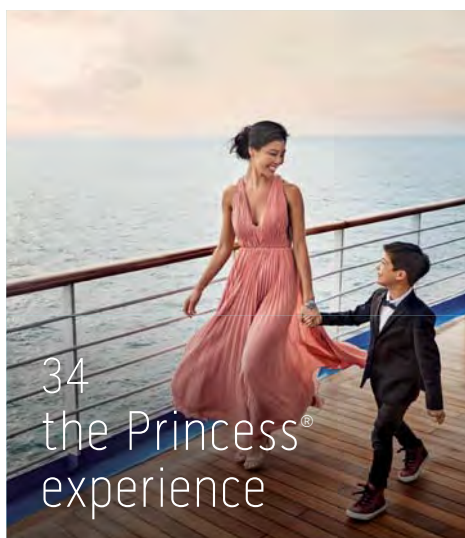
be immersed on shore

Europe beckons with glorious history, fabled cities and spellbinding beauty. With Princess®, you'll get closer to Europe's historical sites and incredible scenery with our unforgettable shore excursions and cruisetours.



unforgettable experiences on board

From relaxing pursuits and enriching activities to world-class entertainment and gourmet cuisine, when you step aboard your Princess ship, you are setting a course for a world of wonderful new discoveries.



more ashore

Our itineraries are crafted to give you more opportunities to experience the history, culture and flavors of the region. With port calls that are either **LATE NIGHT** (departing 9 p.m. or later) or **OVERNIGHT**, you can see the sights during the day and experience the nightlife in the evening.

SHARE YOUR STORY

Connect with Princess and fellow guests via Facebook, YouTube, Instagram, Twitter, Pinterest and Google+.

Share stories of your Princess adventures, watch videos and much more.



#comebacknew

northern europe

explore the ports

GREENLAND



Qaqortoq

Meaning “white palace” in Greenlandic, this small town of about 3,400 is the cultural and commercial center of Southern Greenland. Traditional culture has been remarkably preserved here — the centuries-old Inuit skills of hunting, kayaking and fishing are still revered in this unique place.

Qaqortoq

Nanortalik

Akureyri

Akureyri's famed attractions include ethereal lava spires, geothermal natural baths and the extraordinary Godafoss Waterfall — known as the “Waterfall of the Gods.”



Ísafjörður

Grundarfjörður

Akureyri

Seyðisfjörður

ICELAND

Reykjavík



Reykjavík

Fall in love with a tiny city that boasts Viking history. Pristine arctic air, brilliant sunlight and natural beauty captivate visitors, while the Blue Lagoon offers an incomparable spa experience.

Liverpool

Hometown of the Beatles, this maritime city features a famed waterfront on the River Mersey. Relish in Europe's finest paintings, drawing and sculptures at the Walker Art Gallery.

Faroe Islands
(Tórshavn)



Portree
(Isle of Skye)

Glasgow
(Greenock)

ways to sail

The excitement starts here — at our departure ports — where you'll begin your unforgettable Northern Europe cruise vacation. Begin your seagoing journey from one of these cities:

Berlin (Warnemünde)
Copenhagen
Dublin
Ft. Lauderdale
Helsinki
London (Southampton)
London (Dover)
New York
Paris/Normandy (Le Havre)
St. Petersburg

Belfast

Visit the Titanic Belfast museum, located on the shipyard site where the iconic vessel was built. You'll be immersed back in time as you discover interactive galleries encompassing the stories of one of the most famous ships in history.



Atlantic
Ocean

Dublin

Travel down cobbled streets to fabled pub haunts of legendary poets and savor a pint. Walk along the River Liffey and then visit the Guinness Storehouse in this lovely cosmopolitan city.



NORTHERN
IRELAND

Belfast

Dublin

Cork
(Cobh)

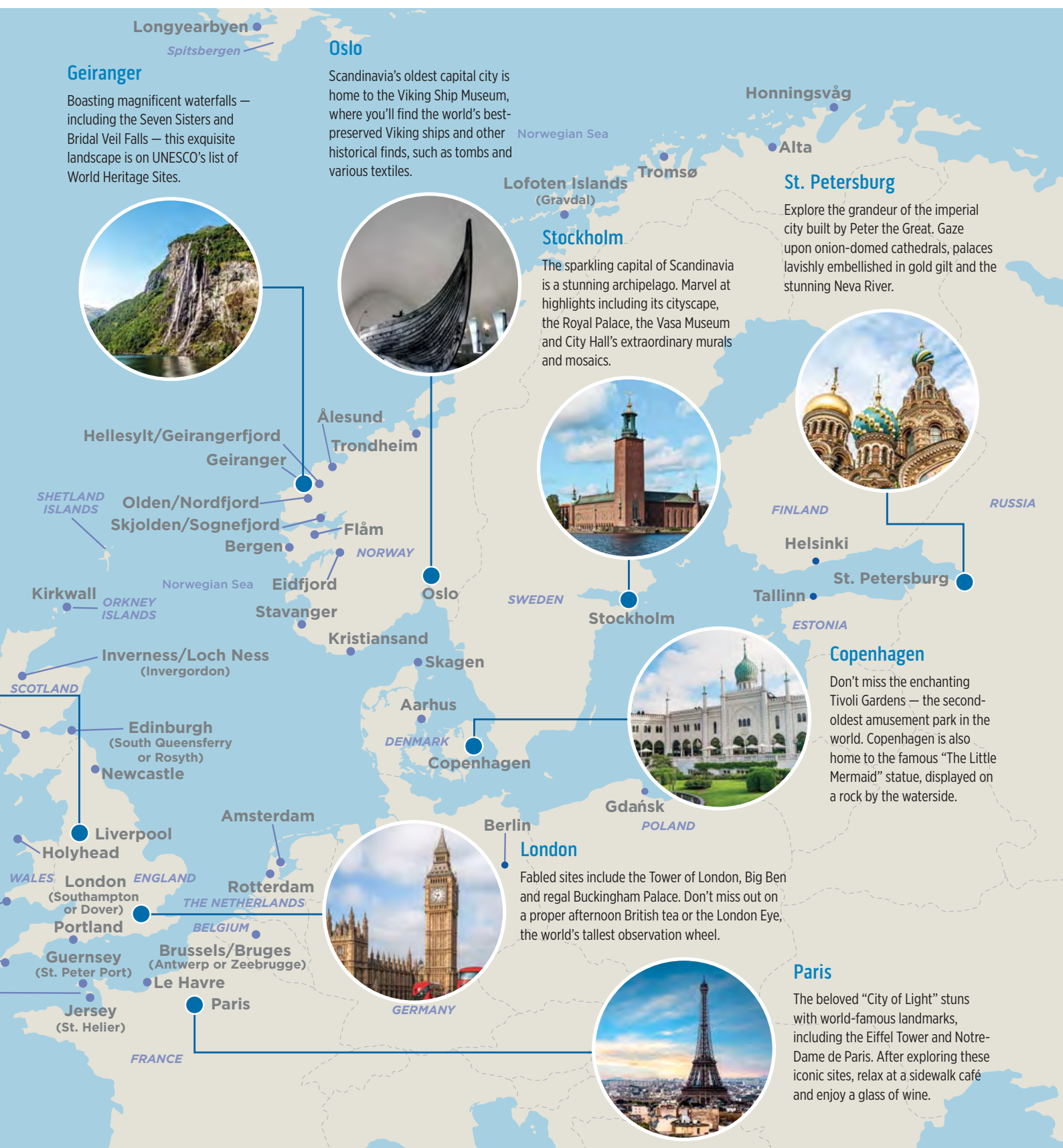
Waterford

Milford Haven

Cornwall
(Falmouth)

CHANNEL
ISLANDS

Wander through opulent Russian palaces where czars and czarinas once dwelled. View the magnificent City of Light from the heights of *La Tour Eiffel*. Relax in the warm turquoise waters of Iceland's Blue Lagoon while gazing at a snowy landscape. From wild Viking landscapes to Baroque splendors, the jewels of Northern Europe sparkle as brightly as the Northern Lights.



sumptuous sites in northern europe



Gaze upon the opulence of a royal palace created by the Sun King. Feel the grace inside a centuries-old abbey, host to some of the world's grandest royal weddings. Listen as the cobblestone streets of a 12th-century mercantile city reverberate with the sounds of history. The stately UNESCO World Heritage Sites of Northern Europe reveal extraordinary treasures you'll never forget.

Giant's Causeway

BELFAST, NORTHERN IRELAND

Giant's Causeway is a spectacular rock formation that jets straight above the sea and rests on the Antrim coast of Northern Ireland. Created over 60 million years ago from a volcanic eruption, this UNESCO World Heritage Site is steeped in myths and can be explored during a Local Connections Shore Excursion. Legend has it that the area was the stomping ground of giant Finn McCool, who lived in these parts nearly 2,000 years ago.



La Grand-Place

BRUSSELS, BELGIUM

A homogeneous body of public and private buildings, this UNESCO World Heritage Site is one of the most memorable landmarks in Belgium. Surrounded by guild houses, the city's town hall and the famous Bread House, La Grand-Place stuns with architecture dating back to the Baroque, Gothic and Louis XIV era. The former food market is now a popular spot for fine Belgium cuisine and historical sightseeing.

Westminster Abbey

LONDON, UNITED KINGDOM

Located in the heart of London next to the famed Big Ben, Westminster Abbey is known as one of the world's greatest churches. The church is home to treasured paintings, stained glass, textiles and historical artifacts. Thousands of years old, more than 3,000 people have been buried or commemorated at Westminster Abbey, many of them among the most significant in the nation's history.



Thingvellir National Park

REYKJAVIK, ICELAND

The only UNESCO World Heritage Site on the Icelandic mainland, this national park features stunning scenic landscape, significant history and unique geology. Located on active volcanic land, the park is surrounded by high cliffs, mountains and grass-covered lava fields with a magnificent natural backdrop of open land.

Palace of Versailles

PARIS, FRANCE

One of the largest and most opulent castles in the world, the Palace of Versailles is a historical, royal château located in the Île-de-France region. Now a popular museum for visitors, the site was first built by Louis XIII as a hunting lodge. This must-see landmark boasts 18th-century French architecture and art complemented by manicured lawns and stunning landscapes.

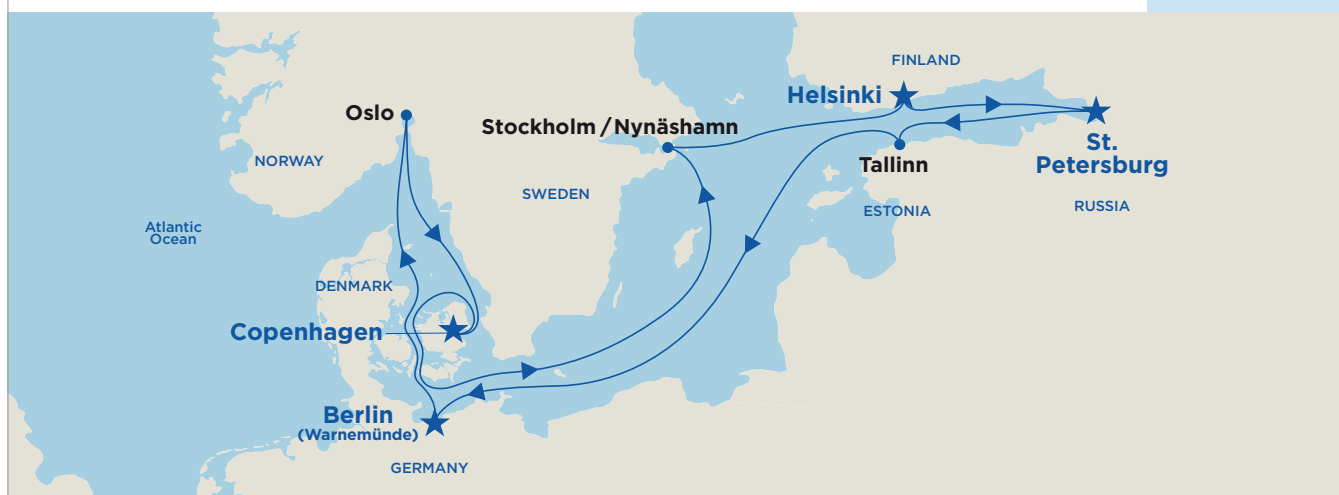


explore the top of the world

Timeless cities. Medieval streets and palaces. A region blossoming with imperial history. With multiple sailing dates and ports to choose from, we make it easy to discover the pristine beauty of Scandinavia & Russia.

Scandinavia & Russia

10/11 days



more ashore

Copenhagen > Stockholm/Nynäshamn > Helsinki > St. Petersburg **OVERNIGHT** > Tallinn > Berlin (Warnemünde) **LATE NIGHT** > Oslo > Copenhagen

Interior fares from*	Balcony fares from*	Mini-Suite fares from*	Club Class fares from*	Suite fares from*
\$2,834	\$3,576	\$4,251	\$4,886	\$6,884

Roundtrip from Copenhagen

2019 DEPARTURES	<i>Regal Princess®</i>			
Apr 29 MON	Jun 1 SAT	Jul 4 THU	Aug 6 TUE	
May 10 FRI	Jun 12 WED	Jul 15 MON	Aug 17 SAT	
May 21 TUE	Jun 23 SUN	Jul 26 FRI	Aug 28 WED	

Roundtrip from Berlin

2019 DEPARTURES	<i>Regal Princess®</i>			
May 7 TUE	Jun 9 SUN	Jul 12 FRI	Aug 14 WED	
May 18 SAT	Jun 20 THU	Jul 23 TUE	Aug 25 SUN	
May 29 WED	Jul 1 MON	Aug 3 SAT		

Roundtrip from Helsinki new

2019 DEPARTURES	<i>Regal Princess®</i>			
May 2 THU	Jun 4 TUE	Jul 7 SUN	Aug 9 FRI	
May 13 MON	Jun 15 SAT	Jul 18 THU	Aug 20 TUE	
May 24 FRI	Jun 26 WED	Jul 29 MON		

Roundtrip from St. Petersburg*

2019 DEPARTURES	<i>Regal Princess®</i>			
May 4 SAT	Jun 6 THU	Jul 9 TUE	Aug 11 SUN	
May 15 WED	Jun 17 MON	Jul 20 SAT	Aug 22 THU	
May 26 SUN	Jun 28 FRI	Jul 31 WED		

*Fares based on 4/29/19 sailing. Fares for other dates may vary. Taxes, Fees and Port Expenses of up to \$284 are additional and subject to change.

*Roundtrip St. Petersburg sailings are 10 days, port order varies. No More Ashore Overnight in St. Petersburg. Due to operational considerations, the port of Nynäshamn may be used as access to Stockholm.



In St. Petersburg's relatively short history — the city is younger than New York — it has witnessed the rise and fall of Imperial Russia, three shattering revolutions and civil war. However, Russia's "Window to the West" still shines as a beautiful metropolis, boasting impressive architecture. Perhaps most iconic is the Church of the Savior on Spilled Blood, which was built on the spot where Emperor Alexander II was assassinated in March 1881. Both the interior and exterior of the church are decorated with incredibly detailed mosaics, designed and created by the most prominent Russian artists of the day.

more ashore

See the sights during the day and experience the nightlife after dark with Late Night (9 p.m. or later) or Overnight calls.

Scandinavia

Roundtrip from London

7 days



more ashore

London (Southampton) > Brussels/Bruges (Zeebrugge) > Copenhagen **LATE NIGHT** > Skagen > Oslo > London (Southampton)

Interior fares from*	Balcony fares from*	Mini-Suite fares from*	Club Class fares from*	Suite fares from*
\$1,551	\$2,429	\$2,834	\$3,239	\$4,859

2019 DEPARTURES | *Sapphire Princess®*
Apr 27 SAT Jun 29 SAT

*Fares based on 4/27/19 sailing. Fares for other dates may vary. Taxes, Fees and Port Expenses of up to \$169 are additional and subject to change. See page 31 for more details.



Bruges, Belgium

Baltic Heritage

Roundtrip from London

14 days



more ashore

London (Southampton) > Brussels/Bruges (Zeebrugge) > Copenhagen > Stockholm > Tallinn > St. Petersburg **OVERNIGHT** > Helsinki > Gdansk (Gdynia) > London (Southampton)

Interior fares from*	Balcony fares from*	Mini-Suite fares from*	Club Class fares from*	Suite fares from*
\$3,036	\$4,859	\$5,736	\$6,614	\$9,449

2019 DEPARTURES | *Sapphire Princess®*
May 4 SAT Jun 1* SAT Aug 31 SAT

*Fares based on 5/4/19 sailing. Fares for other dates may vary. Taxes, Fees and Port Expenses of up to \$297 are additional and subject to change. See page 31 for more details.

*Port order varies.

Scandinavia & Russia Collection

Roundtrip from London

14 days



more ashore

London (Dover) > Copenhagen **LATE NIGHT** > Riga > Tallinn > St. Petersburg **OVERNIGHT** > Helsinki > Stockholm **OVERNIGHT** > Kiel Canal transit > Amsterdam > London (Dover)

Interior fares from*	Balcony fares from*	Mini-Suite fares from*	Club Class fares from*	Suite fares from*
\$5,264	\$6,681	\$7,964	\$9,044	\$10,259

2019 DEPARTURES | *Pacific Princess®*
Jul 16* TUE Sep 23 MON

*Taxes, Fees and Port Expenses of up to \$506 are additional and subject to change. See page 31 for more details.

*Rotterdam replaces Amsterdam.



An old harbor and maritime city, Copenhagen charms visitors with its idyllic canals. One of the best ways to experience the beauty of the canals is via boat or during a romantic gondola tour. Along the way, you can see historical churches, castles and stunning homes.



British Isles

12 days



more ashore

London (Southampton) > Guernsey (St. Peter Port) > Cork (Cobh - for Blarney Castle) > Dublin **LATE NIGHT** > Belfast **LATE NIGHT** > Glasgow (Greenock) > Orkney Islands (Kirkwall) > Inverness/Loch Ness (Invergordon) > Edinburgh (South Queensferry) > Paris/Normandy (Le Havre) > London (Southampton)

Interior fares from*	Balcony fares from*	Mini-Suite fares from*	Club Class fares from*	Suite fares from*
\$2,969	\$4,116	\$4,791	\$5,534	\$8,234

Roundtrip London with Kirkwall or Liverpool^o

2019 DEPARTURES	<i>Crown Princess</i> [®]			
	May 13 MON	Jun 6* THU	Jul 24* WED	Sep 10* TUE
	May 25* SAT	Jun 30 SUN	Aug 5 MON	

Roundtrip London with Dublin Overnight^o

2019 DEPARTURES	<i>Crown Princess</i> [®]		
	May 1 WED	Jul 12 FRI	Aug 29 THU
	Jun 18 TUE	Aug 17 SAT	

Roundtrip Dublin^o new

2019 DEPARTURES	<i>Crown Princess</i> [®]			
	May 4 [†] SAT	Jun 9* SUN	Jul 15 [†] MON	Aug 20 [†] TUE
	May 16 THU	Jun 21 [†] FRI	Jul 27* SAT	Sep 1 SUN
	May 28* TUE	Jul 3 WED	Aug 8 THU	

Roundtrip Paris^o

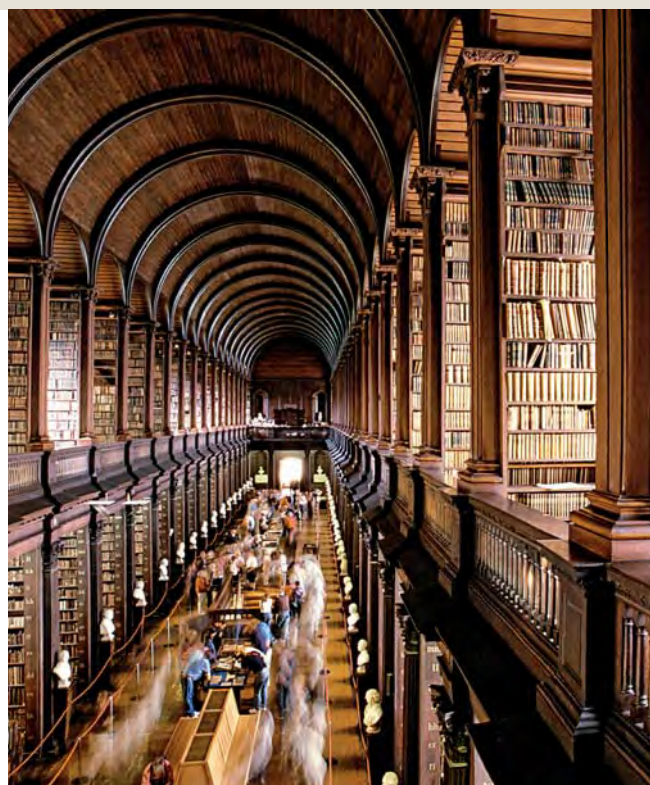
2019 DEPARTURES	<i>Crown Princess</i> [®]			
	May 12 SUN	Jun 17 [†] MON	Jul 23* TUE	Aug 28 [†] WED
	May 24* FRI	Jun 29 SAT	Aug 4 SUN	Sep 9* MON
	Jun 5* WED	Jul 11 [†] THU	Aug 16 [†] FRI	

*Fares based on 5/13/19 sailing. Fares for other dates may vary. Taxes, Fees and Port Expenses of up to \$270 are additional and subject to change. See page 31 for more details.

[†]Liverpool replaces Orkney Islands (Kirkwall), More Ashore Late Night calls and port order varies.

^oOvernight in Dublin replaces Orkney Islands (Kirkwall), More Ashore Late Night and port order varies.

[®]More Ashore Late Night calls and port order may vary, please see princess.com



Ireland's oldest university and one of the most prestigious in the world, Trinity College, which opened in 1592, retains its tranquil atmosphere on College Green despite being located in the center of Dublin. Its library is home to the ancient and lavishly decorated Book of Kells.

savor

Situated in the wine-producing village of Pauillac in the Médoc region, the famed Château Lafite Rothschild boasts centuries of artful winemaking. A producer of some of the world's finest red wines, the estate's reputation dates back to the 13th century. Visit its expansive vineyard — the largest in the Médoc — during a port call in Bordeaux.



Canary Islands

Roundtrip from London

11 days



more ashore

London (Southampton) > Vigo (for Santiago de Compostela) > Madeira (Funchal) > Santa Cruz de Tenerife **LATE NIGHT** > Gran Canaria (Las Palmas) **LATE NIGHT** > Lanzarote (Arrecife) > London (Southampton)

Interior fares from*	Balcony fares from*	Mini-Suite fares from*	Club Class fares from*	Suite fares from*
\$2,564	\$3,981	\$4,521	\$5,196	\$7,154

2019 DEPARTURES | *Sapphire Princess*®
Apr 16 TUE Oct 8 TUE

*Fares based on 4/16/19 sailing. Fares for other dates may vary. Taxes, Fees and Port Expenses of up to \$142 are additional and subject to change. See page 31 for more details.

Spain & France

Roundtrip from London

7 days



London (Southampton) > La Coruña (for Santiago de Compostela) > Bilbao > Bordeaux (Le Verdon) > Guernsey (St. Peter Port) > London (Southampton)

Interior fares from*	Balcony fares from*	Mini-Suite fares from*	Club Class fares from*	Suite fares from*
\$1,889	\$2,631	\$3,104	\$3,576	\$4,994

2019 DEPARTURE | *Sapphire Princess*®
May 25 SAT

*Taxes, Fees and Port Expenses of up to \$142 are additional and subject to change. See page 31 for more details.

more ashore

See the sights during the day and experience the nightlife after dark with Late Night (9 p.m. or later) or Overnight calls.

delight

Discover the famous Royal Edinburgh Military Tattoo at Edinburgh Castle, Scotland's biggest spectacle. As night begins to fall, a military precision drills with massed bands, bagpipes and drums, all representing various international regiments. This rich pageant is ever-changing and continuous, with traditional Scottish dancing and re-enactments of historical events.



Ireland, Scotland & Wales with Optional Edinburgh Military Tattoo*

Roundtrip from London

8 days



more ashore

London (Dover) > Jersey (St. Helier) > Milford Haven > Dublin **LATE NIGHT** > Inverness/Loch Ness (Invergordon) > Edinburgh (Rosyth) **LATE NIGHT** > London (Dover)

Interior fares from*	Balcony fares from*	Mini-Suite fares from*	Club Class fares from*	Suite fares from*
\$2,969	\$3,846	\$4,521	\$5,129	\$5,804

2019 DEPARTURE *Pacific Princess®* Aug 17 SAT

*Taxes, Fees and Port Expenses of up to \$263 are additional and subject to change. See page 31 for more details.

*Tickets for the Military Tattoo are on a first-come, first-served basis and must be booked at least 30 days prior to the cruise. Additional tickets cannot be obtained once the tour is fully subscribed as performances are sold out months in advance.

Ireland, Scottish Highlands & Wales

Roundtrip from London

14 days



more ashore

London (Dover) > Jersey (St. Helier) > Portland (for Stonehenge) > Cornwall (Falmouth) > Waterford > Holyhead > Dublin **LATE NIGHT** > Belfast **LATE NIGHT** > Portree (Isle of Skye) > Orkney Islands (Kirkwall) > Edinburgh (Rosyth) **LATE NIGHT** > Newcastle > London (Dover)

Interior fares from*	Balcony fares from*	Mini-Suite fares from*	Club Class fares from*	Suite fares from*
\$5,372	\$6,681	\$7,964	\$9,044	\$10,259

2019 DEPARTURE *Pacific Princess®* Sep 9 MON

*Taxes, Fees and Port Expenses of up to \$506 are additional and subject to change. See page 31 for more details.

more ashore

See the sights during the day and experience the nightlife after dark with Late Night (9 p.m. or later) or Overnight calls.

Greenland & Iceland with Optional Edinburgh Military Tattoo*

Roundtrip from London

new

18 days



more ashore

London (Dover) > Cornwall (Falmouth) > Cork (Cobh - for Blarney Castle) > Prins Christian Sound scenic cruising > Nanortalik > Qaqortoq > Reykjavik > Isafjörður > Akureyri > Edinburgh (Rosyth) **LATE NIGHT** > London (Dover)

Interior fares from*	Balcony fares from*	Mini-Suite fares from*	Club Class fares from*	Suite fares from*
\$6,344	\$8,166	\$9,854	\$11,136	\$12,824

2019 DEPARTURE *Pacific Princess®* Jul 30 TUE

*Taxes Fees and Port Expenses of up to \$547 are additional and subject to change. See page 31 for more details.

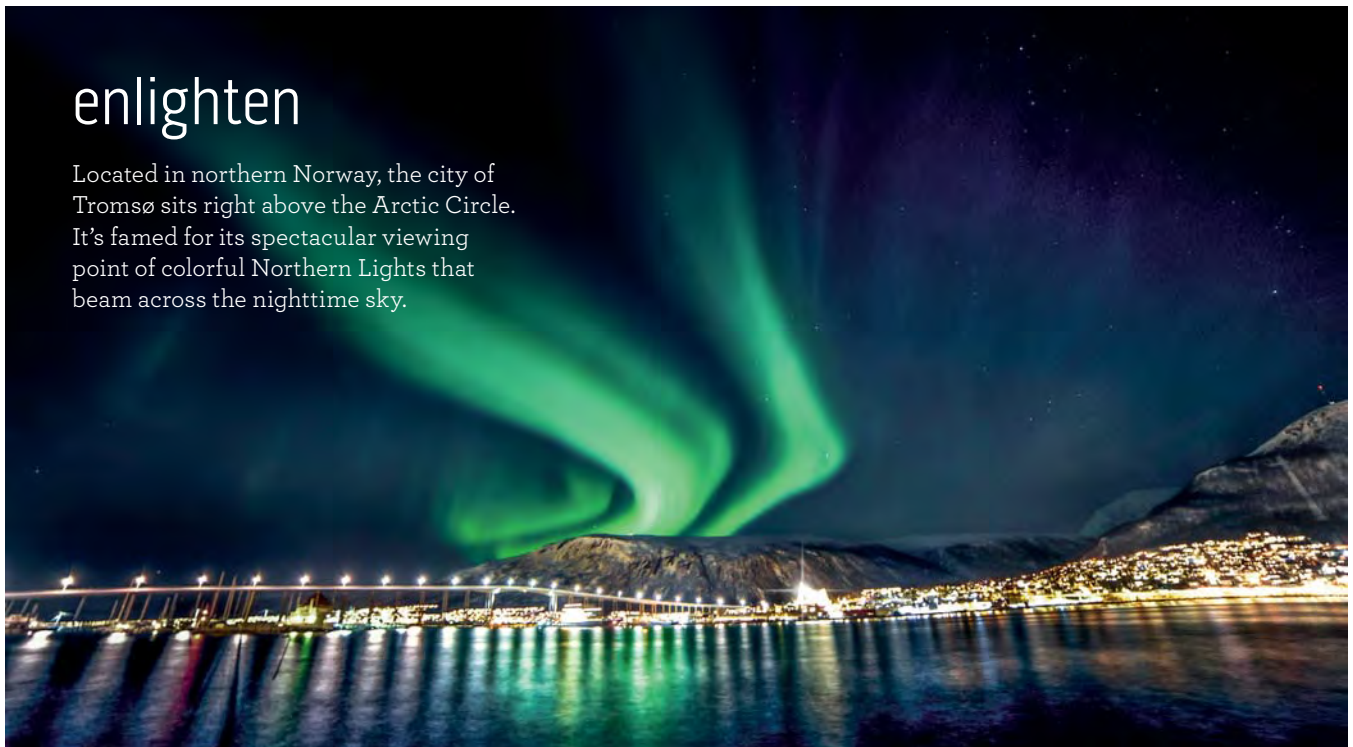
*Tickets for the Military Tattoo are on a first-come, first-served basis and must be booked at least 30 days prior to the cruise. Additional tickets cannot be obtained once the tour is fully subscribed as performances are sold out months in advance.

cruise plus®
hotel packages

Extend your Europe cruise vacation with a hotel stay in captivating port cities at the beginning or the end of your cruise vacation. [See princess.com/for details](http://princess.com/for details).

enlighten

Located in northern Norway, the city of Tromsø sits right above the Arctic Circle. It's famed for its spectacular viewing point of colorful Northern Lights that beam across the nighttime sky.



Search for the Northern Lights

Roundtrip from London

12 days



more ashore

London (Southampton) > Ålesund > Tromsø **LATE NIGHT** > Alta **OVERNIGHT** > Stavanger > London (Southampton)

Interior fares from*	Balcony fares from*	Mini-Suite fares from*	Club Class fares from*	Suite fares from*
\$3,104	\$4,926	\$5,804	\$6,614	\$9,179

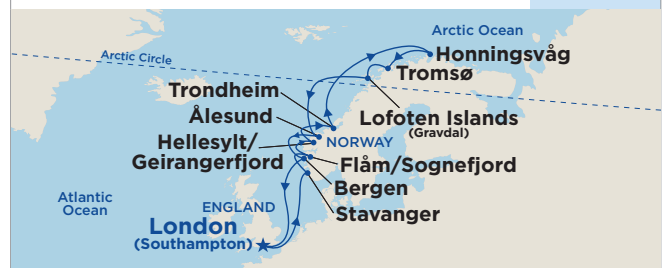
2019 DEPARTURE | *Sapphire Princess®*
Oct 19 SAT

*Taxes, Fees and Port Expenses of up to \$115 are additional and subject to change. See page 31 for more details.

Land of the Midnight Sun

Roundtrip from London

14/16 days



London (Southampton) > Stavanger > Flåm/Sognefjord > Hellesylt (drop-off for Geirangerfjord Fjord shore excursion) > Geirangerfjord > Trondheim > Honningsvåg (for North Cape) > Tromsø > Lofoten Islands (Gravdal) > Ålesund > Bergen > London (Southampton)

Interior fares from*	Balcony fares from*	Mini-Suite fares from*	Club Class fares from*	Suite fares from*
\$3,644	\$5,669	\$7,086	\$8,031	\$10,664

2019 DEPARTURES | *Sapphire Princess®* Jun 15 SAT | *Pacific Princess®* Jun 30* SUN

*Fares based on 6/15/19 Sapphire Princess® sailing. Fares for other dates may vary. Taxes, Fees and Port Expenses of up to \$196 are additional and subject to change. See page 31 for more details.

*Sailing is 16 days roundtrip London (Dover), Longyearbyen, Skjolden/Sognefjord and Haugesund replace Stavanger, Flåm/Sognefjord and Lofoten Islands (Gravdal), port order varies.



June 21 — the summer solstice and the longest day of the year — is the official start of summer. In Norway, the change in season is marked by a massive celebration called Slinningsbålet, where a huge bonfire tower is burned to reflect the sinking flame of the sun and to honor the birth of John the Baptist. Around the summer solstice, the midnight sun begins. This natural phenomenon means that the sun is visible a full 24 hours for many of the summer months.



Greenland & Canada
Roundtrip from New York City

new
16 days

New York > **Halifax** > **Sydney (Cape Breton Island)** > **Nuuk** > **Qaqortoq** > **Nanortalik** > **St. John's (Newfoundland)** > **New York**

Interior fares from [^]	Balcony fares from [^]	Mini-Suite fares from [^]	Club Class fares from [^]	Suite fares from [^]
\$3,374	\$5,804	\$7,154	\$8,774	\$11,204

2019 DEPARTURE
Caribbean Princess[®]
Aug 19 MON

[^]Taxes, Fees and Port Expenses of up to \$297 are additional and subject to change. See page 31 for more details.

Fire & Ice Explorer
Ft. Lauderdale to London

18 days

Ft. Lauderdale > **New York** > **Halifax** > **Reykjavik** > **Isafjörður** > **Akureyri** > **Faroe Islands (Tórshavn)** > **Shetland Islands (Lerwick)** > **London (Dover)**

Interior fares from [^]	Balcony fares from [^]	Mini-Suite fares from [^]	Club Class fares from [^]	Suite fares from [^]
\$6,816	\$8,099	\$9,651	\$10,934	\$13,499

2019 DEPARTURE
Pacific Princess[®]
Jun 12 WED

[^]Taxes, Fees and Port Expenses of up to \$486 are additional and subject to change. See page 31 for more details.

Combine this voyage with the 16-day Land of the Midnight Sun on page 11 for a 34-day Fire, Ice & Arctic Circle Grand Adventure.

explore

Wander through original colonial buildings during an outdoor expedition through Nanortalik Open Air Museum in Greenland. Discover local artifacts and relics from the Inuit culture and Norse ruins; then visit the outdoor camp and Eskimo huts.

more ashore

See the sights during the day and experience the nightlife after dark with Late Night (9 p.m. or later) or Overnight calls.

Iceland & Norway

Roundtrip from London

15 days



more ashore

London (Dover) > Stavanger > Seyðisfjörður > Akureyri > Grundarfjörður > Reykjavík **LATE NIGHT** > Ålesund > Flåm/Sognefjord > Bergen > Eidfjord > London (Dover)

Interior fares from*	Balcony fares from*	Mini-Suite fares from*	Club Class fares from*	Suite fares from*
\$6,006	\$7,424	\$8,706	\$9,854	\$11,339

2019 DEPARTURE | *Pacific Princess®* | Aug 25 SUN

*Taxes, Fees and Port Expenses of up to \$398 are additional and subject to change. See page 31 for more details.

relax

One of the most visited attractions in Iceland, the Blue Lagoon spa is located in a lava field in Grindavík on the Reykjanes Peninsula. The man-made lagoon is rich in minerals like silica and sulfur.



Iceland & Norway

Roundtrip from London

14 days



London (Southampton) > Bergen > Flåm/Sognefjord > Hellesylt (drop-off for Geirangerfjord shore excursion) > Geirangerfjord > Ålesund > Akureyri > Ísafjörður > Grundarfjörður > Reykjavík > London (Southampton)

Interior fares from*	Balcony fares from*	Mini-Suite fares from*	Club Class fares from*	Suite fares from*
\$3,644	\$5,601	\$7,019	\$7,964	\$10,664

2019 DEPARTURE | *Sapphire Princess®* | Jul 13 SAT

*Taxes, Fees and Port Expenses of up to \$223 are additional and subject to change. See page 31 for more details.

Norwegian Fjords

Roundtrip from London

7 days



London (Southampton) > Bergen > Hellesylt (drop-off for Geirangerfjord shore excursion) > Geirangerfjord > Olden/Nordfjord > Stavanger > London (Southampton)

Interior fares from*	Balcony fares from*	Mini-Suite fares from*	Club Class fares from*	Suite fares from*
\$1,889	\$2,699	\$3,104	\$3,576	\$5,129

2019 DEPARTURES | *Sapphire Princess®* | May 18 SAT | Jul 6* SAT | Aug 10* SAT

*Fares based on 5/18/19 sailing. Fares for other dates may vary. Taxes, Fees and Port Expenses of up to \$135 are additional and subject to change. See page 31 for more details.

*Port order varies

more to explore

new

24 days

DAYS	ITINERARY	PORTS	SHIP	2019 DATE
24	Canada & New England	London (Southampton) > St. John's (Newfoundland) > Sydney (Cape Breton Island) > Charlottetown (Prince Edward Island) > New York OVERNIGHT > Newport > Boston LATE NIGHT > Rockland > Saint John (for the Bay of Fundy) > Halifax > London (Southampton)	<i>Sapphire Princess®</i>	Sep 14 SAT



mediterranean

explore the ports

Toulon

Toulon is home to a large French naval base, housing submarines, warships and the famous Charles de Gaulle aircraft carrier. You can also see the 17th-century Vauban, still used by the French military today.



Barcelona

Medieval palaces, Gaudí's mosaic dragon and the Picasso Museum are just a few of the stunning sites in Barcelona. Experience artisan shops and trendy clubs at the Gothic Quarter.

ways to sail

The excitement starts here — at our departure ports — where you'll begin your unforgettable Mediterranean cruise vacation:

Athens (Piraeus)
Rome (Civitavecchia)
Barcelona
London (Southampton)
London (Dover)
Venice
Ft. Lauderdale

ENGLAND

London
(Southampton
or Dover)

Atlantic
Ocean

FRANCE

Bordeaux
(Le Verdon)

La Coruña

Bilbao

Toulon/Provence

Sète

Barcelona

MONACO

Marseille

Genoa

Ravenna

Venice

Florence

Monte Carlo

Ajaccio

Rome

PORTUGAL

SPAIN

Valencia

Cartagena

Mediterranean
Sea

Lisbon

Portimão

Málaga

Cádiz

Gibraltar

Ceuta

Casablanca

Kotor

This ancient coastal town is located along Montenegro's most beautiful bay, Boka Kotorska. Home to medieval ruins, ancient palaces and churches, Kotor is known for summertime street festivals and carnivals.



Rome

The Eternal City of Rome provides an endless feast of splendors. St. Peter's Square, the Sistine Chapel and the Baroque Trevi Fountain are among the countless riches you should not miss.

Dip your toes in the deep blue sea after a day exploring Barcelona. Sip a glass of Moscato in Rome in the shadow of the Colosseum. Enjoy the dreamy romance of riding through Marseille's streets on a bike. Sandy beaches, ancient cities and modern splendor combine to make the Mediterranean a singular, unforgettable experience.



Naples

Naples is famed for its stately buildings, bustling streets and the archaeological site of Pompeii. Once a thriving Roman city, Pompeii was destroyed after a catastrophic eruption of Mount Vesuvius.



Split

This Croatian city has been a popular destination on the Adriatic since the days of Roman emperors, boasting pine-clad hills, secluded coves and beaches. Perhaps most impressive is Diocletian's Palace, a massive fortress-like structure built for Emperor Diocletian in the 4th century.

Athens

Athens is home to renowned sites including the Parthenon, the Acropolis and the Temple of Olympian Zeus. After exploring Greek artifacts, indulge in the modern tavernas and shops.



Mykonos

This quintessential island getaway boasts fine golden sand beaches and crystalline azure waters, while the iconic windmills and streets glitter under the brilliant Greek sun.



Crete

With rolling hills, rugged mountains and exquisite beaches, Crete is a magical landscape. Natural beauty is complemented by historical treasures, such as the Palace of Knossos and Byzantine churches.

the mediterranean's majestic masterpieces



A massive citadel, in ruins from ancient times, overlooking the city of Athens. Artistic and architectural masterpieces within Catholicism's most sacred site. An Old City aglow with Gothic, Renaissance and Baroque churches and palaces. The Mediterranean's treasured UNESCO World Heritage Sites await you during a memorable journey with Princess.®

Vatican City

ROME, ITALY

Home to the Pope and some of the world's most remarkable architecture, Vatican City is the world's smallest fully independent nation-state. Located within the city boundaries lies the Vatican Museums, which house an immense collection of art amassed by Popes throughout the centuries. The Sistine Chapel is also not to be missed, featuring the fresco of "The Last Judgment" by Michelangelo.



Park Güell

BARCELONA, SPAIN

Stunning landscapes, perfectly manicured gardens and unique architectural structures make Park Güell such a fascinating UNESCO World Heritage Site. Located on Carmel Hill in Barcelona, this park was designed by Antoni Gaudí, a renowned architect and the face of Catalan modernism. The architectural structure reflects his personal style through organic shapes, geometry and religious inspiration.

Old City of Dubrovnik

DUBROVNIK, CROATIA

A Croatian city on the Adriatic Sea, the Old City of Dubrovnik is notable for its wealth, diplomacy and massive walls. The walls are between 13 and 20 feet thick and were built with the intention of protecting the vulnerable city. The walls are a popular filming location for TV shows, including *Game of Thrones*, and a must-see tourist attraction.



Acropolis

ATHENS, GREECE

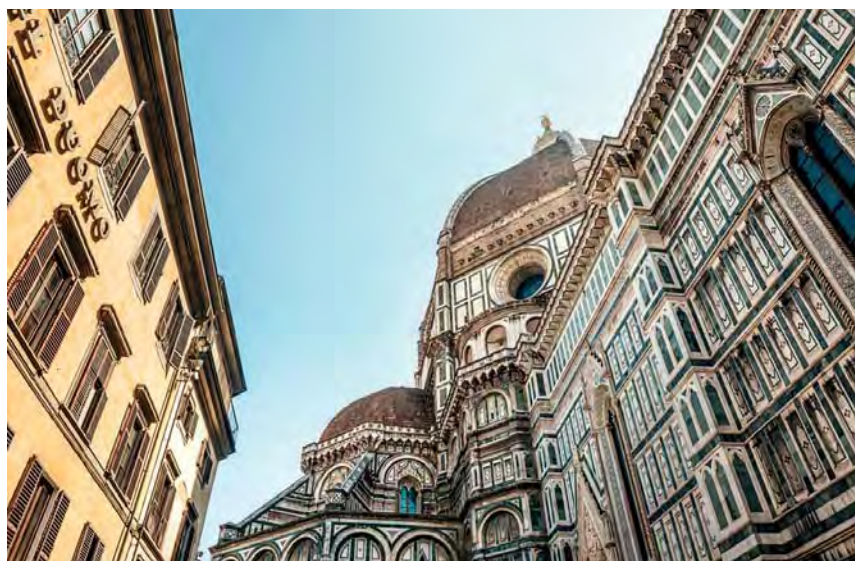
Meaning “upper city” in Greek, Acropolis is an ancient citadel located on an extremely rocky outcrop above the city of Athens. Home to the remains of several ancient buildings showcasing great architectural and historical significance, the most famous being the Parthenon, the site of Acropolis was chosen for defense purposes.



Historic Center of Florence

FLORENCE, ITALY

The capital of Italy's Tuscany region, Florence's historic center is an archive of Renaissance culture. One of its notable sites is the Duomo, perhaps the city's most iconic landmark. Capped by Filippo Brunelleschi's red-tiled cupola, the cathedral's staggering construction took almost 150 years to complete. Marvel at its colorful tiles, bell tower, frescoes and more than 40 stained glass windows.



introducing Sky PrincessSM

Debating in the Mediterranean in 2019 is our newest ship, Sky Princess.SM Carrying 3,560 passengers, she'll include the best of the incredible features found on sister ships Regal Princess®, Royal Princess® and Majestic Princess® from the relaxing Sanctuary to the expansive three-deck Atrium to some of our newest dining venues with updated décor and design throughout the ship. And of course, there are some exciting new features planned, so be sure to check princess.com for the latest news on Sky Princess!

Inaugural Western Mediterranean & Adriatic Medley

Athens to Rome

new
ship

14 days



more ashore

Athens (Piraeus) > Kotor > Corfu > Sicily (Messina - for Mt. Etna & Taormina) > Naples (for Capri & Pompeii) > Barcelona **LATE NIGHT** > Gibraltar > Toulon/Provence (La Seyne) > Genoa (for Milan) **LATE NIGHT** > Florence/Pisa (Livorno) > Rome (Civitavecchia)

Interior fares from*	Balcony fares from*	Mini-Suite fares from*	Club Class fares from*	Suite fares from*
\$3,711	\$4,926	\$5,736	\$6,614	\$9,516

2019
DEPARTURE | Sky PrincessSM
Oct 20 SUN

*Taxes, Fees and Port Expenses of up to \$230 are additional and subject to change. See page 31 for more details.

Inaugural Mediterranean & Adriatic

Athens to Barcelona

new
ship

7 days



Athens (Piraeus) > Kotor > Corfu > Sicily (Messina - for Mt. Etna & Taormina) > Naples (for Capri & Pompeii) > Barcelona

Interior fares from*	Balcony fares from*	Mini-Suite fares from*	Club Class fares from*	Suite fares from*
\$1,956	\$2,564	\$2,969	\$3,428	\$4,859

2019
DEPARTURE | Sky PrincessSM
Oct 20 SUN

*Taxes, Fees and Port Expenses of up to \$149 are additional and subject to change. See page 31 for more details.

more ashore

See the sights during the day and experience the nightlife after dark with Late Night (9 p.m. or later) or Overnight calls.

Western Mediterranean Medley

Between Barcelona and Rome

new
ship

14 days



more ashore

Barcelona **LATE NIGHT** > Gibraltar > Toulon/Provence (La Seyne) > Genoa (for Milan) **LATE NIGHT** > Florence/Pisa (Livorno) > Rome (Civitavecchia) > Kotor > Corfu > Valletta (Malta) > Sicily (Messina - for Mt. Etna & Taormina) > Naples (for Capri & Pompeii) > Rome (Civitavecchia)

Interior fares from*	Balcony fares from*	Mini-Suite fares from*	Club Class fares from*	Suite fares from*
\$3,711	\$4,926	\$5,736	\$6,614	\$9,516

2019
DEPARTURES | Sky PrincessSM
Oct 27 SUN Nov 3* SUN

*Fares based on 10/27/19 sailing. Fares for other dates may vary. Taxes, Fees and Port Expenses of up to \$216 are additional and subject to change. See page 31 for details.

*Port order varies, More Ashore Late Night in Valletta (Malta) replaces More Ashore Late Night in Barcelona and Genoa.

new
ship



Mediterranean

Between Barcelona and Rome

new
ship

7 days



more ashore

Barcelona **LATE NIGHT** > Gibraltar > Toulon/Provence (La Seyne) > Genoa (for Milan)
LATE NIGHT > Florence/Pisa (Livorno) > Rome (Civitavecchia)

Interior fares from*	Balcony fares from*	Mini-Suite fares from*	Club Class fares from*	Suite fares from*
\$1,956	\$2,564	\$2,969	\$3,428	\$4,859

2019 DEPARTURES | Sky PrincessSM
Oct 27 SUN Nov 10* SUN

*Fares based on 10/27/19 sailing. Fares for other dates may vary. Taxes, Fees and Port Expenses of up to \$142 are additional and subject to change. See page 31 for details.

*Itinerary operates in reverse, excludes More Ashore Late Night in Barcelona and Genoa.

Mediterranean

Roundtrip Rome

new
ship

7 days



more ashore

Rome (Civitavecchia) > Kotor > Corfu > Valletta (Malta) **LATE NIGHT** >
Sicily (Messina - for Mt. Etna & Taormina) > Naples (for Capri & Pompeii) >
Rome (Civitavecchia)

Interior fares from*	Balcony fares from*	Mini-Suite fares from*	Club Class fares from*	Suite fares from*
\$1,956	\$2,564	\$2,969	\$3,428	\$4,859

2019 DEPARTURE | Sky PrincessSM
Nov 3 SUN

*Taxes, Fees and Port Expenses of up to \$101 are additional and subject to change. See page 31 for more details.

more to explore

new
ship

14, 21 or 28 days

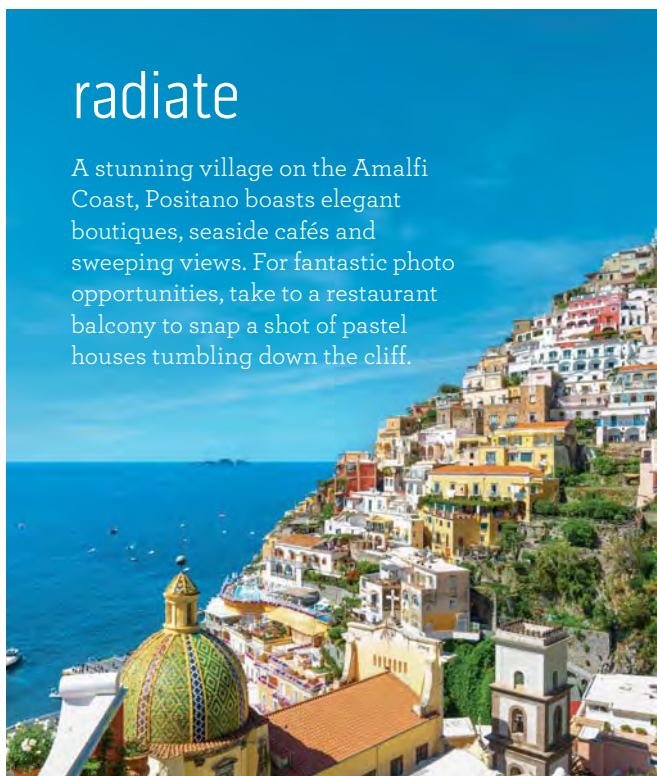
DAYS	ITINERARY	PORTS	SHIP	2019 DATES	Fares from*
14	Spanish Passage	Barcelona > Valencia > Málaga > Seville (Cádiz) > Lisbon > Madeira (Funchal) > Ft. Lauderdale	Sky Princess SM	Nov 17 SUN	\$1,551
21	Mediterranean Grand Adventure®	Rome (Civitavecchia) > Florence/Pisa (Livorno) > Genoa (for Milan) > Toulon/Provence (La Seyne) > Gibraltar > Barcelona > Valencia > Málaga > Seville (Cádiz) > Lisbon > Madeira (Funchal) > Ft. Lauderdale	Sky Princess SM	Nov 10 SUN	\$3,104
28	Western Mediterranean Grand Adventure®	Rome (Civitavecchia) > Kotor > Corfu > Valletta (Malta) > Sicily (Messina - for Mt. Etna & Taormina) > Naples (for Capri & Pompeii) > Rome (Civitavecchia) > Florence/Pisa (Livorno) > Genoa (for Milan) > Toulon/Provence (La Seyne) > Gibraltar > Barcelona > Valencia > Málaga > Seville (Cádiz) > Lisbon > Madeira (Funchal) > Ft. Lauderdale	Sky Princess SM	Nov 3 SUN	\$4,859

*Fares shown apply to minimum interior lead-in categories on a space-available basis at time of booking. Refer to princess.com for information and fares for other categories. Taxes, Fees and Port Expenses of up to \$250 are additional and subject to change. See page 31 for more details.



radiate

A stunning village on the Amalfi Coast, Positano boasts elegant boutiques, seaside cafés and sweeping views. For fantastic photo opportunities, take to a restaurant balcony to snap a shot of pastel houses tumbling down the cliff.



Mediterranean & Aegean

Rome to Athens

7 days



more ashore

Rome (Civitavecchia) > Salerno (for Amalfi Coast, Capri & Pompeii) > Kotor > Corfu > Crete (Chania) **LATE NIGHT** > Mykonos **LATE NIGHT** > Athens (Piraeus)

Interior fares from*	Balcony fares from*	Mini-Suite fares from*	Club Class fares from*	Suite fares from*
\$1,754	\$2,496	\$2,901	\$3,374	\$4,589

2019 DEPARTURES	Emerald Princess®		
May 25 SAT	Jul 6 SAT	Aug 17 SAT	
Jun 15 SAT	Jul 27 SAT	Sep 7 SAT	

*Fares based on 5/25/19 sailing. Fares for other dates may vary. Taxes, Fees and Port Expenses of up to \$95 are additional and subject to change. See page 31 for more details.

Mediterranean & Adriatic

Athens to Barcelona

7 days



Athens (Piraeus) > Santorini > Kotor > Sicily (Messina - for Mt. Etna & Taormina) > Naples (For Capri & Pompeii) > Barcelona

Interior fares from*	Balcony fares from*	Mini-Suite fares from*	Club Class fares from*	Suite fares from*
\$1,821	\$2,564	\$2,969	\$3,441	\$4,724

2019 DEPARTURES	Emerald Princess®		
Jun 1 SAT	Jul 13 SAT	Aug 24 SAT	
Jun 22 SAT	Aug 3 SAT	Sep 14 SAT	

*Fares based on 6/1/19 sailing. Fares for other dates may vary. Taxes, Fees and Port Expenses of up to \$135 are additional and subject to change. See page 31 for more details.

more ashore

See the sights during the day and experience the nightlife after dark with Late Night (9 p.m. or later) or Overnight calls.

Adriatic & Aegean Medley

Rome to Barcelona

14 days



more ashore

Rome (Civitavecchia) > Salerno (for Amalfi Coast, Capri & Pompeii) > Kotor > Corfu > Crete (Chania) **LATE NIGHT** > Mykonos **LATE NIGHT** > Athens (Piraeus) > Santorini > Kotor > Sicily (Messina - for Mt. Etna & Taormina) > Naples (for Capri & Pompeii) > Barcelona

Interior fares from*	Balcony fares from*	Mini-Suite fares from*	Club Class fares from*	Suite fares from*
\$3,374	\$4,859	\$5,669	\$6,546	\$10,259

2019 DEPARTURES	Emerald Princess®		
May 25 SAT	Jul 6 SAT	Aug 17 SAT	
Jun 15 SAT	Jul 27 SAT	Sep 7 SAT	

*Fares based on 5/25/19 sailing. Fares for other dates may vary. Taxes, Fees and Port Expenses of up to \$196 are additional and subject to change. See page 31 for more details.

Western Mediterranean & Adriatic Medley

Athens to Rome

14 days



more ashore

Athens (Piraeus) > Santorini > Kotor > Sicily (Messina - for Mt. Etna & Taormina) > Naples (for Capri & Pompeii) > Barcelona **LATE NIGHT** > Gibraltar > Marseille (for Provence) > Genoa (for Milan) **LATE NIGHT** > Florence/Pisa (Livorno) > Rome (Civitavecchia)

Interior fares from*	Balcony fares from*	Mini-Suite fares from*	Club Class fares from*	Suite fares from*
\$3,441	\$4,926	\$5,736	\$6,614	\$9,246

2019 DEPARTURES	Emerald Princess®			
	Jun 1 SAT	Jul 13 SAT	Aug 24 SAT	
	Jun 22 SAT	Aug 3 SAT		

*Fares based on 6/1/19 sailing. Fares for other dates may vary. Taxes, Fees and Port Expenses of up to \$223 are additional and subject to change. See page 31 for more details.

Western Mediterranean & Aegean Medley

Barcelona to Athens

14 days



more ashore

Barcelona **LATE NIGHT** > Gibraltar > Marseille (for Provence) > Genoa (for Milan) **LATE NIGHT** > Florence/Pisa (Livorno) > Rome (Civitavecchia) > Salerno (for Amalfi Coast, Capri & Pompeii) > Kotor > Corfu > Crete (Chania) **LATE NIGHT** > Mykonos **LATE NIGHT** > Athens (Piraeus)

Interior fares from*	Balcony fares from*	Mini-Suite fares from*	Club Class fares from*	Suite fares from*
\$3,306	\$4,791	\$5,601	\$6,479	\$8,976

2019 DEPARTURES	Emerald Princess®			
	May 18 SAT	Jun 29 SAT	Aug 10 SAT	
	Jun 8 SAT	Jul 20 SAT	Aug 31 SAT	

*Fares based on 5/18/19 sailing. Fares for other dates may vary. Taxes, Fees and Port Expenses of up to \$202 are additional and subject to change. See page 31 for more details.



enamor

Known for its picturesque architecture, cobblestone lanes and pristine white-washed buildings, the charming Greek village of Santorini is not to be missed. Amble through its welcoming shops and domed churches, backdropped by sapphire waters and black-sand beaches.

discover

Known as the playground of the rich and famous, experience *la dolce vita* in picturesque Portofino. This Italian fishing village is clustered around its small harbor, making for an incredible vista by sea.



Mediterranean
Barcelona to Rome

7 days

Barcelona **LATE NIGHT**

Gibraltar

Marseille (for Provence)

Genoa (for Milan)

Florence/Pisa (Livorno)

Rome (Civitavecchia)

more ashore

Interior fares from*	Balcony fares from*	Mini-Suite fares from*	Club Class fares from*	Suite fares from*
\$1,754	\$2,496	\$2,901	\$3,374	\$4,589

2019 DEPARTURES

Emerald Princess®

May 18 SAT

Jun 8 SAT

Jun 29 SAT

Jul 20 SAT

Aug 10 SAT

Aug 31 SAT

*Fares based on 5/18/19 sailing. Fares for other dates may vary. Taxes, Fees and Port Expenses of up to \$142 are additional and subject to change. See page 31 for more details.



We've partnered with a trusted team of local experts throughout Europe to bring you the very best of each region! Our longstanding relationships with port partners means that we can offer more meaningful destination experiences inspired by the passion, pride and creativity of those who know the destination best. Enjoy onboard speakers, destination videos and new shore excursions that allow you to see each place through the eyes of a local. *For more details, visit princess.com/localconnections.*

more ashore See the sights during the day and experience the nightlife after dark with Late Night (9 p.m. or later) or Overnight calls.

Grand Mediterranean

Rome to Barcelona

11 days



more ashore

Rome (Civitavecchia) > Kotor > Dubrovnik **LATE NIGHT** > Athens (Piraeus) **LATE NIGHT** > Santorini > Katakolon (for Olympia) > Corsica (Ajaccio) > Sète (for Carcassonne) > Barcelona

Interior fares from*	Balcony fares from*	Mini-Suite fares from*	Club Class fares from*	Suite fares from*
\$2,969	\$4,116	\$4,724	\$5,399	\$7,829

2019 DEPARTURES | *Emerald Princess®*
Oct 2 WED Oct 24 THU

*Fares based on 10/24/19 sailing. Fares for other dates may vary. Taxes, Fees and Port Expenses of up to \$155 are additional and subject to change. See page 31 for more details..

Grand Western Mediterranean

Barcelona to Rome

11 days



more ashore

Barcelona > Toulon/ Provence (La Seyne) > Florence/Pisa (Livorno) > Valletta (Malta) **LATE NIGHT** > Kotor > Corfu **LATE NIGHT** > Sicily (Palermo) > Naples (for Capri & Pompeii) > Rome (Civitavecchia)

Interior fares from*	Balcony fares from*	Mini-Suite fares from*	Club Class fares from*	Suite fares from*
\$2,696	\$4,184	\$4,724	\$5,399	\$7,964

2019 DEPARTURES | *Emerald Princess®*
Sep 21* SAT Oct 13 SUN

*Fares based on 10/13/19 sailing. Fares for other dates may vary. Taxes, Fees and Port Expenses of up to \$162 are additional and subject to change. See page 31 for more details.

*Sicily (Messina - for Mt. Etna & Taormina) replaces Sicily (Palermo).

encounter

Set on the Rhône River, Provence's Avignon was the seat of the Catholic Popes from 1309 to 1378, during their exile from Rome. Although its reign as the papal power only last a short time, it is home to an impressive legacy of architecture, including the Pont d'Avignon bridge.



Grand Mediterranean Collection

Roundtrip from Barcelona or Rome

22 days



more ashore

Barcelona > Toulon/ Provence (La Seyne) > Florence/Pisa (Livorno) > Valletta (Malta) **LATE NIGHT** > Kotor > Corfu **LATE NIGHT** > Sicily (Palermo) > Naples (for Capri & Pompeii) > Rome (Civitavecchia) > Kotor > Dubrovnik **LATE NIGHT** > Athens (Piraeus) **LATE NIGHT** > Santorini > Katakolon (for Olympia) > Corsica (Ajaccio) > Sète (for Carcassonne) > Barcelona

Interior fares from*	Balcony fares from*	Mini-Suite fares from*	Club Class fares from*	Suite fares from*
\$5,601	\$7,964	\$9,111	\$10,461	\$15,456

2019 DEPARTURES | *Emerald Princess®*
 Sep 21* SAT Oct 2† WED Oct 13 SUN

*Fares based on 10/13/19 sailing. Fares for other dates may vary. Taxes, Fees and Port Expenses of up to \$284 are additional and subject to change. See page 31 for more details.

*Sicily (Messina - for Mt. Etna & Taormina) replaces Sicily (Palermo).

†Roundtrip from Rome (Civitavecchia), port order and content varies.

more ashore

See the sights during the day and experience the nightlife after dark with Late Night (9 p.m. or later) or Overnight calls.

Mediterranean Collection

Roundtrip from Barcelona, Athens or Rome

21 days



more ashore

Barcelona **LATE NIGHT** > Gibraltar > Marseille (for Provence) > Genoa (for Milan) **LATE NIGHT** > Florence/Pisa (Livorno) > Rome (Civitavecchia) > Salerno (for Amalfi Coast, Capri & Pompeii) > Kotor > Corfu > Crete (Chania) **LATE NIGHT** > Mykonos **LATE NIGHT** > Athens (Piraeus) > Santorini > Kotor > Sicily (Messina - for Mt. Etna & Taormina) > Naples (for Capri & Pompeii) > Barcelona

Interior fares from*	Balcony fares from*	Mini-Suite fares from*	Club Class fares from*	Suite fares from*
\$4,994	\$7,221	\$8,436	\$9,786	\$13,566

2019 DEPARTURES | *Emerald Princess®*
 May 18 SAT Jun 15† SAT Jul 13* SAT Aug 10 SAT
 May 25† SAT Jun 22* SAT Jul 20 SAT Aug 17† SAT
 Jun 1* SAT Jun 29 SAT Jul 27† SAT Aug 24* SAT
 Jun 8 SAT Jul 6† SAT Aug 3* SAT Aug 31 SAT

*Fares based on 5/18/19 sailing. Fares for other dates may vary. Taxes, Fees and Port Expenses of up to \$304 are additional and subject to change. See page 31 for more details.

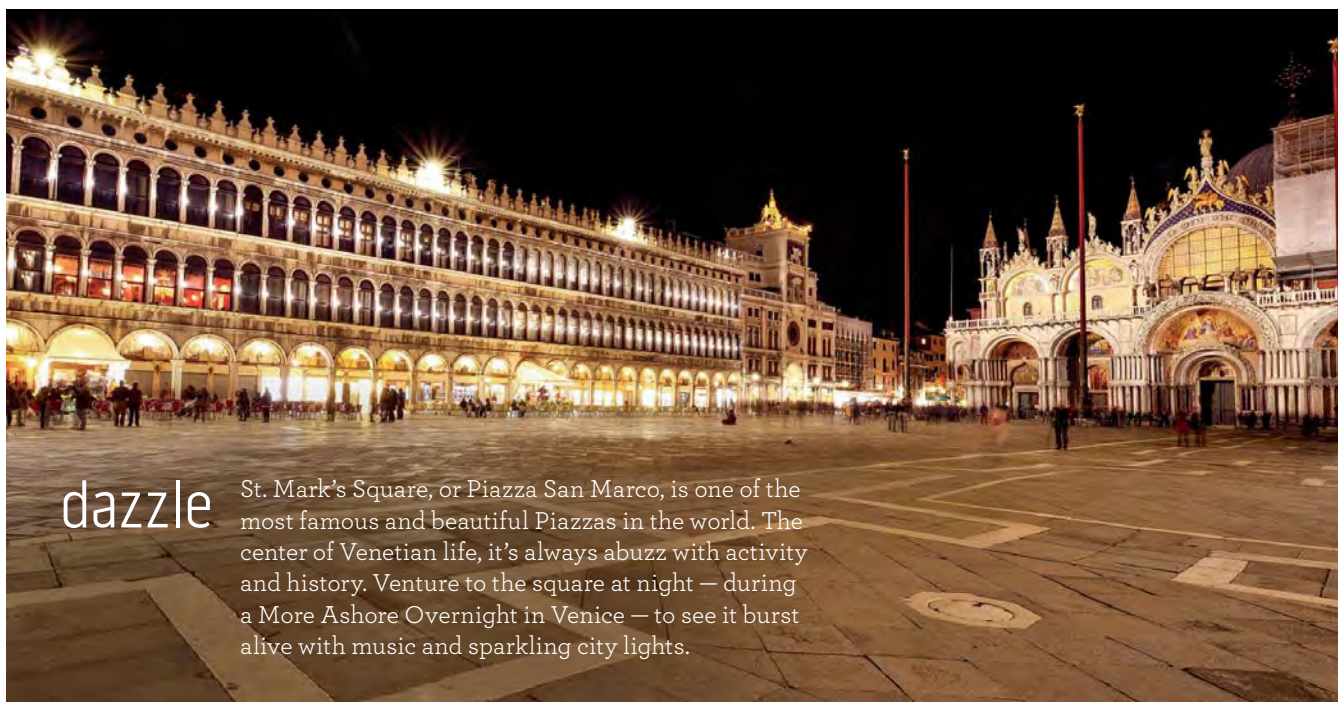
*Roundtrip from Athens, port order and content varies.

†Roundtrip from Rome (Civitavecchia), port order and content varies.

reflect

The largest and best-preserved fortress in Europe, the Historic Fortified City of Carcassonne features a magnificent citadel, pennant-capped towers and a Gothic cathedral. Dating back to the Middle Ages, this UNESCO World Heritage Site can be explored from the port of Sète.





dazzle

St. Mark's Square, or Piazza San Marco, is one of the most famous and beautiful Piazzas in the world. The center of Venetian life, it's always abuzz with activity and history. Venture to the square at night — during a More Ashore Overnight in Venice — to see it burst alive with music and sparkling city lights.

Greek Isles Connoisseur

Venice to Rome

12 days



more ashore

Venice **OVERNIGHT** > Sibenik > Kotor > Corfu > Rhodes > Santorini > Athens (Piraeus) > Catania > Salerno (for Amalfi Coast, Capri & Pompeii) > Rome (Civitavecchia)

Interior fares from*	Balcony fares from*	Mini-Suite fares from*	Club Class fares from*	Suite fares from*
\$3,239	\$4,589	\$5,804	\$6,614	\$7,964

2019 DEPARTURES | *Pacific Princess®*
Oct 30 WED Nov 23 SAT

*Fares based on 11/23/19 sailing. Fares for other dates may vary. Taxes, Fees and Port Expenses of up to \$297 are additional and subject to change. See page 31 for more details.

Western Mediterranean & Adriatic Connoisseur

Rome to Venice

12 days



more ashore

Rome (Civitavecchia) > Genoa (for Milan) **LATE NIGHT** > Salerno (for Amalfi Coast, Capri & Pompeii) **LATE NIGHT** > Sicily (Messina - for Mt. Etna & Taormina) > Valletta (Malta) **LATE NIGHT** > Kotor > Split > Ravenna (for San Marino & Bologna) > Ljubljana (Koper) > Venice **OVERNIGHT**

Interior fares from*	Balcony fares from*	Mini-Suite fares from*	Club Class fares from*	Suite fares from*
\$3,374	\$4,724	\$5,939	\$6,749	\$8,099

2019 DEPARTURES | *Pacific Princess®*
Oct 18 FRI Nov 11 MON

*Fares based on 11/11/19 sailing. Fares for other dates may vary. Taxes, Fees and Port Expenses of up to \$250 are additional and subject to change. See page 31 for more details.



Discover the breathtaking beauty of Mount Etna in Sicily with a delightful visit to the village of Zafferana Etnea with Princess®. Sitting 1,800 feet above sea level, it boasts enchanting, wild scenery and panoramic views of Italy's iconic natural wonder.





inspire

A highly ornate monastery situated in the Belém district of western Lisbon, the Jerónimos Monastery took nearly 100 years to construct. One of the most decorative, complexly designed churches in history, the structure was designated as a UNESCO World Heritage Site in 1983.

European Explorer

Between Rome and London

10 days

more ashore

Rome (Civitavecchia) > Florence/Pisa (Livorno) > Monte Carlo > Barcelona
LATE NIGHT > Gibraltar > Lisbon LATE NIGHT > Paris/Normandy (Le Havre) > London (Southampton)

Interior fares from*	Balcony fares from*	Mini-Suite fares from*	Club Class fares from*	Suite fares from*
\$2,024	\$3,306	\$3,914	\$4,521	\$6,074

2019 DEPARTURES
 Apr 6 SAT Oct 31* THU

Sapphire Princess®

*Fares based on 4/6/19 sailing. Fares for other dates may vary. Taxes, Fees and Port Expenses of up to \$149 are additional and subject to change. See page 31 for more details.
 *Itinerary operates in reverse, Toulon replaces Monte Carlo, More Ashore Late Night in Gibraltar replaces Late Night in Barcelona and Lisbon.

European Explorer

London to Rome

11 days

more ashore

London (Dover) > La Coruña (for Santiago de Compostela) > Algarve Coast (Portimão) > Gibraltar LATE NIGHT > Barcelona > Sète (for Carcassonne) > Corsica (Ajaccio) > Florence/Pisa (Livorno) > Rome (Civitavecchia)

Interior fares from*	Balcony fares from*	Mini-Suite fares from*	Club Class fares from*	Suite fares from*
\$3,644	\$4,926	\$6,074	\$6,884	\$8,234

2019 DEPARTURE
 Oct 7 MON

Pacific Princess®

*Taxes, Fees and Port Expenses of up to \$290 are additional and subject to change. See page 31 for more details.
 Combine this voyage with the 12-day Western Mediterranean & Adriatic Connoisseur shown on page 25 for a 23-day Grand European Explorer.

more ashore

See the sights during the day and experience the nightlife after dark with Late Night (9 p.m. or later) or Overnight calls.

Mediterranean Adventurer

Roundtrip from London

14 days



London (Southampton) > Seville (Cádiz) > Barcelona > Marseille (for Provence) > Florence/Pisa (Livorno) > Rome (Civitavecchia) > Sardinia (Alghero) > Ceuta (Spanish Morocco) > London (Southampton)

Interior fares from*	Balcony fares from*	Mini-Suite fares from*	Club Class fares from*	Suite fares from*
\$3,711	\$5,466	\$6,344	\$7,289	\$9,989

2019 DEPARTURE | *Sapphire Princess*®
Aug 17 SAT

*Taxes, Fees and Port Expenses of up to \$196 are additional and subject to change. See page 31 for more details.

Mediterranean Explorer

Roundtrip from London

14 days



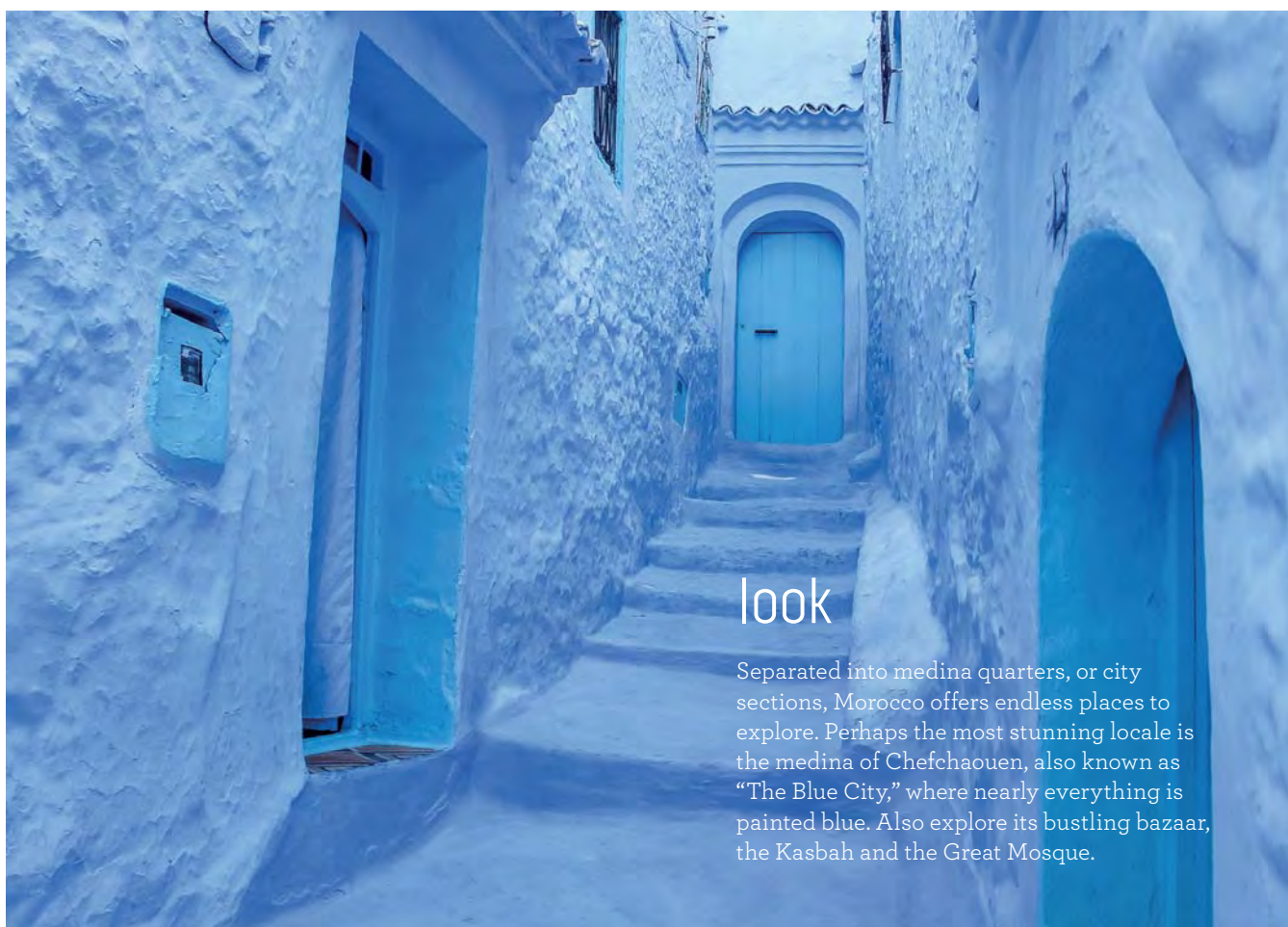
more ashore

London (Southampton) > Algarve Coast (Portimão) > Seville (Cádiz) > Málaga > Corsica (Ajaccio) > Sète (for Carcassonne) > Ceuta (Spanish Morocco) > Lisbon > LATE NIGHT > London (Southampton)

Interior fares from*	Balcony fares from*	Mini-Suite fares from*	Club Class fares from*	Suite fares from*
\$3,644	\$5,399	\$6,411	\$7,356	\$9,989

2019 DEPARTURE | *Sapphire Princess*®
Jul 27 SAT

*Taxes, Fees and Port Expenses of up to \$209 are additional and subject to change. See page 31 for more details.



look

Separated into medina quarters, or city sections, Morocco offers endless places to explore. Perhaps the most stunning locale is the medina of Chefchaouen, also known as “The Blue City,” where nearly everything is painted blue. Also explore its bustling bazaar, the Kasbah and the Great Mosque.

Indian Ocean & Europe Grand Adventure®

Between Singapore and London

37 days

more ashore

Singapore > Phuket > Colombo **LATE NIGHT** > Cochin > Dubai **LATE NIGHT** > Salalah > Aqaba (for Petra) > Suez Canal transit > Athens (Piraeus) **LATE NIGHT** > Valletta (Malta) **LATE NIGHT** > Sicily (Messina - for Mt. Etna & Taormina) > Naples (for Capri & Pompeii) > Rome (Civitavecchia) > Florence/Pisa (Livorno) > Monte Carlo > Barcelona **LATE NIGHT** > Gibraltar > Lisbon **LATE NIGHT** > Paris/Normandy (Le Havre) > London (Southampton)

Interior fares from*	Balcony fares from*	Mini-Suite fares from*	Club Class fares from*	Suite fares from*
\$5,466	\$9,314	\$11,541	\$13,566	\$21,261

2019 DEPARTURES | *Sapphire Princess®* | Mar 10 SUN | Oct 31* THU

*Fares based on 3/10/19 sailing. Fares for other dates may vary. Taxes, Fees and Port Expenses of up to \$797 are additional and subject to change. See page 31 for more details.
*Itinerary operates in reverse, Kuala Lumpur, Muscat, Rhodes and Toulon/Provence (La Seyne) replace Phuket, Cochin, Athens (Piraeus) and Monte Carlo.

early booking offer*

If you book early on either one of the two 37-day Indian Ocean & Europe Grand Adventure voyages, you'll receive a great array of perks! Book before August 31, 2018 to receive:

ONBOARD CREDIT

- \$500 per person booking in Balcony/Mini-Suite/Club Class/Suite
- \$200 per person booking in Interior/Oceanview

COMPLIMENTARY GRATUITIES

*See page 31 for full terms and conditions.

more to explore

11, 26 or 27 days

DAYS	ITINERARY	PORTS	SHIP	2019 DATES	Fares from*
11	India & Thailand	Singapore > Phuket > Colombo LATE NIGHT > Cochin > Dubai	Sapphire Princess®	Mar 10 SUN	\$1,619
11	Sri Lanka & Thailand	Dubai LATE NIGHT > Muscat (Mina Qaboos) > Colombo > Kuala Lumpur (Port Kelang) > Singapore	Sapphire Princess®	Nov 26 TUE	\$1,686
26	Dubai to London Grand Adventure®	Dubai LATE NIGHT > Salalah > Aqaba (for Petra) > Suez Canal transit > Athens (Piraeus) LATE NIGHT > Valletta (Malta) LATE NIGHT > Sicily (Messina - for Mt. Etna & Taormina) > Naples (for Capri & Pompeii) > Rome (Civitavecchia) > Florence/Pisa (Livorno) > Monte Carlo > Barcelona LATE NIGHT > Gibraltar > Lisbon LATE NIGHT > Paris/Normandy (Le Havre) > London (Southampton)	Sapphire Princess®	Mar 21 THU	\$3,846
26	London to Dubai Grand Adventure®	London (Southampton) > Paris/Normandy (Le Havre) > Lisbon > Gibraltar LATE NIGHT > Barcelona > Toulon/Provence (La Seyne) > Florence/Pisa (Livorno) > Rome (Civitavecchia) > Naples (for Capri & Pompeii) > Sicily (Messina - for Mt. Etna & Taormina) > Valletta (Malta) > Rhodes > Suez Canal transit > Aqaba (for Petra) > Dubai	Sapphire Princess®	Oct 31 THU	\$4,049
27	Mediterranean & Southeast Asia	Rome (Civitavecchia) > Naples (for Capri & Pompeii) > Sicily (Messina - for Mt. Etna & Taormina) > Valletta (Malta) > Rhodes > Suez Canal transit > Aqaba (for Petra) > Dubai LATE NIGHT > Muscat (Mina Qaboos) > Colombo > Kuala Lumpur (Port Kelang) > Singapore	Sapphire Princess®	Mar 10* SUN Nov 10 SUN	\$4,116 [†]

*Fares shown apply to minimum interior lead-in categories on a space-available basis at time of booking. Refer to princess.com for information and fares for other categories. Taxes, Fees and Port Expenses of up to \$655 are additional and subject to change. See page 31 for more details.

*Itinerary operates in reverse; Phuket, Cochin and Athens replaces Kuala Lumpur, Muscat and Rhodes.

†Fares based on 11/10/19 sailing. Fares for other dates may vary.

more ashore

See the sights during the day and experience the nightlife after dark with Late Night (9 p.m. or later) or Overnight calls.

across the sea

Travel between North America and Europe, even visiting iconic Europe ports, on a classic Transatlantic cruise. Ample time on board traversing the Atlantic Ocean is spent getting to know your ship, gambling in the casino with new friends, wine tasting or soaking in a hot tub watching Movies Under the Stars®. In the evenings, enjoy Broadway-style shows and savory meals at one of the many dining venues on board.



passages				13-29 days	
DAYS	ITINERARY	PORTS	SHIP	2019 DATES	Fares from [^]
15	Northern Europe Passage	Ft. Lauderdale > Azores Islands (Ponta Delgada) > Brussels/Bruges (Zeebrugge) > Rotterdam > Aarhus > Copenhagen	<i>Regal Princess</i> ®	Apr 14 SUN	\$2,024
15	Western Europe Passage	Ft. Lauderdale > Azores Islands (Ponta Delgada) > Lisbon > Bilbao > Portland (for Stonehenge) > Brussels/Bruges (Zeebrugge) > London (Southampton)	<i>Crown Princess</i> ®	Apr 16 TUE	\$2,024
15	Spanish Passage	Ft. Lauderdale > Azores Islands (Ponta Delgada) > Madeira (Funchal) > Casablanca (for Marrakech) > Seville (Cádiz) > Málaga > Barcelona	<i>Emerald Princess</i> ®	May 3 FRI	\$2,024
13	British Isles & Northern European Passage	Copenhagen > Kristiansand > Glasgow (Greenock) > Dublin > Cork (Cobh - for Blarney Castle) > Halifax > New York	<i>Regal Princess</i> ®	Sep 8 SUN	\$2,969
16	Western Europe Passage	London (Southampton) > Brussels/Bruges (Zeebrugge) > Portland (for Stonehenge) > Bordeaux (Le Verdon) > Bilbao > Lisbon > Azores Islands (Ponta Delgada) > Ft. Lauderdale	<i>Crown Princess</i> ®	Sep 22 SUN	\$2,294
14	Spanish Passage	Barcelona > Cartagena > Málaga > Casablanca (for Marrakech) > Santa Cruz de Tenerife > Azores Islands (Ponta Delgada) > Ft. Lauderdale	<i>Emerald Princess</i> ®	Nov 4 MON	\$1,551
29	Spanish Passage & Panama Canal Adventure	Barcelona > Cartagena > Málaga > Casablanca (for Marrakech) > Santa Cruz de Tenerife > Azore Islands (Ponta Delgada) > Ft. Lauderdale > Cartagena > Panama Canal (full transit of the Panama Canal including the Miraflores, Pedro Miguel and Gatun Locks) > Fuerte Amador > Costa Rica (Puntarenas) > San Juan Del Sur > Huatulco > Puerto Vallarta > Los Angeles	<i>Emerald Princess</i>	Nov 4 MON	\$4,116
17	Renaissance Explorer	Rome (Civitavecchia) > Naples (for Capri & Pompeii) > Sicily (Palermo) > Gibraltar > Seville (Cádiz) > Santa Cruz de Tenerife > Ft. Lauderdale	<i>Pacific Princess</i> ®	Dec 5 THU	\$2,564

[^]Fares shown apply to minimum interior lead-in categories on a space-available basis at time of booking. Refer to princess.com for information and fares for other categories. Taxes, Fees and Port Expenses of up to \$614 are additional and subject to change. See page 31 for more details.

[^]Fares shown apply to minimum interior lead-in categories on a space-available basis at time of booking. Refer to princess.com for information and fares for other categories. Taxes, Fees and Port Expenses of up to \$614 are additional and subject to change. See page 31 for more details.

cruisetours

Drive through the romantic Tuscan countryside before charting a course to the sun-kissed islands of the Mediterranean. Set sail along Norway's breathtaking fjords after discovering the timeless treasures of Prague's Old Town. A cruisetour with Princess® combines select Northern Europe or Mediterranean cruises with escorted land tours, taking you to each region's most alluring inland destinations. Immerse yourself in all that this legendary land has to offer.



Europe's Imperial Treasures

Cruisetour

tour 1

19 or 21 nights

2 nights Budapest, Hungary > 2 nights Vienna, Austria > 2 nights Prague, Czech Republic > 2 nights Berlin, Germany > 11-day Scandinavia & Russia cruise (see page 6) or 13-day British Isles & Northern European Passage cruise (see page 29)

Interior fares from*	Balcony fares from*	Mini-Suite fares from*	Club Class fares from*	Suite fares from*
\$7,424	\$8,166	\$8,841	\$9,476	\$11,474

2019 DEPARTURES

Regal Princess®

Departure	Tour	Departure	Tour	Departure	Tour
Apr 21	TOUR 1A	Jun 15	TOUR 1A	Aug 9	TOUR 1A
May 2	TOUR 1A	Jun 26	TOUR 1A	Aug 20	TOUR 1A
May 13	TOUR 1A	Jul 7	TOUR 1A	Aug 31	TOUR 1B
May 24	TOUR 1A	Jul 18	TOUR 1A		
Jun 4	TOUR 1A	Jul 29	TOUR 1A		

Tour 1A includes 11-day Scandinavia & Russia cruise shown on page 6.
 Tour 1B includes 13-day British Isles & Northern European passage cruise shown on page 29.
 *Fares based on 4/21/19 sailing. Fares for other dates may vary. Taxes, Fees and Port Expenses of up to \$284 are additional and subject to change. See page 31 for more details.
 Ocean Medallion™ experiences are available only on the ship.

Highlights of Spain

Cruisetour

tour 2

13, 17 or 20 nights

3 nights Madrid, Spain > 1 night Valencia, Spain > 2 nights Barcelona, Spain > 7-day Mediterranean cruise (see page 19), 11-day Grand Western Mediterranean cruise (see page 23) or 14-day Spanish Passage cruise (see page 29)

Interior fares from*	Balcony fares from*	Mini-Suite fares from*	Club Class fares from*	Suite fares from*
\$5,264	\$6,006	\$6,411	\$6,884	\$8,099

2019 DEPARTURES

Emerald Princess®

Departure	Tour	Departure	Tour	Departure	Tour
May 12	TOUR 2A	Jul 14	TOUR 2A	Sep 15	TOUR 2B
Jun 2	TOUR 2A	Aug 4	TOUR 2A	Oct 7	TOUR 2B
Jun 23	TOUR 2A	Aug 25	TOUR 2A	Oct 29	TOUR 2C

Tour 2A includes 7-day Mediterranean cruise shown on page 19.
 Tour 2B includes 11-day Grand Western Mediterranean cruise shown on page 23.
 Tour 2C includes 14-day Spanish Passage cruise shown on page 29.
 *Fares based on 5/12/19 sailing. Fares for other dates may vary. Taxes, Fees and Port Expenses of up to \$142 are additional and subject to change. See page 31 for more details.
 Ocean Medallion™ experiences are available only on the ship.

enthrall

Rising high out of the Atlantic Ocean, Ireland's Cliffs of Moher are an awe-inspiring sight. Located in County Clare, the cliffs stretch five miles long and 702 feet high. Visiting this miraculous site means witnessing nature in its purest form: jagged ancient rocks, salty sea air and cool, refreshing wind. On a clear day, you can delight in fantastic views, perhaps even spotting the Aran Islands. This site was also the setting for the "Cliffs of Insanity" in the classic romantic comedy *The Princess Bride*.



Ring of Kerry

Cruisetour

tour 3

16 or 20 nights



1 night Limerick, Ireland > 2 nights Killarney, Ireland > 1 night Cork, Ireland > 12-day British Isles cruise (see page 8) or 16-day Western Europe Passage cruise (see page 29)

Interior fares from*	Balcony fares from*	Mini-Suite fares from*	Club Class fares from*	Suite fares from*
\$5,243	\$6,391	\$7,066	\$7,808	\$10,373

2019 DEPARTURES

Crown Princess®

Apr 27	TOUR 3A	Jun 26	TOUR 3A	Aug 25	TOUR 3A
May 9	TOUR 3A	Jul 8	TOUR 3A	Sep 6	TOUR 3A
May 21	TOUR 3A	Jul 20	TOUR 3A	Sep 18	TOUR 3B
Jun 2	TOUR 3A	Aug 1	TOUR 3A		
Jun 14	TOUR 3A	Aug 13	TOUR 3A		

Tour 3A includes 12-day British Isles cruise shown on page 8.

Tour 3B includes 16-day Western Europe Passage cruise on page 29.

*Fares based on 4/27/19 sailing. Fares for other dates may vary. Taxes, Fees and Port Expenses of up to \$342 are additional and subject to change. See below for more details.

Ocean Medallion™ experiences are available only on the ship.

Classic Italy

Cruisetour

tour 4

13 or 17 nights



2 nights Venice, Italy > 2 nights Florence, Italy > 2 nights Rome, Italy > 7-day Mediterranean & Aegean cruise (see page 20) or 11-day Grand Western Mediterranean cruise (see page 23)

Interior fares from*	Balcony fares from*	Mini-Suite fares from*	Club Class fares from*	Suite fares from*
\$5,804	\$6,546	\$6,951	\$7,424	\$8,639

2019 DEPARTURES

Emerald Princess®

May 19	TOUR 4A	Jul 21	TOUR 4A	Sep 26	TOUR 4B
Jun 9	TOUR 4A	Aug 11	TOUR 4A	Oct 18	TOUR 4B
Jun 30	TOUR 4A	Sep 1	TOUR 4A		

Tour 4A includes 7-day Mediterranean & Aegean cruise on page 20.

Tour 4B includes 11-day Grand Mediterranean cruise on page 23.

*Fares based on 5/19/19 sailing. Fares for other dates may vary. Taxes, Fees and Port Expenses of up to \$95 are additional and subject to change. See below for more details.

Ocean Medallion™ experiences are available only on the ship.

*Lead-in fares are based on the lowest category stateroom for each category type. Launch Fares represent the lead-in introductory fares and are subject to change. Rates shown are per person, cruise or cruisetour only, based on double occupancy and do not apply to singles or third- and fourth-berth guests; contact Princess Cruises for third- and fourth-berth guest fares. Refer to princess.com for information and fares for oceanview cabins. This offer is based on space availability, is capacity controlled and applies to the sailing dates and stateroom categories shown on each itinerary. Fares may remain at a discounted level after this promotion. See princess.com for terms, conditions and definitions that apply to all bookings.

*Early Booking Offer: Onboard Credit offer is applicable to first/second-berth guests only. Third/fourth-berth guests are not eligible. Guests with single occupancy will receive the per stateroom credit amount. Onboard spending money may be used on a single voyage only, is not redeemable for cash, cannot be used for the casino and expires at the end of that voyage. Complimentary gratuities are based on the pre-payment by Princess Cruises on behalf of the guest the suggested gratuities in the amounts of USD \$15.50 per day for Suites, USD \$14.50 per day for Mini-suites and Club Class and USD \$13.50 per day for Interior, Oceanview and Balcony staterooms. Complimentary gratuities do not include gratuities added for bar charges, dining room wine accounts or Lotus Spa services. Offer is not transferable, non-refundable and may not be combinable with other select offers or other onboard credit. Offer expires August 31, 2018, for applicable 2019 sailings.



shore excursions

Adventures that infuse your soul with discovery create ever-lasting memories. From formal gardens to Italian farmhouses, ancient artifacts to Baroque palaces and cheese tastings to canal cruises, we offer authentic experiences that envelop your senses. Knowledgeable local guides offer unique insights and Princess excursions guarantee your return to ship. And by joining forces with Discovery™ and Animal Planet™, we've created customized tours to thrill and inspire the entire family. Your perfect excursion awaits!



COPENHAGEN, DENMARK

EVENING COPENHAGEN CANAL CRUISE

Our More Ashore Late Night departures allow you to enjoy a magical canal cruise under starry skies and to explore the "Venice of the North." Among the highlights are beautiful Amalienborg Palace and St. Savior's Church. Travel leisurely down Christianshavn's picturesque canals and experience the colorful old Nyhavn waterfront.



Discovery
RECOMMENDED

naples, italy

POMPEII, SORRENTO & CHEESE TASTING

Sample the bounty produced from Mt. Vesuvius' fertile volcanic soil as a culinary journey takes you along the coastline of Italy's Campania region. Your tour includes a visit to the resort town of Sorrento and a local farmhouse, a tour of UNESCO-listed Pompeii's ancient ruins, and a stop at a cameo factory.



MYKONOS, GREECE

BEST OF DELOS & MYKONOS

Enjoy a walking tour of the sacred sites of Delos and Mykonos. Begin your day at the Agora of the Competialists. This open area has a round shrine where offerings were placed. Next, you'll continue to the Sanctuary of Apollo, known as the heart of Delos. You will see the base of the marble Statue of Apollo, parts of which are housed in the Delos museum; make a visit there during your free time on this excursion.





ST. PETERSBURG, RUSSIA

EVENING AT CATHERINE PALACE

Experience 18th-century court life during an elegant evening visit to the Catherine Palace. Tour the impressive collection of imperial coaches, before being greeted by “Catherine the Great” herself in the Throne Hall, at a reception accompanied by lively folk music.



BEST PRICE GUARANTEE

Whether you're a first-time voyager or a travel connoisseur, Princess Cruises® excursions have long been known for exceptional quality and local expertise.

Now the extraordinary value these experiences offer is guaranteed as well...with the new Princess Cruises Shore Excursions Best Price Guarantee!

And if you find the same excursion somewhere else for a better price, we'll refund 110% of the difference.

For more details and full terms and conditions, visit princess.com/excursions

GIBRALTAR, GREAT BRITAIN

WORLD WAR II TUNNELS & EUROPA POINT

Travel back in time to a fascinating era. Aficionados of World War II shouldn't miss out on this walking tour of Gibraltar's massive fortification and elaborate tunnel complex. The exhibit of maps and vintage photographs details strategic operations. Then enjoy spectacular views from Europa Point, a lookout point at the very top of the Rock of Gibraltar.



DUBLIN, IRELAND

POWERSCOURT ESTATE & WATERFALL



A full day of fresh air, breathtaking views and natural beauty is yours to enjoy as you explore Powerscourt in the Wicklow Mountains. View the formal gardens, the Dolphin Pond and the towering Powerscourt Waterfall — Ireland's highest. Your visit to this extraordinary estate begins with a complimentary traditional Irish lunch catered by a local pub.

your time at sea



With Princess®, you have nothing but time to enjoy everything your cruise ship has to offer in between exploring Europe's glorious history and fabled cities. The rousing music of a Broadway-style production. The decadent flavors of a world-class dining experience. From thrilling entertainment options to relaxing activities that soothe your soul, you can have it all on a cruise through the spellbinding lands of Europe.

"Having been an avid cruiser for many years, I can't say enough how much we love [Princess]. Impeccable ship, amazing staff, yummy food and incredible destinations."

— APRIL, BLOGGER
@MOMMYNAMEDAPRIL

timeless indulgences

While cruising the breathless shores of Europe, you'll discover our range of authentic flavors is as limitless as the sea. With Princess®, every meal is a delicately crafted masterpiece, made with fresh ingredients and inspired by supremely talented award-winning chefs. Each meal is an adventure all its own and each dish you savor will expand your palate and enhance your experience.

Expand your palette with specialty dining

After immersing yourself in the storied regions of Europe, embrace the smooth European charm of Sabatini's™ Italian Trattoria, offering handmade pastas inspired by Chef Angelo Auriana. Savor cooked-to-order steaks and premium seafood at Crown Grill, a refined steakhouse with a theater-style open kitchen. Or embark on a culinary journey of fresh ingredients and a memorable six-course dining experience at SHARE™ by award-winning Chef Curtis Stone.



keep it casual

Take in scenic views of Europe's breathtaking vistas and enjoy complimentary treats like our Neopolitan-style pizza — deemed the “Best Pizza at Sea” by *USA TODAY*. Sample a menu that changes throughout the day with tasty delights, such as freshly baked cookies or grilled panini sandwiches at the International Café. Or stop by the Horizon Court or World Fresh Marketplace for a handcrafted salad or sandwich.

LOCAL EATS

Enjoy some of Europe's authentic flavors on board — from linguine with seafood and basil to Moroccan vegetable ragout and homemade limoncello. Or relax with a British pub lunch, including local favorites such as bangers and mash or shepherd's pie.

MAKE A TOAST

There's a bar and lounge to complement just about every mood, offering a diverse selection of cocktails, cold brews and stellar wines. Top off your afternoon with a lunchtime margarita at the Outrigger Bar. Slip gently back in time as you sip on a classic martini at Crooners, a vintage Sinatra-era cocktail lounge. Enrich your palate with a fine vintage at Vines wine bar, which is located in a charming corner of the Atrium and contains one of the best-stocked cellars at sea.

BALCONY DINING

Enjoy an elegant meal al fresco on your own balcony with dedicated waitstaff, all while soaking in the views of Europe's most romantic cities. Flowers, Champagne and a four-course dinner or delicious breakfast make this a romantic experience you'll never forget.

engaging entertainment

While Europe's storied cities take your breath away, the entertainment beckoning you from every corner of your Princess® ship will leave you amazed. From being dazzled by shows to enjoying your favorite flick, the only real choice is what to do next.



CURTAIN UP!

We've partnered with Broadway legend Stephen Schwartz to bring you two original productions. ***Magic to Do*** combines a spellbinding story of magic with some of his most popular songs. ***Born To Dance*** traces the journey of Broadway's greatest choreography through the eyes of a professional dancer.

Princess® also showcases the talents of professional singers and dancers and an orchestra in ***Encore***, an original production set in an elegant Montecito garden. And if you're a fan of the popular TV singing competition, *The Voice* you'll love our version of the show — ***The Voice of the Ocean***.



LOCAL ENTERTAINMENT

Enjoy local entertainment on board, such as music and dance lessons to connect even more with Europe. When sailing the Mediterranean, indulge in a Flamenco show in Barcelona. Learn how to Irish step dance in Dublin. Or delight in the traditional tunes of Greenock.



FEELING LUCKY?

Try your hand at all your favorite Vegas games in our onboard casino — from blackjack, roulette and craps to video poker and slots. Will you be the lucky one to hit the jackpot?



THRILLING NIGHTLIFE

Your Princess® ship comes alive at night with entertainment from bow to stern. Pianists fill our bars and lounges with sweet, melodic tunes. You can also catch top-rated comedians and illusionists in many of our lounges.

MOVIES UNDER THE STARS®

You may be seated poolside, but you'll feel as if you're right in the action when you attend a movie, concert or sporting event in our 300-square-foot outdoor movie theater. Don't forget your complimentary popcorn!

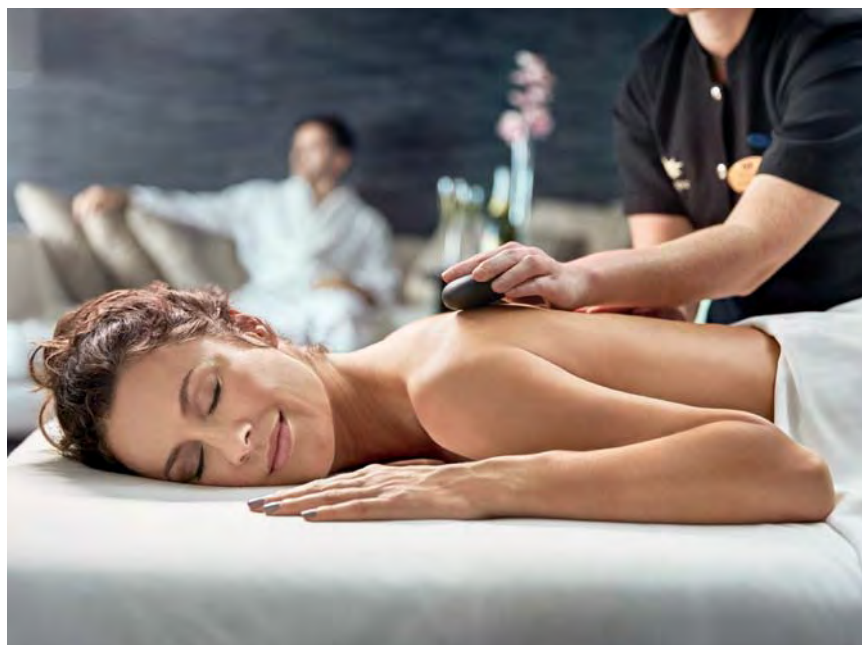


younger cruisers

After stepping back in time to explore Europe's ancient ruins and fairytale castles, your children will love hanging out in our youth and teen centers — developed with Discovery™ to provide enriching activities for younger cruisers. From arts and crafts projects to movie screenings and dance classes, there's always something exciting to learn and enjoy.

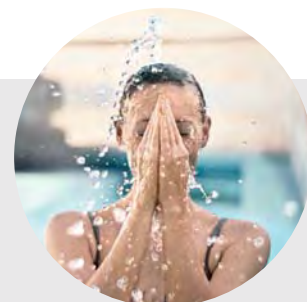
joyful rejuvenation

Welcome to a place of well-being. Our ships' amenities, from the Lotus Spa® to The Sanctuary, pivot you into a world just as peaceful as your surroundings on shore. The moment you step aboard, you'll be immersed in a world of relaxation and harmony, all as you float gracefully upon the open seas.



LOTUS SPA®

Exploring the sweeping castles of Europe can be demanding, so set some time aside afterward to relax in our award-winning **Lotus Spa** — named “Best Spa on a Cruise Ship” by Spafinder Wellness 365.™ Spoil yourself with an aroma stone therapy massage or a detoxifying ocean wrap, or enjoy an array of steam and sauna options in the Enclave® — Princess’ largest ever thermal suite.

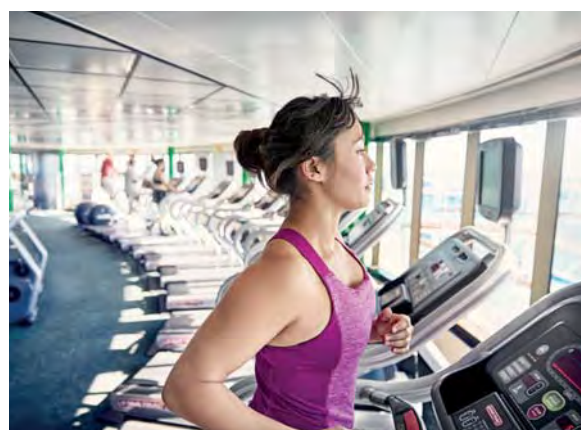


the sanctuary

Escape to a peaceful upper-deck oasis dedicated to complete tranquility. Enjoy chilled face towels and a unique menu of healthy beverages to enjoy while settling into the comfort of a plush lounge chair. Or rejuvenate your body before discovering the next European village with an al fresco massage in our private cabanas.

YOUR BEST NIGHT'S SLEEP

After a long day wandering through the storied cities and sun-splashed islands of Europe, sink into the Jacquard-woven cotton linens of the **Princess Luxury Bed**. Developed by board-certified sleep expert Dr. Michael Breus and HGTV design star Candice Olson, this blissful bed was scientifically designed to capture the pure essence of a good night's sleep.



STAY IN SHAPE

Hop on a treadmill to burn off the previous night's indulgences, or jog around our outdoor track to enjoy expansive views of European shorelines. From free and machine weights to yoga and spinning classes, our state-of-the-art fitness centers offer everything you need to stay in shape during your voyage.

your home, away from home



Nothing tops off a long day of onshore exploration like stretching out on the soft, circular-knitted mattresses of our Princess® Luxury Beds. And you can rest comfortably knowing our attentive and friendly staff is catering to your every need. Indulge in a wealth of amenities or simply close your eyes and experience the deepest and most comfortable sleep at sea. With so many signature services and luxuries, you'll come to view your stateroom as a true home away from home.

THE SUITE LIFE

Enhance your Europe voyage with some of the most incredible accommodations at sea. With up to 932 square feet of living space with large balconies and floor-to-ceiling glass doors, you'll travel

the world in VIP style and comfort when you reserve a Princess Suite. Convenience, personalized service and superb dining to priority embarkation and disembarkation, plus a wealth of other amenities. Your every

desire will be met with VIP touches, including priority dining and shore excursion reservations, a daily mimosa breakfast, exclusive lounge areas and so much more. See the grid on opposite page for details.





all staterooms feature:

- The Princess Luxury Bed
- Refrigerator
- Flat-panel television
- Private bathroom with shower
- Complimentary 24-hour room service^{^^}
- Hair dryer
- Digital security safe

OUR MOST LUXURIOUS OPTIONS

For those seeking more space and added amenities, Princess has options including our spacious mini-suites and expansive full suites. Enjoy more living space, sofa beds, and separate seating areas, and wonderful enhanced amenities.



AMENITIES	SUITE	CLUB CLASS	MINI-SUITE
Balcony with luxury furniture including 2 loungers, 4 chairs, table and ottoman	✓		
Balcony with standard furniture including 2-4 chairs, table and ottoman		✓	✓
2 floor-to-ceiling sliding glass doors	✓		
1 floor-to-ceiling sliding glass door		✓	✓
2 flat-panel televisions	✓	✓ ^o	✓ ^o
Our very best Mini-Suites		✓	
Club Class Dining*	✓	✓	
One-time complimentary wine setup [^]	✓	✓	
Evening canapés, upon request	✓	✓	
Welcome glass of Champagne [‡]	✓	✓	✓
One complimentary mini-bar setup [‡]	✓	✓	
Separate sitting area with sofa bed, chair and table	✓	✓	✓
Upgraded bathroom amenities	✓	✓	✓
Bathroom tub and massage shower head	✓	✓	✓
Separate Shower	✓		
Upgraded terry shawl bathrobes	✓	✓	
Spacious walk-in closet	✓		
Complimentary use of the Lotus Spa® Thermal Suite [†]	✓		
Complimentary dinner in a specialty restaurant on embarkation day ^{**}	✓		
Priority specialty dining and shore excursion reservations	✓		
Complimentary Laundry and professional cleaning services	✓		
Priority embarkation and disembarkation at the beginning and end of your cruise	✓	✓	
Priority disembarkation at tender port	✓		

MORE OPTIONS



BALCONY

A front-row seat for spectacular scenery on your cruise with a floor-to-ceiling sliding glass door.



OCEANVIEW

Includes all our standard Princess amenities, with a broad picture window to bring in light and views.



INTERIOR

Our most affordable option, the interior stateroom features two twin beds or a queen-size bed.



WHEELCHAIR-ACCESSIBLE

Full wheelchair-turning space, roll-in shower with grab bars and fold-down seat, easy-access closet, and accessible writing desk. Details at princess.com.

Note: Amenities represent typical arrangements and may vary by ship. Certain stateroom categories may vary in size and configuration by ship. Stateroom views are considered unobstructed unless noted otherwise. Some categories have portholes versus picture windows. Some staterooms are partially to fully obstructed, as shown on deck plans. Obstructions do not include certain nautical items like handrails, dividers or ship hardware. For balcony staterooms, the view is determined from the perspective of the balcony railing. Balconies may have either solid steel or glass railings. Upper berth and bed ladder capacities are 250 lbs. Staterooms that can accommodate rollaways have two lower berths and one upper berth, and the staterooms can accommodate a fourth berth as a rollaway bed upon request at time of reservation. There are a limited number of rollaway beds per ship, per voyage. Use of rollaway beds restricts cabin space. Call (65) 6922 6788 for more information. *Open for breakfast and dinner daily as well as lunch on sea days. †Includes ½ bottle of red wine and ½ bottle of white wine on embarkation day. ^^Charges apply for pizza delivery and beverages. Subject to change. ‡On select ships. Thermal Suite is not available on Royal Princess®, Regal Princess®, Majestic Princess®, Golden Princess®, Grand Princess®, Pacific Princess®, Sun Princess® and Sea Princess®. ‡Pacific Princess® only has one flat-panel TV. **Applicable on cruises six days or longer. ‡Complimentary mini-bar setup is one-time only per stateroom for guests 21 and over. Welcome glass of Champagne is for guests 21 and over.



welcome aboard



Our Princess fleet for Europe in 2019 includes seven spectacular ships. Whether you love activity or crave tranquility, each Princess ship offers an array of our signature engaging activities, exciting entertainment and fresh, delicious cuisine — everything you need to relax, enjoy your vacation and come back new.

our europe fleet

	Sky Princess SM	Regal Princess [®]	Caribbean Princess [®]	Crown Princess [®]	Emerald Princess [®]	Sapphire Princess [®]	Pacific Princess [®]
Guests	3,560	3,560	3,140	3,080	3,080	2,670	670
Balconies	Over 1,400	Over 1,400	Over 800	Over 800	Over 800	Over 700	Over 200
Movies Under the Stars [®] (poolside theater)	✓	✓	✓	✓	✓	✓	
The Sanctuary (relaxing retreat for adults)	✓	✓	✓	✓	✓	✓	
Lotus Spa [®] & Fitness Center	✓	✓	✓	✓	✓	✓	✓
Italian-inspired Piazza	✓	✓	✓	✓	✓	✓	
The SeaWalk [®] & SeaView Bar		✓					
International Café (24-hour coffees, desserts, sandwiches and tapas)		✓	✓	✓	✓	✓	
Specialty Restaurants							
Chef's Table Lumiere	✓	✓					
Crown Grill SM (steak & seafood)	✓	✓	✓	✓	✓		
Planks BBQ			✓				
Sabatini's SM Italian Trattoria	✓	✓	✓	✓		✓	✓
SHARE SM by Curtis Stone					✓		
Steamers Seafood			✓				
Sterling Steakhouse SM						✓	✓
The Salty Dog Gastropub SM				✓	✓		
Vines (wine bar)	✓	✓	✓	✓	✓	✓	

Venues and dining options vary by ship. Nominal charges may apply. See deck plans on princess.com/ships for details.

need help planning?

Princess Cruise Vacation Planners are a dedicated resource to help you every step of the way through the planning process of your cruise vacation. And the best part is, they are absolutely FREE! Call (65) 6922 6788 for more information.



PRINCESS CRUISES

come back new®



RECOMMEND MAGAZINE
13-TIME WINNER



USA TODAY



TRAVELAGE WEST



TRAVEL + LEISURE



FOOD & WINE
MAGAZINE



CRUISE INTERNATIONAL (UK)



discover the world
with Princess®

ALASKA • ASIA • AUSTRALIA & NEW ZEALAND • CALIFORNIA & PACIFIC COAST • CANADA & NEW ENGLAND • CARIBBEAN
EUROPE • HAWAII • JAPAN • MEXICO • PANAMA CANAL • SOUTH AMERICA • SOUTH PACIFIC • WORLD CRUISE

BOOK NOW

 CONTACT YOUR TRAVEL AGENT
 [PRINCESS.COM](https://www.princess.com)

 CALL (65) 6922 6788

YOUR PROFESSIONAL TRAVEL AGENT



PRINCESS CRUISES

come back new®

Carnival Plc (Singapore Branch)
Marina Bay Financial Centre
10 Marina Boulevard Tower 2 #14-02
Singapore 018983
Fax: (65) 6922 6789

Telephone
Singapore: (65) 6922 6788 / (65) 6922 6787
Malaysia: 1 (800) 806656 / 1 (800) 806657 (Toll Free)
Indonesia: (007) 803-651-0004 (Toll Free)