

# 8D6/7N WINTER SKI KOREA

KRWS07/KRWS08



## FOLLOW US....

Gear up for a winter adventure in Korea as you ski up a storm, get up close and personal with fluffy animals and drink in the resplendent mountain and city views.



SKI ACTIVITIES



Whisper System



Full Refund Warranty



Travel Validity Period:  
Winter Nov 2022 - Mar 2023



**SUNTEC SINGAPORE CONVENTION & EXHIBITION CENTRE**

1 Raffles Boulevard, Level 2 Crescent 2, Singapore 039593  
(Beside link bridge to Marina Square/Opposite Don Don Donki #02-379-387)

+65 6958 8888

[www.euholidays.com.sg](http://www.euholidays.com.sg)

[sales@euholidays.com.sg](mailto:sales@euholidays.com.sg)

## HIGHLIGHTS

### INCHEON

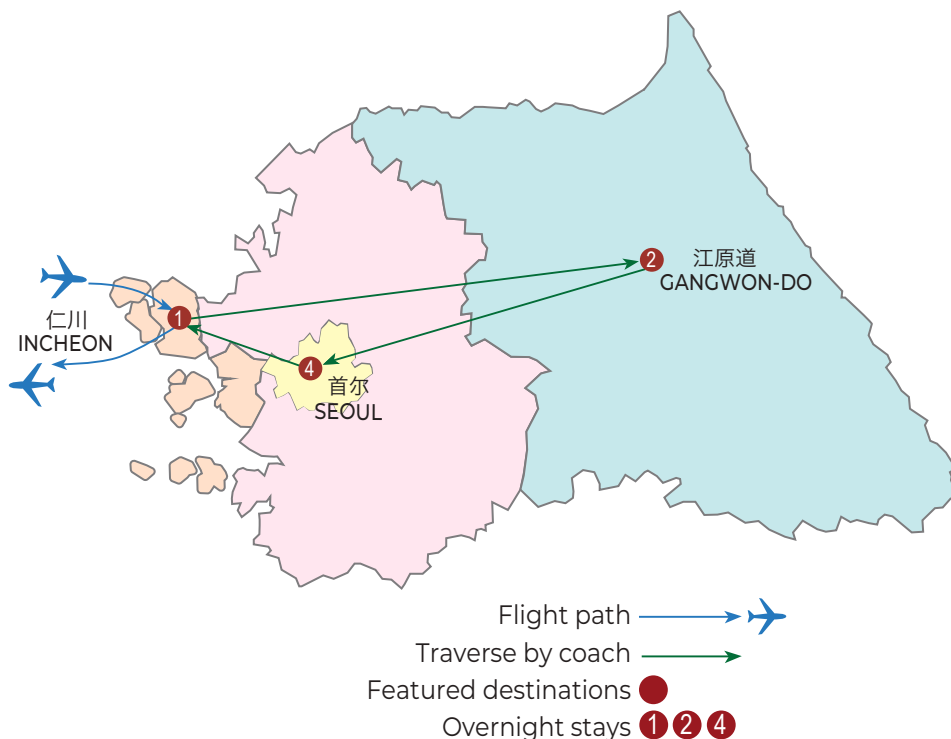
- Open Port Electric Buggy
- Jayu Park
- Songwoldong Fairytale Village
- Chinatown
- Jjajangmyeon Museum
- Yeongjongdo Seaside Rail Bike

### GANGWON-DO

- Nami Island
- Petite France
- Mount Seorak Scenic cable car
- Daewallyeong Farm Sheep feeding
- DIY Experience
- Ski Activities
- Alpaca World
- Garden of Morning Calm LED Illumination

### SEOUL

- Lotte World Theme Park
- Lotte Seoul Sky
- Dongdaemun Shopping
- Tongin Market with Brass Coins experience
- Sinchon Shopping Street



#### DAY 1 HOME ▶ INCHEON

Assemble at the airport for your flight to Incheon.

Note: For tours travelling on SQ600 - Upon arrival, transfer to your hotel and rest for the day.

#### DAY 2 INCHEON ▶ GANGWON-DO

Breakfast, Lunch, Dinner

Start off the day by travelling to **Petite France**, a picturesque French-themed cultural village with pastel-coloured buildings set against beautiful mountains and a lake. After that, head to **Nami Island** via ferry, for some romantic pictures at the famous lane of white birch trees. Last but not least, get up close to some fluffy alpacas in **Alpaca World**, where you'll get to touch, feed and walk with them. Who can ever resist these adorable animals?



#### DAY 3 GANGWON-DO

Breakfast, Lunch, Dinner

Begin your tour on a **scenic cable car** ride up to **Mount Seorak** and take in the breath-taking panoramic views. Upon reaching the top, you may access to the peak **Kwongseumseong Fortress**. After that, arrive **Daewallyeong Farm** for a chance to experience **sheep feeding** and **Do-it-yourself experience**.

#### DAY 4 GANGWON-DO ▶ SEOUL

Breakfast, Lunch, Dinner

Kick-off the day with exciting snow activities, which comes inclusive of **ski suit and equipment rental**. In the evening, make your way to the **Garden of Morning Calm** to enjoy the stunning LED illuminations as they light up the garden.



## DELICACIES

### Meal Plan

6/\*7 Breakfasts, 5 Lunches, 4 Dinners

### Specialties

- Upgraded Ginseng Chicken Abalone Soup (Michelin)
- Hearty Korean Traditional Rice Set
- Pork Cutlet
- Pork back-boned and Potato soup
- Korean BBQ
- Chicken Dakgalbi
- Lunch Box
- Nolboo Army Stew
- Jjajangmyeon + Sweet Sour Pork

## ACCOMMODATIONS

AS STATED OR SIMILAR

- \*1N Incheon Royal Emporium Hotel
- 1N Gangwon Seorak Daemyung Resort
- 1N Ski Resort
- 4N Seoul Novotel Hotel

# 8D6/7\*N WINTER SKI KOREA



## DAY 5

### SEOUL

Breakfast, Dinner

Today, visit **Lotte Seoul Sky** and **access to Sky Deck** via sky shuttle to enjoy panoramic view of Seoul city. Then, proceed to Seoul's biggest indoor and outdoor theme park, **Lotte World**, to experience the thrilling rides. This evening, get ready to shop till you drop at **Dongdaemun**.

## DAY 6

### SEOUL

Breakfast, Lunch

This morning, make a stop at a **Ginseng Gallery** and **Cosmetic Shop** for a spot of shopping. Then head over to **Traditional Tongin Market** that was converted to Korean street vendors after the Korean War. Over here, you can experience making your own **lunch box** with food from different stores, purchased with **brass coins**. Continue on to the popular **Sinchon shopping** districts where you can find affordable and trendy apparels.

## DAY 7

### SEOUL

Breakfast

Enjoy the day free at leisure to explore Seoul's famous sights and attractions on your own.

## DAY 8

### SEOUL ▶ HOME

Breakfast, Lunch

This morning, travel to **Yeongjongdo Seaside Rail Bike** to enjoy the unique experience of pedalling on a 4-seater rail bike on the rail tracks. Then, move to the **Open Port cultural district** and ride a **Eco-friendly Electric Buggy** to a few photo stops. Enjoy views of the port area at the Western-style **Jayu Park** before taking some snapshots with the street murals at **Songwoldong Fairytale Village**. Stop by **Chinatown** to see the colourful wall illustrations before visiting the **Jjajangmyeon Museum** to learn the history behind Koreans' favourite Chinese dish. Finally, make a pit stop at the **Healthy Liver Showroom** for some last-minute shopping before we transfer to Incheon International Airport for your flight back home.

## Remarks:

1. The Company reserves the right to alter tour itineraries, travel arrangements and accommodation due to unforeseen changes, weather conditions, Vaccinated Travel Lane rules and PCR procedure.
2. Tour itinerary, Hotel details and inclusions are based on English itinerary.
3. Tour is conducted in Mandarin unless otherwise stated.
4. Tour leader assignment is subjective and at the discretion of the Company.
5. Any detour is subject to USD250 charge per pax.
6. Any deviation is subject to minimum SGD250 fare difference per pax.

