

台湾 TAIWAN

Nov 2023 - Mar 2024



Extra Miles, Extra Smiles

KNOWLEDGE & EXPERIENCE

Armed with vast travel knowledge and invaluable experience, our staff are well-equipped to assist our customers in planning their holidays to suit their needs. The company provides all staff with comprehensive in-house training, on-the-job training, and external courses led by professionals in the field. These value-added programmes focus on enriching our staff's knowledge and improving their expertise so as to provide the best travel experience for all destinations, worldwide.

PASSION & LOVE

When it comes to travel, there is no one more passionate and enthusiastic than us at EU Holidays. Our staff's love and dedication for their work drive them to deliver excellent, quality service. They are trained to be attentive to every detail of our customers' needs so as to fulfil what the customer desires, as much as possible.

EXCELLENT QUALITY MADE AFFORDABLE

Quality should never be compromised for affordability. This is why at EU Holidays, we believe in having the best of both worlds. Our tour packages are customised to offer the best value for your money - an attractive price point, 4- to 5-star accommodations, scrumptious meals, and an experience of a lifetime. EU Holidays is the only agency that offers you a night's stay in a 5-star Hilton hotel in Venice as well as a 5-star Heritage hotel in Interlaken.

INNOVATING TRENDSETTERS

EU Holidays has always strived to stay ahead of the latest trends, especially for travel and technology. Our company was the first travel agency to introduce exclusive tours to the Norway Arctic Circle, thus kick-starting the popular trend of winter holidays to Finland. We also make effort to reach out to tourism organisations and companies overseas to secure the best arrangements for our tour packages, tour activities and accommodations. One example is our Northern Europe tours, where we have made special arrangements for our customers to stay in the newly-launched, spacious glass igloos in Finland. We are also the sole distributing partner for exclusive sledging activities on Mt. Bussalp for our Switzerland tours.

DIVERSE CHOICES & OPTIONS

EU Holidays is well-known for our ability to design different itineraries to cater for various clienteles. Each itinerary can be specially personalised to fit every customer's needs, interests and preferences, including the option to extend your stay. We also launch new itineraries and destinations frequently because we believe in creating novel and exclusive experiences for our customers. At EU Holidays, we take special effort to craft a wide variety of unique itineraries that customers can choose from, such as country-focused or multi-countries packages.

REPUTATION & AWARD WINNING

Over the years, EU Holidays had received many prestigious awards, such as the Singapore Prestige Brand Award from the Association of Small & Medium Enterprises (ASME) and the Singapore Quality Class certification from Enterprise Singapore. Our company was voted the No.1 Travellers' Choice for Europe, USA, Japan and China by Weekender Singapore for 2019. EU Holidays was also awarded the TripZilla Excellence Awards 2022 for our Europe, Australia, Exotic, and Japan tours. We were also named the top travel agent by our supporting partners, namely Cathay Pacific Airways, Emirates, Etihad Airways, Finnair, Lufthansa, Qatar Airways, Kaksilauttanen Arctic Resort, and Jungfrau Region Grindelwald Sledging.



We'll do it for you!



ABOUT EU HOLIDAYS

MISSION

Delighting every travel experience

VISION

Be Travellers' FIRST choice

VALUES

1. Deliver what we promise
2. Serve customers passionately
3. Do what we do, best
4. Make work fun
5. Care for employees
6. Stay as one big family as we grow
7. Be a good business partner
8. Be socially responsible

PROGRESS AND MILESTONES

Founded in late 2010, EU Holidays was established by driven, dynamic and innovative individuals who banded together with the sole intention of offering customers a whole new travel experience and bring innovations to travel industry. Within 13 years of business operations, we have expanded EU Holidays and opened three subsidiaries: EU MICE, EU Asia Holidays and EU Vacations (Malaysia). We have also diversified our business to include outbound, inbound, corporate, wholesales, and MICE products and services.

Since 2012, EU Holidays Group has consistently been voted as the top travel agency for various destinations such as Europe, Arctic, USA, Exotic, Japan, Korea, China, and more by our industrial partners, namely: Weekender Singapore, Tripzilla.sg, escape! Magazine, and Travel Journal. Over the years, we have also been named as the top travel agent by our supporting partners: Cathay Pacific, Emirates, Etihad Airways, Finnair, Lufthansa, Qatar Airways, Kakslauttanen Arctic Resort, and Jungfrau Region Grindelwald Sledging.

In 2016, EU Holidays went through the year-long Customer-Centric Initiative (CCI) programme and successfully attained the Singapore Service Class certification from the Standards, Productivity and Innovation Board (SPRING) Singapore. The following years also saw EU Holidays receive the Singapore Prestige Brand Award from the Association of Small & Medium Enterprises (ASME) and the Singapore Quality Class certification awarded by government agency Enterprise Singapore.

With our unparalleled curatorial expertise and leading presence in the travel market in Singapore, we will strive to serve with the same passion to delight your every travel experience!



Singapore's

BIGGEST POOL OF



ANDY
THONG



CONNIE
HAY



CHRIS
TEO



ONG
KAH HOO



ANNA
ANG



KEK
OOI LENG



TEVIN
SUA



PHILIP
CHIN



DING
JUN BIN



DYLAN
TEOH



KEVIN
CHENG



TIMOTHY
WEE



RICKY
TIANG



SHAWN
LAI



LUKE SOH



SIEW
HOON



JOANNE
HO



MERELYN
LEONG



ANDY
YUAN



ANN SOO



JASON
YEONG



ELVIN
MOK



LEOW
SHEUE
JUAN



NANCY
LIAW



CHRIS
CHIN



FRANKIE
KHNG



PACER
LIM



KENNETH
NG



SAMMY
WAN



ANN YEO



RONALD
QUEK



WHYEE
CHONG



LAI
JAR WEI



RUSSELL
TAN



GIDEON
TNG



CHRISTTON
NG



CALVEN
TEE



DAVID
LEE



SALLY
LIM



VICKY
TAN



LISA POH



KOK
AI LING



WONG
TIAN BAO



JASON
ANG



PHILIP
POH



ALICIA
PHANG



ELAINE
LAI



PAUL TEE



KAT
CHONG



ADELINE
ONG



NICOLE
SEAH



EDDY
LOH



BEN LUM



IVY
ER



APPLE
YANG



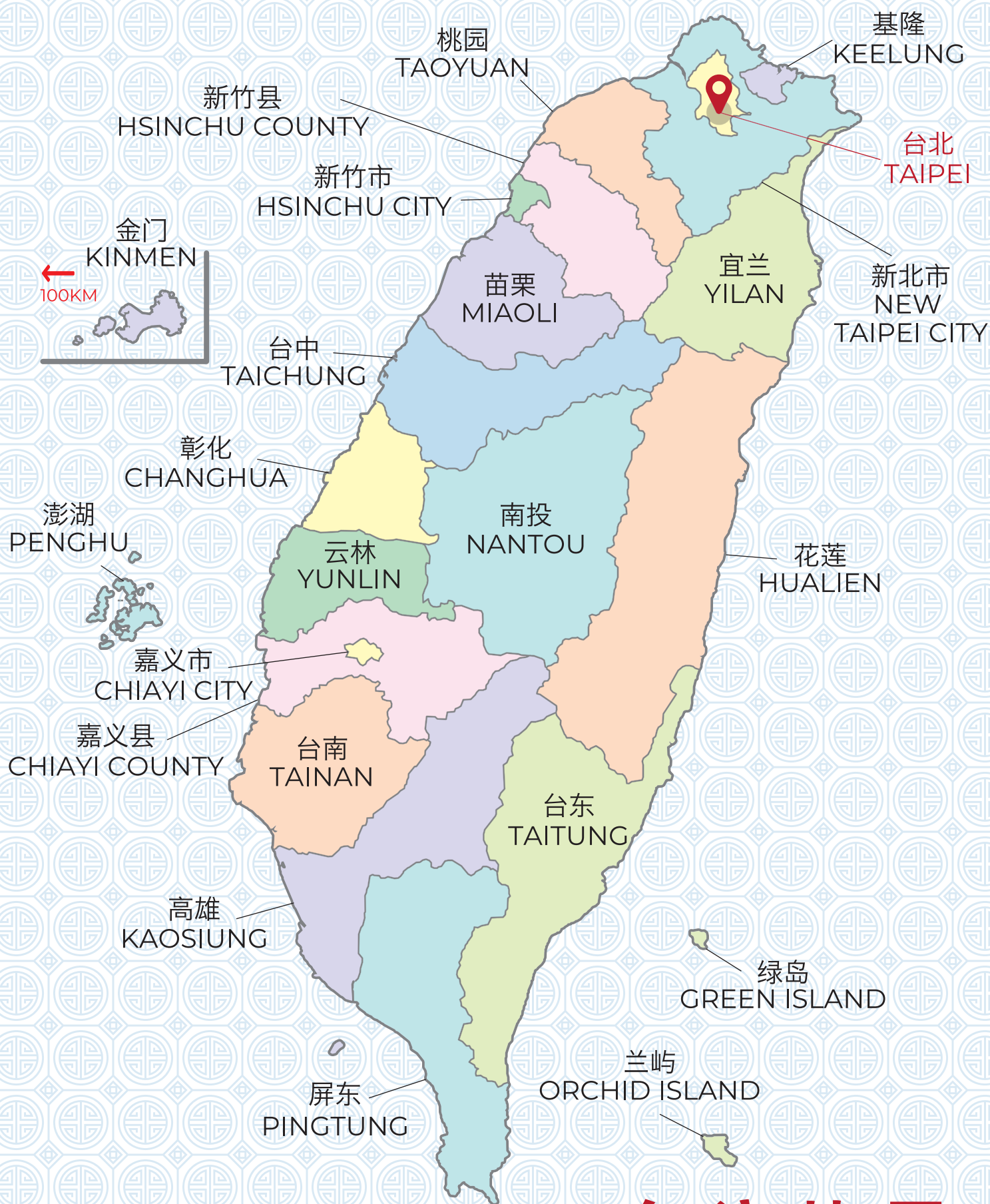
PROFESSIONAL *TOUR MANAGERS*



CONTENTS



- 06 9D7N Taiwan All-in Deluxe
TWDLXW
- 10 9D7N Refreshing Taiwan Alishan
TVALIW
- 14 9D7N Taiwan Hakka & Tribal Experience
TWHAKW
- 18 7D5N Taiwan Family Fun + Leofoo Village
TWFFPW
- 22 7D5N Taiwan Delights
7TWTPEW
- 26 8D7N Taiwan Wuling Cycling Tour
TWCYWW



台湾地图
TAIWAN MAP

9D7N

TAIWAN *All-in Deluxe*

9天7晚 台湾全览豪华旅游

TWDLXW | Nov 2023 - Mar 2024

SCAN FOR
DIGITAL COPY



COUNTRY FOCUSED

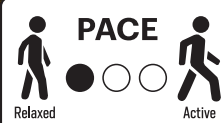
Indulge in what Taiwan has to offer! Ranging from night markets to famous shopping districts, cultural sites to historical places and various type of cuisines, it just has everything you can wish for!

JIUFEN NIGHT VIEW

I WAS
HERE!



Wifi
Router



HIGHLIGHTS

TAIPEI

- Shifen Waterfall
- Shifen Old Street
- Release Sky Lantern
- Jiufen Old Street
- Chiang Kai-Shek Shilin Residence
- Huashan 1914 Creative Park
- Shilin Night Market
- DIY Pineapple Tart

HUALIEN

- Qixingtian Beach
- Taroko National Park

TAITUNG

- Cycle @ Mr Brown Avenue
- Zhiben Hot Spring

KAOHSIUNG

- Old Railway Bridge
- Buddha Memorial Hall
- SKM Park Outlets
- Liuhe Night Market

NANTOU

- Wenwu Temple
- Cable Car ride @ Sun Moon Lake
- Formosan Aboriginal Culture Village
- Cingjing Farm & Skywalk

TAICHUNG

- Fengjia Night Market



DELICACIES

Meal Plan

7 Breakfasts, 5 Lunches, 3 Dinners

Specialties

- Eunuch Chicken Cuisine
- Manbo Sunfish Cuisine
- Taiwanese Cuisine
- Shaoxing Cuisine
- MICHELIN Guide Bib Gournand Restaurant

4-5★ HOTELS

TAIPEI Chateau de Chine Sinjhuang

HUALIEN Chateau de Chine Hualien

TAITUNG Chihpen Century Hotel

KAOHSIUNG Chateau de Chine Kaohsiung

NANTOU Tai-Yi Red Maple Resort

TAICHUNG The Splendor Hotel Taichung

TAIPEI Caesar Metro Taipei

*Note: Hotels subject to final confirmation. Should there be changes, customers will be offered similar accommodations as stated in this list.



CINGJING FARM

Taiwan 07

9D7N Taiwan All-in Deluxe

01 SINGAPORE ▶ TAOYUAN ▶ TAIPEI

Meal on Board

Assemble at the airport and take off to Taoyuan, Taiwan. Upon arrival, transfer to hotel and rest for the day.

Remark: If the flight arrives early in the morning, you will have half day free time at Mitsui Outlet Park.

02 TAIPEI ▶ HUALIEN

Breakfast, Dinner (Eunuch Chicken Cuisine)

After breakfast, travel to Shifen and view the famous waterfall, **Shifen Waterfall** which stands at 20 meters tall. Not to forget, releasing **Sky Lantern** (1 Sky Lantern per 4 pax) at **Shifen Old Street** is a must when you are at Shifen! Up next, walk along the **Jiufen Old Street** and enjoy all the famous street food. Carry on to Hualien enjoying the scenery of Suhua Highway, which built on the side of cliffs above the Pacific Ocean along the way. Stop by at the **Qixingtan Beach**, well known for being one of the most beautiful beaches in Taiwan.

03 HUALIEN ▶ TAITUNG

Breakfast, Lunch (Manbo Sunfish Cuisine), Dinner (Hotel)

This morning, visit the **Taroko National Park**, renowned for its mesmerizing scenery. You may also explore famous sights such as the **Chang Chun Shrine** which is a beautiful temple sitting on top of a natural spring gushing out of the rocks into a waterfall. Next, visit the Lingzhi Tea Centre before proceeding to **Mr. Brown Avenue** for cycling. Enjoy some relaxation at the **Zhiben Hot Spring** in your hotel!

04 TAITUNG ▶ KAOHSIUNG

Breakfast, Lunch (Seafood Cuisine)

Head towards the longest railway bridge in Asia, **Old Iron Bridge**. Next on the list for today is a site for culture and education, the **Buddha Memorial Hall** which consists of traditional and modern elements. Time for some free shopping time at **SKM Park Outlets**! It's a world-class complex Outlets with about 220 stores stationed in it. Then head to **Liuhe Night market**, one of the most famous night markets in Kaohsiung.

05 KAOHSIUNG ▶ NANTOU

Breakfast, Lunch (Taiwanese Cuisine), Dinner (Hotel)

We will visit the well-known **Wen Wu Temple** this morning, a temple built to enshrine and worship Confucius, Guan Gong and Yue Fei. Get on to ride in a cable car for a bird's eye view of the largest lake in Taiwan, **Sun Moon Lake**. Learn about the Taiwanese Indigenous tribes by visiting the indigenous museum, **Formosan Aboriginal Culture Village**, which displays the traditional homes and architect. At the same time you can enjoy the amusement park that has various rides.

06 NANTOU ▶ TAICHUNG

Breakfast, Lunch (Shaoxing Cuisine)

Heading to the **Cingjing Farm**, a great place to enjoy fresh air and interact with the sheep and cows roaming around the **Green Grassland**. With an altitude of 1,700-2,000 meters, and six lookout points, enjoy panoramic view of Cingjing Farm whilst strolling on the **Cingjing Skywalk**. Tonight activity is a visit to the local famous night market, **Fengjia Night Market** upon arriving at Taichung.

07 TAICHUNG ▶ TAIPEI

Breakfast, Lunch (MICHELIN Guide Bib Gourmand Restaurant)

Today, you will have a hands-on experience on learning how to do **Pineapple Tart**. **Huashan 1914 Creative Park** is a city historical site and also an art exhibition and culture activity venue. Next, visit Aboriginal products centre and the **Tianlu Art Centre** to learn about the various type of Tianlu and what is their functionality. Heading to **Chiang Kai-Shek Shilin Residence** which was designated as a national historic monument. End the day with a visit to the **Shilin Night Market**.

08 TAIPEI ▶ TAOYUAN ▶ SINGAPORE

Breakfast, Meal on Board

Enjoy some more leisure time before bidding farewell to Taiwan. Then transfer to the airport for your flight back to Singapore.

09 HOME SWEET HOME

We hope you enjoyed your vacation with EU Holidays and we look forward to seeing you again on your next trip.



TAIPEI 101

Service Fee Guideline:
(Based on 8D7N)

- TWD1,600 per person

Notes:

- The Company reserves the right to alter tour itineraries, sequence of itineraries, travel arrangements and accommodation due to unforeseen changes, weather conditions, prevailing Covid rules and PCR procedure.
- Tour itinerary, hotel details and inclusions are based on English itinerary.
- Tour is conducted in Mandarin unless otherwise stated.
- Minimum group size of 15 passengers required for confirmed departure. Tour leader assigned for groups of 20+ passengers.



| LOCATION | MONTH | FLOWER TYPE |
|-------------------------------------|--|-----------------------------------|
| Chiang Kai-Shek Shilin Residence | Late Nov to mid-Dec Late Feb March | Chrysanthemums Tulips Roses |
| Buddha Memorial | Nov to Mar | Bougainvillea (Paper Flower) |
| Cingjing Farm | Late Jan to mid-Mar | Cherry Blossoms |
| Formosan Aboriginal Culture Village | Feb | Cherry Blossoms |

行程亮点

台北

- 十分瀑布
- 十分老街
- 放天灯体验
- 九份老街
- 华山1914文创园区
- 士林官邸
- 士林夜市
- 凤梨酥DIY体验

花莲

- 七星潭海滩
- 太鲁阁国家公园

台东

- 自行车体验@伯朗大道
- 知本温泉体验

高雄

- 旧铁桥自然生态景观
- 佛陀纪念馆
- 草衙道SKM Park Outlets
- 六合夜市

南投

- 文武庙
- 乘坐缆车@日月潭
- 九族文化村
- 清境农场和天空步道

台中

- 逢甲夜市

9天7晚 台湾全览豪华旅游



伯朗大道

- **九份老街** - 依山而建的复古老街一定要品尝芋圆、肉圆、草仔粿等九份经典小吃。
- **七星潭** - 别忘了在台湾最美的海滩之一留下您美丽的倩影。

- **逢甲夜市** - 全台湾最大且著名的观光夜市，贩卖商品种类玲琅满目。

07 台中 ▸ 台北

- 早餐, 午餐-米其林指南必比登推介餐厅
- **凤梨酥DIY体验** - 手作美味伴手礼
 - **原住民特产中心**
 - **天禄艺术中心**
 - **华山1914文创园区** - 艺术展览、音乐表演等文化活动场地。
 - **士林官邸** - 精致庭园造景设计和景色秀丽，所以成为蒋故总统官邸。
 - **士林夜市** - 台湾美食大集合，有吃又有玩，让我们继续大祭五脏庙吧！

03 花莲 ▸ 台东

- 早餐, 午餐-曼波鱼风味餐, 晚餐-饭店晚餐
- **太鲁阁国家公园** - 以雄伟壮丽、几近垂直的大理岩峡谷景观闻名，众多景点令人目不暇给。
 - **伯朗大道&脚踏车体验** - 倘洋在一望无际又景色优美的田园景色。
 - **知本温泉体验** - 晚上在饭店好好泡泡温泉，褪去一身疲惫。

04 台东 ▸ 高雄

- 早餐, 午餐-海鲜料理
- **旧铁桥自然生态景观** - 旧铁桥的重生结合了古迹与自然生态。
 - **佛陀纪念馆** - 融和传统与现代的建筑。
 - **草衙道SKM Park Outlets** - 进驻超过220个知名品牌,是一座丰富元素的複合式商场。
 - **六合夜市** - 以多样化小吃闻名，特色的木瓜牛奶及盐蒸虾更是您不可错过的好味道。

08 台北 ▸ 桃园 ▸ 新加坡

- 早餐, 机上餐食
- 把握最后一天的悠闲时光。接着前往机场，飞返甜蜜的家园-新加坡。

09 甜蜜的家

- 我们希望您与欧美假期创造了美好的回忆，期待在下次旅行中再次见到您。

赏花攻略

| 景点 | 月份 | 花种 |
|-------|--------------------------|------------------|
| 士林官邸 | 11月下旬到12月中 2月下旬 3月 | 菊花 郁金香 玫瑰花 |
| 佛陀纪念馆 | 11月到3月 | 九重葛 |
| 清境农场 | 1月下旬到3月中 | 樱花 |
| 九族文化村 | 2月 | 樱花 |

01 新加坡 ▸ 桃园 ▸ 台北

- 机上餐食
- 在机场集合，搭机飞往素有宝岛之称的-台湾。抵达后，前往酒店休息。
- 备注：若是班机于早上抵达，您将有半天在林口三井Outlet自由活动的时间。

02 台北 ▸ 花莲

- 早餐, 晚餐-太監鸡养生料理
- **十分瀑布** - 落差高度约20米、宽度约40米，为台湾最大的帘幕式瀑布。
 - **十分老街&放天灯** - 施放难忘的天灯体验，许下您的幸福心愿灯（施放天灯每4人/盏）。

05 高雄 ▸ 南投

- 早餐, 午餐-台式料理, 晚餐-饭店晚餐
- **文武庙** - 这里可以眺望美丽日月潭风光，还有月老庙及许愿池可以祈福。
 - **日月潭&乘坐缆车** - 距地面40公尺，可一览日月潭的米其林三星级酒店湖景。
 - **九族文化村** - 以台湾原住民文化为主题，打造了10个原住民族群的传统房舍文化展示区。

06 南投 ▸ 台中

- 早餐, 午餐-绍兴料理
- **清境农场** - 台湾三大高山农场之一，高度1,750公尺、有“小欧洲”之称。
 - **青青草原** - 是清境农场人气最旺的景点，其中以“羊咩咩脱衣秀”最富盛名。
 - **天空步道** - 漫步在全台海拔最高的空中步道，也是最长的高山天空步道。



放天灯

- 行程费用未包含：
- 导游司机领队小费(8天7晚为标准)**
- 每人新台币1,600元

备注：

1. 行程顺序可能受到不可预测的情况或恶劣天气的情况下，将会更改或以其他景点替代行程，以确保旅程的顺畅。如有异动，恕不另行通知。
2. 在重大节庆活动期间，住宿可能会搬迁，恕不另行通知。
3. 所有显示的图片仅用于说明目的。
4. 确认出发需要至少15名旅客的团体人数，20名以上旅客安排随团领队。
5. 导游全程以中文解说，除非另有说明。
6. 如客户更改行程，航班或中途离团必须附加额外费用。

9D7N *Refreshing* TAIWAN ALISHAN

9天7晚 台湾阿里山森呼吸之旅

TWALIW | Nov 2023 - Mar 2024



SCAN FOR
DIGITAL COPY



**COUNTRY
FOCUSED**

Indulge in what Taiwan has to offer! Ranging from night markets to famous shopping districts, cultural sites to historical places and various type of cuisines, it just has everything you can wish for!

ALISHAN

I WAS
HERE!



Wifi
Router



HIGHLIGHTS

CHANGHUA

- Lukang Old Street
- Lukang Tianhou Temple

TAINAN

- Blueprint Cultural & Creative Park
- Night Market
- Anping Fort
- Anping Tree House
- Chikan Tower
- Ten-Drum Cultural Village + Drumming performance
- Chimei Museum

KAOHSIUNG

- Kaohsiung Port Warehouse No. 2
- The Pier-2 Art Centre

CHIAYI

- Alishan National Park
- Alishan Zhushan Sunrise (subject to weather conditions)
- Fengqihu Historical Streets
- YUYUPAS Cultural Park

TAICHUNG

- Shen Ji New Village
- Fengjia Night Market
- Gaomei Wetland
- Wuqi Fisherman's Wharf

KEELUNG

- Zhengbin Fishing Harbor
- Colourful House
- National Museum of Marine Science and Technology

TAIPEI

- DIY Pineapple tart
- Songshan Cultural and Creative Park
- Taipei 101 Xinyi Shopping Area
- Liberty Square
- Ximending



DELICACIES

Meal Plan

7 Breakfasts, 5 Lunches, 4 Dinners

Specialties

- Chi Kan Cuisine
- Hakka Cuisine
- Shabu Shabu
- Taiwan Traditional Cuisine
- Aboriginal Cuisine
- Taiwan Seafood Cuisine
- Taiwanese Teppanyaki

3-5★ HOTELS

TAOYUAN Tao Garden Hotel

TAINAN Hotel Tainan

KAOHSIUNG Chateau de Chine Kaohsiung

ALISHAN Alishan Shermuh Hotel

TAICHUNG Holiday Inn Express

TAIPEI Caesar Metro Taipei

*Note: Hotels subject to final confirmation. Should there be changes, customers will be offered similar accommodations as stated in this list.



ZHENGBIN FISHING HARBOUR COLOURFUL HOUSE

9D7N Refreshing Taiwan Alishan

01 SINGAPORE ▶ TAOYUAN ▶ TAIPEI

Meal on Board
Assemble at Singapore Changi Airport for your flight to "Formosa Island", Taiwan. Upon arrival, head back to your hotel in Taoyuan for a well-deserved rest. Remark: If the flight arrives early in the morning, you will have half day free time at Mitsui Outlet Park.

02 TAOYUAN ▶ CHANGHUA ▶ TAINAN

Breakfast, Dinner (Chi Kan Cuisine)
As we head to Changhua stop by with a visit to [Lukang Tianhou Temple](#). The temple was named as a third-class historic site in 1985. Take a walk along the [Lukang Old Street](#) which is one of the oldest old street in Taiwan and a well-preserved cultural and historical heritage. Photo stop at [Blueprint Cultural & Creative Park](#) next, which is a 3D blueprint night time art installation with bright lights throwing dazzling white lines on a blue wall. End the day by making a trip to [Tainan Night Market](#).

03 TAINAN ▶ KAOHSIUNG

Breakfast, Lunch (Local Cuisine), Dinner (Hakka Cuisine)
Today, we will stroll while taking photos at [Anping Tree House](#), a warehouse experiencing over a hundred years. Next on today list is the [Chikan Tower](#), the oldest building in Tainan's West Central District, and along with [Anping Fort](#) are two of Tainan's most famous landmarks. Enjoy the drumming performance by [Ten-Drum Cultural Village](#), a special Taiwanese drum music created by fusing the Ten-Drum, which became the first international art village with the theme of drum music in Asia. Finally, head to a popular spot for photo taking at the [Chimei Museum](#).

04 KAOHSIUNG ▶ CHIAYI

Breakfast, Lunch (Shabu Shabu), Dinner (Taiwan Traditional Cuisine)
Start your day with a travel to Kaohsiung, stopping along the way to see [Kaohsiung Port Warehouse No. 2](#) which is the latest hang out spot for the youth! The red-brick [Pier-2 Art Centre](#) in this warehouse district have also now been transformed into a hub for exhibitions, shops, restaurants and concerts. For the highlight of the day, transfer to [Alishan National Park](#). A stunning natural paradise known for its picturesque landscapes and diverse ecosystems.

05 CHIAYI ▶ TAICHUNG

Breakfast, Lunch (Aboriginal Cuisine)
Start the day with the [Alishan Zhushan Sunrise](#), famous for its world class sunrise view over the seas of cloud (subject to weather conditions). Make a short stop at [Fenchihu Historical Streets](#) where you may find some souvenirs and old commodities. Next up is [Yuyupas](#). The name, meaning rich and safe in Tsou language, is an indigenous cultural park about the Tsou Tribe located in Alishan. Visit [Shen Ji New Village](#) which thrives in cultural and creative industry that attracts visitors to the cluster of distinctive shops and studios. End the day with a visit to the [Fengjia Night Market](#).

06 TAICHUNG ▶ TAIPEI

Breakfast, Lunch (Taiwan Seafood Cuisine), Dinner (Taiwanese Teppanyaki)
Journey to [Gaomei Wetland](#) in the morning. With rich wetland ecology and possesses the largest group of *Bolboschoenus planiculmis* in Taiwan. Head to [Wuqi Fisherman's Wharf](#), which has become a popular place for locals to enjoy fresh seafood. A quick stop at an Aboriginal Shop before arriving in Taipei. Visit the

upscale shopping area, [Taipei 101 Xinyi Shopping Area](#) and top by the [Songshan Cultural and Creative Park](#) which was positioned as the "Creative Hub of Taipei" with the objective to nurture creative talents and energy.

07 TAIPEI ▶ KEELUNG ▶ TAIPEI

Breakfast, Lunch (Local Cuisine)
Today you will have a hands-on experience in learning how to make pineapple tarts. Then head to Keelung. Take a walk along [Zhengbin Fishing Harbor Colorful House](#) which is a super popular IG check-in attraction. Observe the [National Museum of Marine Science and Technology](#) which showcase the ecology and revolutionary of marine life, and the relationship between the human beings and the ocean. Make a photo stop at [Liberty Square](#), one of the most notable landmarks in Taipei. Then visit the [Tianlu Art Centre](#) to learn about the various type of Tianlu and what is their functionality. End the day by shopping at the famous [XiMenDing](#).

08 TAIPEI ▶ TAOYUAN ▶ SINGAPORE

Breakfast, Meal on Board
Enjoy some more leisure time before to bidding farewell to Taiwan. Then transfer to the airport for your flight back to Singapore.

09 HOME SWEET HOME

We hope you enjoyed your vacation with EU Holidays and we look forward to seeing you again on your next trip.

Service Fee Guideline: (Based on 8D7N)

- TWD1,600 per person

Notes:

- The Company reserves the right to alter tour itineraries, sequence of itineraries, travel arrangements and accommodation due to unforeseen changes, weather conditions, prevailing Covid rules and PCR procedure.
- Tour itinerary, hotel details and inclusions are based on English itinerary.
- Tour is conducted in Mandarin unless otherwise stated.
- Minimum group size of 15 passengers required for confirmed departure. Tour leader assigned for groups of 20+ passengers.



| LOCATION | MONTH | FLOWER TYPE |
|--------------------------------|-----------------------|---------------------------------------|
| Alishan Forest Recreation Area | Late Feb to early Apr | Cherry Blossoms |
| Chimei Museum | Feb to Mar | Yellow Tabebuia (Golden Trumpet Tree) |
| Liberty Square | Mid-Feb to late Mar | Cherry Blossoms |

9天7晚 台湾阿里山森呼吸之旅

行程亮点

彰化

- 鹿港老街
- 鹿港天后宫

台南

- 蓝晒图文创园区
- 台南夜市
- 安平古堡
- 安平树屋
- 赤崁楼
- 十鼓文化村+观看击鼓表演
- 奇美博物馆

高雄

- 栈貳库
- 驳二艺术特区

嘉义

- 阿里山国家公园
- 祝山线阿里山日出
- 奋起湖老街
- 优游吧斯邹族文化部落

台中

- 审计新村
- 逢甲夜市
- 高美湿地
- 梧栖渔港

基隆

- 正滨渔港彩虹屋
- 海洋科技博物馆

台北

- 凤梨酥DIY体验
- 台北101信义商圈
- 松山文创园区
- 自由广场
- 西门町

03 台南 ▶ 高雄

- 早餐、午餐-台式料理, 晚餐-美浓客家菜
- 安平古堡** - 见证台湾近400年历史的古城, 是荷兰人执政时期所建。
 - 安平树屋** - 墙面满佈榕树盘据气根, 形成特有的屋树共生奇景。
 - 赤崁楼** - 初建于西元1650年, 十分具有历史与文化价值。
 - 十鼓文化村** - 融入十鼓独创的台湾特色鼓乐, 是亚洲第一座鼓乐主题的国际艺术村。
 - 奇美博物馆 (外观留影)** - 建筑以欧洲希腊神话故事为主题, 仿佛置身於欧洲古典宫殿。

04 高雄 ▶ 嘉义

- 早餐、午餐-台式火锅, 晚餐-台式料理
- 栈貳库** - 全台最大活化老仓库, 已有104年历史。港边的白色旋转木马更是不容错过的拍照景点。
 - 驳二艺术特区** - 园区内散佈著大量可爱、设计前卫的大型公仔, 别忘了跟最抢眼的变形金刚留影。
 - 阿里山森林游乐区** - 在古木参天的林荫小径上, 可以吸取芬多精、聆听鸟鸣声。神木、樱花、云海、日出是阿里山名扬四海的四大胜景。

05 嘉义 ▶ 台中

- 早餐、午餐-原住民风味餐
- 祝山站观赏日出** (视天气情况而定) - 祝山站为重要的观日景点, 若无日出亦有机会从观景台一览云海景观。
 - 奋起湖老街** - 这里有名的除了铁路便当还贩售各样怀旧物品及伴手礼。
 - 优游吧斯邹族文化部落** - “优游吧斯”邹族原住民语, 代表富足安康之意。
 - 审计新村** - 集结文创市集、手冲咖啡、特色美食, 吸引了无数的文青网美来此一游。
 - 逢甲夜市** - 全台湾最大且著名的观光夜市, 贩卖商品种类琳琅满目。

06 台中 ▶ 台北

- 早餐、午餐-海鲜风味餐, 晚餐-台式铁板烧料理
- 高美湿地** - 是台湾少数几处雁鸭集体繁殖区之一。曾在高美湿地栖息的鸟类有多达120余种, 为重要之生态保育区。
 - 梧栖渔港** - 是全台最大的鱼货直销中心, 想要买鱼货、吃海鲜、来这里就对了!
 - 山地特产中心**
 - 台北101信义商圈** - 被称为“台北

- 曼哈顿”, 是目前最具指标性的商圈
- 松山文创园区** - 前身为松山菸厂。现在做为一个国际型的文创聚落。

07 台北 ▶ 基隆 ▶ 台北

- 早餐、午餐-台式料理
- 凤梨酥DIY体验** - 手作美味伴手礼
 - 正滨渔港彩虹屋** - 16栋缤纷的彩虹屋, 让渔港生动了起来, 被誉为台版威尼斯。
 - 海洋科技博物馆** - 每个展区有不同的主题, 可以深入了解海洋生物知识和技术。
 - 天禄艺术中心**
 - 自由广场** - 广场两侧矗立着国家大剧院和国家音乐厅两座气势恢宏的宫殿式建筑。
 - 西门町** - 年轻人的潮流之地, 时尚品牌、街头潮流、平价精品, 在这通通都有。

08 台北 ▶ 桃园 ▶ 新加坡

- 早餐、机上餐食
- 把握最后一天的悠闲时光。接着前往机场, 飞返甜蜜的家-新加坡。

09 甜蜜的家

- 我们希望您与欧美假期创造了美好的回忆, 期待在下次旅行中再次见到您。



阿里山祝山日出

行程费用未包含:

导游司机领队小费(8天7晚为标准)

- 每人新台币1,600元

备注:

- 行程顺序可能受到不可预测的情况或恶劣天气的情况下, 将会更改或以其他景点替代行程, 以确保旅程的顺畅。如有异动, 恕不另行通知。
- 在重大节庆活动期间, 住宿可能会搬迁, 恕不另行通知。
- 所有显示的图片仅用于说明目的。
- 确认出发需要至少15名旅客的团体人数, 20名以上旅客安排随团领队。
- 导游全程以中文解说, 除非另有说明。
- 如客户更改行程, 航班或中途离团必须附加额外费用。

01 新加坡 ▶ 桃园

机上餐食

在机场集合, 搭机飞往素有宝岛之称的-台湾。抵达后, 前往桃园酒店休息。
备注: 若是班机于早上抵达, 您将有半天在林口三井Outlet自由活动的时间。

02 桃园 ▶ 彰化 ▶ 台南

早餐、晚餐-赤坎风味料理

- 鹿港老街** - 这里保存着许多传统建筑, 拥有迷人的小巷和充满活力的本地商店。
- 鹿港天后宫** - 又称妈祖庙, 有着悠久的历史 and 精美的建筑, 是鹿港最重要的宗教场所之一。
- 蓝晒图文创园区** - 前身为旧司法宿舍的区域内进化为3D的蓝晒图拍照热区。
- 台南特色夜市** - “大大武花大武花”分别指的是大东、武圣、花园三大夜市的营业时间, 熟记口诀就不会走错夜市啦!

| 赏花攻略 | | |
|---------|-----------|-------|
| 景点 | 月份 | 花种 |
| 阿里山国家公园 | 2月底到4月初 | 樱花 |
| 奇美博物馆 | 2月到3月 | 黄花风铃木 |
| 自由广场 | 2月中旬到3月下旬 | 樱花 |

9D7N TAIWAN HAKKA & TRIBAL EXPERIENCE

9天7晚 台湾客家文化与部落体验之旅

TWHAKW | Nov 2023 - Mar 2024

SCAN FOR
DIGITAL COPY



**COUNTRY
FOCUSED**

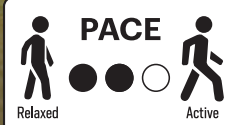
I WAS
HERE!

Indulge in what Taiwan has to offer! Ranging from night markets to famous shopping districts, cultural sites to historical places and various type of cuisines, it just has everything you can wish for!

HAKKA TRADITIONAL FAN



Wifi
Router



\$

HIGHLIGHTS

HSINCHU

- ChengHuang Temple
- Night Market
- Zhudong Market
- Beipu Old Street

MIAOLI

- Lei Cha DIY
- Shengxing Railway Station
- Longteng Bridge
- Tu-Niu Hakka Cultural Museum
- Nanchuang Old Street
- Osmanthus Alley
- Shuibiantou Xishankeng
- Nanchuang Post Office
- Taiwan Mochi DIY

NANTOU

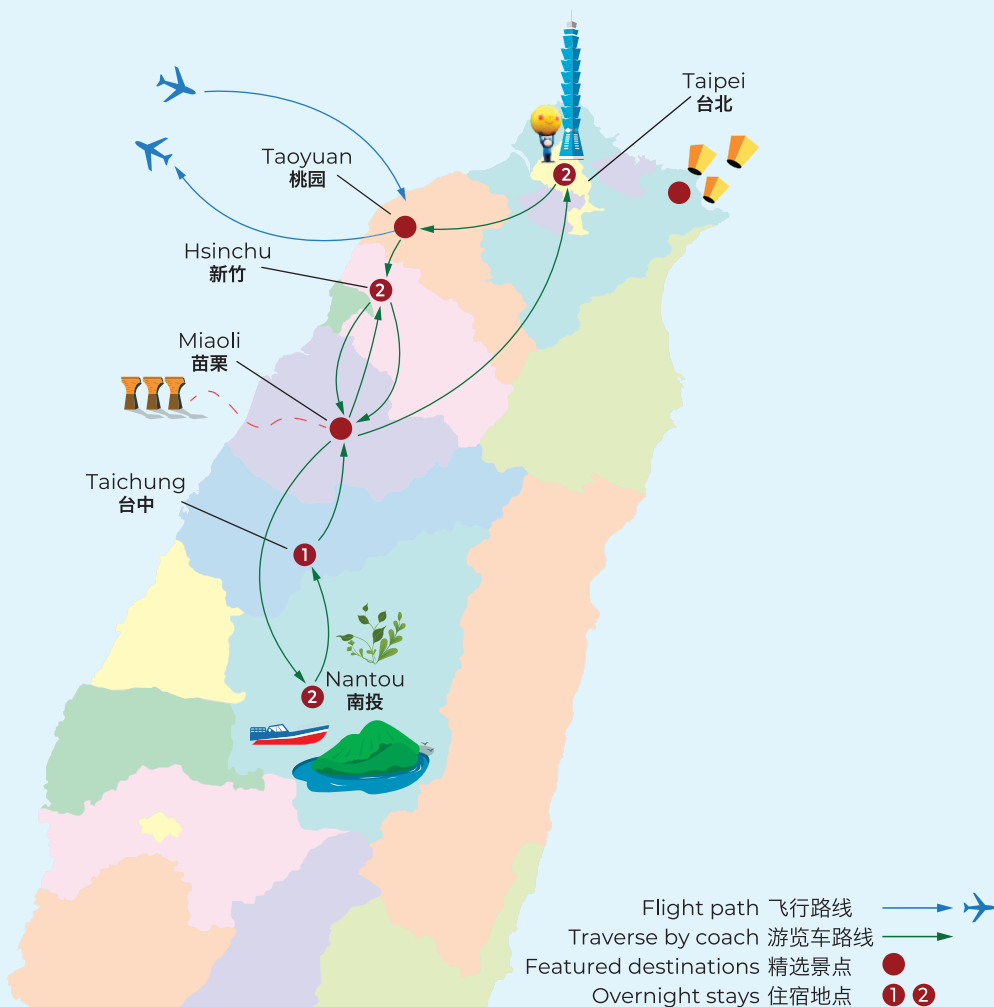
- Sediq Tribe
- Wujie Suspension Bridge
- Stalactite Cliff
- Calocedrus Wood Forest Trail
- Tea Picking
- Ita Thao Market
- Sun Moon Lake (Boat Ride)
- Wenwu Temple

TAICHUNG

- Fengjia Night Market

TAIPEI

- Xinyi Shopping Mall
- Taipei 101
- Jimmy Moon Bus Station
- Rose Garden
- Jiufen
- Shifen Waterfall
- Shifen Railway Old Street
- Release Sky Lantern (1 lantern every 4 pax)
- Ximending



DELICACIES

Meal Plan

7 Breakfasts, 6 Lunches, 3 Dinners

Specialties

- Hakka Cuisine
- Sidek Aboriginal Cuisine
- Taiwanese Tea Cuisine
- Bunun Aboriginal Cuisine

4-5★ HOTELS

HSINCHU Lakeshore Hotel

NANTOU Classic Hotel

TAICHUNG Holiday Inn Express

TAIPEI Caesar Metro Taipei

*Note: Hotels subject to final confirmation. Should there be changes, customers will be offered similar accommodations as stated in this list.

TUNG TREE FLOWER

9D7N Taiwan Hakka & Tribal Experience

01 SINGAPORE ▶ TAOYUAN ▶ HSINCHU

Meal on Board
Assemble at Singapore Changi Airport for your flight to "Formosa Island", Taiwan. Upon arrival, proceed to Hsinchu and explore the renowned **Chenghuang Temple Night Market**, a popular night market also a historical site. Remark: If the flight arrives early in the morning, you will have half day free time at Mitsui Outlet Park.

02 HSINCHU ▶ MIAOLI ▶ HSINCHU

Breakfast, Lunch (Hakka Cuisine), Dinner (Taiwanese Cuisine)
This morning, visit the largest Hakka traditional market, **Zhudong Market** where a wide variety of Hakka traditional snacks can be found at the **Beipu Old Street**. Hands on time next with **Lei Cha DIY** where you get to experience the process of making a traditional tea-based beverage for Hakka people. Head up next to **Shengxing Railway Station**, known as the highest altitude station in the western part of Taiwan. End the day by viewing the **Longteng Bridge**, a masterpiece of Taiwan's railway history.

03 HSINCHU ▶ MIAOLI ▶ SEDIQ TRIBE ▶ NANTOU

Breakfast, Lunch (Sediq Aboriginal Cuisine), Dinner (Taiwanese Tea Cuisine)
Start your day with a **Tu-Niu Hakka Cultural Museum** and get to understand the origin of Hakka culture. Next up, visit the **Sediq Tribe** and you will get to do lots of activities, such as tasting the tribal feasts, tribe tour, experience traditional costumes, tattoo culture, archery and even get to sing and dance with the

04 NANTOU ▶ BUNUN TRIBE ▶ NANTOU

Breakfast, Lunch (Bunun Aboriginal Cuisine), Dinner (Local Cuisine)
On the **Wujie Suspension Bridge**, you will see the bridge tower decorated with patterns of the indigenous Bunun culture. Woah at the **Stalactite Cliff** which was formed by the accumulation of calcium carbonate in water over the years. Escape the hustle and bustle of daily life and seek sanctuary in the **Calocedrus**

05 NANTOU ▶ TAICHUNG

Breakfast, Lunch
After breakfast, it's time to learn how to prepare the **Taiwan Mochi**. Head to Puli next and do some **Tea Picking** before heading to **Ita Thao Market**, where you can find several snacks and souvenir shops! Enjoy a **Ita Thao Traditional Dance Performance** before going on a **boat ride** and cruise on the largest lake in Taiwan, **Sun Moon Lake**. Visit **Wen Wu Temple**, built to enshrine and worship Confucius, Guan Gong and Yue Fei. Make a trip to **Mao's House** before ending the day at **Fengjia Night Market**, famous for their local snacks.

06 TAICHUNG ▶ MIAOLI ▶ TAIPEI

Breakfast, Lunch
Tour a Hakka style area, **Nanchuang Old Street** where you can explore the **Osmanthus Alley**, **Shuibiantou Xishankeng** and its **Post Office**. Proceed back to Taipei and you can start to shop all you want at the **Xinyi Shopping Mall** and not forgetting to visit the **Taipei 101** (observatory deck on own expenses). Don't miss the chance to take some instagrammable photos at the charming **Jimmy Moon Bus Station**.



07 TAIPEI

Breakfast, Lunch
Begin your day with Taipei's first **Rose Garden** with classical garden and tea rose as a theme. Visit Aboriginal product centre and the Tianlu Art Centre to learn about the various type of Tianlu and what is their functionality. Travel to Shifen and view the famous waterfall, **Shifen Waterfall** which stands at 20 meters tall. Not to forget, **releasing Sky Lantern** (1 Sky Lantern per 4 pax) at **Shifen Old Street** is a must when you are at Shifen! Up next, walk along the **Jiufen Old Street** and enjoy all the famous street food Taiwan has to offer. Ending the day at the must go shopping place, **Ximending**!

08 TAIPEI ▶ TAOYUAN ▶ SINGAPORE

Breakfast, Meal on Board
Enjoy some more leisure time before bidding farewell to Taiwan. Then transfer to the airport for your flight back to Singapore.

09 HOME SWEET HOME

We hope you enjoyed your vacation with EU Holidays and we look forward to seeing you again on your next trip.

Service Fee Guideline: (Based on 8D7N)

- TWD1,600 per person

Notes:

- The Company reserves the right to alter tour itineraries, sequence of itineraries, travel arrangements and accommodation due to unforeseen changes, weather conditions, prevailing Covid rules and PCR procedure.
- Tour itinerary, hotel details and inclusions are based on English itinerary.
- Tour is conducted in Mandarin unless otherwise stated.
- Minimum group size of 15 passengers required for confirmed departure. Tour leader assigned for groups of 20+ passengers.





行程亮点

新竹

- 城隍庙夜市
- 竹东市场
- 北埔老街

苗栗

- 擂茶DIY
- 胜兴车站
- 龙腾断桥
- 土牛客家文化馆
- 南庄老街
- 桂花巷
- 洗衫坑
- 南庄百年邮局
- 台湾麻糬DIY

南投

- 赛德克部落
- 布农部落
- 武界情人吊桥
- 千年钟乳石奇观
- 梢楠林步道
- 采茶乐
- 伊达邵逐鹿市集
- 邵族原住民歌舞表演
- 日月潭国家风景区(游船体验)
- 文武庙

台中

- 逢甲夜市

台北

- 台北101信义商圈
- 几米月亮公车
- 玫瑰花园
- 九份老街
- 十分瀑布
- 十分老街
- 放天灯体验(4人1灯)
- 西门町

01 新加坡 ▶ 桃园 ▶ 新竹

机上餐食

新加坡樟宜机场集合，后乘搭豪华客机飞往素有宝岛之称的“台湾”。抵达后前往新竹。

- **城隍庙夜市** - 至今已有超过两百多年的历史，是老饕客们必祭五脏庙的天堂！

备注：若是班机于早上抵达，您将有半天在林口三井Outlet自由活动的时间。

02 新竹 ▶ 苗栗 ▶ 新竹

早餐、午餐-客家料理，晚餐-台式料理

- **竹东市场** - 全台最大的客家传统市集，是当地客家人采买食材与吃美食的地方。
- **北埔老街** - 各种客家传统小吃，充满客家古早味风情的老街。
- **擂茶DIY** - 是客家人的特色茶饮。您可体验制造擂茶的DIY。
- **胜兴车站** - 因位于高海拔地区，被称为西部纵贯铁路海拔最高的车站。
- **龙腾断桥** - 砖红色的桥墩遗迹伫立于绿色的山林之间。



十分瀑布

03 新竹 ▶ 苗栗 ▶ 赛德克部落

▶ 南投

早餐、午餐-赛德克部落风味餐，晚餐-台湾茶肴风味餐

- **苗栗土牛客家文化馆** - 了解客家文化的由来。
- **赛德克部落** - 品尝部落风味料理、部落导览、并体验穿传统服饰与射箭等等活动。

04 南投 ▶ 布农部落 ▶ 南投

早餐、午餐 - 布农部落风味餐，晚餐-当地料理

- **布农部落** - 拥有丰富的农牧资源，来一趟有多元的生态文化之旅。（*需换小车接驳上下山，车程约一小时）
- **武界情人吊桥** - 吊桥正位在中枢地带，跨越源远流长的浊水溪。
- **千年钟乳石奇观** - 在山壁上形成的钟乳石，数百年来依然相当壮观。
- **梢楠林步道** - 漫步在梢楠林步道，享受芬多精。

05 南投 ▶ 台中

早餐、午餐

- **采茶乐** - 体验茶道精神与文化。
- **伊达邵逐鹿市集** - 是邵族人聚居的部落，也称伊达邵老街。
- **邵族原住民歌舞表演** - 由邵族，布农族及泰雅族青年舞者组成。
- **日月潭国家风景区**(赠送游船体验) - 您可踏上游船游览一番，感受日月潭湖光山色之美。
- **文武庙** - 这里可以眺望美丽日月潭风光，还有月老庙及许愿池可以祈福。
- **逢甲夜市** - 全台湾最大且著名的观光夜市。

06 台中 ▶ 苗栗 ▶ 台北

早餐、午餐

- **南庄老街** - 客家人的聚集地，以两层楼的怀旧日式木造建筑为特色。
- **洗衫坑** - 以前居民的洗衣石板地，象征客家妇女勤俭刻苦的传统精神。
- **桂花巷** - 古色古香的传统建筑，随处充满古朴的复古氛围。
- **百年邮局** - 昔由桧木建造而成的日式办公厅舍。
- **台湾麻糬DIY** - 体验麻糬的制作过程。

- **台北101信义商圈** - 是目前最具指标性的商圈。
- **几米月亮公车** - 有着浓浓可爱童趣的装置艺术。

07 台北

早餐、午餐

- **玫瑰花园** - 位于花博新生公园内，提供拍照打卡的美景。
- **原住民特产中心**
- **天禄艺术中心**
- **十分瀑布** - 落差高度约20米、宽度约40米，为台湾最大的帘幕式瀑布。
- **十分老街&放天灯** - 施放难忘的天灯体验，许下您的幸福心愿灯（施放天灯4人/盏）。
- **九份老街** - 依山而建的复古老街，一定要品尝芋圆、肉圆、草仔粿等九份经典小吃。
- **西门町** - 年轻人的潮流之地，好逛又好买。

08 台北 ▶ 桃园 ▶ 新加坡

早餐、机上餐食

把握最后一天的悠闲时光。接着前往机场，飞返甜蜜的家-新加坡。

09 甜蜜的家

我们希望您与欧美假期创造了美好的回忆，期待在下次旅行中再次见到您。

行程费用未包含：

导游司机领队小费(8天7晚为标准)

· 每人新台币1,600元

备注：

1. 行程顺序可能受到不可预测的情况或恶劣天气的情况下，将会更改或以其他景点替代行程，以确保旅程的顺畅。如有异动，恕不另行通知。
2. 在重大节庆活动期间，住宿可能会搬迁，恕不另行通知。
3. 所有显示的图片仅用于说明目的。
4. 确认出发需要至少15名旅客的团体人数，20名以上旅客安排随团领队。
5. 导游全程以中文解说，除非另有说明。
6. 如客户更改行程，航班或中途离团必须附加额外费用。

7D5N

TAIWAN FAMILY FUN

+ LEOFOO VILLAGE

7天5晚 台湾主题乐园亲子游

TWFFPW | Nov 2023 to Apr 2024

**COUNTRY
FOCUSED**

I WAS
HERE!

Indulge in what Taiwan has to offer! Ranging from night markets to famous shopping districts, cultural sites to historical places and various type of cuisines, it just has everything you can wish for!

SCAN FOR
DIGITAL COPY



LEOFOO VILLAGE



Wifi
Router



PACE



HIGHLIGHTS

TAIPEI

- Ximending
- Taipei Zoo

MIAOLI

- Jiushan Train Ride
- Longteng Broken Bridge
- Flying Cow Ranch – feed animals & DIY
- Experience Tomato Picking

TAICHUNG

- Gaomei Wetland
- Fengjia Night Market
- Zhongshe Flower Garden

NANTOU

- Cona's Choco Castle
- Sun Moon Lake Cruise
- 921 Earthquake Museum

HSINCHU

- Leofoo Village Theme Park



DELICACIES

Meal Plan

5 Breakfasts, 4 Lunches, 1 Dinners

Specialties

- Hakka Cuisine
- Aboriginal Cuisine
- Taiwanese Cuisine
- Michelin Bib Gournand Reataurant

3-5★ HOTELS

TAICHUNG Holiday Inn Express

MIAOLI Flying Cow Ranch

HSINCHU Leofoo Resort Guanshi

TAIPEI Caesar Metro Hotel Taipei

*Note: Hotels subject to final confirmation. Should there be changes, customers will be offered similar accommodations as stated in this list.



SUN MOON LAKE

Taiwan 19

7D5N Taiwan Family Fun + Leofoo Village

01 SINGAPORE ▶ TAOYUAN

Meal on Board

Assemble at Singapore Changi Airport for your flight to "Formosa Island", Taiwan.

02 TAOYUAN ▶ MIAOLI ▶ TAICHUNG

Lunch (Hakka Cuisine)

Upon arriving in Taiwan, you'll be greeted by a guide and transferred to Miaoli. Experience a one-way **Jiushan train line ride** from Shengxing Station to Longteng Broken Bridge. Next, head to **Gaomei Wetland**, a popular spot for bird watching during fall and winter season. Tonight activity is a visit to the local famous night market, **Fengjia Night Market**

03 TAICHUNG ▶ NANTOU ▶ TAICHUNG

Breakfast, Breakfast, Lunch (Aboriginal Cuisine)

Get onto a boat and cruise around the largest lake in Taiwan, **Sun Moon Lake**. Then head to **921 Earthquake Museum** and learn about the site where the school collapsed during the earthquake. Further down south. We will visit the **Cona's Choco Castle**.

Through facilities such as the projection mapping show and shadow interactive knowledge wall, the entertaining and educational design can be embodied. Next, head to Taichung brand new **Mitsui Shopping Park LaLaport**, enjoy your shopping time.

04 TAICHUNG ▶ MIAOLI

Breakfast, Lunch (Taiwanese Cuisine), Dinner (Farm Cuisine)

After breakfast, you can view the flower beds that are covered with various bright colours at **Zhongshe Flower Garden** before checking into the **Flying Cow Ranch** where you can get to interact with the animals in the farm. You can enjoy a range of activities, including feeding and milking cows, horseback riding, sheep shearing, and even participating in DIY workshops.

05 MIAOLI ▶ HSINCHU

Breakfast

Experience **Tomato picking**. Continue the tour, you will be in



CONA'S CHOCO CASTLE

for a fun and exciting day after reaching the **Leofoo Village Theme Park**. Being Taiwan's largest theme park, the area is divided into 5 zones, you can enjoy the rides and explore what the theme park has to offer!

06 HSINCHU ▶ TAIPEI

Breakfast, Lunch (Michelin Bib Gournand Restaurant)

Today's journey begins at **Taipei Zoo**, to connect you with nature, explore diverse animal species, and gain awareness about animal conservation efforts. Next, head to the **Tianlu Art Centre** to learn about the various type of Tianlu and what is their functionality and learn about the Aboriginal specialties' local products at the shop. Tonight, grab the last chance to shop at the famous shopping area,

07 TAIPEI ▶ TAOYUAN ▶ SINGAPORE

Breakfast, Meal on Board

Enjoy some more leisure time before we transfer to airport for your flight home. We hope you had enjoyed your vacation with EU Holidays and we look forward seeing you again on your next trip!



TOMATO PICKING

Service Fee Guideline:
(Based on 6D5N)

- TWD1,200 per person

Notes:

- The Company reserves the right to alter tour itineraries, sequence of itineraries, travel arrangements and accommodation due to unforeseen changes, weather conditions, prevailing Covid rules and PCR procedure.
- Tour itinerary, hotel details and inclusions are based on English itinerary.
- Tour is conducted in Mandarin unless otherwise stated.
- Minimum group size of 15 passengers required for confirmed departure. Tour leader assigned for groups of 20+ passengers.

7天5晚 台湾主题乐园亲子游

行程亮点

台北

- 西门町
- 木栅动物园

苗栗

- 铁道小火车体验
- 龙腾断桥
- 飞牛牧场—喂食动物和挤牛奶体验
- 采番茄体验

台中

- 高美湿地
- 逢甲夜市
- 中社花海

南投

- 妮娜巧克力梦想城堡
- 日月潭游船
- 921地震博物馆

新竹

- 六福村主题公园

高美湿地

01 新加坡 ▶ 桃园

机上用餐

在新加坡樟宜机场集合，搭机飞往素有宝岛之称的-台湾。

02 新加坡 ▶ 桃园 ▶ 苗栗 ▶ 台中

早餐、午餐-客家料理

抵达台湾后，将由导游迎接前往苗栗。

- **胜兴车站** - 极具客家山城之美，1999年公告为县定古迹，保留这深富历史的铁道文化与文物。
- **旧山线铁道小火车** - 是采用人力结合电力运作，依电力前进亦可脚踏自行车，欣赏铁路沿线美丽景色龙腾断桥-极具历史价值，桥长约200公尺。桥高有50公尺，是山线铁路中最高的一座桥。
- **高美湿地** - 拥有丰富的生态及景观资源，别忘了跟夕阳及巨大的风车留下您美丽的情影。
- **逢甲夜市** - 全台湾最大且著名的观光夜市，贩卖商品种类琳琅满目。

03 台中 ▶ 南投 ▶ 台中

早餐、午餐-原住民风味料理

- **日月潭游船体验** - 一览湖畔风光，还可深入了解日月潭周边的地理景点与历史
- **地震教育博物馆** - 全球难得一见的自然科学活教材，它完整地保存了1999年9月21日凌晨1点47分，芮氏规模7.3的强烈地震后所造成的断层错动、校舍倒塌、河床隆起等地震遗址。
- **妮娜巧克力梦想城堡** - 仿中古世纪洛可可的华丽设计，并透过光雕秀、光影互动知识墙等设施传递可可的知识，体现寓教于乐的精神。
- **Mitsui Shopping Park LaLaport** - 在台中崭新的一站式购物中心尽情买买买。



04 台中 ▶ 苗栗

早餐、午餐-台式料理，晚餐-农场料理

- **中社花海** - 占地六公顷的园区内栽植各种四季花卉、盆栽区，更有小朋友专属的游乐场。
- **飞牛牧场** - 有低矮的房舍和成群的乳牛，体验挤牛奶和喂食小绵羊，兔宝宝等乐趣。

05 苗栗 ▶ 新竹

早餐

- **采番茄体验**
- **六福村主题游乐园** - 为一复合式主题游乐园，由“美国大西部”、“南太平洋”、“阿拉伯皇宫”以及“非洲部落”等四大异国主题村所构成，还有适合亲子同游的野生动物园。

06 新竹 ▶ 台北

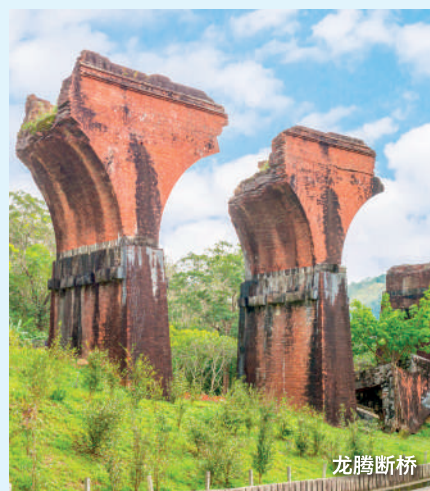
早餐、午餐-米其林推荐餐厅

- **木栅动物园** - 多样的动物、自然环境模拟和互动体验，让你亲近自然、了解动物保护。
- **山地特产中心 & 天禄艺术中心**
- **西门町** - 年轻人的潮流之地。逛完商圈可顺游西门红楼、西本愿寺、北门……等著名的古蹟景点。

07 台北 ▶ 桃园 ▶ 新加坡

早餐、机上餐食

把握最后一天的悠闲时光。接着前往机场，飞返甜蜜的家园-新加坡。我们希望您与欧美假期创造了美好的回忆，期待在下次旅行中再次见到您！



龙腾断桥

行程费用未包含：

导游司机领队小费(6天5晚为标准)

· 每人新台币1,200元

备注：

1. 行程顺序可能受到不可预测的情况或恶劣天气的情况下，将会更改或以其他景点替代行程，以确保旅程的顺畅。如有异动，恕不另行通知。
2. 在重大节庆活动期间，住宿可能会搬迁，恕不另行通知。
3. 所有显示的图片仅用于说明目的。
4. 确认出发需要至少15名旅客的团体人数，20名以上旅客安排随团领队。
5. 导游全程以中文解说，除非另有说明。
6. 如客户更改行程，航班或中途离团必须附加额外费用。

7D5N

TAIWAN

Delights

TWTPEW | Nov 2023 - Mar 2024

7天5晚 台湾溪部之旅 -入住露营车体验

SCAN FOR
DIGITAL COPY



**COUNTRY
FOCUSED**

I WAS
HERE!

Indulge in what Taiwan has to offer! Ranging from night markets to famous shopping districts, cultural sites to historical places and various type of cuisines, it just has everything you can wish for!

XITOU FOREST RECREATION AREA



Wifi
Router



Relaxed

PACE



Active

HIGHLIGHTS

HSINCHU

- Zhudong Hakka Traditional Market
- Beipu Old Street
- DIY – Lei Cha

NANTOU

- Xitou Forest Recreation Area
- Haodai Village
- Stay 1 night in a camper style accommodation

CHANGHUA

- Loofah Factory + DIY Mask

TAICHUNG

- Fruit Picking
- Fengjia Night Market

TAIPEI

- XiMenDing
- Taipei 101 Xinyi Shopping Area
- Jimmy Moon Bus Station
- Si Si Nan Village



DELICACIES

Meal Plan

6 Breakfasts, 4 Lunches, 1 Dinner

Specialties

- Hakka Cuisine
- Traditional Taiwanese Cuisine
- Braised Pork Rice
- Xiao Long Bao Cuisine

4-5★ HOTELS

NANTOU Haodai Village
 (Camper Van Style)

TAICHUNG Holiday Inn Express
 Taichung Park

TAIPEI Caesar Metro Taipei

*Note: Hotels subject to final confirmation.
 Should there be changes, customers will
 be offered similar accommodations as
 stated in this list.



LEI CHA

Taiwan 23

7D5N Taiwan Delights

01 SINGAPORE ▶ TAOYUAN

Meal on board
Assemble at Singapore Changi Airport for your flight to "Formosa Island", Taiwan.

02 TAOYUAN ▶ HSINCHU ▶ NANTOU

Breakfast, Lunch (Hakka Cuisine), Dinner
Upon arriving in Taiwan, you'll be greeted by a guide and transferred to Hsinchu. Explore the largest Hakka traditional market in Taiwan, **Zhudong Hakka Traditional Market** which offers not just nice food but also good bargains for a chance of getting some "trophy" for remembrance. Visit of the **Beipu Old Street** is also a must when you are at Hsinchu as this market has lots of traditional food and you will get a chance to **DIY** the famous **Lei Cha**. Spend a night in **Haodai Village** with a chance to stay in a unique accommodation that comes in a camper van style (seasonal: Fireflies watching, March to

03 NANTOU ▶ CHANGHUA ▶ TAICHUNG

Breakfast, Lunch (Traditional Taiwanese Cuisine)
Breathe in the refreshing nature's smell when visiting **Xitou Forest Recreation Area** this morning and spot for the woody plants and herbaceous plants around you. If you are up for some adventure, you may also try their river tracking or even tree climbing (on own expenses). Up



JIMMY MOON BUS STATION

next, visit the **Loofah Factory** where you will learn how to **make your own face mask!** Tonight activity is a visit to the local famous night market, **Fengjia Night Market** upon arriving at Taichung.

04 TAICHUNG ▶ TAIPEI

Breakfast, Lunch (Braised Pork Rice)
This morning you will get to experience **fruit picking** (Kumquat). A quickstop at an **Aboriginal Shop** before heading to Taipei. Upon arriving at Taipei, start shopping at the famous shopping area, **XiMenDing**.

05 TAIPEI

Breakfast, Lunch (Xiao Long Bao Cuisine)
This morning let's head to the **Tianlu Art Centre** to learn about the various type of Tianlu and what is their functionality. Known as the Manhattan of Taipei, visit the upscale shopping area, **Taipei**

101 Xinyi Shopping Area and head over to **Jimmy Moon Bus Station** to take some instagrammable photos. Walk along the **Si Si Nan Village** -The village got its name because it was dwelled by the workers of Military Factory #44 and their families. As time goes by, the site is adapted into a cultural and educational zone.

06 TAIPEI

Breakfast
Today, free at leisure to explore what Taipei has to offer!

07 TAIPEI ▶ TAOYUAN ▶ SINGAPORE

Breakfast, Meal on Board
Enjoy some more leisure time before we transfer to airport for your flight home. We hope you had enjoyed your vacation with EU Holidays and we look forward seeing you again on your next trip!



Service Fee Guideline: (Based on 6D5N)

- TWD1,200 per person

Notes:

- The Company reserves the right to alter tour itineraries, sequence of itineraries, travel arrangements and accommodation due to unforeseen changes, weather conditions, prevailing Covid rules and PCR procedure.
- Tour itinerary, hotel details and inclusions are based on English itinerary.
- Tour is conducted in Mandarin unless otherwise stated.
- Minimum group size of 15 passengers required for confirmed departure. Tour leader assigned for groups of 20+ passengers.

行程亮点

新竹

- 竹东客家传统市场
- 北埔老街
- DIY - 擂茶

南投

- 溪头森林游乐区
- 溪部好呆庄
- 入住1晚露营车体验

彰化

- 丝瓜水工厂+DIY面膜

台中

- 采摘水果DIY
- 逢甲夜市

台北

- 西门町
- 台北101信义商圈
- 几米月亮公车
- 四四南村

7天5晚 台湾溪部之旅 -入住露营车体验



溪部好呆庄

03 南投 ▶ 彰化 ▶ 台中

早餐, 午餐-台式传统料理

- **溪头森林游乐区** - 园区内约有木本植物300种、草本植物1,300种, 鸟类就约有70种, 漫步在园区内吸收负离子芬多精, 也带来一种心灵的洗涤。
- **丝瓜水工厂+DIY面膜** - 参观台湾保养品界国民品牌“广源良”丝瓜水工厂, 并体验DIY面膜。
- **逢甲夜市** - 全台湾最大且著名的观光夜市, 贩卖商品种类琳琅满目。

06 台北

早餐

享受一整天自由悠闲的时光, 跟随自己的脚步恣意漫游。

07 台北 ▶ 桃园 ▶ 新加坡

早餐, 机上餐食

把握最后一天的悠闲时光。接着前往机场, 飞返甜蜜的家园-新加坡。我们希望您与欧美假期创造了美好的回忆, 期待在下次旅行中再次见到您!

01 新加坡 ▶ 桃园

机上餐食

在新加坡樟宜机场集合, 搭机飞往素有宝岛之称的-台湾。

02 桃园 ▶ 新竹 ▶ 南投

早餐, 午餐-客家料理, 晚餐

抵达台湾后, 将由导游迎接前往新竹。

- **竹东客家传统市场** - 是目前台湾规模最大的客家市集, 跟着在地人逛巴刹, 还能品尝到好吃道地的客家美食
- **北埔老街 + DIY-擂茶** - 老街販售不少小吃野薑花肉粽、麻糬、草仔粿。擂茶是客家人招待贵宾的茶点, 先将芝麻、花生等多种原料在陶碗中研磨成粉到“出油”的状态之后, 再加入热水冲泡即可饮用。
- **溪部好呆庄** - 风格以西部结合溪部为主轴, 设有露天电影院区、放电草皮区等。
- **入住1晚露营车** - 露营初学者也可以轻松体验, 尽情享受和大自然合为一体的奇妙滋味。

04 台中 ▶ 台北

早餐, 午餐-丸林卤肉饭

- **采摘水果** - 来到乡村果园, 听着果园主人解说并体验采摘四季金桔。
- **原住民特产中心**
- **西门町** - 年轻人的潮流之地。逛完商圈可顺游西门红楼、西本愿寺、北门……等著名的古迹景点。

05 台北

早餐, 午餐-小笼包风味餐

- **天禄艺术中心**
- **台北101信义商圈** - 被称为“台北曼哈顿”, 是目前最具指标性的商圈。
- **几米月亮公车** - 位于台北101附近, 有着浓浓可爱童趣的装置艺术。
- **四四南村** - 早年为眷村现拆除改建为文教特区, 让人得以穿梭在小径里, 遥想过去的眷村时光。



“广源良”丝瓜水工厂

行程费用未包含:

导游司机领队小费(6天5晚为标准)

· 每人新台币1,200元

备注:

1. 行程顺序可能受到不可预测的情况或恶劣天气的情况下, 将会更改或以其他景点替代行程, 以确保旅程的顺畅。如有异动, 恕不另行通知。
2. 在重大节庆活动期间, 住宿可能会搬迁, 恕不另行通知。
3. 所有显示的图片仅用于说明目的。
4. 确认出发需要至少15名旅客的团体人数, 20名以上旅客安排随团领队。
5. 导游全程以中文解说, 除非另有说明。
6. 如客户更改行程, 航班或中途离团必须附加额外费用。



四四南村

8D7N
TAIWAN
Wuling Cycling Tour

8天7晚
台湾单车旅行-西进武岭

TWCYWW | Jul 2023 to Mar 2024

SCAN FOR
DIGITAL COPY



CYCLING ON THE ROAD



Wifi
Router



PACE



Difficult

HIGHLIGHTS

HSINCHU

- ChengHuang Temple
- Night Market

TAICHUNG

- Gaomei Wetland
- Fengjia Night Market

NANTOU

- Sun Moon Lake
- Qingjing Farm
- Wuling

TAIPEI

- Jiufen Old Street
- Miaokou Night Market

Notes:

- A minimum group size of 6 passengers is required for a confirmed departure.
- A lead rider will be provided from the 2nd to the 4th day.
- This itinerary is classified as an advanced challenge level. Proficient cycling experience and personal bicycles are required.



Flight path 飞行路线

Cycling Path 骑行路线

Traverse by coach 游览车路线

Featured destinations 精选景点

Overnight stays 住宿地点

3-4★ HOTELS

HSINCHU The Carlton Hotel Hsinchu

TAICHUNG Champs Elyses Hotel Puli
Ease Hotel

QINGJING Unyue Air Garden Resort

TAIPEI UINN Business Hotel

*Note: Hotels subject to final confirmation. Should there be changes, customers will be offered similar accommodations as stated in this list.

DELICACIES

Meal Plan

7 Breakfasts, 1 Dinners



SUN MOON LAKE

Taiwan 27

8D7N Taiwan Wuling Cycling Tour

01 SINGAPORE ▶ TAIPEI ▶ HSINCHU

- Breakfast
- Arrive in Taipei and transfer to [Hsinchu](#).
- Set up your bike and store the bike box for the duration of your trip.
- Take some time to explore Hsinchu and get acclimated to your surroundings.

02 HSINCHU ▶ TAICHUNG

- Breakfast
- Start your cycling journey from Hsinchu and ride south towards [Taichung](#). (Distance 85km / Elevation 100m)
 - Enjoy the scenic views along the way and make stops at interesting landmarks or attractions.
 - Arrive in Taichung and spend the night there.

03 TAICHUNG ▶ SUN MOON LAKE ▶ PULI

- Breakfast
- Transfer to [Sun Moon Lake](#), a beautiful lake located in the mountains.
 - Start cycling around the lake and take in the stunning scenery. (Distance 35km / Elevation 200m)
 - Continue riding to [Puli](#), a small town known for its tea production and charming atmosphere.
 - Spend the night in Puli.

04 PULI ▶ WULING ▶ QINGJING

- Breakfast, Dinner
- Begin your ride from Puli and head towards [Wuling](#).
 - This route will take you to higher elevations and offer breathtaking mountain views. (Distance 55km / Elevation 2800m)
 - Reach Wuling, the highest point accessible by road in Taiwan.
 - Descend from Wuling and continue to [Qingjing](#), a mountainous area famous for its cool climate and beautiful landscapes.
 - Overnight in Qingjing.

05 QINGJING ▶ TAIPEI

- Breakfast
- Transfer back to [Taipei](#) from Qingjing.
 - Take some time to rest and explore Taipei in the evening.
 - You may want to visit popular attractions such as Taipei 101, National Palace Museum, or the night markets.

06 TAIPEI

- Breakfast
- You may spend the day cycling by yourself in [Yangmingshan National Park](#).
- A. Route - FongGueiZuei (Distance 23 km / Elevation Gain 950m.)
- B. Route - Lengshuikeng (Distance 18 km / Elevation Gain 800m.)



- Known for its volcanic landscapes, hot springs, and hiking trails, Yangmingshan offers a refreshing and scenic experience.
- Enjoy the natural beauty and fresh air as you explore the park on your bike.

07 TAIPEI

- Breakfast
- Enjoy a free day in [Taipei](#) to relax or explore more of the city.
 - You can visit other attractions you may have missed earlier, go shopping, or indulge in the local cuisine.
 - Taipei offers a wide range of options for entertainment, shopping, and dining, so take advantage of this day to immerse yourself in the city's vibrant atmosphere.

08 TAIPEI ▶ SINGAPORE

- Breakfast
- Depart from Taipei and return to Singapore, concluding your cycling adventure in Taiwan.
 - We hope you had enjoyed your vacation with EU Holidays and we look forward seeing you again on your next trip!



行程亮点

新竹

- 城隍庙夜市
- 竹东夜市

台中

- 高美湿地
- 逢甲夜市

南投

- 日月潭
- 清境农场
- 武岭

台北

- 九份老街
- 基隆庙口

备注:

1. 确认出发需要至少6名旅客的团体人数。
2. 行程第二天到第四天，会安排1位随团领骑。
3. 此行程属于进阶挑战等级，须具备专业骑乘经验并自备脚踏车。

8天7晚 台湾单车旅行-西进武岭

九份山城

01 新加坡 ▶ 台北 ▶ 新竹

- 抵达桃园机场后，前往新竹。
- 在新竹酒店安顿好行李后，您可以前往**城隍庙夜市**，品味当地的小吃和文化氛围。
- 晚上返回新竹酒店休息。

02 新竹 ▶ 台中

- 从新竹酒店出发，骑单车沿着西滨公路前往高美湿地。（距离85公里 / 海拔100公尺）
- 在**高美湿地**欣赏美丽的自然风景，然后返回酒店休息。
- 晚上搭车前往**逢甲夜市**，在这里您可以享受美食和购物的乐趣。
- 最后返回台中饭店休息。

03 台中 ▶ 日月潭 ▶ 埔里

- 早上从台中饭店出发前往**日月潭**。
- 在日月潭骑单车环湖一圈，欣赏湖光山色。（距离35公里 / 海拔高200公尺）
- 骑单车继续前往埔里，您可以在埔里酒店休息。

04 埔里 ▶ 武岭 ▶ 清境

早餐, 晚餐

- 从埔里酒店出发，骑单车前往**清境农场**。
- 继续骑单车到达**武岭**，这是一个海拔较高的地区。（距离55公里 / 爬升约2800公尺）
- 骑单车返回清境酒店，您可以在那里休息一晚。

05 清境 ▶ 台北

早餐

- 清晨您可以选择自费前往**清境农场**，欣赏美丽的花卉和绵羊秀。
- 从清境民宿返回台北。
- 在台北，前往**九份老街**，体验怀旧风情和品嚐当地特色小吃。
- 接着前往**基隆庙口**，品味当地的夜市美食。
- 最后返回台北酒店休息。

06 自由活动

早餐

- 这一天您可以自行骑车前往**阳明山**，探索阳明山国家公园内的单车路线。
- 阳明山以其美丽的自然景观和温泉而闻名，您可以在这里享受骑行的乐趣。
- **路线A: 风中剑**（距离23公里 / 总爬升约950公尺 / 海拔高约600公尺）
- **路线B: 平等里+冷水坑**（距离18公里 / 总爬升约800公尺 / 海拔高800公尺）

07 自由活动

早餐

- 这一天您可以自由安排活动，根据个人喜好探索台北市内的景点、购物区或美食体验。

08 自由活动 ▶ 送机

早餐

- 这一天您可以再次自由活动，最后根据航班时间前往桃园机场，完成整个台湾单车之旅，返回新加坡。



Cycling through Majestic Cycling Trails

Tips for Cycling to Wuling

Cars are too fast, walking is too slow, only cycling can fully capture the beauty of the scenery.

Wuling, with an altitude of approximately 3,275 meters, is not only the highest point on Taiwan's highways but also the highest point on Southeast Asia's roads. On the eastern side of Wuling, there is a well-positioned observation deck, offering a panoramic view of the mountains, clouds, and starry nights. During the winter, occasional snowfall attracts many snow enthusiasts.

With such breathtaking and ever-changing natural landscapes, conquering Wuling by bike has become a dream for many cyclists. As you drive along the 14A Highway, you will witness numerous cyclists sweating profusely, relying on their endurance and determination to pedal slowly but steadily, and experiencing a great sense of accomplishment when they see the elevation marker at 3,275 meters. This dream is now within reach, and bicycle touring belongs to you.

Don't wait any longer, let's embark on this journey together!

坐车太快、步行太慢、唯有骑单车更能将美景尽收眼廉。

武岭，海拔约3275m，是台湾公路最高点，更是东南亚公路的最高点。武岭的东边有一座视野良好的观景台，是登高望远、观云、眺望山林及夜间观星的好地方，冬季时偶会降雪，常吸引大批赏雪民众。

如此美不胜收、四季分明的自然景观，骑单车攻顶俨然成为众车友追求的梦想，每每开车途经14甲线，看着许多车友挥汗如雨，靠着耐力与毅力一步一脚踩着踏板缓缓而上，当看见标高3275牌楼的成就感，我想应该只有挑战者最有感。

现在这个梦想将不再遥不可及，单车旅游更属于你。别再等了让我们一起出发吧！

To conquer Wuling, you need both basic physical fitness and exceptional endurance. Here are a few tips to make your challenge easier and more

1 Upgrade to a Compression Plate with a Larger Flywheel Glycogen is the main source of energy during exercise, and its depletion rate is slower. Constant heavy pedaling can easily exhaust your muscles. It is recommended to use a larger flywheel paired with a compression plate to create lighter gear ratios. High cadence climbing is more suitable for tackling the formidable Wuling.

2 Maintain a Stable Riding Rhythm Endurance is crucial for the Wuling challenge, and maintaining a stable riding rhythm is even more important. Inconsistent speeds will deplete your energy faster. You can attach a pacing chart to your handlebars and ride at a consistent speed. Additionally, use a heart rate monitor to control your intensity. Ensure you get enough rest before the ride, as having sufficient energy is essential to tackle the arduous Wuling.

3 Timely Refueling Facing a high duration, high intensity, and high difficulty challenge, timely refueling is relatively important. If you start feeling hungry or thirsty during the ride, it may already be too late. It is recommended to refuel every 20 to 30 minutes while climbing Wuling. Apart from energy gels, don't forget solid food such as energy bars and bananas. Electrolyte water is also a good companion to prevent cramps.

4 Gear Up Adopt a layering clothing approach, as the weather in the high mountains can fluctuate significantly. Wear a snug, moisture-wicking base layer along with professional cycling jerseys and shorts. Don't forget to keep your head and hands warm. If you are sensitive to the cold, bring a thermal vest along.

By following these tips, you'll have a more enjoyable and successful cycling experience to conquer Wuling. So, gear up and let the adventure begin!



骑着单车西进武岭

西进武岭小建议

想完骑西进武岭，基本体能、过人耐力缺一不可，以下几个小建议可以让挑战者更省力，更得心应手。

1 改装压缩盘加大飞轮 - 肝糖是运动的主要能量来源，肝糖消耗的速度会比较慢，若不停重踩，肌力更容易消耗殆尽。建议大飞轮搭配压缩盘会令齿比更轻，高回转爬坡比起重踩，更适合应付武岭级大山。

2 稳定节奏骑乘 - 挑战武岭最耐力很重要，而稳定的节奏更重要，若速度忽快忽慢体力也会消耗更快。可以在龙头贴上配速表，骑乘搭配定速度骑行。另外使用心率计来控制自己的强度，赛前好好补眠，有充足精神才有体力应付艰难的武岭。

3 定时补给 - 面对高时数、高强度、高难度的挑战，定时补给相对重要，当你在骑乘中已经感到饿了、渴了再进行补给，恐怕已为时已晚。在爬武岭的途中，建议二十至三十分钟补给一次。除了吃果胶，固体食物也别忘，能量棒加香蕉，搭配电解水，都是防止抽筋的好伙伴。

4 装备 - 尽量采取洋葱式穿法，高山天气起伏较大，一件贴身排汗内衣搭配专业车衣裤，头部及手部也别忘了保暖，怕冷的车友也别忘了带件防寒背心。

台灣 TAIWAN

Flexi Holidays
Daily Departure

**BOOK YOUR FLEXI HOLIDAYS & CUSTOMISE
YOUR DREAM VACATION WITH EU HOLIDAYS!**

4D3N Explore Taipei Free & Easy

- 3N stay 4★ Hotel with Breakfast
- Return Airport Transfers
- FREE half day car disposal*



Seat in Coach

- Return Airport Transfers
- Hotels stay
- Meals as state per itinerary



7D6N Discover Western Taiwan

Touring to Taipei ~ Yilan ~ Taichung ~ Kaohsiung
~ Sun Moon Lake ~ CingJing ~ Nantou ~ Miaoli

7D6N Taiwan Highlight Round Island

Touring to Taipei ~ Hualien ~ Taroko National Park
~ Taitung ~ Pingtung ~ Kaohsiung ~ Taichung ~ Miaoli



Private Tour

- Travel your way! Mini tour private car hire
- 9 seaters vehicle
- Return Airport Transfers
- Hotel stay with daily breakfast

6D5N Taiwan Eastern + Taroko National Park

Taipei, Hualien, Yilan, Taroko National Park

6D5N Taiwan Mid-Southern + QingJing

Nantou, Tainan, Taichung, Taipei

6D5N Taiwan Mid-Southern + Miaoli Flower Home

Taichung, Kaohsiung, Miaoli, Taipei

- Hotel stay
- Meals as state per itinerary
- Pineapple Tart DIY / 2 Days E-Biking Experience

6D5N Taiwan's Indigenous Tribes + Shei-pa Leisure Farm

Touring to Taipei ~ Hsinzhu ~
Shei-pa National Park ~ Taichung ~ Miaoli

6D5N Liho! Taiwan Cycling Odyssey

Touring to Taipei ~ Keelung ~ JinShan
~ Taichung ~ Zhanghua ~ Miaoli



SCAN FOR
DIGITAL COPY



TERMS & CONDITIONS

Tour Booking Terms & Conditions

You and your travelling companions are deemed to have read, understood and accepted the following Terms and Conditions. EU Holidays Pte Ltd shall be referred to as "the Company" in the following:

1. RESERVATION, DEPOSIT & FULL PAYMENT

- 1.1 If your minimum deposit is less than the required amount, kindly top up the difference within the next two (2) days.

| Tour Type | Minimum Deposit required per person (SGD) |
|--|---|
| All Group Tour Packages (Except Cruise) | \$1,000.00 |
| All Group Tour Package with Domestic Flight & Arctic Packages | \$1,500.00 |
| Cruise & Special departure Group Tour Packages, South America Tour Packages | \$2,000.00 |
| Free & Easy Packages | 80% of total tour fare |
| Tour organised by third (3rd) parties (e.g. luxury cruise, overseas land operator, airline etc.) | Amount per Terms & Conditions stipulated by principal suppliers |

- 1.2 Payment of deposit does not constitute confirmation of the tour. All group tours are subject to a minimum group size (as determined by the Company) in order for the confirmation to be effected and for the departure to be finalised.
- 1.3 Full payment is required no later than twenty-one (21) days prior to departure. In case of tours in peak season, full payment must be made one month before departure. If full payment is not received by the stipulated deadline, the Company reserves the right to forfeit the deposit and cancel the reservation. In such an event, the cancellation fee as stated in Section 2 is payable by the Customer.
- 1.4 By making deposit and balance payment, it is deemed that you have read, understood and accepted the Tour Booking Terms and Conditions in the booking form.
- 1.5 The Company reserves the right to request for a top-up on initial deposit for immediate issuance of air tickets, to avoid incurring additional surcharges.
- 1.6 Customers must top-up the deposits for ticket issuance as and when the air-tickets are required to be issued by the airlines at the stipulated dateline without prior notice. Failure to do so, the Company has the right to cancel the tour and the deposit will be forfeited.
- 1.7 Any amendment within **fourteen (14) days** or after tickets have been issued, the amendment fee would be the same as the cancellation fee as stipulated in the Terms and Conditions.

2. CANCELLATION BY THE CUSTOMER

- 2.1 Cancellation of booking must be made in writing or in person to avoid any misunderstanding.
- 2.2 The following cancellation fees apply once any group tour package booking is made:

| No. of days between departure and receipt of cancellation notice | Minimum Cancellation fee per person (SGD) |
|--|---|
| 35 working days or more | 100% of minimum Deposit Amount |
| 15 to 34 working days | 100% of minimum Deposit Amount or 50% of tour fare + Taxes, whichever is higher |
| 08 to 14 working days | 100% of minimum Deposit Amount or 75% of tour fare + Taxes, whichever is higher |
| 07 working days and below | Full tour fare + Taxes |

- 2.3 The above cancellation fees apply if the air-tickets are not issued. If the air-tickets are issued, the value of the air-tickets will be added onto the cancellation fees. The Company reserves the right to issue air-tickets without prior notice. If the deposit amount is insufficient to cover the cancellation fee, the Customer must pay for the difference.
- 2.4 'Working days' refer to Mondays to Fridays, excluding public holidays.
- 2.5 For Free and Easy packages, administrative fees and / or minimum one (1) night hotel rate will be imposed for those travel documents

not issued. Upon issuance of travel documents, changes will not be allowed and have no refund value.

- 2.6 For any cancellation of one customer in a twin/double sharing room, the other customer sharing the same room will need to top up an additional single supplement charge, unless the customer who cancelled had paid the full tour fare and taxes as the cancellation fee.

3. CANCELLATION BY THE COMPANY

- 3.1 The Company acts as an agent for service suppliers. After deposit or full payment has been made, all arrangements are still subject to final confirmation by service suppliers. At times due to low subscription for a group tour, the Company may choose to cancel the entire tour fourteen (14) days prior to departure.
- 3.2 The Company shall also not be held liable for any contingent costs incurred by the Customer arising from the cancellation.
- 3.3 The Company may recommend alternative tours either to the same destination or other tours, based on the current tour fare of that cancellation period. All prior special discounts given will be not extended for the alternative tours. Should the Customer decide not to accept the alternatives, a full refund on the amount paid by the Customer will be made accordingly by the Company without further obligation or liabilities on the part of the Company and that the Customer shall be deemed to have agreed to release the Company from all liabilities or damages in connection with the cancellation. There shall be no claim for inconvenience, loss of leave and transportation cost due to the cancellation of tour.

4. REFUND POLICY

- 4.1 No refunds will be made with respect to accommodation, meals, sightseeing tours or any other services included in the tour fare but not utilised by the Customer, either in part or full, or when the Customer amends, cancels or otherwise changes any arrangements after commencement of the tour.
- 4.2 All refunds will be made within fourteen (14) working days in a form of cheque. For credit card payments, refunds will be made through the credit card company.
- 4.3 Air tickets with refund value will only be refunded to Customers within **fourteen (14) working days** after the respective airlines have refunded to the Company. The standard processing period for air-ticket refunds vary from three (3) to six (6) months (subject to individual airlines). **However, Group and Promotional tickets are non-refundable.**
- 4.4 During peak period, the refund process may be longer due to increase in transactions.

5. AMENDMENT TO BOOKINGS (REQUESTED BY PASSENGERS)

- 5.1 For any changes in departure date or tour type, cancellation fees apply as listed under Section 2 on Cancellation by the Customer.
- 5.2 For every request made regardless of whether any previous amendment was confirmed by airlines, hotel or otherwise, there will be a minimum fee of \$250.00 per person per amendment. This does not include any other fees imposed by the airlines, ground operator or hotel.
- 5.3 A postponement of tour by the Customer for any reason is considered as cancellation. Under such circumstances, the above Cancellation Policies will apply accordingly.
- 5.4 Any changes made by the Customer to the existing booking must be in writing or in person at least fourteen (14) days before the tour, after which strictly NO amendments are allowed, or cancellation fee applies.
- 5.5 Any replacement or change of passengers will be considered as a cancellation and not an amendment. This term is applicable to all cases, including but not restricted to medical and pregnancy cases.

6. AMENDMENT TO TOUR ITINERARY BY COMPANY

The Company makes reasonable effort to avoid changes in the itinerary. However, the Company reserves the right to make minor changes at any time due to unforeseen circumstances, especially during peak periods or in the event of other circumstances beyond our control.

7. EXTENSION OF STAY / DEVIATION

- 7.1 Extension of stay may be permitted at the end of tour, subject to the restriction of the air ticket, seat availability and hotel confirmation prior to the commencement of the tour. All requests must be made before issuance of air tickets. If the extension of stay / deviation is unable to be confirmed three (3) weeks prior to the group's departure date, the passenger is deemed to stick to the original tour schedule. In the event that the original schedule has been changed by the Company, any extra cost will be borne by the Customer.
- 7.2 Cancellation fee is also applicable if the Customer cancels the booking because the extension / deviation is unable to be confirmed prior to departure.
- 7.3 Extension of stay / deviation will be at the Customer's own expense and transfer to the airport will not be provided.
- 7.4 It is the Customer's responsibility to hold firm confirmation of their return flight and to re-confirm their flight 72 hours prior to their return date.
- 7.5 The air ticket issued is a special ticket, restricted to the specific airline only. It is non-negotiable, non-endorsable, non-reissuable, non-refundable & non-reroutable. Any alteration in routing or dates by the Customer is solely at his/her own risk. The Company and its associated agents will not be held responsible for any inconvenience caused and extra expenses incurred. No refunds will be made for any unused air ticket, accommodation, meals, or sightseeing in part or full.

8. TRAVEL DOCUMENTS, TRAVEL INSURANCE & TRAVEL VOUCHERS

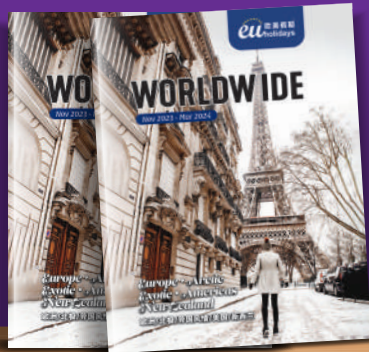
- 8.1 **Passport and other Travel Documents**
It is the Customer's sole responsibility to ensure that he / she has a valid passport with minimum six (6) months validity from the date of scheduled return to Singapore, as well as the necessary visas, vaccinations, health certificates and all necessary travel documents as required by various government authorities of the destinations of travel.
- 8.2 **Visa**
The Customer may seek advice from the Company on visa application; however, it is the Customer's own responsibility to obtain a valid visa.
- 8.2.1 If for any reason, application for visa or exit permit is rejected, full refund minus a \$250.00 administrative fee (excluding visa application fees paid to the respective embassies) will be made if the result of the rejection is submitted to the Company at least forty five (45) days prior to departure. If less than forty-five (45) days' notice is given, relevant cancellation fees as stated under the section Cancellation by the Customer will be applied.
- 8.2.2 It is the Customer's responsibility to check that multi-entry Visas have the correct entry dates and destinations before travelling. Please be aware that for some itineraries you may travel through a country without making an overnight stop but you will still require a Visa to enter/exit the country.
- 8.2.3 In consideration of the interests of other passengers in the same group, the Company strongly discourages all passengers from applying for Visa Upon Arrival at the destination country. The Company takes no responsibility for being unable to wait for passengers who apply for Visa Upon Arrival at the Customs.
- 8.2.4 The Company will not be responsible for any expenses, reimbursement or refund of the tour fare if the Customer is deported or refused entry by immigration authorities on the tour for whatever reasons, including improper travel documents, quarantine, custom regulations, possession of unlawful items or irregularities that may cause harm or damage to person or property.
- 8.2.5 For non-Singapore passport holders, please request for the Company to check on Visa requirements. The Company renders assistance in Visa application wherever possible. The Company cannot, however, guarantee the approval of Visa applications. This service is subject to (auxiliary) fees. Please check with the Company on the amount.

8.3 Travel Insurance

- 8.3.1 Arrangement of travel insurance coverage is strongly recommended with respect to unforeseen circumstances such as flight cancellation, trip cancellation, loss of deposit, baggage, personal

TERMS & CONDITIONS

- accident, injury, illness, etc. Under no circumstances shall the Company be construed as a carrier under a contract for safe carriage of the Customer or his / her baggage and other personal belongings.
- 8.3.2 The Company shall not be responsible for any loss or damage in relation to flight cancellation, trip cancellation, loss of personal baggage, accidents, injuries and illness.
- 8.3.3 Should there be any amendment to the date and duration of travel, it is the Customer's responsibility to inform the travel insurance company to amend the date and duration of the insurance coverage.
- 8.3.4 The Company will be pleased to assist in the enquiries of any travel insurance and related matters.
- 8.4 **Travel Vouchers**
The Company issues travel vouchers from time to time as part of its promotional activities. The Terms and Conditions for the redemption of travel vouchers are clearly spelt out in the appropriate documents and shall be binding on the Customer.
9. **GENERAL MATTERS RELATING TO TOURS**
- 9.1 **Accommodation**
Accommodation is as specified in the tour brochure / itinerary / tour booking form. In the event the specified accommodation is not available, every effort will be made to scout for an alternative in another accommodation of similar standard. Hotel room sizes, facilities and services may vary in different country. Accommodation for adults is based on twin-share, double or triple-share bedroom. Different room type might not be on the same level. Single room occupancy comes with an additional cost.
- 9.1.1 Room size is generally slightly smaller than what you may be used to. Space is precious commodity in Europe and especially in its busiest cities. Many of the buildings will have been in existence for hundreds of years and were not built with the modern traveller in mind. The upside is that they are usually in excellent locations and have a fascinating story to tell.
- 9.1.2 Bed sizes may also differ. In Europe, King and Queen-sized beds are very rare. Here, double beds are the norm and you may often find that a double room consists of two twin beds pushed together instead of a full bed, made up with one set of linen. You may also find that twin beds will be placed very close together.
- 9.1.3 A triple room is the same size as a twin-share room. The third bed is always a roll-away bed or sofa bed added into the room. As a result, you may feel that the room is very cramped and small.
- 9.1.4 Europeans are very socially and environmentally conscious, especially about air-conditioning in Europe. During autumn and winter seasons, the central air-conditioning will be switched off in the hotel rooms. So, do not expect that the air-conditioning will be switched on in the room. You may open the windows to let cold air in, where possible.
- 9.2 **Special Request**
If there are any requests regarding special meals, dietary requirements, adjoining rooms, flight seating arrangement and so on, please inform the Company upon booking. However, such requests are strictly subject to confirmation and availability by the airlines/hotels. There are no halal meals on tour.
- 9.3 **Baggage**
The Customer is usually allowed check-in baggage not exceeding twenty (20) kilograms. Only one piece of hand-luggage not exceeding seven (7) kilograms is allowed on board the aircraft. Excess baggage charges must be borne by the Customer and are subject to individual airlines' company policy.
- 9.4 **Meals**
- 9.4.1 Meals, including meals served on flights, are as indicated in the tour brochure / itinerary / tour booking form. In the event where in-flight meals are not served due to whatever reasons, there shall be no refund or replacement.
- 9.4.2 You and your travelling companions will generally dine together at a designated time. Table will often vary in size and free seating enables you to dine with family members or new travelling companions each evening. A breakfast buffet is included daily and will reflect the local regions tastes and culture. Very occasionally, an early departure may result in a light breakfast box for you to take away if applicable. Lunches are sometimes included but are usually an opportunity for the guest to enjoy some free time to visit a local café, bar or restaurant and eat where the locals do. Your tour manager will be able to provide you with a range of options to suit all tastes and preferences.
- 9.5 **Seat Rotation**
For the convenience of all members of the group, passengers may be requested to rotate their seating arrangements on the coach during the period of the tour. Please cooperate when requested to do so by the tour manager / tour leader / guide.
- 9.6 **Motor-coach**
For selected itineraries with Wi-Fi on coach using 3G mobile network, please be aware that the connection is slower than standard broadband and at times may not be available. It is good for checking emails, web browsing and updating social media accounts, but less so for streaming videos or large photo uploads.
- 9.7 **Single Room Supplement**
Please note that customers paying for single room occupancy supplement charge will be allocated a single room. The single room supplement charge as indicated in the booking form applies. Hotels will try their best to upgrade twin/double room for guests who opt for single room occupancy, but this may not be possible in the event when hotel occupancy rate is high.
- 9.8 **Suggested Excursion**
Optional list may be subject to change, depending on the time you are travelling or local circumstances including weather and days of the week. Further information will be provided by your Tour Manager / Guides during the tour.
- 9.9 **Flights**
The tour group might be comprised of flights on different airlines, so the Tour Manager may not be on the same flight as the group. If the group is not on the same flight as the Tour Manager, the group will have to proceed to transit on their own. There will be a check-in staff at Singapore Changi Airport to assist the group to check in if the Tour Manager is not flying together.
10. **PRICING POLICIES**
- 10.1 **Tour Fare Includes**
Return economy class group tour air ticket, local transport, accommodation, admission fees, meals and sightseeing programme as stipulated in the tour brochure / itinerary / tour booking form.
- 10.2 **Tour Fare Excludes**
Airport taxes, airport security taxes, airline insurance surcharges, fuel taxes, visa fees, travel insurance, customs user fees as specified by the airlines and airport authorities; local transfer not stated in the itinerary (e.g. free & easy, deviation), laundry, excess baggage charges, beverages, room services, gratuities to drivers and tour managers / local guides and tips to hotel porters (if any); and personal expenses. Please refer to the Company for visa fees, gratuities to drivers and tour managers / local guides, and tips to hotel porters.
- 10.3 **Cancellation Fee**
For Clause 2 – Cancellation By The Customer - tour fare refers to the selling tour fare plus airport taxes, airport security taxes, airline insurance surcharges and fuel taxes.
- 10.4 **Child Fare**
Child fare is applicable to children below twelve (12) years old on the scheduled date of departure & departure date from Singapore. The child fare is based on a twin-sharing accommodation with two adults and no additional bed will be provided. A surcharge will be imposed where an extra bed is required for the child or where the child occupies a room with only one adult.
- 10.5 **Mode of Payment**
Payment may be made in cash, by NETS, PAYNOW, AXS, cheques or credit cards. Cheques will only be accepted if presented to the Company at least seven (7) working days before scheduled tour departure. Credit card payment may incur additional surcharge for special promotion packages, you may refer to our staff for confirmation. Overseas Bank transfer may incur additional surcharge and to be borne by the Customer.
11. **RESPONSIBILITY**
- 11.1 The Company acts as an agent for the carriers, transportation companies, hotels and other principals of the tour packages. The Company accepts no responsibility for any injuries, losses, damages, accidents, flight cancellations, delays, theft, quarantine, customs regulations, strikes, weather hazards, political unrest, changes in itineraries, deportation or refusal of entry by Immigration Authorities resulting from improper travel documents, possession of unlawful items or irregularities that may cause damage to person or property. Any losses and/or expenses incurred are the responsibility of the passenger. Ensuring all proper travel documentation is in place is the sole responsibility of the Customer.
- 11.2 The failure of the Customer to follow reasonable instructions, including but not limited to check-in and check-out places or times or other cause and the losses and/or expenses resulting therefore shall be borne by the Customer.
- 11.3 The Company reserves the right to:
- 11.3.1 Alter tour itineraries, travel arrangements, accommodation due to unforeseen changes.
- 11.3.2 Cancel any reservations prior to departure for reasons, including but not limited to insufficient number of participants. The Company will recommend alternative tours, preferably to the same destination or to other destinations. Should the Customer decide not to accept the alternatives, the deposit or tour fare is to be refunded without further obligation on the part of the Company, upon the Customer's surrender to the Company of all documents issued by the Company for the purpose of the tour package.
- 11.3.3 Require any individual to withdraw from the tour if it is deemed that his/her behaviour is detrimental to or incompatible with the health, safety, interests, harmony and welfare of the other tour participants and the tour group as a whole. Under such circumstances, the Company shall be under no liability thereafter to any such person.
- 11.3.4 To specify the language in which the tour guide will conduct commentary in.
- 11.4 No tour guides, tour managers, tour leaders or other employees or agents of the Company are authorised to commit the Company to any liability and the Company shall not be bound by any statement or representation unless it is in writing and signed by a Management Executive of the Company.
- 11.5 All verbal agreements must be stated in writing and duly signed by the Manager.
- 11.6 The Company reserves the right to take photographs and videos of the Customer while he/she is on tour with the Company, to be used for advertising in brochures or publicity materials without obtaining any further consent from the Customer.
- 11.7 All tour fares for the respective tour packages are correct at the time of reservation. The Company reserves the right to revise the tour fares and to determine the date of commencement of such revised tour fares.
12. **COMPLAINT & CLAIM**
Should you encounter a problem during your tour, kindly inform the EU Holidays Tour Manager or local supplier immediately, who will try to make things right. If the matter was not resolved locally, please submit a feedback to EU Holidays in writing within seven (7) days from the date of return. It is important to provide us the information quickly. Please quote your booking reference number and all relevant information. Failure to follow this procedure may delay or deny us the opportunity to investigate and rectify the problem, which may affect the way your complaint is dealt with and your rights under this contract.
13. **MISCELLANEOUS**
The Company reserves the right to change, amend, insert or delete any Tour Booking Terms and Conditions contained within this document, as the case may be, without prior notice. The Tour Booking Terms and Conditions complement those Terms and Conditions contained in the relevant documents provided by third (3rd) party service providers such as airlines or cruise tickets, hotel check-ins etc.



Suntec Singapore Convention & Exhibition Centre

1 Raffles Boulevard, Level 2 Crescent 2, Singapore 039593

(Beside Link Bridge to Marina Square/Opposite Don Don Donki #02-379-387)

☎ +65 6958 8888 ⑆ @euholidays ① www.euholidays.com.sg ② sales@euholidays.com.sg