

 欧美假期<sup>®</sup>  
holidays

# 日本 JAPAN

Nov 2023 - Mar 2024





# *Extra Miles, Extra Smiles*

## **KNOWLEDGE & EXPERIENCE**

Armed with vast travel knowledge and invaluable experience, our staff are well-equipped to assist our customers in planning their holidays to suit their needs. The company provides all staff with comprehensive in-house training, on-the-job training, and external courses led by professionals in the field. These value-added programmes focus on enriching our staff's knowledge and improving their expertise so as to provide the best travel experience for all destinations, worldwide.

## **PASSION & LOVE**

When it comes to travel, there is no one more passionate and enthusiastic than us at EU Holidays. Our staff's love and dedication for their work drive them to deliver excellent, quality service. They are trained to be attentive to every detail of our customers' needs so as to fulfil what the customer desires, as much as possible.

## **EXCELLENT QUALITY MADE AFFORDABLE**

Quality should never be compromised for affordability. This is why at EU Holidays, we believe in having the best of both worlds. Our tour packages are customised to offer the best value for your money - an attractive price point, 4- to 5-star accommodations, scrumptious meals, and an experience of a lifetime. EU Holidays is the only agency that offers you a night's stay in a 5-star Hilton hotel in Venice as well as a 5-star Heritage hotel in Interlaken.

## **INNOVATING TRENDSETTERS**

EU Holidays has always strived to stay ahead of the latest trends, especially for travel and technology. Our company was the first travel agency to introduce exclusive tours to the Norway Arctic Circle, thus kick-starting the popular trend of winter holidays to Finland. We also make effort to reach out to tourism organisations and companies overseas to secure the best arrangements for our tour packages, tour activities and accommodations. One example is our Northern Europe tours, where we have made special arrangements for our customers to stay in the newly-launched, spacious glass igloos in Finland. We are also the sole distributing partner for exclusive sledding activities on Mt. Bussalp for our Switzerland tours.

## **DIVERSE CHOICES & OPTIONS**

EU Holidays is well-known for our ability to design different itineraries to cater for various clienteles. Each itinerary can be specially personalised to fit every customer's needs, interests and preferences, including the option to extend your stay. We also launch new itineraries and destinations frequently because we believe in creating novel and exclusive experiences for our customers. At EU Holidays, we take special effort to craft a wide variety of unique itineraries that customers can choose from, such as country-focused or multi-countries packages.

## **REPUTATION & AWARD WINNING**

Over the years, EU Holidays had received many prestigious awards, such as the Singapore Prestige Brand Award from the Association of Small & Medium Enterprises (ASME) and the Singapore Quality Class certification from Enterprise Singapore. Our company was voted the No.1 Travellers' Choice for Europe, USA, Japan and China by Weekender Singapore for 2019. EU Holidays was also awarded the TripZilla Excellence Awards 2022 for our Europe, Australia, Exotic, and Japan tours. We were also named the top travel agent by our supporting partners, namely Cathay Pacific Airways, Emirates, Etihad Airways, Finnair, Lufthansa, Qatar Airways, Kaksaluttanen Arctic Resort, and Jungfrau Region Grindelwald Sledging.



*We'll do it for you!*





## ABOUT EU HOLIDAYS

### MISSION

Delighting every travel experience

### VISION

Be Travellers' FIRST choice

### VALUES

1. Deliver what we promise
2. Serve customers passionately
3. Do what we do, best
4. Make work fun
5. Care for employees
6. Stay as one big family as we grow
7. Be a good business partner
8. Be socially responsible

## PROGRESS AND MILESTONES

Founded in late 2010, EU Holidays was established by driven, dynamic and innovative individuals who banded together with the sole intention of offering customers a whole new travel experience and bring innovations to travel industry. Within 13 years of business operations, we have expanded EU Holidays and opened three subsidiaries: EU MICE, EU Asia Holidays and EU Vacations (Malaysia). We have also diversified our business to include outbound, inbound, corporate, wholesales, and MICE products and services.

Since 2012, EU Holidays Group has consistently been voted as the top travel agency for various destinations such as Europe, Arctic, USA, Exotic, Japan, Korea, China, and more by our industrial partners, namely: Weekender Singapore, Tripzilla.sg, escape! Magazine, and Travel Journal. Over the years, we have also been named as the top travel agent by our supporting partners: Cathay Pacific, Emirates, Etihad Airways, Finnair, Lufthansa, Qatar Airways, Kakslauttanen Arctic Resort, and Jungfrau Region Grindelwald Sledging.

In 2016, EU Holidays went through the year-long Customer-Centric Initiative (CCI) programme and successfully attained the Singapore Service Class certification from the Standards, Productivity and Innovation Board (SPRING) Singapore. The following years also saw EU Holidays receive the Singapore Prestige Brand Award from the Association of Small & Medium Enterprises (ASME) and the Singapore Quality Class certification awarded by government agency Enterprise Singapore.

With our unparalleled curatorial expertise and leading presence in the travel market in Singapore, we will strive to serve with the same passion to delight your every travel experience!





# Singapore's

## BIGGEST POOL OF



ANDY  
THONG



CONNIE  
HAY



CHRIS  
TEO



ONG  
KAH HOO



ANNA  
ANG



KEK  
OOI LENG



TEVIN  
SUA



PHILIP  
CHIN



DING  
JUN BIN



DYLAN  
TEOH



KEVIN  
CHENG



TIMOTHY  
WEE



RICKY  
TIANG



SHAWN  
LAI



LUKE SOH



SIEW  
HOON



JOANNE  
HO



MERELYN  
LEONG



ANDY  
YUAN



ANN SOO



JASON  
YEONG



ELVIN  
MOK



LEOW  
SHEUE  
JUAN



NANCY  
LIAW



CHRIS  
CHIN



FRANKIE  
KHNG



PACER  
LIM



KENNETH  
NG



SAMMY  
WAN



ANN YEO



RONALD  
QUEK



WHYEE  
CHONG



LAI  
JAR WEI



RUSSELL  
TAN



GIDEON  
TNG



CHRISTTON  
NG



CALVEN  
TEE



DAVID  
LEE



SALLY  
LIM



VICKY  
TAN



LISA POH



KOK  
AI LING



WONG  
TIAN BAO



JASON  
ANG



PHILIP  
POH



ALICIA  
PHANG



ELAINE  
LAI



PAUL TEE



KAT  
CHONG



ADELINE  
ONG



NICOLE  
SEAH



EDDY  
LOH



BEN LUM



IVY  
ER



APPLE  
YANG





# PROFESSIONAL *TOUR MANAGERS*





# CONTENTS



**06** 9D6N Winter Wonderland Hokkaido  
(In HKD Out CTS)

JPWWHW

**10** 9D6N Winter Wonderland Hokkaido  
(In/Out CTS)

JPWWCW

**14** 9D6N Hokkaido Ice Breaking Adventure

JPHICW

**18** 9D7N Central Japan Family Fun +  
Theme Park

JPFFTW

**22** 9D7N Charming Golden Route Honshu

JPCGRW

**26** 9D7N Hidden Gems Of Shikoku  
Wakayama

JPSWKW

**30** 9D7N Unveiling Treasures Of Tohoku

JPNSTW

**34** 9D6N Tateyama Kurobe Alpine Route  
(In NGO Out KIX)

JPTYMS

**38** 9D7N Tateyama Kurobe Alpine Route  
(In/Out Tokyo)

JPTYTS

**42** 8D7N Shirakawago Twilight  
Spectacular

JPSLUW

**46** 6D4N Embracing Nature Okinawa +  
2N Free In Taipei Tour

JPOKAW

**50** 9D7N Sakura Splendor In Central  
Japan

JPSAKS

**54** 9D6N Hokkaido Blossom Symphony

JPHSAS

**58** 9D7N Scenic Kyushu + 2N Free In  
Tokyo

JPSNKW







# 日本地图 JAPAN MAP



9D6N

# Winter Wonderland HOKKAIDO



9天6晚 北海道冰雪奇缘之旅

JPWWHW | Nov 2023 - Mar 2024

SCAN FOR  
DIGITAL COPY



## COUNTRY FOCUSED

Experience the captivating beauty of Hokkaido's winter charms from natural marvels to cultural immersion, culinary delights to thrilling adventures.

FORT GORYOKAKU WINTER

I WAS  
HERE!





# HIGHLIGHTS

## HAKODATE

- Hakodate Tropical Botanic Garden
- Hakodate Meijikan
- Mt. Hakodate (ropeway)
- Hakodate Morning Market
- Fort Goryokaku
- Onuma Quasi National Park

## LAKE TOYA

- Mt. Uzu (ropeway)

## NISEKO

- Half Day Ski

## OTARU

- Otaru Canal
- Kitachi Glass Shop
- Music Box Museum (DIY Experience)

## ASAHIKAWA

- Asahikawa Ramen Village
- Asahikawa Zoo

## SOUNKYO

- Daizetsuzan National Park
- Ginga Waterfall

## SAPPORO

- Ishiya Chocolate Museum
- Sapporo Beer Factory
- Hokkaido Shrine
- Mt Okura Olympic Jump Stadium
- Tanukikoji Shopping Arcade
- Mitsui Outlet Sapporo

## NOBORIBETSU

- Noboribetsu Date Jidaimura
- Noboribetsu Jigokudani



# DELICACIES

## Meal Plan

6 Breakfasts, 3 Lunches, 5 Dinners

## Specialties

- Salmon Chan Chan Yaki Set
- Seasonal Seafood Hotpot
- Crab Kaiseki Meal
- Japanese BBQ

# 4★ HOTELS

🏨 **HAKODATE** Kokusai Hotel

🏨 **NISEKO** Niseko Hilton

**OTARU** Hotel Sonia Otaru

🏨 **SOUNKYO** Sounkyo Hotel

Taisetsu

**SAPPORO** Mercure Hotel

Sapporo

\*Note: Hotels subject to final confirmation. Should there be changes, customers will be offered accommodation similar to this list.

Service Fee Guideline: (Based on 9D6N)

- JPY9000 per person

Notes:

- The sequence of the itinerary, flight schedules and hotels are subject to change without prior notice in the event of unforeseen circumstances.
- During major events, accommodation may be relocated without prior notice.
- All pictures shown are for illustration purpose only.
- A minimum group size of 15 passengers is required for a confirmed departure. Additionally, for groups consisting of 20 or more passengers, a tour leader will be assigned.
- Tour is conducted in Mandarin unless otherwise stated.

**服务费: (9天6晚)**

- 每人9000日元

备注:

1. 行程顺序可能受到不可预测的情况或 恶劣天气的情况下, 将会更改或以其他景点替代行程。以确保旅程的顺畅, 如有改动, 恕不另行通知。
2. 在重大活动期间, 住宿可能会搬迁, 恕不另行通知。
3. 所有显示的图片仅用于说明目的。
4. 确认出发需要至少15名旅客的团体人数, 20名以上旅客安排随团领队。
5. 导游全程以中文解说, 除非另有说明。



# 9D6N Winter Wonderland Hokkaido

## 01 SINGAPORE ▶ HAKODATE

Meal on Board

Our vacation begins with a pleasant flight from Singapore to the Land of the Rising Sun, Japan.

## 02 HAKODATE

Japanese Set Meal Dinner

Upon arrival, start your journey at [Hakodate Tropical Botanical Garden](#), a popular attraction where you can see the Hot-Tubbing Snow Monkeys and the green house, which is the main exhibit. After that, proceed to [Hakodate Meijikan](#), this stately red-brick building was built as Hakodate Post Office in 1911 and is now used as a shopping mall. This evening, head up to [Mt. Hakodate](#) via cable car to the top of the mountain to enjoy a panoramic city view.

\* In case of maintenance or bad weather, the bus will be used to go up the mountain instead.

## 03 HAKODATE ▶ NISEKO

Breakfast, Salmon Chan Chan Yaki Set Lunch, Dinner

Begin your day with a visit to [Hakodate Morning Market](#) where you can find a variety of delectable fresh Hakodate produce. After that, head over to [Fort Goryokaku](#), a massive, star-shaped Western style citadel built to defend Hokkaido from invasion. Then access the observation deck Goryokaku Tower for a bird's-eye view of the huge fortress. Continue, we will proceed to [Onuma Quasi-National Park](#), one of the most beautiful and breath-taking parks. Next, board the [Mt Usu Ropeway](#) (cable car) leading close to the top of Mount Usu. The upper station's observation deck offers panoramic views of Lake Toya and Showa Shinzan while the second offer views of the ocean and Mount Usu's largest crater.

## 04 NISEKO ▶ OTARU

Breakfast, Seasonal Seafood Hot Pot Dinner

Today, spend half of the day at leisure in the Ski Resort. You can choose to enjoy some ski adventure equipment rental excluded and/or take part in other activities in the resort. After your fun adventures, move over to [Otaru Canal](#) where there are many shops selling musical

boxes, crystal and glassware that mirror the romantic atmosphere of this enchanting town. Don't forget to visit the [Kitaichi Glass Shop](#) and enjoy the music box DIY experience at [Music Box Museum](#).

## 05 OTARU ▶ ASAHIKAWA ▶ SOUNKYO

Breakfast, Dinner

This morning, head over to [Ishiya Chocolate Factory](#), also known as "White Lover Chocolate" Factory. Here, you can see how the white chocolate products are being produced in this European style building. After sightseeing, enjoy a local meal at [Asahikawa Ramen Village](#) which offers 8 of Asahikawa's most well-known ramen shops in one location. After lunch, proceed to [Asahiyama Zoo](#) that features enclosures that allow visitors to observe the animals from various angles, many of which are unique to the zoo. During winter, you may get to see a penguin parade show! Continue, move to Hokkaido's largest [Daisetsuzan National Park](#) for its unspoiled wilderness and beautiful fall colours and snow. Proceed further to [Ginga Waterfalls](#), aka 'wife and husband waterfalls'. Ginga runs down the cliff wall in a thin, delicate white thread, while the Ryusei flows down in a thick, powerful cascade.

## 06 SOUNKYO ▶ SAPPORO

Breakfast, Japanese BBQ Lunch, Crab Kaiseki Dinner

After breakfast, proceed to [Sapporo Beer Factory](#) to learn how the beer is being produced and get to taste their fresh local beer on the spot. After that, pay a visit to [Hokkaido Shrine](#), a traditional place of worship for the Japanese "Shindo" and the oldest shrine in Hokkaido. This is also the best location to enjoy the scenery for all four seasons. After your succulent meal, continue to [Mt. Okura Olympic Jump Stadium](#). The 90 meter ski jump competitions of the Winter Olympics 1972. Nowadays, the Okurayama Observatory at the top of the hill can be accessed via a chair lift for spectacular views of Sapporo. Followed by [Tanukikoji Shopping Arcade](#). This shopping arcade is in operation since the frontier period and it's also a great place to buy some souvenirs!



TANUKIKOJI SHOPPING ARCADE

## 07 SAPPORO (FREE DAY)

Breakfast

Today you will have some leisure time to enjoy the charm of Sapporo, the largest city in Hokkaido.

## 08 SAPPORO ▶ CHITOSE ▶ SINGAPORE

Breakfast, Meal on Board

Today, begin your day with a visit to [Noboribetsu Date Jidaimura](#), a village theme park where they have a collection of Edo period culture and you'll get a chance to try out Japanese archery. Then, head over to [Jigokudani](#) (Hell Valley), which features hot steam vents, sulphurous streams, and other volcanic activities. After that, enjoy a last minute shopping at [Mitsui Outlet Sapporo](#) before transfer to airport. Bid farewell to this beautiful country as you transfer to the airport for your flight home.

## 09 HOME SWEET HOME

We hope you enjoyed your vacation with EU Holidays and we look forward to seeing you again on your next trip.



# 9天6晚 北海道冰雪奇缘之旅



洞爷湖

## 01 新加坡 ▶ 函馆

机上用餐

在新加坡樟宜机场集合，乘搭豪华客机飞往“日出之国”日本。

## 02 函馆

日式套餐晚餐

- **函馆市热带植物园** - 可以观赏热带植物的植物园，当然，对于旅行者来说最具有吸引力的还属位于植物园内的温泉猴山，每年12月至次年5月间，植物园内饲养的一群日本猕猴会来到温泉池里泡澡。
- **函馆明治馆** - 位于金森红砖仓库附近，也是一座爬满常春藤的红砖建筑，原为函馆中央邮局，现在是一处购物中心，有玻璃制品与八音盒等北海道知名工艺品销售，还有一些北海道葡萄酒、等礼品可供购买。
- **函馆山（缆车）** - 函馆景色之美在于城市的两边呈现出了两条弧形的海岸线，冬天的景色更是美不胜收。（\*遇到维修或坏天气将会以巴士上山来取代）

## 03 函馆 ▶ 洞爷湖 ▶ 二世谷

早餐，三文鱼Chan Chan烧烤午餐，晚餐

- **函馆朝市** - 北海道最热闹的集贸市场之一，朝市有大大小小200多家店铺和400多家水产店，形成了一个很有当地特色的大型水产市场。
- **五棱郭塔（展望台）** - 是日本唯一的古老西式星形城堡，此地也是春季欣赏樱花及秋季欣赏红叶最佳之地。
- **大沼国定公园** - 享有新日本三大景观之誉，是北海道屈指可数的旅游胜地。
- **有珠火山（缆车）** - 欣赏昭和及明治与远眺洞爷湖。
- **洞爷湖** - 接下来我们会和美丽的洞爷湖合影，留下美好回忆。

## 04 二世谷 ▶ 小樽

早餐，石狩火锅晚餐

- **半天滑雪乐**（不含用具）- 你可以利用自由时间来享受一下北海道的滑雪乐趣，你也可以自行参加滑雪场的其它活动。
- **小樽运河** - 也是小樽著名的观光胜地，运河旁有许多石砌仓库群。小樽步行街也有著名的北一硝子的玻璃饰品专卖，北果楼，咖啡馆，寿司，巧克力等。
- **小樽八音盒（DIY体验）** - 这里是日本最古老，也是规模最大的八音盒博物馆。体验制作世界上独一无二的音乐盒！

## 05 小樽 ▶ 旭川 ▶ 层云峡

早餐，晚餐

- **白色恋人巧克力博物馆** - 是一座洋溢着英伦气息的欧式古典城堡以及可买白色恋人巧克力饼干。
- **旭川拉面村** - 集中了8家人气拉面店，可以在这里自行品尝北海道多种口味的拉面。
- **旭川动物园** - 是日本最受瞩目的人其动物园之一，重头戏企鹅游行每天都在这里上演，另外还有北极熊馆，海豹馆，猴子山，黑猩猩之森，河马馆等多个主题展馆供你观赏大自然的奥妙。
- **大雪山国立公园** - 位于北海道中部及阿寒西部，有壮观的火山头景观以及险峻的峡谷。
- **银河瀑布** - 由于形态优美，又被称为“女瀑布”。流星瀑布则从落差90公尺的绝壁上一口气冲下来，声势慑人，又被称为“男瀑布”。

## 06 层云峡 ▶ 札幌

早餐，日式烧烤午餐，螃蟹怀石料理晚餐

- **札幌啤酒博物馆** - 参观其制酒过程及了解它在日本的历史，还可试饮刚制成的新鲜啤酒。
- **北海道神宫** - 是北海道最大的神宫之一。
- **大仓山跳台滑雪体育场** - 大仓山跳跃体育场由企业家大仓纪一郎于1931年建造。您可以从这里乘电梯到山顶，欣赏札幌市中心的壮丽景色。
- **狸小路购物街** - 有超过150家流行服饰店，餐厅，土产店等胜地。

## 07 札幌（自由行）

早餐

这天你将有自由时间尽情享受北海道第一大城市札幌的魅力。

## 08 札幌 ▶ 新千岁 ▶ 新加坡

早餐，机上用餐

- **登别伊达时代村** - 是一座再现江户时代(1600 - 1864)时主题公园。
  - **登别地狱谷** - 我们将停留在地狱谷，这里以热蒸汽喷口，硫磺流以及火山活动闻名。
  - **三井奥特莱斯免税店** - 在此你能够尽情地购物，为离开北海道前做最后的冲刺疯狂扫货。
- 最后集合告别日本，乘搭客机飞返新加坡。

## 09 甜蜜家园

希望您同欧美假期共享美丽的回忆，期待在下次旅行中再次见到您。



9D6N

# Winter Wonderland HOKKAIDO



## 9天6晚北海道冰雪奇缘之旅

JPWWCW | Nov 2023 - Mar 2024

### COUNTRY FOCUSED



Experience the captivating beauty of Hokkaido's winter charms from natural marvels to cultural immersion, culinary delights to thrilling adventures.

SCAN FOR  
DIGITAL COPY



SAPPORO BEER MUSEUM



Wifi  
Router



Relaxed

PACE



Active



# HIGHLIGHTS

## NOBORIBETSU

- Noboribetsu Date Jidaimura
- Noboribetsu Jigokudani

## LAKE TOYA

- Mt. Uzu (ropeway)

## HAKODATE

- Hakodate Meijikan
- Mt. Hakodate (ropeway)
- Hakodate Morning Market
- Hakodate Tropical Botanic Garden
- Fort Goryokaku
- Onuma Quasi National Park

## NISEKO

- Half Day Ski

## OTARU

- Otaru Canal
- Kitachi Glass Shop
- Music Box Museum (DIY Experience)

## ASAHIKAWA

- Asahikawa Ramen Village
- Asahikawa Zoo

## SOUNKYO

- Daizetsuzan National Park
- Ginga Waterfall

## SAPPORO

- Ishiya Chocolate Museum
- Sapporo Beer Factory
- Hokkaido Shrine
- Tanukikoji Shopping Arcade
- Mitsui Outlet Sapporo



# DELICACIES

## Meal Plan

6 Breakfasts, 4 Lunches, 6 Dinners

## Specialties

- Seafood Hot Pot
- Salmon Chan Chan Yaki Set
- Seasonal Ishikari Hotpot
- Crab Kaiseki Meal
- Japanese BBQ

# 4★ HOTELS

**NOBORIBETSU** Noboribetsu  
Manseikaku

**HAKODATE** Kokusai Hotel

**NISEKO** Niseko Hilton

**OTARU** Hotel Sonia Otaru

**SOUNKYO** Sounkyo Hotel  
Taisetsu

**SAPPORO** Mercure Hotel  
Sapporo

\*Note: Hotels subject to final confirmation. Should there be changes, customers will be offered accommodation similar to this list.

Service Fee Guideline:  
(Based on 9D6N)

- JPY9000 per person

Notes:

- The sequence of the itinerary, flight schedules and hotels are subject to change without prior notice in the event of unforeseen circumstances.
- During major events, accommodation may be relocated without prior notice.
- All pictures shown are for illustration purpose only.
- A minimum group size of 15 passengers is required for a confirmed departure. Additionally, for groups consisting of 20 or more passengers, a tour leader will be assigned.
- Tour is conducted in Mandarin unless otherwise stated.

服务费：(9天6晚)

- 每人9000日元

备注：

1. 行程顺序可能受到不可预测的情况或恶劣天气的情况下，将会更改或以其他景点替代行程。以确保旅程的顺畅，如有改动，恕不另行通知。
2. 在重大活动期间，住宿可能会搬迁，恕不另行通知。
3. 所有显示的图片仅用于说明目的。
4. 确认出发需要至少15名旅客的团体人数，20名以上旅客安排随团领队。
5. 导游全程以中文解说，除非另有说明。

MOUNT HAKODATE, HOKKAIDO

Japan 11



# 9D6N Winter Wonderland Hokkaido

## 01 SINGAPORE ▶ CHITOSE

Meal on Board

Our vacation begins with a pleasant flight from Singapore to the Land of the Rising Sun, Japan.

## 02 CHITOSE ▶ NOBORIBETSU

Dinner

Upon arrival, transfer to Noboribetsu and free at your own leisure before dinner.

## 03 NOBORIBETSU ▶ LAKE TOYA ▶ HAKODATE

Breakfast, Seafood Hot Pot

Lunch, Japanese Set Dinner

Start your journey with a visit to [Noboribetsu Date Jidaimura](#), a village theme park where they have a collection of Edo period culture and you'll get a chance to try out Japanese archery. Then, head over to [Jigokudani](#) (Hell Valley), which features hot steam vents, sulphurous streams, and other volcanic activities. Next, board the [Mt. Usu Ropeway](#) (cable car) leading close to the top of Mount Usu. The upper station's observation deck offers panoramic views of Lake Toya and Showa Shinzan while the second offer views of the ocean and Mount Usu's largest crater. After that, proceed to [Hakodate Meijikan](#), this stately red-brick building was built as Hakodate Post Office in 1911 and is now used as a shopping mall. This evening, head up to [Mt. Hakodate](#) via cable car to the top of the mountain to enjoy a panoramic city view.

Remark: In case of maintenance or bad weather, the bus will be used to go up the mountain instead.

## 04 HAKODATE ▶ LAKE TOYA ▶ NISEKO

Breakfast, Salmon Chan Chan Yaki Set Lunch, Dinner

Start your day with a visit to [Hakodate Morning Market](#) where you can find a variety of delectable fresh Hakodate produce. Next, proceed to [Hakodate Tropical Botanical Garden](#), a popular attraction where you can see the Hot-Tubbing Snow Monkeys and the green house, which is the main exhibit. After that, head over to [Fort Goryokaku](#), a massive, star-shaped Western style citadel built to defend Hokkaido from



JIGOKUDANI HELL VALLEY

invasion. Then access the observation deck Goryokaku Tower for a bird's-eye view of the huge fortress. Next, we will proceed to [Ōnuma Quasi-National Park](#), one of the most beautiful and breath-taking parks. Continue your tour onwards to picturesque [Lake Toya](#) which was chosen as the location of the G8 summit hosted by Japan in 2008 before transfer to Niseko.

## 05 NISEKO ▶ OTARU

Breakfast, Seasonal Ishikari Hot Pot Dinner

Today, spend half of the day at leisure in the Ski Resort. You can choose to enjoy some ski adventure equipment rental excluded and/or take part in other activities in the resort. After your fun adventures, move over to [Otaru Canal](#) where there are many shops selling musical boxes, crystal and glassware that mirror the romantic atmosphere of this enchanting town. Don't forget to visit the [Kitaichi Glass Shop](#) and enjoy the music box [DIY experience at Music Box Museum](#).

## 06 OTARU ▶ ASAHIKAWA ▶ SOUNKYO

Breakfast, Dinner

This morning, head over to [Ishiya Chocolate Factory](#), also known as "White Lover Chocolate" Factory. Here, you can see how the white chocolate products are being produced in this European style building. After sightseeing, enjoy a local meal at [Asahikawa Ramen Village](#) which offers 8 of Asahikawa's most well-known ramen shops in one location. After lunch, proceed to [Asahiyama Zoo](#) that features enclosures that allow visitors to observe the animals from various angles, many of which are unique to the

zoo. During winter, you may get to see a penguin parade show! Continue, move to Hokkaido's largest [Daisetsuzan National Park](#) for its unspoiled wilderness and beautiful fall colours and snow. Proceed further to [Ginga Waterfalls](#), aka 'wife and husband waterfalls'. Ginga runs down the cliff wall in a thin, delicate white thread, while the Ryusei flows down in a thick, powerful cascade.

## 07 SOUNKYO ▶ SAPPORO

Breakfast, Japanese BBQ Lunch, Crab Kaiseki Dinner

After breakfast, proceed to [Sapporo Beer Factory](#) to learn how the beer is being produced and get to taste their fresh local beer on the spot. After that, pay a visit to [Hokkaido Shrine](#), a traditional place of worship for the Japanese "Shindo" and the oldest shrine in Hokkaido. This is also the best location to enjoy the scenery for all four seasons. After lunch, proceed to [Tanukikoji Shopping Arcade](#). This shopping arcade is in operation since the frontier period and it's also a great place to buy some souvenirs!

## 08 SAPPORO ▶ CHITOSE ▶ SINGAPORE

Breakfast, Meal on Board

Today, enjoy a last minute shopping at [Mitsui Outlet Sapporo](#) before transfer to airport. Bid farewell to this beautiful country as you transfer to the airport for your flight home.

## 09 HOME SWEET HOME

We hope you enjoyed your vacation with EU Holidays and we look forward to seeing you again on your next trip.



# 9天6晚 北海道冰雪奇缘之旅



小樽运河

## 01 新加坡 ▶ 新千岁

机上用餐

在新加坡樟宜机场集合，乘搭豪华客机飞往“日出之国”日本。

## 02 新千岁 ▶ 登别

晚餐

由导游接机前往晚餐后，入住酒店。

## 03 登别 ▶ 洞爷湖 ▶ 函馆

海鲜火锅午餐，日式套餐晚餐

- **登别伊达时代村** - 是一座再现江户时代（1600 - 1864）时的街风貌，以观赏戏剧为主，体验当时社会情形的主题公园。
- **登别地狱谷** - 这里以热蒸汽喷口，硫磺流以及火山活动闻名。
- **有珠火山**（缆车）- 欣赏昭和及明治与远眺洞爷湖。
- **函馆明治馆** - 是一座爬满常春藤的红砖建筑，原为函馆中央邮局，现在是一处购物中心，有玻璃制品与八音盒等北海道知名工艺品销售。
- **函馆山**（缆车）- 函馆景色之美在于城市的两边呈现出了两条弧形的海岸线，冬天的景色更是美不胜收。

（\*遇到维修或坏天气将会以巴士上山来取代）

## 04 函馆 ▶ 洞爷湖 ▶ 二世谷

早餐，三文鱼Chan Chan烧烤午餐，晚餐

- **函馆朝市** - 北海道最热闹的集贸市场之一，朝市有大大小小200 多家店铺和400多家水产店，形成了一个很有当地特色的大型水产市场。
- **函馆市热带植物园** - 可以观赏热带植物的植物园，当然，对于旅行者来说最具有吸引力的还属于位于植物园内的温泉猴山，每年12月至次年5月间，植物园内饲养的一群日本猕猴会来到温泉池里泡澡。
- **五棱郭塔**（展望台）- 是日本唯一的古老西式星形城堡，此地也是春季欣赏樱花及秋季欣赏红叶最佳之地。
- **大沼国定公园** - 享有新日本三大景观之誉，是北海道屈指可数的旅游胜地。
- **洞爷湖** - 接下来我们会和美丽的洞爷湖合影，留下美好回忆。

## 05 二世谷 ▶ 小樽

早餐，石狩火锅晚餐

- **半天滑雪乐**（不含用具）- 你可以利用自由时间来享受一下北海道的滑雪乐趣，你也可以自行参加滑雪场的其它活动。
- **小樽运河** - 也是小樽著名的观光胜地，运河旁有许多石砌仓库群。小樽步行街也有著名的北一硝子的玻璃饰品专卖，北果楼，咖啡馆，寿司，巧克力等。
- **小樽八音盒**（DIY体验）- 这里是日本最古老，也是规模最大的八音盒博物馆。体验制作世界上独一无二的音乐盒！

## 06 小樽 ▶ 旭川 ▶ 层云峡

早餐，晚餐

- **白色恋人巧克力博物馆** - 是一座洋溢着英伦气息的欧式古典城堡以及可买白色恋人巧克力饼干。
- **旭川拉面村** - 集中了8家人气拉面店，可以在这里自行品尝北海道多种口味的拉面。
- **旭川动物园** - 是日本最受瞩目的人其动物园之一，重头戏企鹅游行每天都在这里上演，另外还有北极熊馆，海豹馆，猴子山，黑猩猩之森，河马馆多个主题展馆供你观赏大自然的奥妙。

- **大雪山国立公园** - 位于北海道中部及阿寒西部，有壮观的火山头景观以及险峻的峡谷。
- **银河瀑布** - 由于形态优美，又被称为“女瀑布”。流星瀑布则从落差90公尺的绝壁上一口气冲下来，声势慑人，又被称为“男瀑布”。

## 07 层云峡 ▶ 札幌

早餐，日式烧烤午餐，螃蟹怀石料理晚餐

- **札幌啤酒博物馆** - 参观其制酒过程及了解它在日本的历史，还可试饮刚制成的新鲜啤酒。
- **北海道神宫** - 是北海道最大的神宫之一。
- **狸小路购物街** - 有超过150家流行服饰店，餐厅，土产店等胜地。

## 08 札幌 ▶ 新千岁 ▶ 新加坡

早餐，机上用餐

- **三井奥特莱斯免税店** - 在此你能够尽情地购物，为离开北海道前做最后的冲刺疯狂扫货。
- 最后集合告别日本，乘搭客机飞返新加坡。

## 09 甜蜜家园

希望您同欧美假期共享美丽的回忆，期待在下次旅行中再次见到您。



白色恋人巧克力博物馆



# 9D6N HOKKAIDO ICE BREAKING ADVENTURE

## 9天6晚 北海道破冰探险之旅

JPHICW | Jan - Feb 2024



### COUNTRY FOCUSED



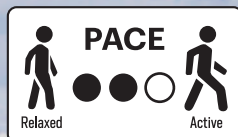
Embark on the extraordinary Abashiri Ice Breaking adventure, where you can witness the raw power of nature and immerse yourself in the fascinating history

ICE-BREAKING CRUISE

SCAN FOR  
DIGITAL COPY



Wifi  
Router





# HIGHLIGHTS

## ASAHIKAWA

- Asahiyama Zoo
- Otokoyama Sake Brewing Museum

## ABASHIRI

- Ginga Waterfall
- Ryusei Waterfall
- Abashiri Prison Museum
- Ryuhyokan
- Mt. Iou.

## AKAN

- Akan Ainu Kota

## KUSHIRO

- Washo Market
- Kusharo Park
- Tancho Crane Nature Park

## IKEDA

- Ryugetsu Factory
- Northern Horse Park

## KITAHIROSHIMA

- Kitahiroshima Outlet

## SAPPORO

- Tanukikoji Shopping Arcade
- Hokkaido Shrine

## OTARU

- Siroikohibito Park
- Otaru Canal



## DELICACIES

### Meal Plan

6 Breakfasts, 5 Lunches, 5 Dinners

### Specialties

- Shabu Shabu
- Yakiniku BBQ
- Grill seafood set
- Japanese set
- Seafood Hot Pot
- Gala dinner (Crab Buffet)

## 4★ HOTELS

**ASAHIKAWA** Art hotel Asahikawa

**ABASHIRI** Abashiri Koso hotel

**AKAN** New Akan Hotel

**TOKACHIKAWA** Tokachikawa Daichi hotel

**SAPPORO** Mercure Hotel Sapporo

\*Note: Hotels subject to final confirmation. Should there be changes, customers will be offered similar accommodations as stated in this list.





# 9D6N Hokkaido Ice Breaking Adventure

**01 SINGAPORE ▶ CHITOSE**  
Meal on Board  
Our vacation begins with a pleasant flight from Singapore to the Land of the Rising Sun, [Japan](#).

**02 CHITOSE ▶ ASAHIKAWA**  
Dinner-Shabu Shabu  
The moment you touch down, a world of captivating wonders awaits. Begin your Hokkaido escapade at [Asahiyama Zoo](#), you'll meet about 150 kinds of animals that can survive in this challenging environment. The most popular exhibit is the Polar Bear Pavilion, where you can observe polar bears diving into a huge pool.  
Delve deeper into local culture at [Otokoyama Sake Brewing Museum](#), where introduces sake brewing culture as Japanese traditional industry and history of Otokoyama from 350 years.

**03 ASAHIKAWA ▶ ABASHIRI**  
Breakfast, Lunch-Yakiniku BBQ, Dinner-Hotel  
Embark on a journey to [Ginga Waterfall](#), where cascading waters create a mesmerizing spectacle amidst the winter landscape. Just a short distance away, [Ryusei Waterfall](#) beckons with its ethereal beauty, enchanting all who lay eyes upon it.

Brace yourself for an adrenaline – pumping adventure as you experience the exhilarating [Abashiri Ice Breaking activity](#) (available from 20 Jan~20 Mar), where you'll witness the sheer power of nature firsthand. Feel the exhilaration and power of nature as you sail through the icy landscape, surrounded by breathtaking views.



**04 ASAHIKAWA ▶ AKAN**  
Breakfast, Lunch-Grill seafood set, Dinner-Hotel  
Immerse yourself in the rich history of Hokkaido as you step into the [Abashiri Prison Museum](#), where intriguing stories of the region's past unfold. Journey to [Ryuhyokan](#), a unique museum dedicated to ice and the mystical Northern Lights, where you'll uncover the secrets behind these captivating phenomena. [Mt. Iou](#) awaits, offering awe-inspiring panoramic views of the surrounding volcanic landscape. End the day at [Akan Ainu Kotan](#), where the vibrant culture of the Ainu people comes alive through captivating displays and traditional performances.

**05 AKAN ▶ IKEDA**  
Breakfast, Lunch- Japanese set, Dinner-Hotel  
Awaken your taste buds and embark on a gastronomic adventure at [Washo Market](#), a culinary paradise brimming with fresh seafood and local delicacies. Indulge in Hokkaido's culinary treasures as you savor every bite. Discover tranquility at [Kushiro Shitsugen National Park](#), where nature's harmony invites peaceful contemplation. Admire the graceful dance of Japanese Cranes (Tanco, lit. "red head") a majestic sight at Tanco Crane Nature Park. Travel back in time to the historical town of [Ikeda](#), known for its charming wineries and warm hospitality. Take a tantalizing tour of [Ryugetsu Factory](#), where you'll witness the craftsmanship behind Hokkaido's renowned confectioneries.

**06 IKEDA ▶ KITAHIROSHIMA ▶ SAPPORO**  
Breakfast, Lunch, Dinner  
Embark on an unforgettable day at the [Northern Horse Park](#), where you'll forge a bond with these magnificent creatures through interactions and thrilling equestrian experiences. Embark on a shopping spree at [Kitahiroshima Outlet](#), where great deals await fashion enthusiasts. Stroll through the bustling streets of [Tanukikoji](#)

[Shopping Arcade](#), where an array of shops and boutiques cater to all your shopping desires. As the sun sets, savor a gala dinner, featuring delectable local cuisine that showcases Hokkaido's culinary mastery. Rest and rejuvenate with an overnight stay in Sapporo.

**07 SAPPORO**  
Breakfast  
Unleash your adventurous spirit on a free and easy day in Sapporo, the vibrant capital of Hokkaido.

**08 SAPPORO ▶ OTARU ▶ CHITOSE ▶ SINGAPORE**  
Breakfast, Lunch  
Pay homage to ancient traditions as you visit the serene [Hokkaido Shrine](#), a spiritual sanctuary nestled amidst nature's embrace. Lose yourself in the charming streets of [Otaru](#), renowned for its picturesque canal and quaint architecture. Relish the memories of your Hokkaido escapade as you return to Chitose, bidding farewell to this winter wonderland. Depart from Chitose with a heart full of enchantment, and carry the spirit of Hokkaido's beauty with you, forever ingrained in your memories.

**09 HOME SWEET HOME**  
Meal on Board  
We hope you enjoyed your vacation with EU Holidays and we look forward to seeing you again on your next trip.

Service Fee Guideline: (Based on 9D6N)  
• Tipping: JPY 9000

#### NOTE:

- The sequence of the itinerary, flight schedules and hotels are subject to change without prior notice in the event of unforeseen circumstances.
- During major events, accommodation may be relocated without prior notice.
- All pictures shown are for illustration purpose only.
- A minimum group size of 15 passengers is required for a confirmed departure. Additionally, for groups consisting of 20 or more passengers, a tour leader will be assigned.
- Tour is conducted in Mandarin unless otherwise stated.



## 行程亮点

### 旭川

- 旭川动物园
- 男山酒造

### 网走

- 流星瀑布
- 银河瀑布
- 网走破冰船
- 网走监狱博物馆
- 网走流冰馆
- 硫黄山

### 阿寒町

- 阿寒湖爱奴民俗村

### 釧路

- 釧路和商市场
- 釧路市丹顶鹤自然公园

### 池田

- 池田红酒工厂
- 十胜柳月工厂

### 十胜川

- 北国优骏公园
- 北广岛Outlet

### 札幌

- 狸小路商店街
- 北海道神宫

### 小樽

- 白色恋人巧克力博物馆
- 小樽运河

# 9天6晚 北海道破冰探险之旅



小樽运河

至3月20日期间进行的活动，您可以体验破冰船在网走附近的冰冻水域中航行的刺激和惊险，感受北海道冬季的震撼。

- **北广岛Outlet** - 购物中心，提供各种品牌商品以及优惠折扣，满足您的购物需求和享受购物的乐趣。
- **狸小路商店街** - 热闹繁忙的购物街，有超过150家流行服饰店，餐厅，纪念馆，等等供您选择。

## 04 网走 ▶ 阿寒町

早餐，烧烤海鲜定食午餐，饭店晚餐

- **网走监狱博物馆** - 是一座展示该地区历史的博物馆，了解监狱制度和囚犯生活的历史。
- **网走流冰馆** - 这个独特的博物馆致力于展示冰雪和极光的美丽景象。您可以欣赏冰雪艺术品、学习北极光的科学原理，并亲身体验冰雪带来的魅力和神秘感。
- **硫黄山** - 位于网走市附近的一座火山山脉，提供壮丽的景色和独特的地质特征。
- **阿寒湖爱奴民俗村** - 是一个能够了解爱努族文化和传统的地方。这个独特的博物馆致力于展示冰雪和极光的美丽景象。您可以欣赏冰雪艺术品、学习北极光的科学原理，并亲身体验冰雪带来的魅力和神秘感。

## 07 札幌

早餐

在北海道充满活力的首府札幌，释放您的冒险精神，在这个自由悠闲的日子里尽情享受吧！

## 08 札幌 ▶ 小樽 ▶ 新千岁 ▶ 新加坡

早餐，海鲜火锅套餐

最后一天，前往小樽游览，感受其独特的氛围和文化。

- **北海道神宫** - 是北海道最大的神宫之一。这个美丽的神社，被自然环绕着。您可以在这个宁静的地方感受到宗教氛围，并欣赏周围自然环境的美景。
  - **白色恋人巧克力博物馆** - 是一座洋溢着英伦气息的欧式古典城堡以及可买白色恋人巧克力饼干。
  - **小樽运河** - 也是小樽著名的观光胜地，运河旁有许多石砌仓库群。小樽步行街也有著名的北一硝子的玻璃饰品专卖，北果楼，咖啡馆，寿司，巧克力等
- 最后前往机场，告别日本，乘搭客机飞返新加坡。

## 09 甜蜜家园

机上用餐

希望您同欧美假期共享美丽的回忆，期待在下次旅行中再次见到您。

服务费: (9天6晚)  
• 每人9000日元

备注:

1. 行程顺序可能受到不可预测的情况或恶劣天气的情况下，将会更改或以其他景点替代行程。以确保旅程的顺畅，如有改动，恕不另行通知。
2. 在重大活动期间，住宿可能会搬迁，恕不另行通知。
3. 所有显示的图片仅用于说明目的。
4. 确认出发需要至少15名旅客的团体人数，20名以上旅客安排随团领队。
5. 导游全程以中文解说，除非另有说明。

## 01 新加坡 ▶ 新千岁

机上用餐

在新加坡樟宜机场集合，乘搭豪华客机飞往“日出之国”日本。

## 02 新千岁 ▶ 旭川

晚餐-涮涮锅

由导游接机后，前往旭川观光

- **旭川动物园** - 位于旭川市，是日本最著名的动物园之一。您可以观赏到各种珍稀动物，其中包括了一些非常有趣的动物展示和活动。
- **男山酒造** - 位于旭川市，这是一家酿造日本清酒的酒厂。您可以参观酒厂，了解当地的酿酒工艺和历史。

## 03 旭川 ▶ 网走

早餐，日式烧肉午餐，饭店晚餐。

- **流星瀑布** - 以其壮丽景色而闻名。您可以欣赏到瀑布流水飞溅的壮观景象。
- **银河瀑布** - 与流星瀑布相邻。它以其宽阔和美丽的瀑布景观而吸引游客。
- **网走破冰船** - 这是一项仅在1月20日

## 05 阿寒町 ▶ 釧路 ▶ 池田 ▶ 十胜川

早餐，日式套餐，饭店晚餐

- **釧路和商市场** - 是一个熙熙攘攘的市场，您可以品尝当地的美食和购买新鲜的海产品。
- **釧路市丹顶鹤自然公园** - 是一个保护区，供您观赏美丽的丹顶鹤。您可以近距离观察这种珍稀鸟类的生态行为，感受大自然的宁静与美丽。
- **池田红酒工厂** - 了解当地酿酒工艺和历史，并品尝他们酿造的著名葡萄酒，体验品味优质酒品的乐趣。
- **十胜柳月工厂** - 是一个糖果工厂，您可以参观并了解他们的著名甜点制作过程。

## 06 十胜川 ▶ 札幌

早餐，日式套餐，Gala dinner(螃蟹吃到饱)

- **北国优骏公园** - 是一个可以与马匹互动和享受马术活动的公园。您可以骑马、观看马术表演，体验与这些优雅动物亲密接触的乐趣。



9D7N

# CENTRAL JAPAN FAMILY FUN + THEME PARK

9天7晚 本州主题乐园亲子游

JPFFTW | Nov 2023 – Mar 2024

## COUNTRY FOCUSED



Feel the excitement in the air at the amazing theme parks of Japan and prepare for a trip full of fun for the whole family!



SCAN FOR  
DIGITAL COPY



OSAKA UNIVERSAL STUDIO SIGNAGE &  
TOKYO DISNEY SEA SHOW ON THE WATER



Wifi  
Router



PACE



Relaxed

Active



# HIGHLIGHTS

## TOKYO

- Disneyland

## KANAGAWA

- Yokohama Chinatown
- Yokohama Red Brick Warehouse
- Lake Ashinoko
- Owakudani Ropeway

## SHIZUOKA

- Nihondaira Yume Terrace
- Yaizu Fish Market
- Unagi Pai Factory Shunkado
- Hamamatsu City Museum of Musical Instruments

## KYOTO

- Kiyomizu-dera Temple
- Arashiyama Sagano Bamboo Grove
- Nishiki Market
- Gion Hanamikoji Street

## NARA

- Todaiji Temple
- Nara Park

## OSAKA

- Osaka Castle (photo stop)
- Universal Studios Japan
- Abenos Harukas

Service Fee Guideline:  
(Based on 9D7N)

- JPY9000 per person

### Notes:

- The sequence of the itinerary, flight schedules and hotels are subject to change without prior notice in the event of unforeseen circumstances.
- During major events, accommodation may be relocated without prior notice.
- All pictures shown are for illustration purpose only.
- A minimum group size of 15 passengers is required for a confirmed departure. Additionally, for groups consisting of 20 or more passengers, a tour leader will be assigned.
- Tour is conducted in Mandarin unless otherwise stated.

服务费: (9天7晚)

- 每人9000日元

### 备注:

1. 行程顺序可能受到不可预测的情况或恶劣天气的情况下, 将会更改或以其他景点替代行程。以确保旅程的顺畅, 如有改动, 恕不另行通知。
2. 在重大活动期间, 住宿可能会搬迁, 恕不另行通知。
3. 所有显示的图片仅用于说明目的。
4. 确认出发需要至少15名旅客的团体人数, 20名以上旅客安排随团领队。
5. 导游全程以中文解说, 除非另有说明。



## DELICACIES

### Meal Plan

7 Breakfasts, 4 Lunches, 4 Dinners

### Specialties

- Japanese Shabu Shabu
- Chinese Cuisine
- Kyoto Sumo Pot (Nabe)
- Unagi Set Dinner

## 4★ HOTELS

**TOKYO** Sunshine City Prince Hotel

**YAMANASHI** Ishiwa Onsen Hotel Shinko

**SHIZUOKA** Okura ACT City Hotel  
Hamamatsu

**KYOTO** Rihga Gran Kyoto

**OSAKA** Rihga Royal Hotel Osaka

\*Note: Hotels subjected to final confirmation. Should there be changes, customers will be offered alternative accommodation similar to this list.



KYOTO



# 9D7N Central Japan Family Fun + Theme Park

## 01 SINGAPORE ▶ NARITA ▶ TOKYO

Meal on Board, Japanese Shabu Shabu Dinner

Our vacation begins with a pleasant flight from Singapore to the Land of the Rising Sun, Japan. Upon arrival, transfer to hotel.

## 02 TOKYO

Breakfast  
**Disneyland**

(1 Day Passport Ticket 8:30~19:00).

It's a day of fun and excitement. From meeting Mickey Mouse to exploring whimsical lands like Fantasyland and Tomorrowland, Tokyo Disneyland is a must-visit destination for Disney fans and families looking for a day of unforgettable fun and entertainment.

\*Coach will back to hotel at 19:00. If pax wish to stay late, pax will need to make their own way back to hotel.

## 03 TOKYO ▶ YOKOHAMA ▶ FUJISAN

Breakfast, Chinese Cuisine Lunch, Dinner

This morning, we will travel to Yokohama area. First stop, visit the largest Chinatown in Japan - **Yokohama Chinatown**. Next, visit the iconic and sprawling **Yokohama Red Brick Warehouse**. Like many of the older building in the city, it dates to the late 19th century and now houses a variety of shops, cafes, restaurants & event spaces. Continue onwards, we will make a stop at beautiful **Lake Ashinoko** for an iconic view of Mt Fuji (sights of Mt Fuji is weather dependent). After that, take a **Owakudani Ropeway** (one-way ride) where you can enjoy views of the active, sulfuric hot spring sources of the Owakudani Valley along the way.

## 04 FUJISAN ▶ HAMAMATSU

Breakfast, Lunch, Unagi Set Dinner  
We will start our day at **Nihondaira Observatory**, an

astronomical observatory located on a hill overlooking Shimizu. Next, proceed on to the **Yaizu Fish Market**, a famous local fish market that draws plenty of crowds coming for their delicious specialties made with fresh fish of the day. After that, we will proceed to tour **Unagi Pie Factory** which is a dessert company's factory, a baking demonstration, a cafe & a sweet shop. Then, move on to **\*Hamamatsu City Museum of Musical Instruments**. It is the first and Japan's one and only municipal museum of musical instruments.

\*subject to the museum operation days. If closed, we will replace another attraction.

## 05 HAMAMATSU ▶ KYOTO

Breakfast, Kyoto Sumo Pot Lunch, Dinner

Start your day with a visit to **Kiyomizudera Temple**, a UNESCO World Heritage Site that afford visitors a nice view of the numerous cherry and maple trees that burst into colour during spring and fall. After that, continue to **Arashiyama Bamboo Grove** for a leisure walk in this mystical bamboo path, where you'll feel as though you have been transported to another realm as you stand amidst these soaring stalks of bamboo. Then, we will proceed to **Nishiki Market**. It offers an array of both fresh and preserved food. You can also find excellent cookware and elegant ceramic wares, condiments and paper goods. Lastly, proceed to Kyoto's most famous geisha district - **Gion**. The most popular area of Gion is **Hanami-koji Street** filled with shops, restaurants and ochaya (teahouses), where geiko (Kyoto dialect for geisha) and maiko (geiko apprentices) entertain.

## 06 KYOTO ▶ NARA ▶ OSAKA

Breakfast, Lunch  
This morning, transfer to Nara & visit the **Todaiji Temple** its large

temple roofs and pagoda towers that peek through the trees. A 15-metre-tall Buddha is also housed in this world's largest wooden building. Next, proceed to **Nara Park**. The most interesting feature of the park, especially for children, is its large population of semi-wild deer that roam the park. Feel free to feed these cute deer. After that, transfer to Osaka and have a photo stop at **Osaka Castle** - One of Japan's most famous landmarks. Continue, we will visit the tallest skyscraper in Japan - **Abeno Harukas** before heading back to the hotel.

## 07 OSAKA

Breakfast  
**Universal Studios Japan**

(1 Day Ticket 8:30~19:00)

Today is a day of fun and adventure as we visit Universal Studios Japan with its eight unique theme zones- The Wizarding World of Harry Potter, New York, San Francisco, Water world, Amity Village, Jurassic Park, Universal Wonderland and Hollywood.

\* Coach will back to hotel at 19:00. If pax wish to stay late, pax will need to make their own way back to hotel.

## 08 OSAKA ▶ KANSAI ▶ SINGAPORE

Breakfast, Meal on Board

Have some leisure time to enjoy the charm of Osaka, the 3<sup>rd</sup> most populous city in Japan. Bid farewell to this beautiful country as you transfer to the airport for your flight home.

## 09 HOME SWEET HOME

We hope you enjoyed your vacation with EU Holidays and we look forward to seeing you again on your next trip.





# 9天7晚 本州主题乐园亲子游

## 行程亮点

### 东京

- 迪斯尼乐园

### 神奈川

- 横滨中华街
- 红砖仓库群
- 芦之湖畔 (照相)
- 大涌谷地狱

### 静岡

- 日本平展望台
- 烧津鱼市场
- 滨松鳗鱼脆饼工厂
- 滨松乐器博物馆

### 京都

- 清水寺
- 岚山公园, 嵯峨竹林
- 锦市场
- 祇园花见小路通散步

### 奈良

- 东大寺
- 奈良公园

### 大阪

- 大阪城公园 (照相)
- 大阪影城
- 阿倍野Harukas

- **大涌谷地狱 (单程缆车)** - 箱根最有名的观光景点“大涌谷”。从展望台看大涌谷的景色非常震撼。荒凉的山体和喷发的烟雾演绎出独特的景观, 不愧曾被称为地狱谷。

- **祇园花见小路通散步** - 传统町家窗户皆为著名的红壳格子风格, 因而别具一番风情。

## 04 富士山 ▶ 滨松

早餐, 午餐, 鳗鱼饭晚餐

- **日本平展望台** - 可以从日本平惬意地眺望风景, 感受历史, 文化的价值。
- **烧津鱼市场** - 提到在烧津大受欢迎的美食场所, 当属烧津鱼市中心。这里分布着约60家店铺, 均以本地烧津的海鲜和水产加工品为中心。
- **滨松鳗鱼脆饼工厂** - 以鳗鱼派闻名全国的春华堂, 于2005年重新整修鳗鱼派工厂并开放民众自由参观, 是不少人会特别前往的知名景点。
- **滨松乐器博物馆\*** - 是日本第一个市级乐器博物馆。从1981年开始, 作为滨松市“创造音乐之城”的一部分而成立, 是根据博物馆法注册的博物馆设施。

\*如遇休息日则换其他景点。

## 06 京都 ▶ 奈良 ▶ 大阪

早餐, 午餐

- **奈良东大寺** - 东大寺是华严宗大本山, 也称为“金光明四天王护国之寺”, 佛寺是由信奉佛教的圣武天皇在728年大笔投资兴建, 距今约有1,200余年的历史。
- **奈良公园** - 是位于奈良县奈良市的城市公园。是国家级风景名胜区和著名的地方。
- **大阪城公园 (照相)** - 大阪城表之建筑, 城堡外拍照留念。
- **阿倍野展望台** - 高300米, 是日本最高的摩天大楼。它设有百货公司, 艺术博物馆, 酒店和观景台。

## 07 大阪

早餐

大阪影城

(1日券 8:30 ~ 19:00)

\*巴士将于19:00返回酒店。如您想逗留至晚上, 请自行返回酒店

## 05 滨松 ▶ 京都

早餐, 京都相扑火锅午餐, 晚餐

- **世界遗产-清水寺** - 清水寺是著名的赏枫及赏樱景点, 寺院的本堂被指定为国宝, 后于1994年被列入世界文化遗产名录。
- **岚山公园, 嵯峨竹林** - 位于日本京都的国家指定古迹 - 岚山。竹林小径长约500米, 穿过野宫神社往大河内山庄步行即可到达岚山竹林。
- **锦市场** - 是京都市区内一个规模比较大的特色集市, 汇集许多吃喝玩乐的特色小店, 非常值得一逛。

## 08 大阪 ▶ 关西 ▶ 新加坡

早餐, 机上用餐

早餐后, 您将有一些闲暇时间享受日本第三大人口最多的城市大阪的魅力。最后集合告别日本, 乘搭客机飞返新加坡。

## 09 甜蜜家园

希望您同欧美假期共享美丽的回忆, 期待在下次旅行中再次见到您。

## 01 新加坡 ▶ 成田 ▶ 东京

机上用餐, 日式涮涮锅晚餐

在新加坡樟宜机场集合, 乘搭豪华客机飞往“日出之国”日本。由导游接机后, 前往酒店休息。

## 02 东京

早餐

- **东京迪斯尼乐园陆地**

(1日券 8:30 ~ 19:00)

\*巴士将于19:00返回酒店。如您想逗留至晚上, 请自行返回酒店

## 03 东京 ▶ 横滨 ▶ 富士山

早餐, 中华料理午餐, 晚餐

- **横滨中华街** - 日本乃至亚洲最大的唐人街, 与神户南京町, 长崎新地中华街一起并称为日本的三大中华街。
- **红砖仓库群** - 建于明治末期至大正初期的仓库群, 做为象征横滨港发展的历史性建筑物, 尤其著名。如今, 红砖仓库聚集了时尚店铺, 餐厅和咖啡厅等类型商铺。
- **芦之湖畔 (照相)** - 芦之湖背倚着富士山。湖山相映, 不同的季节有不同的景致和情趣。



清水寺



9D7N

Charming Golden Route

HONSHU

9天7晚 迷人本州黄金路线

JPCGRW | Nov 2023 – Mar 2024

平成二十四年五月吉日建之  
平成二十六年二月初午建之  
平成二十六年八月吉日建之

平成十六年九月吉日建之  
平成二十年七月吉日建之

平成十八年三月吉日建之

平成十九年十月吉日建之  
平成二十年十一月吉日建之  
平成二十七年五月吉日建之  
平成二十八年六月吉日建之

平成十九年十月吉日建之  
平成二十年十一月吉日建之  
平成二十七年五月吉日建之  
平成二十八年六月吉日建之

平成十九年十月吉日建之  
平成二十年十一月吉日建之  
平成二十七年五月吉日建之  
平成二十八年六月吉日建之

平成十九年十月吉日建之  
平成二十年十一月吉日建之  
平成二十七年五月吉日建之  
平成二十八年六月吉日建之

平成十九年十月吉日建之  
平成二十年十一月吉日建之  
平成二十七年五月吉日建之  
平成二十八年六月吉日建之

平成十九年十月吉日建之  
平成二十年十一月吉日建之  
平成二十七年五月吉日建之  
平成二十八年六月吉日建之

平成十九年十月吉日建之  
平成二十年十一月吉日建之  
平成二十七年五月吉日建之  
平成二十八年六月吉日建之

平成十九年十月吉日建之  
平成二十年十一月吉日建之  
平成二十七年五月吉日建之  
平成二十八年六月吉日建之

平成十九年十月吉日建之  
平成二十年十一月吉日建之  
平成二十七年五月吉日建之  
平成二十八年六月吉日建之

COUNTRY  
FOCUSED

I WAS  
HERE!

All four seasons of Japan's 47  
prefectures is one bewildering,  
breathtaking & beautiful country  
that is like nowhere else.

FUSHIMI-INARI TEMPLE KYOTO

SCAN FOR  
DIGITAL COPY



Wifi  
Router



PACE

Relaxed

Active



# HIGHLIGHTS

## TOKYO

- Sensoji
- Nakamise Shopping Street

## KANAGAWA

- Hakone Shrine
- Lake Ashinoko

## YAMANASHI

- Lake Kawaguchi (cruise ride)
- Kachi Kachi Yama Ropeway

## MATSUMOTO

- Matsumoto Castle

## GIFU

- Shirakawago, Shiroyama Observatory Deck
- Sample Village Iwasaki

## KYOTO

- Fushimi Inari Shrine
- Kiyomizu Temple
- Higashiyama District
- Arashiyama Bamboo Grove
- Togetsu Bridge
- Sagano Scenic Railway Ride

## OSAKA & NARA

- Osaka Castle
- Shinsaibashi & Dotonbori
- Nara Todaiji Temple

## TOYOHASHI & SHIZUOKA

- Kodode Ooigawa
- Shimizu Fish Market
- Gotemba Premium Outlet

Service Fee Guideline:  
(Based on 9D7N)

- JPY9000 per person

### Notes:

- The sequence of the itinerary, flight schedules and hotels are subject to change without prior notice in the event of unforeseen circumstances.
- During major events, accommodation may be relocated without prior notice.
- All pictures shown are for illustration purpose only.
- A minimum group size of 15 passengers is required for a confirmed departure. Additionally, for groups consisting of 20 or more passengers, a tour leader will be assigned.
- Tour is conducted in Mandarin unless otherwise stated.

### 服务费: (9天7晚)

- 每人9000日元

### 备注:

1. 行程顺序可能受到不可预测的情况或恶劣天气的情况下, 将会更改或以其他方式景点替代行程。以确保旅程的顺畅, 如有改动, 恕不另行通知。
2. 在重大活动期间, 住宿可能会搬迁, 恕不另行通知。
3. 所有显示的图片仅用于说明目的。
4. 确认出发需要至少15名旅客的团体人数, 20名以上旅客安排随团领队。
5. 导游全程以中文解说, 除非另有说明。



## DELICACIES

### Meal Plan

7 Breakfasts, 6 Lunches, 4 Dinners

### Specialties

- Onsen Kaiseki Dinner
- Japanese Yakiniiku
- Kanidoraku Lunch Set
- Sahbu Shabu

## 4★ HOTELS

**NARITA** Hotel Nikko Narita

**FUJISAN** Tominoko Hotel

**TAKAYAMA** Hida Plaza Takayama Hotel

**KYOTO** Kyoto Shin Miyako Hotel

**OSAKA** Hotel Plaza Osaka

**TOYOHASHI** Hotel Associa Toyohashi

**TOKYO** Sunshine City Prince Hotel

\*Note: Hotels subjected to final confirmation. Should there be changes, customers will be offered alternative accommodation similar to this list.





# 9D7N Charming Golden Route Honshu



SHIRAKAWAGO, SHIROYAMA

you can enjoy shopping time as well as tasty snacks in Osaka. Next, make your way to the icon of Nara and one of Japan's most famous and historically significant temples, **Todaiji**. Finally, travel to Toyohashi for the night.

## 07 TOYOHASHI ▶ SHIZUOKA ▶ TOKYO

**Breakfast, Lunch**  
Enjoy an unique experience today in **Kadode Ooigawa** with their "Green Tea Tours". Through the tour's special effects, you get to imagine yourself being turned into "tea leaves", experiencing the process of "steaming", "rubbing", and "burning" inside the attractions of the tea factory. At the end of the tour, a special mini tea bowl will be presented to all tour participants. Next highlight of the day is a visit to the **Shimizu Fish Market**, a famous local fish market that draws plenty of crowds coming for their delicious specialties made with fresh fish of the day, alongside a variety of fresh seafood stores and restaurants. After enjoying your food, it's time to shop till you drop at the **Gotemba Premium Outlets**. Situated on an extensive site within view of Mt Fuji, this outlet carries a wide variety of international brands consisting of fashion, sport, food, household & electronics goods. End the day with a transfer back to Tokyo for overnight.

## 08 TOKYO ▶ NARITA/HANEDA ▶ SINGAPORE

**Breakfast, Meal on Board**  
It is free time to explore on your own till transfer to the airport. Bid farewell to this beautiful country as you transfer to the airport for your flight home.

## 09 HOME SWEET HOME

We hope you enjoyed your vacation with EU Holidays and we look forward to seeing you again on your next trip.

## 01 SINGAPORE ▶ NARITA/HANEDA

**Meal on Board**  
Our vacation begins with a pleasant flight from Singapore to the Land of the Rising Sun, Japan. Upon arrival, transfer to hotel. Free at your own leisure.

## 02 NARITA ▶ TOKYO ▶ HAKONE ▶ MT. FUJI

**Breakfast, Lunch, Onsen Kaiseki Dinner**  
Begin your tour at **Sensoji**, also known as Asakusa Kannon Temple, to see the city's oldest temple in its iconic vibrant colours. Along the way to the temple, you get to stroll on the **Nakamise shopping street** browsing its variety of traditional, local snacks and souvenirs. You may even catch a glimpse of Sky Tree from the Asakusa area! Next spot to visit is the **Hakone Shrine**, one of the most prestigious shrines in the Kanto region where locals pray for road safety, good luck and wishes to come true. Final tour of the day is to view **Lake Ashinoko** formed after a volcano's last eruption 3000 years ago. Get to see Mount Fuji on the backdrop if the sky is clear.

## 03 MT. FUJI ▶ MATSUMOTO ▶ TAKAYAMA

**Breakfast, Lunch, Dinner**  
After breakfast, enjoy a cruise ride on **Lake Kawaguchi** viewing Mount Fuji from the lake's northern shores follow by a cable car ride on **Mt Fuji Panoramic Ropeway** (Kachikachi-yama cable car)  
\*subject to weather condition for a 3-minute journey to the summit (1,075 metres) for a 360-degree panoramic view of Mount Fuji and Lake Kawaguchi. Next on the list for the day is a visit to the **Matsumoto Castle** (entrance included). Matsumoto Castle, also known as the "crow castle" due to its black exterior, is one of the most complete and beautiful among Japan's original castles. Designated as a National Historic Site in 1930, its five original structures were further among the National Treasures of Japan in 1952.

## 04 TAKAYAMA ▶ KYOTO

**Breakfast, Lunch, Japanese Yakuniku Dinner**  
More history and culture today as

you get to visit UNESCO World Heritage Site **Shirakawa-go** in the morning. The picture-postcard perfect beautiful village has the largest hamlet of gassho-zukuri style houses in Japan, an architectural style of the buildings is characterised by steep, thatched roofs shaped like hands in prayer. Slip into the past as you get to see the examples of the traditional way of life perfectly adapted to the environment. Thereafter, head up to the world-famous **Shirakawago Observatory Deck** to enjoy stunning views of the entire village of Shirakawa-go. Last activity of the day is a DIY session of making food samples in **Sample Village Iwasaki** at a food replica making workshop.

## 05 KYOTO ▶ OSAKA

**Breakfast, Kanidoraku Lunch Set, Dinner**  
Start your day with a visit to Kyoto **Fushimi Inari Shrine**, famous for its seemingly endless path of vibrant orange torii gates, making it one of the most impressive sights in Japan, follow by a visit to the **Kiyomizudera Temple**, a UNESCO World Heritage Site that display beautiful view of the numerous cherry and maple trees that burst into colour during spring and fall. Get to also explore **Higashiyama District**, whose streets are lined with many traditional small shops, cafes and restaurants from the past centuries. Next, take a leisurely walk in the mystical bamboo path in the **Arashiyama Bamboo Grove** as well as strolling on the **Togetsukyo Bridge**, another of Arashiyama's well-known central landmark. Finally, set off on the **Sagano Scenic Railway** ride from Kameoka Torokko to Saga Arashiyama Torokko where you get to enjoy the beautiful view of Hozugawa Ravine from season to season onboard the Sagano Romantic Train.

Note: In the event of unexpected suspension of service for Sagano Scenic Railway, it will be replaced with a visit to Kinkaku-ji.

## 06 OSAKA ▶ NARA ▶ TOYOHASHI

**Breakfast, Shabu Shabu Lunch**  
Photostop time at one of Japan's most famous landmark – the **Osaka Castle** in the morning before proceeding to **Shinsaibashi & Dotonbori** where



## 行程亮点

### 东京

- 浅草观音寺
- 仲见世商店街

### 神奈川

- 箱根神社
- 芦之湖

### 山梨

- 河口湖 (乘坐游船)
- 富士河口湖天上山公园 (卡嚓咔嚓缆车)

### 松本

- 松本城

### 岐阜

- 白川乡天守阁展望台
- 郡上八幡食品样本制作商店

### 京都

- 伏见稻荷大社
- 京都清水寺
- 东山区
- 嵯峨野竹林
- 渡月桥
- 嵯峨野观光铁道 (岚山小火车)

### 大阪 & 奈良

- 大阪城
- 心斋桥和道顿堀
- 奈良东大寺

### 丰桥 & 静岡

- 大井川绿茶之旅
- 静岡清水鱼市场
- 御殿场Premium Outlet

# 9天7晚 迷人本州黄金路线



京都东山区

自古就是山岳信仰一大圣地的箱根山上，曾为源赖朝，德川家康等许多武将所信奉，是具有历史的神社。

- 芦之湖 - 搭乘巴士游览芦湖边美丽风景。

- 渡月桥 - 渡月桥更为岚山的优雅锦上添花。传说如同月亮自此渡桥一般，所以龟山天皇将其命名为“渡月桥”。

- 嵯峨野观光铁道 (岚山小火车) - 游览小火车沿着保津川溪谷缓慢而优雅的行駛。搭乘小火车可以享受京都的四季风情。

备注: 如岚山小火车停驶进行维修，将由金阁寺补替。

## 03 富士山 > 高山

早餐, 午餐, 晚餐

- 河口湖 (乘坐游船) - 在富士五湖中数一数二的河口湖，坐在游船里畅游，该湖是欣赏富士美景的绝佳地点。
- 富士河口湖天上山公园 (卡嚓咔嚓缆车) - 乘坐缆车抵达山顶只需3分钟，在标高1,075米的展望台可以欣赏360度全景的富士山和河口湖全景，可以全景展望的最新吊舱运行。\*缆车视天气情况而定
- 松本城 (含门票) - 松本城始建于永正年间，最初的原型为深志城，是目前日本现存的最古老的五重六层式的国宝之城。

## 06 大阪 > 奈良 > 丰桥

早餐, 刷刷锅午餐

- 大阪城堡 (外观拍照) - 大阪城表之性建筑，城堡外拍照留念。
- 心斋桥和道顿堀 - 大阪的市中心你可以自由购物和享用地道小吃。
- 奈良东大寺 - 作为古奈良的历史遗迹的组成部分被列为世界文化遗产。

## 04 高山 > 京都

早餐, 午餐, 日式烤肉晚餐

- 白川乡合掌村 - 深入体会江户时代的民族生活风，这里的所有房屋皆是合掌形式建造被列入“世界文化遗产”。
- 白川乡天守阁展望台 - 站在展望台见到整个白川乡合掌村全景的美丽。
- 郡上八幡食品样本制作商店 - 亲自体验制作食品样本。

## 07 丰桥 > 静岡 > 东京

早餐, 午餐

- 大井川绿茶之旅 - 位于静冈县中心，自然景观丰富的大井川流域，源自南阿尔卑斯群山，沿大井川流域的两岸有丰富的自然美景与生态，这里也是静冈中部“骏河地区”的知名茶产地。
- 静岡清水鱼市场 - 日本最大海鲜市场之一，在这可以享用新鲜捕捉的海鲜。
- 御殿场Premium Outlet - 是日本最具规模商店也最多的OUTLET。

## 01 新加坡 > 成田/羽田

机上用餐

在新加坡樟宜机场集合，乘搭豪华客机飞往“日出之国”日本。由导游接机后，前往酒店休息。

## 02 成田 > 东京 > 箱根 > 富士山

早餐, 午餐, 怀石料理晚餐

- 浅草观音寺 - 参观最著名，最古老的寺庙从雷门到宝藏门之间有一狭长且古色古香的参道。
- 仲见世商店街 - 两侧商店整齐林立售卖特产小品。您可在浅草区远眺壮丽晴空塔。
- 箱根神社 - 757年由万卷上人创建在

## 05 京都 > 大阪

早餐, 蟹道乐午餐, 晚餐

- 伏见稻荷大社 - 以其中的“千本鸟居”著称。成百上千座朱红色鸟居构成一条到山顶的通道。
- 京都清水寺 - 清水寺是著名的赏枫及赏樱景点，寺院的本堂被指定为国宝，后于1994年被列入世界文化遗产名录。
- 东山区 - 清水寺外的购物街。
- 嵯峨野竹林 - 位于日本京都的国家指定古迹 - 岚山。竹林小径长约500米，穿过野宫神社往大河内山庄步行即可到达岚山竹林。

## 08 东京 > 成田/羽田 > 新加坡

早餐, 机上用餐

早餐后，你可以自由活动直到集合时间出发到机场。最后集合告别日本，乘搭客机飞返新加坡。

## 09 甜蜜家园

希望您同欧美假期共享美丽的回忆，期待在下次旅行中再次见到您。



# 9D7N HIDDEN GEMS OF SHIKOKU WAKAYAMA

9天7晚  
四国和歌山的隐藏宝石

JPSWKW | Winter Nov 2023 – Mar 2024

SCAN FOR  
DIGITAL COPY



**COUNTRY  
FOCUSED**

Immerse yourself in the hidden gems and let these lesser-known destinations enchant you with their unique charm and captivating experiences.

DOGO ONSEN BATH HOUSE

I WAS  
HERE!



Wifi  
Router



PACE

Relaxed

Active



# HIGHLIGHTS

## WAKAYAMA

- Nachi Falls
- Hashiguiwa
- Senjojiki

## TOKUSHIMA

- Naruto Whirlpools
- Awaodori Kaikan
- Iya Valley
- Iya Vine Bridge
- Oboke & Kobo (boat ride)

## KAGAWA

- Nakanoya Udon School
- Udon DIY Experience

## KOCHI

- Katsurahama
- Seasonal Fruit Picking
- Niyodo River

## EHIME (DOGO)

- Dogo Onsen Main Building
- Imabari Towel Museum

## OKAYAMA

- Kurashiki Bikan Historical Quarter
- Okayama Korakuen

## OSAKA

- Daisen Park Japanese Garden
- Osaka Castle
- Shinsaibashi & Dotonbori
- Rinku Premium Outlets

### Service Fee Guideline: (Based on 9D7N)

- JPY9000 per person

### Notes:

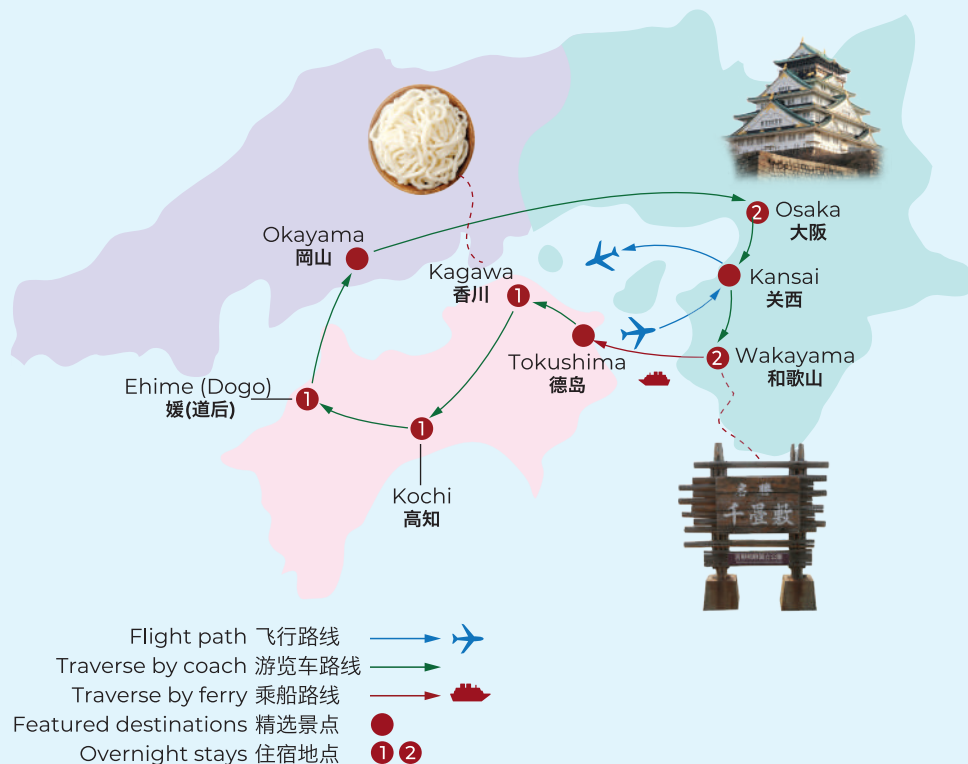
- The sequence of the itinerary, flight schedules and hotels are subject to change without prior notice in the event of unforeseen circumstances.
- During major events, accommodation may be relocated without prior notice.
- All pictures shown are for illustration purpose only.
- A minimum group size of 15 passengers is required for a confirmed departure. Additionally, for groups consisting of 20 or more passengers, a tour leader will be assigned.
- Tour is conducted in Mandarin unless otherwise stated.

### 服务费: (9天7晚)

- 每人9000日元

### 备注:

1. 行程顺序可能受到不可预测的情况或恶劣天气的情况下, 将会更改或以其他景点替代行程。以确保旅程的顺畅, 如有改动, 恕不另行通知。
2. 在重大活动期间, 住宿可能会搬迁, 恕不另行通知。
3. 所有显示的图片仅用于说明目的。
4. 确认出发需要至少15名旅客的团体人数, 20名以上旅客安排随团领队。
5. 导游全程以中文解说, 除非另有说明。



## DELICACIES

### Meal Plan

7 Breakfasts, 5 Lunches, 6 Dinners

### Specialties

- Wakayama Cuisine
- Japanese Kaiseki
- Okayama Cuisine
- Crab Meal

## 4★ HOTELS

WAKAYAMA Wakayama Marina City Hotel

TOKUSHIMA Hotel Reomanomori Ooedo Onsen

KOCHI Nikko Hotel Kochi

EHIME (DOGO ONSEN) Hotel Okudogo Ichiyu no Mori

OSAKA Sheraton Miyako Hotel

\*Note: Hotels subjected to final confirmation. Should there be changes, customers will be offered alternative accommodation similar to this list.



NARUTO WHIRLPOOL



# 9D7N Hidden Gems Of Shikoku Wakayama

## 01 SINGAPORE ▶ KANSAI ▶ WAKAYAMA

Meal on Board

Our vacation begins with a pleasant flight from Singapore to the Land of the Rising Sun, Japan. Upon arrival, head back to your hotel for a well-deserved rest.

## 02 WAKAYAMA

Breakfast, Lunch, Wakayama Cuisine Dinner

This morning marks the actual start of our Japan tour with a visit to Japan's tallest waterfall - **Nachi Falls**. Designated as World Heritage in 2004, the scenery with its water falling through primeval forest looks divine as though gods reside in this area. Next, proceed to **Hashiguiwa**, is a stunning coastal rock formation located in Japan, known for its unique shape resembling a bridge. It offers breathtaking views of the surrounding ocean and is a popular spot for nature enthusiasts and photographers alike. Continuing onwards, we will visit the **Senjojiki**, so named because its vastness made people recalling a thousand tatami mats being spread out.

## 03 WAKAYAMA ▶ TOKUSHIMA ▶ KAGAWA

Breakfast, Lunch, Dinner

Today, we will travel to Tokushima by ferry. First, visit one of the world's 3 largest whirlpools, **Naruto Whirlpool** (by cruise). Large whirlpools occur here on 4 intervals per day between Awaji island and Magozaki in Naruto city due to difference in water level during the inflow and outflows of tides. Next, proceed on to **Awaodori Kaikan**, a museum in the city of Tokushima where visitors can learn about Awa Odori.



KURASHIKI BIKAN HISTORICAL QUARTER

## 04 KAGAWA ▶ KOCHI

Breakfast, Lunch, Dinner

Enjoy some hands on activity in the morning at **Nakanoya Udon School DIY Experience** where you get a chance to experience DIY Udon making and then tasting the delicious Udon made by yourselves. Next, we will past the scenic **Iya Valley** area known for its dramatic mountain valleys while travelling to **Iya Vine Bridge** which is located in Nishiyama Village in Miyoshi City. Built from actinidia arguta vines amassing a total of five tons, this bridge is among the 3 most peculiar bridges in Japan. After that, proceed to **Oboke & Koboake by boat**. Sit back, relax and enjoy a 30 minutes ride through the gorge with a one-of-a-kind sights to be appreciated in all four seasons, with snow-capped mountains in the winter, wild cherry trees coloring the hillside in spring, fresh green leaves in summer, and the warmly colored leaves of autumn. (Subject to weather conditions).

## 05 KOCHI ▶ EHIME (DOGO)

Breakfast, Lunch, Japanese Kaiseki Dinner

Today, we will visit **Katsurahama**, known for its beautiful white sand, crystal-clear waters, and stunning views of the Pacific Ocean. More hands-on experience next with the **Seasonal Fruit Picking** (depending on the season & weather) activity. One of the three major rivers of Shikoku - the **Niyodo River**, which also includes the Shimanto and Yoshino Rivers, is next on the list. Finally, we will move to **Dogo Onsen Main Buidling** (outside) which is the spirited away bathhouse for real, the onsen that inspired the anime movie "Spirited Away" (千と千尋).



NACHI FALLS ©JNTO

## 06 EHIME (DOGO) ▶ OKAYAMA ▶ OSAKA

Breakfast, Okayama Cuisine Lunch, Dinner

This morning itinerary is a visit to the largest towel producing city in Japan Imabari and tour its unique **Imabari Towel Museum**. Next, we will move to **Kurashiki Bikan Historical Quarter**, a historical area with classic architecture situated along a canal with shops, eateries & galleries. Continue onwards, we will pay a visit at **Okayama Korakuen**, one of the Three Great Gardens of Japan, along with Kenroku-en and Kairaku-en before transferring back to Osaka.

## 07 OSAKA

Breakfast, Crab Dinner

After breakfast, proceed to **Daisen Park Japanese Garden**, showcasing the beauty of traditional Japanese landscaping with meticulously manicured gardens and charming tea houses. Immerse yourself in the serene ambiance and indulge in a delightful matcha tea experience. **Shinsaibashi & Dotonbori** for some shopping and enjoy eating your way into the heart of Osaka. After that, we will have a crab dinner together before heading back to hotel.

## 08 OSAKA ▶ KANSAI ▶ SINGAPORE

Breakfast, Meal on Board

After breakfast, proceed to one of the Japan's most famous landmark **Osaka Castle** for some photo. Then, proceed to **Rinku Premium Outlet** for the last minute shopping before transfer to the airport for your flight home. Bid farewell to this beautiful country and transfer to the airport for your flight home.

## 09 HOME SWEET HOME

We hope you enjoyed your vacation with EU Holidays and we look forward to seeing you again on your next trip.



# 9天7晚 四国和歌山的隐藏宝石

## 行程亮点

### 和歌山

- 那智瀑布
- 橋杭岩
- 千疊敷

### 德岛

- 鸣门漩涡
- 阿波舞会馆
- 祖谷溪谷
- 祖谷蔓桥
- 大步危小步危 (觀光船)

### 香川

- 中野乌冬面学校

### 高知

- 桂浜
- 摘水果
- 仁淀川

### 爱媛 (道后)

- 道后温泉本馆
- 今治毛巾博物馆

### 岡山

- 仓敷美观地区
- 岡山后乐园

### 大阪

- 大仙公园日本庭园
- 大阪城
- 心斋桥和道顿堀
- 临空三井奥特莱斯



心斋桥和道顿堀

- **阿波舞会馆** - 「阿波舞」是四国地方德岛县的传统艺术活动, 约有400余年历史, 而「阿波舞会馆」就是介绍及体验阿波舞的地方。到此绝对不能错过世界有名舞蹈的观摩。

## 04 香川 ▶ 高知

早餐, 午餐, 晚餐

出发前大家在酒店周边的游园地游玩后出发去

- **中野乌冬面DIY** - 体验亲手制作乌冬面。
- **祖谷溪谷** - 是一段位在日本德岛县三好市祖谷川沿岸的峡谷被列为德岛88景, 也与岐阜县的白川乡, 宫崎县的椎叶村一同被列为日本三大秘境。
- **奥祖谷藤蔓桥** - 坐落在德岛县的吊桥, 据说在800年前建造, 由藤蔓编织而成, 为日本三大奇桥之一。在此建有两条并列的蔓桥, 分别是“男桥”和“女桥”, 因此通称为“夫妇桥”大步危小步危**峡游船** - 乘搭大约30分钟的大步危峡游船近观清澈的溪流和大步危峡一年四季不同的美景。

## 05 高知 ▶ 爱媛 (道后)

早餐, 午餐, 怀石料理晚餐

- **桂浜** - 是位于日本高知市的一片风景如画的沙滩, 以其洁白的沙滩、清澈的海水和壮丽的夕阳景色而闻名, 是人们享受海滩和大自然之美的理想目的地。
- **摘水果体验** - 视天气和季节而决定
- **仁淀川** - 仁淀川是水质日本第一的一级河流, 又称为奇蹟清流。
- **道后温泉本馆 (外观)** - 宫崎骏经典动画电影《千与千寻》原型温泉, 是其灵感来源。道后温泉本馆是日本最古老的道后温泉的标志性建筑。

## 06 爱媛 (道后) ▶ 岡山

早餐, 岡山料理午餐, 晚餐

- **今治毛巾博物馆** - 全球首座融合毛巾与艺术的毛巾博物馆。这里除了展示, 销售质地细腻的毛巾制品和艺术作品外, 还能参观制程。
- **仓敷美观地区** - 以仓敷川为中心的风景名胜区仓敷美观地区, 在17世纪中叶江户时代初期被指定为幕府直辖的“天领”。
- **岡山后乐园** - 日本三大名园之一, 获得米其林3星级评价的特别庭园。是武士权力象征之一, 与金泽市兼六园, 水户市偕乐园并称为日本三大名园。

## 07 岡山

早餐, 螃蟹晚餐

- **大仙公园日本庭园** - 在大仙公园的日本庭园中, 您可以体验抹茶。沉浸在传统的茶道文化中, 品尝香浓的抹茶, 感受它独特的口感和仪式感

## 08 大阪 ▶ 关西 ▶ 新加坡

早餐, 机上用餐

- **大阪城 (外观拍照)** - 大阪城表之性建筑, 城堡外拍照留念。
- **临空三井奥特莱斯** - 您可以在这里尽情享受购物的乐趣直到集合时间出发到机场。最后集合告别日本, 乘搭客机飞返新加坡。

## 09 甜蜜家园

希望您同欧美假期共享美丽的回忆, 期待在下次旅行中再次见到您。

## 01 新加坡 ▶ 关西 ▶ 和歌山

机上用餐

在新加坡樟宜机场集合, 乘搭豪华客机飞往“日出之国”日本。由导游接机后, 前往和歌山入住酒店。

## 02 和歌山

早餐, 午餐, 和歌山料理晚餐

- **那智瀑布** - 日本最高的瀑布。2004年, 此地被列入世界文化遗产名单。从悬崖直泻而下的磅礴水势, 隐然有神明寄居于此之貌。
- **橋杭岩** - 是日本的一座壮观的海岩景观, 其巨大的石头形状独特, 为游客呈现出一幅令人叹为观止的自然景观画面。
- **千疊敷** - 看起来像是叠了上千个叠席 (榻榻米) 而得名。千疊敷是由怒涛侵蚀而形成的阶梯式铺石地。

## 03 和歌山 ▶ 德岛 ▶ 香川

早餐, 午餐, 晚餐

- **鸣门漩涡 (乘船)** - 位于淡路岛和鸣门市的孙崎之间的大漩涡, 而它是由于潮汐的潮起潮落造成的。被誉为世界三大漩涡之一, 是您不容错过的绝妙体验。



# 9D7N UNVEILING TREASURES OF TOHOKU

## 9天7晚 探秘东北风情

JPNSTW | Nov 2023 – Mar 2024

### COUNTRY FOCUSED

I WAS  
HERE!

SCAN FOR  
DIGITAL COPY



Journey to the Enchanting Northeast:  
Exploring the Beauty of Northern Japan  
through Tohoku. Let this charm captivate  
your heart and leave an indelible mark on  
your travel adventures.

HIROSAKI CASTLE



Wifi  
Router





# HIGHLIGHTS

## AOMORI

- Hirosaki Park
- Hirosaki Castle (outside)
- Mt Hakkoda Ropeway
- Nebuta Museum
- Wrasse(entrance)
- Aomori Prefecture Tourism Information Center ASPAM
- Lake Towada

## IWATE

- Hanamaki Onsen
- Chūson-ji Temple
- Koiwai farm
- Morioka Handcrafts Village

## MIYAGI

- Sendai City
- Shiogama Fish Wholesale Market
- Matsushima cruise
- Aobayama Park

## YAMAGATA

- Ginzan Onsen street
- Zao Ropeway

## FUKUSHIMA

- Goshikinuma Ponds

## TOCHIGI

- Lake Chūzenji
- Nikko Toshogu Shrine

Service Fee Guideline:  
(Based on 9D7N)

- JPY9000 per person

### Notes:

- The sequence of the itinerary, flight schedules and hotels are subject to change without prior notice in the event of unforeseen circumstances.
- During major events, accommodation may be relocated without prior notice.
- All pictures shown are for illustration purpose only.
- A minimum group size of 15 passengers is required for a confirmed departure. Additionally, for groups consisting of 20 or more passengers, a tour leader will be assigned.
- Tour is conducted in Mandarin unless otherwise stated.

### 服务费: (9天7晚)

- 每人9000日元

### 备注:

1. 行程顺序可能受到不可预测的情况或恶劣天气的情况下, 将会更改或以其他景点替代行程。以确保旅程的顺畅, 如有改动, 恕不另行通知。
2. 在重大活动期间, 住宿可能会搬迁, 恕不另行通知。
3. 所有显示的图片仅用于说明目的。
4. 确认出发需要至少15名旅客的团体人数, 20名以上旅客安排随团领队。
5. 导游全程以中文解说, 除非另有说明。

# DELICACIES

## Meal Plan

7 Breakfasts, 7 Lunches, 4 Dinners

## Specialties

- Aomori Senbei Jiru Nabe
- Sendai Gyutan Dinner
- Utsunomiya Gyoza DIY Lunch
- Shabu Shabu

# 4★ HOTELS

**AOMORI** Daiwa Roynet

Hotel Aomori

**IWATE** Appikogen ski resort

**IWATE** Hanamaki Onsen Hotel  
**MIYAGI** Sendai Metropolitan Hotel

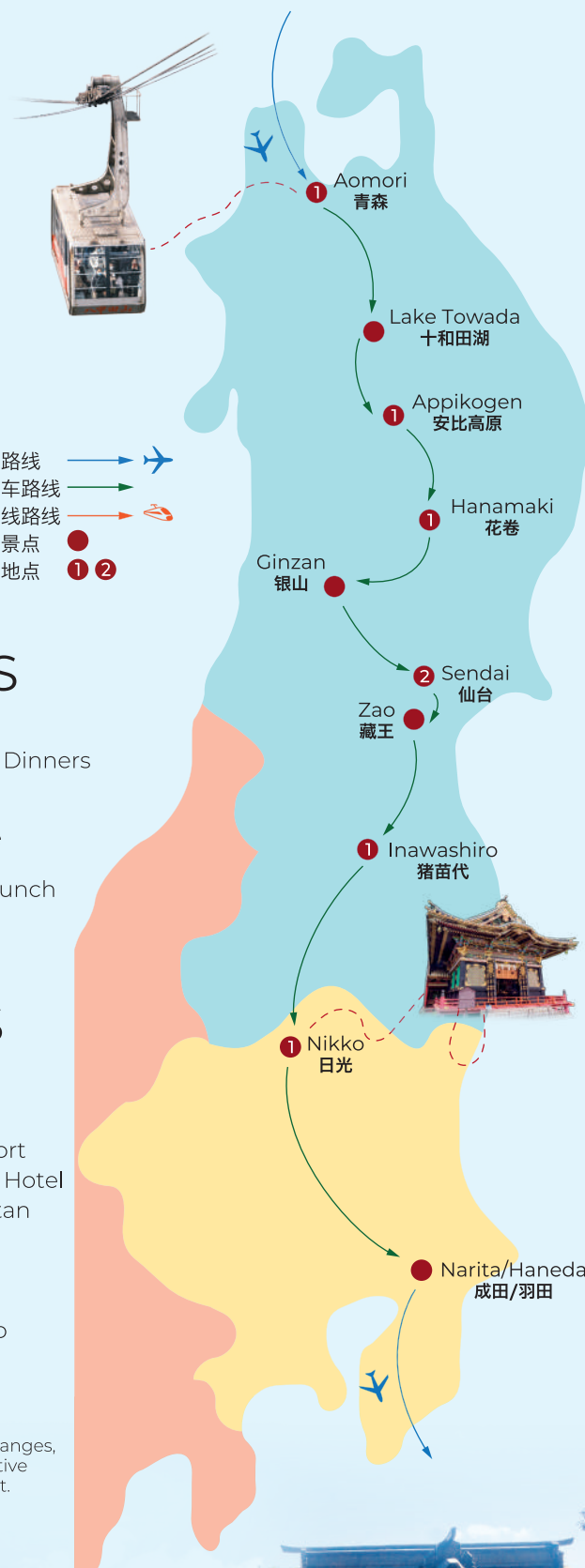
**FUKUSHIMA** Hotel Listel

Inawashiro

**TOCHIGI** Kinugawa Kanko Hotel

\*Note: Hotels subjected to final confirmation. Should there be changes, customers will be offered alternative accommodation similar to this list.

YAMADERA





# 9D7N Unveiling Treasures Of Tohoku

## 01 SINGAPORE ▶ AOMORI

Meal on Board

Our vacation begins with a pleasant flight from Singapore to the Land of the Rising Sun, Japan.

## 02 AOMORI

Lunch, Dinner

Upon arrival, pick up and proceed to **Hirosaki Park**. It is a place commonly visited by the locals looking for relaxation. There are a few other sites of interest inside Hirosaki Park, including the **Hirosaki Castle** - One of Japan's most beautiful castles. Next, we will proceed to Mt Hakkoda Ropeway. It is a set of volcanic peaks included among Japan's 100 Famous Mountains. Enjoy a very different landscape as the leaves change colors in fall. Lastly, we will pay a visit to **Nebuta Museum Warrase**. It is a facility that introduces the history and charms of the Aomori Nebuta Festival. At the museum you can experience every aspect of the festival.

## 03 AOMORI ▶ LAKE TOWADA ▶ APPIKOGEN

Breakfast, Lunch, Dinner

This morning, we will proceed to The Landmark of Aomori - **ASUPAMU**. The unique shape of the 76-meter-high, 15-story building is said to represent the initial "A" of Aomori. It is an information center, equipped with a souvenir corner, Japanese cuisine, cafes, and a movie hall. Nature has a way of surprising us, and due to ever-changing weather conditions, the **Hakkoda**

**Mountains ropeway** might take us on an alternative route. But fear not, as you'll witness the breathtaking beauty of **Lake Towada**. Capture the serenity of this shimmering lake through your lens. End the day by retreating to the ski resort.

## 04 APPIKOGEN ▶ HANAMAKI

Breakfast, Lunch, Dinner

Enjoy free time at the ski resort. Our journey continues with a transfer to **Koiwai Farm**, where nature's beauty and rural traditions intertwine. Next, prepare to be inspired by the **Morioka Handcrafts Village**. Witness the skilled artisans at work, creating exquisite handicrafts that reflect the region's rich cultural heritage. Take home a piece of their craftsmanship, a tangible reminder of your journey through Hanamaki. After that, transfer to **Hanamaki Onsen** - widely known in Japan as a hot spring resort in northern Tohoku.

## 05 HANAMAKI ▶ GINZAN ▶ SENDAI

Breakfast, Lunch, Dinner

Today, we will start our journey from UNESCO World Heritage Site & one of the premier treasures of Heian Buddhist art in East Japan - **Chuson-ji Temple**. Next, **Ginzan Onsen street** beckons, a hidden gem nestled in a picturesque valley. Stroll through this charming town, adorned with traditional wooden ryokans and mesmerizing hot springs. Our journey continues as we transfer to Sendai city, enjoy shopping & gourmet in **Sendai City downtown**.

## 06 SENDAI

Breakfast, Lunch, Dinner

After breakfast, we will proceed to **Shiogama Fish Wholesale Market** - one of Japan's most important fishing ports and one of the busiest fish processing centers in the country. Indulge in a **Matsushima cruise**, where the ethereal beauty of the islands and the calm waters of Matsushima Bay create a scene straight out of a painting. Next proceed to **Aobayama Park**, where lush peaceful walking trails, you may take in panoramic views of the cityscape from the observation deck.

## 07 SENDAI ▶ ZAO ▶ INAWASHIRO

Breakfast, Lunch, Dinner

From Sendai, venture towards Zao, a winter wonderland famous for its Snow Monsters. Ascend the **Zao Ropeway** and prepare to be greeted by a surreal landscape. Towering trees adorned with glistening ice and snow transform into magnificent creatures, captivating the imagination of all who behold them. Nature's artistry awaits at the **Goshikinuma Ponds**. Marvel at the vivid hues of these mystical lakes, each reflecting a different shade of blue or green. Capture the tranquility and be inspired by the harmonious blend of colors, a testament to the raw beauty of the Tohoku region.

## 08 INAWASHIRO ▶ NIKKO

Breakfast, Lunch

Our journey takes us to Nikko, a World Heritage site renowned for its historical treasures. Discover the awe-inspiring **Nikko Toshogu Shrine**, a shrine dedicated to the legendary shogun Tokugawa Ieyasu. One of the most important religious sites in Japan and is located in the forests of Tochigi. Find solace in the serene beauty of **Lake Chūzenji**. As you stand on its shores, surrounded by towering mountains.

## 09 NIKKO ▶ NARITA/HANEDA ▶ SINGAPORE

Breakfast, Meal on Board

After breakfast, bid farewell to this beautiful country as you transfer to the airport for your flight home. We hope you enjoyed your vacation with EU Holidays and we look forward to seeing you again on your next trip.



HITACHI SEASIDE PARK



# 9天7晚 探秘东北风情

## 行程亮点

### 青森

- 弘前公园
- 八甲山 (缆车)
- NEBUTA之家 (入场)
- ASUPAMU 观光物产馆
- 十和田湖畔

### 岩手

- 小岩井牧场
- 盛冈手工艺之村
- 花卷温泉
- 平泉中尊寺金色堂 - 世界遗产

### 山形

- 银山温泉
- 藏王缆车

### 宫城

- 塩釜海鲜市场
- 仙台商业区
- 松岛游览船- 日本三景
- 仙台青叶公园

### 福岛

- 五色沼泽湖群

### 栃木

- 中禅寺湖畔
- 东照宫-世界遗产



## 01 新加坡 ▶ 青森

机上用餐

在新加坡樟宜机场集合，乘搭豪华客机飞往“日出之国”日本。

## 02 青森

午餐 - 日式套餐，晚餐 - 青森煎饼汤料理

- **弘前公园** - 在这里可享受随四季变化的景色，可远眺壮观的弘前城。
- **NEBUTA之家(入场)** - 这是一个介绍青森睡魔节的历史和魅力的设施。随着参观著名的灯笼博物馆，了解NEBUTA节庆历史和文化。

## 03 青森 ▶ 十和田湖 ▶ 安比高原

早餐，午餐 - 日式套餐，饭店晚餐

- **观光物产馆 - ASUPAMU** - 这座76米高，15层的建筑的独特形状据说代表了青森最初的“A”。青森地标大楼，展示青森县的观光和特产，您可以购买当地的特色产品。
- **八甲山** - 乘坐缆车游览八甲山，欣赏壮丽的自然风景(若因天气原因无法搭乘，将以其他行程替代)
- **十和田湖(照相)** - 是代表东北的风景秀丽的，非常受欢迎的名所。在游船远眺的之色更让人赞不绝口，口口相传。

## 04 安比高原 ▶ 花卷温泉

早餐，午餐，饭店晚餐  
在滑雪场自由活动

- **小岩井牧场** - 参观迷人的农场，品尝新鲜的乳制品和农场产的美食。
- **盛冈手工艺之村** - 展示盛冈地区的传统手工艺品和文化。
- **花卷温泉** - 岩手最大的玫瑰园及宫泽贤治设计的日晷花坛等值得造访的景点。

## 05 花卷温泉 ▶ 银山 ▶ 仙台

早餐，午餐 - 日式套餐，晚餐 - 仙台特色牛舌料理

- **平泉中尊寺金色堂** - 是日本岩手县平泉世界文化遺產中的熱門景點，為天台宗東北大本山寺院，至今已有超過千年歷史。东日本首屈一指的平安佛教美术宝库。
- **仙台商业区** - 享受购物和美食
- **银山温泉** - 拥有仿佛穿越时空般怀旧的景色。在银山川的两岸木造温泉旅馆林立的温泉街，充满怀旧的日本情趣。宛如电影《千与千寻》的场景一般。

## 06 仙台

早餐，午餐 - 牡蛎特色餐，晚餐 - 日式烤肉

- **塩釜海鲜市场** - 是日本寿司店密度最高的地方。市场内每天都有将近140个摊位摆摊营业，销售各种新鲜水产以及从邻近的盐釜港卸货的干货和食品。
- **日本三景 - 松岛游览船** 松岛是日本著名的景点之一，乘坐松岛游览船，欣赏宏伟的岩石和壮丽的海岸线，感受大自然的魅力。

- **仙台青叶公园** - 是一处美丽的城市公园，以其宽阔的草坪和悠闲的氛围而受到游客的喜爱。您可以在公园中散步、休息，欣赏花草树木和美丽的景色，放松身心。

## 07 仙台 ▶ 藏王 ▶ 猪苗代

早餐，午餐 - 日式套餐，饭店晚餐

- **藏王缆车** - 冬季位树冰观赏胜地，您可以欣赏到壮观的树冰景象，这是在寒冷季节中形成的自然奇观。
- **五色沼泽湖群** - 是一系列位于日光的湖泊，每个湖泊都呈现出不同的颜色，包括蓝色、绿色和紫色等。这些湖泊的颜色变化和景观令人着迷，给人一种神秘的感觉。

## 08 猪苗代 ▶ 日光

早餐，午餐 - 日式套餐，饭店晚餐

- **东照宫** - 这座日光神社和寺院是联合国教科文组织的世界遗产地，拥有装饰精美的雕刻结构和宏伟的建筑，是日光最重要的寺庙之一
- **中禅寺湖畔** - 您可在这里拍摄美丽的照片，欣赏湖光山色，享受宁静的氛围。

## 09 日光 ▶ 成田/羽田 ▶ 新加坡

早餐，机上用餐

最后集合告别日本，乘搭客机飞返新加坡，希望您同欧美假期共享美丽的回忆，期待在下次旅行中再次见到您。



# 9D6N TATEYAMA KUROBE ALPINE ROUTE



## 9天6晚 立山黑部雪山墙之旅

JPTYMS | Apr - Jun 2024

SCAN FOR  
DIGITAL COPY



**COUNTRY  
FOCUSED**



Inspiring adventure through unforgettable alpine route. Marvel at the breathtaking views of the "Snow Wall Corridor" with refreshing alpine air this paradise.

TATEYAMA ALPINE ROUTE SNOW WALL





# HIGHLIGHTS

## NAGOYA

- Oasis 21
- Gujo Food Sample DIY

## GIFU

- Gero Onsen
- Shirakawago
- Wada House (entrance)
- Tsumago-Juku
- Enakyo Cruise

## ISHIKAWA

- Higashi Chaya
- Kenrokuen Garden

## TOYAMA

- Shinminato Fish Port Auction
- Hotaruika (Firefly Squid) Museum
- Tateyama Kurobe Alpine Route\*

## NAGANO

- Matsumoto Castle
- Daio Wasabi Farm

## KYOTO & OSAKA

- Fushimi Inari Shrine
- Kinkakuji
- Dodonburi, Shinsaibashi

### Service Fee Guideline:

- (Based on 9D6N)
- JPY9000 per person

### Notes:

- The sequence of the itinerary, flight schedules and hotels are subject to change without prior notice in the event of unforeseen circumstances.
- During major events, accommodation may be relocated without prior notice.
- All pictures shown are for illustration purpose only.
- A minimum group size of 15 passengers is required for a confirmed departure. Additionally, for groups consisting of 20 or more passengers, a tour leader will be assigned.
- Tour is conducted in Mandarin unless otherwise stated.

### 服务费: (9天6晚)

- 每人9000日元

### 备注:

1. 行程顺序可能受到不可预测的情况或恶劣天气的情况下, 将会更改或以其他景点替代行程。以确保旅程的顺畅, 如有改动, 恕不另行通知。
2. 在重大活动期间, 住宿可能会搬迁, 恕不另行通知。
3. 所有显示的图片仅用于说明目的。
4. 确认出发需要至少15名旅客的团体人数, 20名以上旅客安排随团领队。
5. 导游全程以中文解说, 除非另有说明。



## DELICACIES

### Meal Plan

6 Breakfasts, 6 Lunches, 4 Dinners

### Specialties

- Katsudon Set
- Yakimiku set
- Special Set with Crab
- Sumo Hot Pot
- Japanese BBQ Buffet

## 4-5★ HOTELS

**GERO ONSEN** Yamagataya 湯宿

**MATSUMOTO** Tateyama Prince Hotel 立山黑部王子大饭店

**TOYAMA** Toyama Excel Hotel Tokyu 富山エクセルホテル東横

**KANAZAWA** Kanazawa Tokyu Hotel 金泽东横酒店

**GIFU** Gifu Miyako Hotel 岐阜美咲酒店

**OSAKA** Sheraton Miyako Osaka 大阪美咲酒店

\*Note: Hotels subjected to final confirmation. Should there be changes, customers will be offered alternative accommodation similar to this list.



KENROKU-EN GARDENS



# 9D6N Tateyama Kurobe Alpine Route

## 01 SINGAPORE ▶ NAGOYA

Meal on Board

Our vacation begins with a pleasant flight from Singapore to the Land of the Rising Sun, Japan.

the river can also be enjoyed during the walking trail (*WASABI Ice-cream at own expenses*).

dinner, take advantage of the evening to explore Kanazawa's night view.

## 02 NAGOYA ▶ GERO ONSEN

Lunch-Katsudon set, Dinner-Hotel  
Upon arrival, proceed to the heart of the city to discover the futuristic delights of **Nagoya Oasis 21**, a modern commercial complex. From the observation deck, you'll be treated to a stunning panoramic view of Nagoya, with the iconic **Nagoya TV Tower** majestically standing tall among the city skyline. Visiting the revered **Atsuta Shrine**, where you can immerse yourself in its serene atmosphere and rich cultural heritage. End the day with staying in **Gero Onsen** - One of the 3 major hot spring village in Japan.

## 04 MATSUMOTO ▶ TATEYAMA KUROBE ALPINE ROUTE ▶ TOYAMA

Breakfast, Lunch-Japanese set, Dinner-Yakiniku set  
Embark on a thrilling adventure along the **Tateyama Kurobe Alpine Route**, a unique and spectacular journey through the stunning Northern Japan Alps. Traverse cable cars, trolley buses, and a ropeway as you explore this awe-inspiring route. Don't miss the chance to witness the majestic **Snow corridor**, with walls reaching up to 20 meters high.

Typically accessible from mid-April to late May.

Immersing yourself in the awe-inspiring beauty of natural wonders and dramatic mountain landscapes.

## 03 GERO ONSEN ▶ MATSUMOTO

Breakfast, Lunch-Japanese set, Dinner-Hotel  
After breakfast, take a small walk at beautiful **Gero Onsen street**. Proceed to visit the **Matsumoto Castle**, also known as the "crow castle" due to its black exterior. It's one of the most complete and beautiful among Japan's original castles. Designated as a National Historic Site in 1930, its five original structures were further among the National Treasures of Japan in 1952. Next, we will visit the **Daio Wasabi Farm** one of Japan's largest wasabi farms. An idyllic scene of old-fashioned, wooden water wheels alongside

## 05 TOYAMA ▶ KANAZAWA

Breakfast, Lunch-special set with crab, Dinner-Japanese Izakaya  
Today's first stop is one of Japan's three most famous gardens - **Kenrokuen Garden**. The garden offers something to enjoy whatever the season is. You can also overlook the connecting Kanazawa Castle from here during your walk. It's time to immerse yourself in the charm of **Higashichaya Street**. This historic district is renowned for its beautifully preserved tea houses, traditional architecture, and the captivating atmosphere of the geisha culture. After enjoying a delicious

## 06 KANAZAWA ▶ SHIRAKAWAGO ▶ GIFU

Breakfast, Lunch-Local food course, Dinner-Hotel

Embark on a picturesque journey from Kanazawa to the UNESCO World Heritage site of **Shirakawago** which is recognized by UNESCO as a World Heritage Site. Continue onwards, we will visit the **Wada House**, a renowned attraction in Shirakawago. With your entrance ticket, gain access to this cultural gem and delve into the local traditions, history, and architecture. Next, we will proceed to **Gujo Food Sample DIY** to have some DIY experience on making food samples.

## 07 GIFU ▶ KYOTO ▶ OSAKA

Breakfast, Lunch-Sumo hotpot, Dinner-Japanese BBQ Buffet  
Start your day with a visit to Kyoto **Fushimi Inari Shrine**, famous for its seemingly endless path of vibrant orange torii gates, making it one of the most impressive sights in Japan. Don't miss another popular building in Kyoto, **Kinkaku-ji** also known as Temple of the Golden Pavilion, whose top two floors are completely covered in gold leaf. Finally we reach the last leg of our journey as we transfer to eat and shop our way to the heart of Osaka - **Shinsaibashi** and **Dotonbori**.

## 08 OSAKA ▶ KANSAI ▶ SINGAPORE

Breakfast, Meal on Board

Today you will have some leisure time to enjoy the charm of Osaka, the 3rd most populous city in Japan before a transfer to the airport. Bid farewell to this beautiful country as you transfer to the airport for your flight home.

## 09 HOME SWEET HOME

We hope you enjoyed your vacation with EU Holidays and we look forward to seeing you again on your next trip.



HIGASHI CHAYA



# 9天6晚 立山黑部雪山墙之旅

## 行程亮点

### 爱知

- 绿洲 21
- 远眺名古屋电视塔
- 郡上食品模型 DIY

### 岐阜

- 下吕温泉
- 白川乡
- 和田屋 (入场)
- 郡上食品模型 DIY

### 长野

- 松本城
- 大王山葵农园

### 石川

- 东茶屋古街
- 兼六园
- 远眺金泽城

### 富山

- 立山黑部阿尔卑斯雪墙\*

### 京都及大阪

- 伏见稻荷大社
- 金阁寺
- 道顿堀, 心斋桥



立山高架索道

## 01 新加坡 ▶ 名古屋

机上用餐

在新加坡樟宜机场集合，乘搭豪华客机飞往“日出之国”日本。

## 02 名古屋 ▶ 下吕温泉

午餐, 晚餐

由导游接机后，前往名古屋市内游览。

- **绿洲 21** - 名古屋市中心的绿洲21是一座独特的现代建筑，中心是一个形状酷似水滴的玻璃屋顶，您可以在这里放松身心，远眺名古屋电视塔及欣赏名古屋的全景。
  - **热田神宫** - 位于日本名古屋，作为日本最古老、最重要的神社之一，被誉为名古屋的守护神。
- 入住日本三大温泉之一的下吕温泉。

## 03 下吕温泉 ▶ 松本

早餐, 午餐, 晚餐

- **下吕温泉街 (照相)** - 具有千年历史的热门温泉小镇。
- **松本城** - 是一座享有盛誉的日本国宝级古城，以其优美的建筑和壮丽的景观而闻名，是日本历史与壮丽的见证。
- **大王山葵农园** - 是一处以种植和生产优质山葵(芥末)而闻名的农园，不仅是一个农业观光景点，更是一次深入了解日本芥末文化的机会。别错过自费品尝 WASABI 冰淇淋。

## 04 松本 ▶ 阿尔卑斯雪墙 ▶ 富山

早餐, 午餐, 晚餐

• **立山黑部阿尔卑斯路线** - 游览一年一度的雪墙自然奇观。这是一条穿越日本北部阿尔卑斯山脉的独特而壮观的路线，通过缆车，无轨电车和索道等各种交通工具全面体验这一地区的壮丽景色。沿途欣赏高山峡谷、绝壁悬崖和清澈湖泊的壮丽景色。在路线的高点，您将看到阿尔卑斯雪墙，这是在冬季由积雪堆积高达 20 米的巨大雪墙，令人惊叹不已。通常在4月中旬至5月下旬向行人开放晚上入住周围酒店。

## 05 富山 ▶ 金泽

早餐, 午餐, 晚餐

- **兼六园** - 是日本三大名园之一，历史悠长而辉煌。在这座美丽的庭园中，您将欣赏到精心修剪的景观、流水、桥梁和传统建筑。漫步其中，感受和谐的自然景观，领略传统日本园林艺术的魅力。
  - **远眺金泽城** - 金泽城是金泽市的象征，它的黑色城墙和独特的建筑风格吸引了众多游客。
  - **东茶屋古街** - 至今仍保留着往昔风貌的茶屋式的古民宅及日式料理店，是金泽保存最完整的历史街区之一，现被指定为国家重要传统建筑物群保存地区。
- 晚餐后，金泽市内悠闲漫步。您可以随意探索购物街、商业区和夜市，体验当地的购物和美食文化。

## 06 金泽 ▶ 白川乡 ▶ 岐阜

早餐, 午餐, 晚餐

- **世界遗产 - 白川乡**: 抵达白川乡后，您将参观这个被联合国教科文组织列为世界遗产的地区。白川乡以其传统的农村景观和独特的建筑风格而闻名，您可以欣赏到斜屋顶的合掌造和宁静的乡村风光。

- **和田屋 (入场)** - 荻町合掌村內最大的合掌建筑。进入和田屋 可以了解合掌造的建筑特点、日本传统的居住方式和生活文化。
- **郡上食品模型 DIY** - 这是一种有趣的手工艺活动，您可以亲手制作日本传统食物的模型，体验制作的乐趣并带回自己的作品。

## 07 岐阜 ▶ 京都 ▶ 大阪

早餐, 午餐, 晚餐

- **伏见稻荷大社** - 以以后的“千本鸟居”著称。成百上千座朱红色鸟居构成一条到山顶的通道。
- **金阁寺** - 由于寺内核心建筑舍利殿的外墙全部贴以金箔装饰，故昵称为“金阁寺”。虽然不能入内，但一楼正面的窗户通常是开着的，隔着池塘仔细望去应该可以看到释迦牟尼和足利的雕像。
- **道顿堀, 心斋桥** - 大阪的市中心您可以自由购物和享用地道小吃。

## 08 大阪 ▶ 关西 ▶ 新加坡

早餐, 机上用餐

早餐后，您将有一些闲暇时间享受日本第三大人口最多的城市大阪的魅力。**关西机场奥特莱斯 (Kansai Airport Outlet Mall)**: 位于关西国际机场附近的一家大型购物中心。提供各种国际知名品牌和时尚潮流品牌的折扣商品而闻名，特别适合让您在离开日本之前进行最后一轮购物。最后集合告别日本，乘搭客机飞返新加坡。

## 09 甜蜜家园

希望您同欧美假期共享美丽的回忆，期待在下次旅行中再次见到您。



9D7N

# TATEYAMA KUROBE ALPINE ROUTE



9天7晚 立山黑部雪山墙之旅

JPTYTS | Apr - Jun 2024

SCAN FOR  
DIGITAL COPY

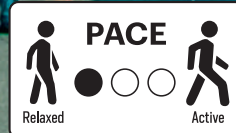


**COUNTRY  
FOCUSED**



Inspiring adventure through unforgettable alpine route. Marvel at the breathtaking views of the "Snow Wall Corridor" with refreshing alpine air this paradise.

TATEYAMA ALPINE ROUTE SNOW WALL





# HIGHLIGHTS

## FUJI

- Lake Ashinoko
- Cable Car to Owakudani
- Fuji Shibazakura Festival

## MATSUMOTO

- Daio Wasabi Farm
- Matsumoto Castle
- Ishii Miso factory

## TATEYAMA ALPINE ROUTE

- Snow Corridor
- Kurobe Cable Car
- Kurobe Dam

## TAKAYAMA

- Shirakawa-go
- Shirakawago Observatory Deck
- Hida Great Limestone Cave
- Takayama Old Town Street
- Takayama Miyagawa Morning Market
- Sample Village Iwasaki
- Toki Premium Outlet

## SHIZUOKA

- Kadode Oigawa
- Nihondaira Yume Observatory

## TOKYO

- Sensoji Asakusa Kannon Temple
- Nakamise Shopping Street
- Shinjuku Shopping Street

Service Fee Guideline:  
(Based on 9D6N)

- JPY9000 per person

### Notes:

- The sequence of the itinerary, flight schedules and hotels are subject to change without prior notice in the event of unforeseen circumstances.
- During major events, accommodation may be relocated without prior notice.
- All pictures shown are for illustration purpose only.
- A minimum group size of 15 passengers is required for a confirmed departure. Additionally, for groups consisting of 20 or more passengers, a tour leader will be assigned.
- Tour is conducted in Mandarin unless otherwise stated.

### 服务费：(9天6晚)

- 每人9000日元

### 备注:

1. 行程顺序可能受到不可预测的情况或恶劣天气的情况下，将会更改或以其他景点替代行程。以确保旅程的顺畅，如有改动，恕不另行通知。
2. 在重大活动期间，住宿可能会搬迁，恕不另行通知。
3. 所有显示的图片仅用于说明目的。
4. 确认出发需要至少15名旅客的团体人数，20名以上旅客安排随团领队。
5. 导游全程以中文解说，除非另有说明。



## DELICACIES

### Meal Plan

7 Breakfasts 6 Lunches 7 Dinners

### Specialties

- Shabu – Shabu (Japanese Hotpot)
- Soba Noodle Set
- Japanese-style Onsen Hotel Dinner
- Japanese Eel Rice Set
- Japanese BBQ Set

## 4★ HOTELS

**TOKYO** Sunshine City Prince Hotel

**FUJI** Isawa Shinko Onsen Resort

**MATSUMOTO** Alpico Plaza Hotel Matsumoto

**TOYAMA** Toyama Excel Hotel Tokyu

**TAKAYAMA** Hida Plaza Hotel Takayama

**HAMAMATSU** Okura Act City Hotel Hamamatsu

\*Note: Hotels subjected to final confirmation. Should there be changes, customers will be offered alternative accommodation similar to this list.



FUJI SHIBAZAKURA



# 9D7N Tateyama Kurobe Alpine Route

## 01 SINGAPORE ▶ TOKYO

Dinner

Our vacation begins with a pleasant flight from Singapore to the Land of the Rising Sun, Japan. Upon arrival, check in to your hotel and enjoy some free time exploring at leisure.

## 02 TOKYO ▶ FUJI

Breakfast, Lunch, Dinner

Begin our exciting day with a photo stop at [Lake Ashinoko](#) which was formed after the volcano's last eruption 3000 years ago. If the sky is clear, you may see Mount Fuji as backdrop. Thereafter, we will take a [cable car to Owakudani](#), here is a volcanic valley with active sulphur vents and hot springs. Thereafter, we will travel to Lake Kawaguchi to attend the annual [Fuji Shibazakura Festival \(Pink Moss\)](#). It is a festival that features the moss phlox flower with Mount Fuji in the background. There are over 800,000 moss phlox (shibazakura) planted throughout the area. The timing of the cherry blossom bloom can be unpredictable due to varying weather conditions.

## 03 FUJI ▶ MATSUMOTO

Breakfast, Lunch, Dinner

Start our day with a tour to [Daio Wasabi Farm](#), wasabi or Japanese horseradish is a plant of the family Brassicaceae. Make a visit to [Matsumoto Castle](#), one of the most complete and beautiful among Japan's original castles. Thereafter, travel to [Ishii Miso factory](#) and explore Japanese traditional way on Miso brewing.



## 04 MATSUMOTO ▶ TATEYAMA ALPINE ROUTE ▶ TOYAMA

Breakfast, Lunch, Dinner

An exciting day awaits us as we will visit the [Tateyama Kurobe Alpine Route - Snow Corridor](#) "Yuki no Ootani". We traverse the route using a variety of vehicles (6 types) with an elevation change 2400 meters. You will be sure to have a fun day today! Along the way, we will be visiting [Kurobe Dam](#) too. The construction of this dam has been called "the most difficult work of the century", at 1,500m, Kurobe Dam is the highest arch dam in Japan.

Note: Snow Corridor visit is only available in mid-April till end of May and is subject to weather conditions.

## 06 TAKAYAMA ▶ HAMAMATSU

Breakfast, Lunch, Dinner

After breakfast, take a walk at [Takayama Miyagawa Morning Market](#), which sells fresh locally grown fruits, vegetable, flowers and more. Then, move on to [Sample Village Iwasaki](#) to enjoy a DIY session of making food samples at a food replica making workshop. Thereafter, enjoy shopping time at [Toki Premium Outlet](#), home to 180 outlet stores!

## 07 HAMAMATSU ▶ TOKYO

Breakfast, Lunch, Dinner

After breakfast, make a visit to [Kadode Ooigawa](#) for a unique experience in their "Green Tea Tours". Thereafter, travel to [Nihondaira Yume Observatory](#), a popular scenic spot in Shizuoka with a magnificent view of Mt. Fuji. This afternoon, travel back to Tokyo and we will spend some time exploring the bustling streets of [Shinjuku](#).

## 08 TOKYO ▶ SINGAPORE

Breakfast, Meal on Board

Begin your tour at [Sensoji](#), also known as [Asakusa Kannon Temple](#), to see the city's oldest temple in its iconic vibrant colours. Along the way, stroll along [Nakamise](#) shopping street to browse a variety of traditional, local snacks and souvenirs. You may even catch a glimpse of Sky Tree from the Asakusa area! Enjoy some free time at leisure until it is time to transfer to the airport for your flight home.

## 09 HOME SWEET HOME

We hope you enjoyed your vacation with EU Holidays and we look forward to seeing you again on your next trip.





# 9天7晚 立山黑部雪山墙之旅

## 行程亮点

### 富士

- 芦之湖
- 大涌谷地狱（单程缆车）
- 富士芝樱花节

### 松本

- 大王山葵农园
- 松本城
- 石井味噌工厂

### 富山

- 雪墙
- 黑部立山缆车
- 黑部巨大水坝

### 岐阜

- 白川乡
- 宫川朝市
- 飛騨鍾乳洞
- 飛騨和风街道
- 郡上食品模型 DIY

### 静岡

- 大井川
- 日本平观景台

### 东京

- 奥特莱斯
- 浅草寺
- 仲见世商店街
- 新宿购物街



立山高索道

## 01 新加坡 ▶ 东京

晚餐

在新加坡樟宜机场集合，乘搭豪华客机飞往“日出之国”日本。由导游接机后，前往东京市内，晚上自由散步在酒店周围繁华街道。



松本城

## 02 东京 ▶ 富士

早餐, 午餐, 晚餐

- **芦之湖** - 搭乘巴士游览芦湖周边美丽风景。
- **大涌谷地狱（单程缆车）** - 在这里可以近距离观看到壮观的火山活动，是箱根最具有代表性的景观。
- **富士芝樱祭** - 以富士山为背景，约80万株芝樱竞相怒放，如同为大地铺上了花的地毯。芝樱盛开的时间会受到天气条件的影响，因此具体的盛开时间是不可预测的。

## 03 富士 ▶ 松本

早餐, 午餐, 晚餐

- **大王山葵农园** - 风景宜人，还有宽敞明亮的美食餐厅和商店。
- **松本城** - 建于永正年间，最初的原型为深志城，是目前日本现存的最古老的五重六层式的国宝之城。
- **石井味噌工厂** - 长野县是日本最大的“味噌”生产地，在导游的带领下参观酿造厂是一个很好的方式，可以了解更多关于该地区的传统和味噌的重要性。

## 04 松本 ▶ 立山高山线 ▶ 富山

早餐, 午餐, 晚餐

- **立山黑部** - 享有日本阿尔卑斯山美名的立山黑部，日本三大奇观之一，全程使用6种交通工具翻山越岭：大雪谷中散步，您可以直接触摸雪壁。开山之后的壮观是立山黑部最具魅力之处。请来亲身感受立山黑部雪壁的壮丽吧！（注：大雪谷只限于四月中旬至六月中旬，视天气而定）
- **黑部水库** - 是日本最大级水库。

## 05 富山 ▶ 高山

早餐, 午餐, 晚餐

- **白川乡合掌村** - 深入体会江户时代的民族生活风貌，这里的所有房屋皆是合掌形式建造被列入“世界文化遗产”。
- **和田屋入场** - 让你能够了解合掌形式房屋的内部结构

屋的内部结构

- **飛騨鍾乳洞** - 石灰岩洞位于日本最高海拔900m处。它以其许多罕见的弯曲钟乳石而闻名，称为螺旋石。
- **飛騨和风街道** - 江户传统的日式购物街，售卖古式传统的手工艺品。

## 06 高山 ▶ 浜松

早餐, 午餐, 晚餐

- **宫川早市** - 高山的早市是日本三大早市之一。
- **郡上八幡食品样本制作商店** - 亲自体验制作食品样本。
- **奥特莱斯** - 日本最大的outlet之一，可以疯狂购物。

## 07 浜松 ▶ 东京

早餐, 午餐, 晚餐

- **大井川绿茶之旅** - 位于静冈县中心，自然景观丰富的大井川流域，是知名茶产地。
- **日本平观景台** - 位于静冈县的一处受欢迎的景点，可以欣赏到富士山的壮丽景色。
- **新宿** - 我们途径东京最出名的不夜城。

## 08 东京 ▶ 新加坡

早餐, 机上用餐

- **浅草观音寺** - 参观最著名、最古老的寺庙从雷门到宝藏门之间有一狭长且古色古香的参道。
- **仲见世商店街** - 两侧商店整齐林立售卖特产小品。您可在浅草区远眺壮丽晴空塔。

随后前往机场,返回温馨的家。

## 09 甜蜜家园

希望您同欧美假期共享美丽的回忆，期待在下次旅行中再次见到您。



# 9D7N SHIRAKAWAGO *Twilight Spectacular*

9天7晚 白川乡点灯节之旅

JPSLUW | Jan 2024 - Feb 2024

## COUNTRY FOCUSED

I WAS  
HERE!

SCAN FOR  
DIGITAL COPY



Embark on a captivating journey where ancient traditions and modern wonders intertwine seamlessly. Immerse yourself in the enchanting tales of the past and embrace the vibrant energy of the present.

WORLD HERITAGE SITE  
SHIRAKAWAGO VILLAGE AND WINTER ILLUMINATION



Wifi  
Router



PACE



Relaxed

Active



# HIGHLIGHTS

## NAGOYA

- Nagoya Atsuta Shrine
- Oasis 21 (overlooking Nagoya Television Tower, Mirai Tower)
- Sakae Shopping District

## GIFU

- Gujo Hachiman Museum
- Food model DIY experience
- Takayama Historical District
- UNESCO Shirakawa-go Village Light Up Festival

## TOYAMA

- Miyagama Morning Market
- Toyama Crab auction
- Kanazawa Kenrokuen Garden
- Higashi Chaya District

## FAKUI

- Hakusan Historical Street
- Lion head coloring DIY Experience
- Tojinbo Cliff

## KYOTO

- World Heritage Site - Kiyomizu Temple
- Arashiyama Park (for the bamboo trail)
- Japanese tea ceremony tea experience

## HYOGO

- Strawberry picking experience
- Kobe Hakutsuru Sake Brewery tour
- Kobe Kitano Ijinkangai
- Hokudan Earthquake Memorial Park

## OSAKA

- Osaka Castle (photo stop)
- Umeda Sky Observatory
- Shinsaibashi, Dotonbori Walking Street
- Kansai Rinku Premium Outlet

### Service Fee Guideline: (Based on 9D7N)

- JPY9000 per person

### Notes:

- The sequence of the itinerary, flight schedules and hotels are subject to change without prior notice in the event of unforeseen circumstances.
- During major events, accommodation may be relocated without prior notice.
- All pictures shown are for illustration purpose only.
- A minimum group size of 15 passengers is required for a confirmed departure. Additionally, for groups consisting of 20 or more passengers, a tour leader will be assigned.
- Tour is conducted in Mandarin unless otherwise stated.



## DELICACIES

### Meal Plan

7 Breakfasts, 7 Lunches, 6 Dinners

### Specialties

- Miso Pork Rib Set
- Gifu Local Chicken Cuisine
- Crab Meal
- Izakaya
- Michelin-Starred Meal
- Chanko-Nabe (Hotpot)
- Japanese-Style Yakimiku

## 4 - 5★ HOTELS

**NAGOYA** Nagoya Kanko Hotel

**TAKAYAMA** Hida Hotel Plaza

**KANAZAWA** Kanazawa Tokyu Hotel

**LAKE BIWA** Hotel & Resort Nagahama

**KYOTO** Westin Miyako Kyoto

**OSAKA** Sheraton Miyako Hotel Osaka

\*Note: Hotels subjected to final confirmation. Should there be changes, customers will be offered alternative accommodation similar to this list.



KENROKUEN GARDEN, KANAZAWA



# 9D7N Shirakawago Twilight Spectacular

## 01 SINGAPORE ▶ NAGOYA

Meal on Board

Our vacation begins with a pleasant flight from Singapore to the Land of the Rising Sun, Japan.

## 02 NAGOYA

Lunch, Dinner

Upon arrival, immerse yourself in Nagoya's cultural tapestry at the revered **Nagoya Atsuta Shrine**. Afterward, venture into the heart of the city to discover the futuristic delights of **Oasis 21**, is a contemporary architectural masterpiece that offers a refreshing escape from the bustling city. You can enjoy panoramic views of Nagoya, overlooking **Nagoya Television Tower** and **Mirai Tower**. Indulge in retail therapy at **Sakae Shopping District**.

## 03 NAGOYA ▶ GUJO HACHIMAN ▶ TAKAYAMA

Breakfast, Lunch, Dinner

Travel to the historic town of **Gujo Hachiman** and visit the enlightening Gujo Hachiman Museum. Unleash your creativity with a delightful **Food Model DIY experience**. Then, venture to Takayama's enchanting Historical District, renowned for its beautifully preserved wooden houses. Lastly, we will transfer to Shirakawago for another main highlight of our tour - **Shirakawago Light Up**. During the light-up event, many of the village's gassho-zukuri farmhouses are lit up from 17:30 to 19:30.

\* Due to admission restrictions, special arrangement had been made with a local tour bus company to bring our guest to the light up event on public bus. We thank you for your understanding.

### Special Arrangements:

UNESCO-listed Shirakawa-go Village Light-up Festival. Experience the enchanting beauty of the traditional thatched-roof houses as they are illuminated by thousands of twinkling lights, creating a magical atmosphere that is truly unforgettable. Immerse yourself in the rich cultural heritage of this world-renowned event and capture stunning photos of the picturesque scenery that will leave you in awe.



## 04 TAKAYAMA ▶ TOYAMA ▶ KANAZAWA

Breakfast, Lunch, Dinner

Begin your day with the lively **Miyagama Morning Market** in Toyama. Witness the thrilling **Toyama Crab auction**, a feast for seafood lovers. In Kanazawa, bask in the natural splendor of **Kenrokuen Garden**, one of Japan's most exquisite landscape gardens. Explore the **Higashi Chaya District**, can try famous gold ice cream at own expense. Enjoy a leisurely stroll through the vibrant city of Kanazawa.

## 05 KANAZAWA ▶ HAKUSAN ▶ FUKUI ▶ NAGAHAMA

Breakfast, Lunch, Dinner

Discover the historical charm of **Hakusan's streets** and engage in a hands-on **Lion Head Coloring DIY experience**. Capture breathtaking photos at the majestic **Tojinbo Cliff**. Spend a peaceful night by the renowned **Lake Biwa**, Japan's largest freshwater lake.

## 06 NAGAHAMA ▶ KYOTO

Breakfast, Lunch, Dinner

Unveil the wonders of Kyoto, starting with the iconic **Kiyomizu Temple**, a World Heritage Site. Immerse yourself in the serene beauty of the **Arashiyama Park's bamboo trail**. Experience the tranquility of a traditional **Japanese tea ceremony** and savor a sumptuous Michelin-starred dinner, specially arranged for you.

## 07 KYOTO ▶ KOBE ▶ OSAKA

Breakfast, Lunch, Dinner

Embark on a **strawberry picking** adventure in Kyoto, reveling in the luscious sweetness of this beloved fruit. In Kobe, tour the **Hakutsuru Sake Brewery** and explore the charming **Kitano Ijinkagai**, the former foreign residence district. Pay respects at **Hokudan Earthquake Memorial Park**, a solemn reminder of the city's resilience.

## 08 OSAKA

Breakfast, Lunch

Capture a photo of **Osaka Castle**, a symbol of the city's grandeur. Soar to new heights at **Umeda Sky Observatory**, offering panoramic vistas of the bustling metropolis. Immerse yourself in the vibrant energy of **Shinsaibashi and Dotonbori Walking Street**, where shopping and gastronomic delights await.

## 09 OSAKA ▶ KANSAI ▶ SINGAPORE

Breakfast, Meal on Board

This morning transfer to Kansai Airport for your departure, bidding farewell to the captivating beauty and unforgettable memories of Central Japan. We hope you enjoyed your vacation with EU Holidays and we look forward to seeing you again on your next trip.



SHINSAIBASHI, DOTONBORI WALKING STREET



# 9天7晚 白川乡点灯节之旅

## 行程亮点

### 爱知

- 热田神社
- 绿洲21 (远眺名古屋电视塔、未来塔)
- 荣商业街

### 岐阜

- 郡上八幡博物馆
- 食品模型DIY体验
- 高山古街散步
- 特别安排: 世界遗产白川乡点灯节

### 富山

- 宫川早市
- 特别安排: 富山螃蟹拍卖会
- 金泽兼六园
- 东茶屋古街

### 福井

- 白山历史建筑群地区
- 狮子头涂色DIY体验
- 东寻坊地区

### 京都

- 世界遗产清水寺游览
- 岚山公园 (嵯峨竹林小径)
- 日本茶道体验

### 兵庫

- 采草莓体验
- 神户白鹤清酒厂
- 异人馆地区
- 地震纪念公园

### 大阪

- 大阪城公园
- 梅田空中展望台
- 心斋桥
- 道顿堀商业街

服务费: (9天7晚)

· 每人9000日元

备注:

1. 行程顺序可能受到不可预测的情况或恶劣天气的情况下, 将会更改或以其他景点替代行程。以确保旅程的顺畅, 如有改动, 恕不另行通知。
2. 在重大活动期间, 住宿可能会搬迁, 恕不另行通知。
3. 所有显示的图片仅用于说明目的。
4. 确认出发需要至少15名旅客的团体人数, 20名以上旅客安排随团领队。
5. 导游全程以中文解说, 除非另有说明。

## 01 新加坡 ▶ 名古屋

机上用餐

在新加坡樟宜机场集合, 乘搭豪华客机飞往“日出之国”日本。

## 02 名古屋

午餐, 晚餐

- **名古屋热田神社** - 一座古老神社, 展现着神秘而庄严的氛围。
- **绿洲21** - 从观景台远眺名古屋电视塔, 欣赏城市的壮丽夜景。
- **荣商业街** - 逛街购物、品尝美食的绝佳场所。

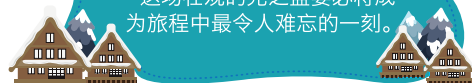
## 03 名古屋 ▶ 郡上八幡 ▶ 高山

早餐, 午餐, 晚餐

- **郡上八幡博物馆** - 了解郡上八幡地区的历史和文化。
- **食品模型DIY体验** - 亲手制作独特的美食模型。
- **高山古街** - 漫步在历史悠久的街道上, 感受古城的魅力。
- **世界遗产: 观赏白川乡点灯节** - 参加世界遗产白川乡的点灯节, 欣赏美丽的灯光。

### 最令人期待的行程亮点: 白川乡点灯节

当夜幕降临, 数百座传统民居被灯光点亮, 营造出一幅童话般的景象。瞬间, 你置身于如梦如幻的仙境中, 这场壮观的光之盛宴必将成为旅程中最令人难忘的一刻。



\* 由于入场限制原因, 本次游览是和当地旅游巴士公司特别签约搭乘当地公共旅游巴士前往游览。请谅解。

## 04 高山 ▶ 富山 ▶ 金泽

早餐, 午餐, 晚餐

- **宫川早市** - 参观热闹的市集, 品尝新鲜的海鲜美食。
- **富山螃蟹拍卖会** - 亲眼目睹螃蟹拍卖的独特场景。
- **金泽兼六园** - 欣赏精美的日本庭园。
- **东茶屋古街** - 您可自费品尝当地著名的金箔冰淇淋。
- **金泽市** - 自由探索金泽市区, 享受自由自在的时光。

## 05 金泽 ▶ 白山 ▶ 福井 ▶ 长滨

早餐, 午餐, 晚餐

- **白山历史建筑群地区** - 参观保存完好的历史建筑, 领略悠久的历史和文化。
- **狮子头涂色DIY体验** - 亲手涂色狮子头, 体验传统工艺的乐趣。
- **东寻坊地区** - 欣赏美丽风景, 留下难忘的照片回忆。
- **长滨温泉酒店** - 入住温泉酒店, 享受放松和舒适的时光。

## 06 长滨 ▶ 京都

早餐, 午餐, 晚餐

- **清水寺游览** - 参观世界遗产清水寺, 领略其庄严的氛围和壮观的建筑。
- **岚山公园, 嵯峨竹林小径** - 漫步于岚山公园和嵯峨竹林小径, 感受自然的宁静和美景。
- **日本茶道体验** - 亲自参与日本茶道的仪式, 体验传统的日本茶文化。
- **米其林特色晚餐** - 晚上特别安排的米其林级别的特色晚餐, 享受美食的独特体验。

## 07 京都 ▶ 神户 ▶ 大阪

早餐, 午餐, 晚餐

- **采草莓体验** - 参与采摘新鲜草莓的活动, 品尝甜美的水果。
- **神户白鹤清酒厂** - 参观神户著名的清酒厂, 了解清酒的酿造过程。
- **异人馆地区探访** - 探索异人馆地区, 欣赏奇特的建筑和艺术作品。
- **地震纪念公园** - 参观地震纪念公园, 缅怀历史中的重要事件。

## 08 大阪

早餐, 午餐

- **大阪城公园** - 留下美丽的照片纪念。
- **梅田空中展望台** - 登上梅田空中展望台, 俯瞰大阪市区的壮丽景色。
- **心斋桥, 道顿堀商业街** - 探索心斋桥和道顿堀商业街, 尽情享受购物和美食的乐趣。

## 09 大阪 ▶ 新加坡

早餐, 机上用餐

送往关西国际机场, 结束愉快的旅程, 飞返甜蜜的家园-新加坡。我们希望您与欧美假期创造了美好的回忆, 期待在下次旅行中再次见到您。

岚山公园 (嵯峨竹林小径)



Embracing Nature  
**6D4N OKINAWA** 沖繩  
+ 2N FREE IN TAIPEI TOUR  
6天4晚 擁抱自然 ~ 冲绳趣 + 2晚台北游

JPOKAW | Aug 2023 - Mar 2024

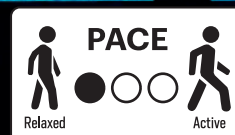
**COUNTRY FOCUSED**

Okinawa, a tropical paradise in Japan, offers a unique blend of natural beauty, rich cultural heritage, and vibrant traditions. Explore stunning beaches, crystal-clear waters, and lush greenery, immersing yourself in the island's breathtaking landscapes.

SCAN FOR  
DIGITAL COPY



OKINAWA CHURAUMI AQUARIUM





# HIGHLIGHTS

## OKINAWA

- Cape Manzamo
- Nago Pineapple Factory Garden
- Nakijin Castle Ruins
- Okinawa Churaumi Aquarium
- Okinawa AEON MALL
- Cyokusendo Cave
- EISA Dance Performance
- Shurijo Castle
- Semi-Submersible Cruise
- DFS Store



## DELICACIES

### Meal Plan

6 Breakfasts, 4 Lunches, 3 Dinners

### Specialties

- Japanese Shabu Shabu
- Chinses Cuisine
- Kyoto Sumo Pot (Nabe)
- Unagi Set Dinner

## 4 – 5★ HOTELS

**WANZA** Wanza Beach Resort Hotel

**MANZA** Manza Beach Resort Hotel

**NAHA** Naha City Hotel

**TAIPEI** Caesar Metro Taipei

\*Note: Hotels subjected to final confirmation. Should there be changes, customers will be offered alternative accommodation similar to this list.



MIYAGI ISLAND



# 6D4N Embracing Nature Okinawa + 2N Free in Taipei Tour

## 01 SINGAPORE ▶ OKINAWA

Meal on Board

Our vacation begins with a pleasant flight from Singapore to Okinawa.

## 02 OKINAWA

Lunch (Okinawa SOBA Set),  
Dinner (Hotel Dinner)

Exploring the Beauty of Okinawa. Upon arrival at Okinawa Naha International Airport, you will be greeted by your tour guide. Transfer to **Cape Manzamo** for a breathtaking sightseeing experience. Marvel at the stunning coastal cliffs and panoramic views of the turquoise sea. In the evening, check-in at the Seaside Beach Resort Hotel, where you can indulge in leisure activities, enjoying beauty treatments, and strolling along the beautiful beach.

## 03 MANZA ▶ OCEAN EXPO PARK ▶ MANZA

Breakfast, Lunch (Okinawa Cuisine Set), Dinner (Hotel Dinner)

Start the day by visiting the **Nago Pineapple Factory Garden**, a charming pineapple-themed garden. Learn about the pineapple wine production process and taste some delightful pineapple treats. Next, explore the **Nakijin Castle Ruins**, a UNESCO World Heritage Site. Enjoy a panoramic view of the South China Sea from the observatory. Continue to **Ocean Expo Park**, where you will discover the wonders of marine life at the **Okinawa Churaumi Aquarium**, home to Japan's largest flat tank. Marvel at the majestic whale sharks, enjoy an entertaining dolphin show, and learn about the ecology of sea turtles. The captivating coastline of Ocean Park will leave you spellbound.



## 04 MANZA ▶ OKINAWA WORLD ▶ NAHA CITY

Breakfast, Lunch (Japanese Cuisine Buffet), Dinner (Okinawa Cuisine)  
Embark on a shopping adventure at **Okinawa AEON MALL**, a unique southern-style store that will satisfy your retail desires. Then, immerse yourself in the mystique of **Cyokusendo Cave**, discovered in 1973. Walk along the 890-meter-long underground stalactite path and feel like you are exploring the depths of the earth. Enjoy a mesmerizing performance of **Okinawa's folk dance, EISA**. Experience various DIY activities and indulge in purchasing a variety of Okinawa specialties. Return to **Naha**, the largest city in Okinawa, and take a leisurely stroll along the bustling international avenue.

## 05 NAHA

Breakfast, Lunch (Japanese Cuisine Buffet)

After breakfast, visit the historic **Shurijo Castle**, an ancient city in Okinawa. Explore the castle grounds and admire its magnificent architecture. After lunch, embark on a **semi-submersible cruise** to discover the enchanting underwater world of Okinawa. In the evening, enjoy shopping at the **DFS store** in Okinawa City, where you can find an array of tax-free products.

## 06 NAHA ▶ TAIPEI

Breakfast

After breakfast, check out from the hotel and transfer to the airport for your departure. Bidding farewell to the captivating island of Okinawa and fly to Formosa Island – Taiwan. Upon arrival at Taoyuan airport, transfer to hotel in Taipei.

## 07 TAIPEI

Breakfast

Today, free at leisure to explore what Taipei has to offer!

## 08 TAIPEI ▶ SINGAPORE

Breakfast, Meal on Board

Enjoy some more leisure time before we transfer to airport for your flight home. We hope you had enjoyed your vacation with EU Holidays and we look forward seeing you again on your next trip!



EISA Dance Performance

Service Fee Guideline:  
(Based on 6D4N)

- JPY6000 per person

Notes:

- The sequence of the itinerary, flight schedules and hotels are subject to change without prior notice in the event of unforeseen circumstances.
- During major events, accommodation may be relocated without prior notice.
- All pictures shown are for illustration purpose only.
- A minimum group size of 15 passengers is required for a confirmed departure. Additionally, for groups consisting of 20 or more passengers, a tour leader will be assigned.
- Tour is conducted in Mandarin unless otherwise stated.





# 6天4晚 擁抱自然 ~ 冲绳趣 + 2晚台北游

## 行程亮点

### 冲绳岛

- 万座毛
- 名护菠萝工厂花园
- 今归仁城遗址
- 冲绳美丽海水族馆
- 永旺梦乐城
- 玉泉洞
- 民俗舞蹈表演EISA
- 首里城
- 半潜游览船

万座毛 (MANZAMO)

## 01 新加坡 ▶ 冲绳

机上用餐

在机场集合，搭机飞往冲绳宝岛。

## 02 冲绳

午餐 (冲绳特色套餐), 晚餐 (酒店晚餐)

- **万座毛 (MANZAMO)** - 是位于冲绳本岛中部的一个海岬，以其壮丽的岩壁和迷人的海景而闻名。您可以在这里欣赏大自然的神奇景观，包括绵延的海岸线、碧蓝的海水和奇特形状的岩石。续程前往入住海边沙滩度假酒店，享受度假酒店内休闲娱乐。

## 03 万座 ▶ 冲绳海洋博物馆

### ▶ 万座

早餐, 午餐 (冲绳特色套餐),  
晚餐 (酒店晚餐)

- **名护菠萝工厂花园** - 这是一个以菠萝为主题的花园，您可以参观菠萝酒的制作过程，并欣赏到各种菠萝相关的展示和景观。
- **今归仁城遗址 (NAJINKI JO)** - 这是冲绳的世界遗产，也是一座历史悠久的城址。您可以在这里欣赏到壮丽的南中国海全景，同时了解冲绳丰富的历史文化。
- **冲绳美丽海水族馆** - 是一个集合了水族馆、海洋生物表演和海滩等多种娱乐设施的综合性海洋主题公园。您可以在这里观赏到各种珍稀的海洋生物，如金钱鲨鱼和海豚，并且了解海洋生态保护的重要性。

## 04 万座 ▶ 冲绳大世界 ▶ 那霸

早餐, 午餐 (日式自助餐),  
晚餐 (冲绳乡土料理餐)

- **永旺梦乐城** - 独特的具有南国情调的店内，增加了你的购物欲望。
- **冲绳大世界** - 是一个娱乐和购物的综合区域，包括玉泉洞的钟乳石道、冲绳的民间舞蹈表演ESA以及各种DIY活动和冲绳特产的购物机会。
- **那霸** - 冲绳最大城市，自由散步在冲绳最繁华的国际大道。

## 05 那霸

早餐, 午餐 (日式自助餐)

- **首里城** - 是冲绳的古城遗址，也是冲绳的象征之一。这座城堡建于15世纪，曾是琉球王国的政治和文化中心。您可以在这里欣赏到传统的琉球建筑风格，了解冲绳的历史和文化。
- **半潜游览船** - 观赏美丽的冲绳的海中世界。

## 06 那霸 ▶ 台北

机上用餐

- 一早前往机场，往素有宝岛之称的台湾。抵达后，前往酒店休息。

## 07 台北

早餐

享受一整天自由悠闲的时光，跟随自己的脚步恣意漫游。

## 08 台北 ▶ 新加坡

机上用餐

把握最后一天的悠闲时光。接着前往机场，结束愉快的旅程，飞返甜蜜的家园-新加坡。我们希望您与欧美假期创造了美好的回忆，期待在下一次旅行中再次见到您。



玉泉洞

服务费: (6天4晚)

• 每人6000日元

备注:

1. 行程顺序可能受到不可预测的情况或恶劣天气的情况下，将会更改或以其他景点替代行程。以确保旅程的顺畅，如有改动，恕不另行通知。
2. 在重大活动期间，住宿可能会搬迁，恕不另行通知。
3. 所有显示的图片仅用于说明目的。
4. 确认出发需要至少15名旅客的团体人数，20名以上旅客安排随团领队。
5. 导游全程以中文解说，除非另有说明。



# 9D7N SAKURA SPLENDOR IN CENTRAL JAPAN

9天7晚 本州樱花盛宴

JPSAKS | Mar – Apr 2024

SCAN FOR  
DIGITAL COPY



## COUNTRY FOCUSED

Experience stunning cherry blossoms in Japan's northernmost island. Immerse yourself in the beauty of late blooming cherry blossoms for a memorable Hokkaido adventure.

NAKAMISE

I WAS  
HERE!





# HIGHLIGHTS

## OSAKA

- Osaka Castle Park
- Umeda sky observatory
- Shinsaibashi, Dotonbori walking street

## KAOTO

- Kiyomizudera Temple- World Heritage
- Arashiyama park for bamboo trail
- TAKAYAMA
- Sample Village
- Wada House
- Miyagawa morning market

## NAGANO

- Daio Wasabi Farm
- Matsumoto Castle
- Ishii Miso factory

## TOKYO

- Oishi park
- Lake Kawaguichi
- Meguro river
- Sensoji Asakusa Kannon Temple
- Nakamise Shopping Street
- Closeup photo with Tokyo Skytree
- Ueno Park Cherry Blossom Tunnel
- Shinjuku Gyoen National Garden
- Ginza luxury shopping district

### Service Fee Guideline: (Based on 9D6N)

- JPY9000 per person

### Notes:

- Sakura season varies depending on the location and weather conditions. The exact timing of the cherry blossom bloom can be unpredictable.
- The Company reserves the right to alter tour itineraries, sequence of itineraries, travel arrangements and accommodation due to unforeseen changes, weather conditions, prevailing Covid rules and PCR procedure.
- Tour itinerary, hotel details and inclusions are based on English itinerary.
- Tour is conducted in Mandarin unless otherwise stated.
- A minimum group size of 15 passengers is required for a confirmed departure. Additionally, for groups consisting of 20 or more passengers, a tour leader will be assigned.

### 服务费: (9天6晚)

- 每人9000日元

### 备注:

1. 樱花季节因地理位置和天气条件的不同而有所变化,盛开的确切时间是无法预测的。
2. 行程顺序可能受到不可预测的情况或恶劣天气的情况下,将会更改或以其他景点替代行程。以确保旅程的顺畅,如有改动,恕不另行通知。
3. 本社保留最终权力调整/更改因遇到不可预测的恶劣天气或交通突发情况,受影响的行程内容将不接受任何赔偿/退款。
4. 导游全程以中文解说,除非另有说明。
5. 如中英行程有差异,请以英文行程为主。
6. 确认出发需要至少15名旅客的团体人数,20名以上旅客安排随团领队。

# SAKURA SPECIALS

- Ueno Park Cherry Blossom Tunnel
- Nagano City Cherry Blossom Spots
- Meguro river
- Shinjuku Gyoen National Garden



## DELICACIES

### Meal Plan

7 Breakfasts 6 Lunches 6 Dinners

### Specialties

- Shabu – Shabu (Japanese Hotpot)
- Japanese-style Onsen Hotel Dinner
- Chanko-Nabe
- Japanese BBQ Set
- Keichan Meal (pan-fried chicken)
- Seafood Set
- HOTO Meal
- Tempura Set

## 4★ HOTELS

**KANSAI** Kansai Washington hotel

**OSAKA** RIHGA Royal Hotel Osaka

**NAGOYA** Nagoya Kanko Hotel

**TAKAYAMA** Hida Plaza Hotel Takayama

**NAGANO** Royal Hotel Yatsugatake

**TOKYO** Sunshine City Prince Hotel

\*Note: Hotels subjected to final confirmation. Should there be changes, customers will be offered alternative accommodation similar to this list.



KIYOMIZUDERA TEMPLE



# 9D7N Sakura Splendor In Central Japan

## 01 SINGAPORE ▶ OSAKA

### Meal on Board

Our vacation begins with a pleasant flight from Singapore to the Land of the Rising Sun, Japan. Upon touchdown at Kansai Airport and be greeted by your local guide. Transfer to your hotel and rejuvenating your body and mind.

## 02 OSAKA'S TREASURES

### Breakfast, Lunch, Dinner

Experience the magic of cherry blossoms at [Osaka Castle Park](#), a breathtaking sight to behold. Reach for the skies at [Umeda Sky Observatory](#), offering panoramic views of the city and beyond. Discover the vibrant energy of [Shinsaibashi and Dotonbori](#), bustling streets teeming with shops, restaurants, and nightlife. Unwind and indulge in the vibrant atmosphere of Osaka, where culinary delights and entertainment are aplenty.



## 03 KYOTO'S TIMELESS BEAUTY

### Breakfast, Lunch, Dinner

Depart from Osaka to Kyoto, a city steeped in history and cultural treasures. Visit the iconic [Kiyomizudera Temple](#), a UNESCO World Heritage site, and be captivated by the cherry blossoms surrounding it. Immerse yourself in the tranquility of [Arashiyama Park](#), famous for its serene bamboo trail. As the day comes to a close, settle into your Nagoya city hotel for a peaceful night's rest.

As you approach Kiyomizudera Temple, you'll be greeted by a stunning panorama of cherry trees, their delicate blossoms cascading down the hillside.

## 04 SHIRAKAWA'S CHARM

### Breakfast, Lunch, Dinner

Embark on a unique culinary adventure with a [Food Model DIY experience](#) in Nagoya. Journey to [Shirakawa village](#), a UNESCO World Heritage village known for its traditional thatched-roof houses. Step back in time as you explore the [Wada House](#), an exceptionally preserved historical building. Overnight stay at a cozy hotel in the picturesque Takayama area, surrounded by stunning natural beauty.

## 05 NATURE'S TREASURES IN NAGANO

### Breakfast, Lunch, Dinner

Immerse yourself in the vibrant atmosphere of the [Miyagawa Morning Market](#) in Takayama. Visit the iconic [Matsumoto Castle](#), a national treasure known for its unique black exterior. Gain insight into the art of miso-making with a visit to the [Ishii Miso factory](#). Discover the sprawling [Daio Wasabi Farm](#), an oasis of greenery and the largest wasabi farm in Japan.

## 06 MAJESTIC MT. FUJI AND TOKYO'S ALLURE

### Breakfast, Lunch, Dinner

Head towards Yamanashi to witness the captivating beauty of Mt. Fuji from [Oishi Park](#), a renowned viewing spot. Marvel at the scenic [Lake Kawaguchi](#), reflecting the grandeur of Japan's highest peak. As evening falls, be mesmerized by the breathtaking cherry blossoms along the [Meguro River](#) in Tokyo.

Meguro River. This enchanting location along the riverbank is renowned as one of the best spots to witness the mesmerizing beauty of cherry blossoms illuminated by the soft glow of lanterns.

## 07 TOKYO'S VIBRANCY

### Breakfast, Lunch, Dinner

Immerse yourself in the rich history and spirituality of [Asakusa Sensoji Temple](#) and explore the bustling [Nakamise shopping district](#). Capture a close-up photo with the [Tokyo Skytree](#), an iconic symbol of modern Tokyo. Admire the ethereal beauty of the [Ueno Park Cherry Blossom Tunnel](#), during the cherry blossom season, you'll be greeted by a mesmerizing sight—a pathway lined with cherry trees forming a stunning tunnel of delicate blossoms. Discover the natural serenity of [Shinjuku Gyoen National Garden](#), one of Tokyo's most beloved cherry blossom spots.

As you enter Shinjuku Gyoen, you'll find yourself surrounded by a vast array of cherry trees, showcasing a breathtaking display of delicate pink and white blossoms.

## 08 TOKYO ▶ SINGAPORE

### Breakfast, Meal on Board

Today, you will have some leisure time before we transfer to Narita Airport. Bidding farewell to Japan as you embark on your journey back home.

## 09 HOME SWEET HOME

We hope you have had enjoyed your vacation with [EU Holidays](#) and we look forward seeing you again on your next trip.



# 9天7晚 本州樱花盛宴



目黑川

## 01 新加坡 ▶ 大阪

机上用餐

在新加坡樟宜机场集合，乘搭豪华客机飞往“日出之国”日本。由导游接机后，前往大阪关西机场附近酒店，为您的身心恢复活力。

## 02 大阪的宝藏

早餐，午餐，晚餐

- **大阪城公园** - 著名的樱花名胜地，以其壮观的樱花花海而闻名。
- **梅田天空走廊展望台** - 位于大阪市中心，提供全景的城市美景。
- **道顿堀和心斋桥** - 是大阪最繁华的购物和娱乐区之一。这里有无数的商店、餐厅，让您尽情享受购物和美食的乐趣。

大阪城公园：在这座历史悠久的城堡公园，欣赏绚丽的樱花盛景并留下美丽的照片纪念

## 03 京都的永恒之美

早餐，午餐，晚餐

- **京都清水寺** - 是一处世界遗产，也是著名的樱花名胜地。
- **岚山公园** - 以其优美的自然景观和迷人的樱花而受到游客的喜爱。
- **嵯峨竹林小径** - 您可以漫步在青翠的竹林中，感受宁静与美丽的融合。

京都清水寺：赏心悦目的樱花绽放之景，精致的花朵从山腰上倾泻而下是典型的京都体验

- **银座** - 东京的豪华商业街，您可以在这里尽情购物和漫步。这里有许多高档品牌店、您可以找到各种时尚和奢华的商品。
- **目黑川** - 是日本晚樱的代表地之一，您可以在目黑川沿岸散步，感受浪漫和宁静的氛围。

目黑川是一个因其迷人的夜间樱花观赏而脱颖而出的地点。沿河边这个迷人的地方以其樱花在柔和的灯光下照亮的美丽景色而闻名

## 04 白川乡的魅力

早餐，午餐，晚餐

- **郡上八幡食品模型DIY** - 让您可以亲身体验制作精致的食品模型，感受日本传统的手工艺和美食文化。
- **白川乡** - 被列为世界遗产的目的地，以其独特的建筑风格和风景而闻名。
- **和田屋** - 这是一个了解日本传统建筑和生活方式的机会，让您可以深入了解当地的文化遗产。

## 05 长野的自然宝藏

早餐，午餐，晚餐

- **宫川早市** - 您可以在这里体验到充满活力的日本早市文化。
- **松本城** - 这是一座因其独特的黑色外观而成为国宝的城堡。
- **石井味噌工厂** - 您可以了解到味噌的制作过程和传统工艺，近距离了解日本的传统食品文化。
- **大王山葵农园** - 是一座专门种植葵(wasabi)的农园，了解葵的种植过程和特点，并品尝到新鲜的葵制品。

## 06 壮丽的富士山和东京的魅力

早餐，午餐，晚餐

- **大石公园** - 是富士山最佳观赏点之一，在这里可以欣赏到壮丽的富士山景色。
- **河口湖** - 周围是一个适合散步的地区，您可以沿着湖畔漫步，欣赏湖水的清澈和周围的自然风景。

## 07 东京的活力

早餐，午餐，晚餐

- **浅草寺** - 东京最古老、最著名的寺庙之一，以其壮丽的寺庙建筑和浓厚的文化氛围吸引着众多游客。从浅草寺附近，您可以近距离眺望东京晴空塔，这座标志性的建筑是东京的象征之一，同时也是一个壮丽的观景点。
- **上野公园** - 这些粉色的花朵形成了一个浪漫而宜人的美丽的樱花隧道，为您带来视觉上的愉悦。
- **新宿御苑** - 是一个以樱花闻名的名胜区，您可以在这里散步欣赏绚丽的樱花盛景。

东京：欣赏上野公园樱花隧道的飘渺美景及发现新宿御苑国立公园的自然宁静，沉醉在樱花名胜之中，感受东京的繁华与浪漫之美

## 08 东京 ▶ 新加坡

早餐，机上用餐

今天您可以自由活动直到集合时间出发到机场，随后前往东京 成田机场，与日本告别，结束这段美好的旅程，返回温馨的家。

## 09 甜蜜家园

希望您同欧美假期共享美丽的回忆，期待在下次旅行中再次见到您。



9D6N

# HOKKAIDO BLOSSOM SYMPHONY

9天6晚 北海道花样盛開

JPHSAS | Apr - May 2024

SCAN FOR  
DIGITAL COPY



## COUNTRY FOCUSED

Experience stunning cherry blossoms in Japan's northernmost island. Immerse yourself in the beauty of late blooming cherry blossoms for a memorable Hokkaido adventure.

CHERRY BLOSSOMS GORYOKAKU

I WAS  
HERE!



Wifi  
Router





# HIGHLIGHTS

## HAKODATE

- Fort Goryokaku
- Kanemori Red Brick Warehouse
- Mt. Hakodate (Cable Car Ride)
- Hakodate Morning Market
- Onuma Park

## LAKE TOYA

- Sairo Terrace
- Free helicopter experience
- Mt Showa
- Mt Usu Ropeway (Cable Car Ride)

## NOBORIBETSU

- Jigokudani (Hell Valley)
- Noboribetsu Date Jidaimura

## OTARU

- Otaru Canal
- Otaru Sakaimachi Street
- Music Box Museum
- Kitachi Glass Shop

## SHAKOTAN PENINSULA

- Cape Kamui
- Shimamui Beach

## SAPPORO

- Ishiya Chocolate Factory
- Hokkaido-Jingu Shrine
- Former Hokkaido Government Office
- Sapporo Beer Factory
- Tanukikoji Shopping Arcade
- Outlet Mall

### Service Fee Guideline: (Based on 9D6N)

- JPY9000 per person

### Notes:

- Sakura season varies depending on the location and weather conditions. The exact timing of the cherry blossom bloom can be unpredictable.
- The Company reserves the right to alter tour itineraries, sequence of itineraries, travel arrangements and accommodation due to unforeseen changes, weather conditions, prevailing Covid rules and PCR procedure.
- Tour itinerary, hotel details and inclusions are based on English itinerary.
- Tour is conducted in Mandarin unless otherwise stated.
- A minimum group size of 15 passengers is required for a confirmed departure. Additionally, for groups consisting of 20 or more passengers, a tour leader will be assigned.

### 服务费: (9天6晚)

- 每人9000日元

### 备注:

1. 樱花季节因地理位置和天气条件的不同而有所变化,盛开的确切时间是无法预测的。
2. 行程顺序可能受到不可预测的情况或恶劣天气的情况下,将会更改或以其他景点替代行程。以确保旅程的顺畅,如有改动,恕不另行通知。
3. 本社保留最终权力调整/更改因遇到不可预测的恶劣天气或交通突发情况,受影响的行程内容将不接受任何赔偿/退款。
4. 导游全程以中文解说,除非另有说明。
5. 如中英行程有差异,请以英文行程为主。
6. 确认出发需要至少15名旅客的团体人数,20名以上旅客安排随团领队。

# SAKURA SPECIALS

- Goryokaku Tower
- Hachiman-Zaka Slope and Daisan-Zaka Slope
- Lake Toya
- Temiya Ryokuka Botanical Gardens
- Hokkaido-Jingu Shrine
- Nakajima Park
- Hiraoka Park



# DELICACIES

## Meal Plan

6 Breakfasts 4 Lunches 5 Dinners

## Specialties

- Deluxe Crab Kaiseki Meal
- Japanese BBQ Buffet
- Japanese Izakaya + Sashimi + BBQ Scallop
- Japanese Style Onsen Buffet Dinner

# 4★ HOTELS

- HAOKDATE Hakodate Kokusai
- LAKE TOYA Toyako Manseikaku Hotel

Lakeside Terrace

OTARU Sonia Otaru or Grand Park Otaru

SAPPORO Mercure Hotel Sapporo

\*Note: Hotels subjected to final confirmation. Should there be changes, customers will be offered alternative accommodation similar to this list.



SAPPORO TV TOWER



# 9D6N Hokkaido Blossom Symphony

## 01 SINGAPORE ▶ HAKODATE

Meal on Board

Our vacation begins with a pleasant flight from Singapore to the Land of the Rising Sun, Japan.

## 02 HAKODATE

Dinner

Embark on a remarkable journey to Hokkaido, to explore the fascinating **Fort Goryokaku!** This massive, star-shaped Western-style citadel was built to defend Hokkaido from invasions. Afterward, immerse yourself in the charming atmosphere of **Kanemori Red Brick Warehouse**, a commercial complex comprising four renovated facilities that were originally built as a red brick warehouse in 1909. In the evening, ascend **Mt. Hakodate by cable car\*** and be captivated by the breathtaking panoramic view of the city from the mountaintop.

\* In case of maintenance or bad weather, the bus will be used to go up the mountain instead.

**SAKURA SPECIALS:** Access observation deck of **Goryokaku Tower** for a bird's eye view of cherry blossom trees planted in star-shaped formation. Thereafter, take a walk at **Hachiman-Zaka Slope** and **Daisan-Zaka Slope** known for its splendid rows of cherry blossom trees.

## 03 HAKODATE ▶ LAKE TOYA

Breakfast, Lunch, Dinner

After breakfast, begin our day with a visit to **Hakodate Morning Market** where you can find a variety of delectable fresh Hakodate produce. Thereafter, head to **Onuma Park**, known for its picturesque, island dotted lakes and majestic volcano, Mount Komagatake. Then we will pass by **Mt Showa**, a volcano formed in 1943, one of the youngest active volcanoes in Japan with more than 300 metres high. Next, board the **Mt Usu Ropeway (cable car)\*** leading close to the top of Mount Usu. The upper station's observation deck offers panoramic views of Lake Toya and Showa Shinzan while the second gives you views of the ocean and Mount Usu's largest crater.

\*Note: Subject to weather conditions.

**EU EXCLUSIVE: FREE**

**HELICOPTER EXPERIENCE:** Enjoy a unique experience of having a bird's-eye view of the mesmerizing landscape below.

\*Subject to weather permitting. Should the activity be cancelled, it will not be refunded nor replaced.

**SAKURA SPECIALS:** Take beautiful picture under the cherry blossoms trees at the picturesque **Lake Toya**.

## 04 LAKE TOYA ▶ NOBORIBETSU ▶ OTARU

Breakfast, Lunch, Dinner

This morning, we will head to **Jigokudani (Hell Valley)**, noted for its hot steam vents, sulfurous streams and other volcanic activity. Thereafter, visit to **Noboribetsu Date Jidaimura**, which is a themepark with collection of Edo period style buildings. Continue our journey to Otaru, with visit to the famous **Otaru Canal** and **Otaru's Sakaimachi Street**. There are many shops selling musical boxes, crystal and glassware that mirror the romantic atmosphere of this enchanting town. Visit the **Music Box Museum & Kitachi Glass Shop**.

## 05 OTARU ▶ SHAKOTAN PENINSULA ▶ SAPPORO

Breakfast, Lunch, Dinner

Embark on a picturesque adventure as we start our day with a visit to **Cape Kamui** and **Shimamui Beach**, nestled on Hokkaido's scenic Shakotan peninsula. The crystalline blue waters are renowned for their beauty. Afterward, let's make a delightful stop at **Tanukikoji Shopping Arcade**. This historic arcade has been bustling since the frontier period, offering a charming blend of traditional and modern shops.

**SAKURA SPECIALS:** Visit **Nakajima Park**, one of the most beautiful parks in Hokkaido. In the park, various cherry blossom trees such as double-flowered cherry, sargent cherry, and weeping cherry are planted.

## 06 SAPPORO

Breakfast, Dinner

After breakfast, we will visit to **Hokkaido-Jingu Shrine**, a traditional place of worship for the Japanese "**Shindo**" and the oldest shrine in Hokkaido. Then, head over to **Ishiya Chocolate Factory**, also known as "White Lover Chocolate" Factory. Move on for a photo stop at the **Former Hokkaido Government Office** where the red star on its exterior wall is the symbol of the Hokkaido Development Commission. After lunch, continue to **Sapporo Beer Factory** to learn how the beer is being produced and get to taste their fresh local beer on the spot.

**SAKURA SPECIALS:** **Hokkaido-Jingu Shrine** has been a popular cherry blossom viewing spot since 1900 because you can view 1,400 cherry blossom trees and 250 plum blossom trees that bloom at the same time.

## 07 SAPPORO (FREE DAY)

Breakfast

Today, you will have some leisure time to immerse yourself in the charm of Sapporo, the largest city in Hokkaido. This vibrant and enchanting city, allowing you to tailor your day according to your interests and preferences. Enjoy your delightful day in Sapporo!

## 08 SAPPORO ▶ CHITOSE ▶ SINGAPORE

Breakfast, Meal on Board

After breakfast, stop at an **Outlet Mall** for some shopping before transfer to the airport for your flight home!

**SAKURA AND PLUM SPECIALS:**

A Blossoming Haven - Exploring the Plum Grove in Hiraoka Park. A sprawling plum grove spanning over 6.5 hectares. This enchanting grove boasts approximately 1,200 Bungo-type plum trees.

## 09 HOME SWEET HOME

We hope you have had enjoyed your vacation with EU Holidays and we look forward seeing you again on your next trip.



# 9天6晚 北海道花样盛开



五棱郭塔



神威岬和岛武意海岸

## 01 新加坡 ▶ 函馆

机上用餐

在新加坡樟宜机场集合，乘搭豪华客机飞往“日出之国”日本。

• **独家安排：**直升机体验：享受在高空观赏美丽的景色（\*视天气状况而定，若有突发状况，将不由其他行程取代或退款）。

## 02 函馆

晚餐

- **五棱郭塔** - 日本唯一的古老西式星形城堡，此地也是春季欣赏樱花及秋季欣赏红叶最佳之地。
- **金森仓库群** - 金森红砖仓库是由四座设施构成的综合商业设施，由1909年建造的红砖仓库改建而成。
- **函馆山(缆车)** - 函馆景色之美在于城市的两边呈现出了两条弧形的海岸线，冬天的景色更是美不胜收。（\*遇到维修或天气不好会坐巴士上山来取代）

**樱花特别安排：**享受函馆最美丽的樱花美景在**五棱郭塔展望台**和**十三板坡之大三板**。

## 03 函馆 ▶ 洞爷湖

早餐，午餐，晚餐

- **函馆朝市** - 北海道最热闹的集贸市场之一，朝市有大大小小200多家店铺和400多家水产店，形成了一个很有当地特色的大型水产市场。
- **大沼公园** - 活火山驹岳以及壮阔的湖岛风光是非常能代表北海道雄伟景色的地方。
- **昭和新山** - 日本最年轻的火山昭和新山，属于支笏洞爷国立公园。在1943年12月到1945年9月期间发生喷发，形成了这座300多米高的火山。
- **有珠火山口(缆车)** - 搭乘缆车上有珠山欣赏昭和新山及明治新山与远眺洞爷湖，这里是不能错过的风景，感受大自然的鬼斧神工。（\*如因天气不允许而关闭，将由熊牧场取代）。

**樱花特别安排：**在**洞爷湖畔**享受美丽的樱花美景。

## 04 洞爷湖 ▶ 登别 ▶ 小樽

早餐，午餐，晚餐

- **登别地狱谷** - 泡沫从温泉口和喷气孔喷涌而出，泉水翻滚沸腾的景象，如同“恶魔栖息的地狱”一般。
- **登别伊达时代村** - 这个历史村庄将您带回到日本江户时代。漫步于村庄保存完好的街道上，沉浸在这个曾经的时代的丰富文化和传统之中。
- **小樽运河** - 小樽著名的观光胜地，运河旁有许多石砌仓库群。
- **小樽北一硝子** - 小樽以玻璃之城而闻名，明治和大正时代在小樽一度兴盛的鲑鱼渔业使用玻璃制造的浮球、油灯等，小樽玻璃的制造便始于此。
- **小樽音乐盒** - 小樽最具盛名的音乐盒本堂。

## 05 小樽 ▶ 积丹半岛 ▶ 札幌

早餐，午餐，晚餐

- **神威岬和岛武意海岸** - 位于北海道西部，深入日本海的半岛。海岸线绵延42公里，还可欣赏拥有“积丹蓝”之称的“神威岬”的绝美风光。
- **札幌狸小路商业步行街** - 这是一个繁忙的购物街，有各种商店和餐馆供您选择，您可以购买各类商品，并品尝美食。

**樱花特别安排：**在位于札幌市中心的中岛公园欣赏樱花。

## 06 札幌

早餐，晚餐

- **北海道神宫** - 北海道最大的神宫之一。每年春天，这座神秘的神社成为欣赏樱花和梅花绚丽绽放的理想场所。
- **北海道旧道厅** - 是1888年所建的巴洛克式建筑物，现为北海道重要的地标。
- **札幌啤酒博物馆** - 古老建筑风格，以及美味的啤酒，每年都吸引着国内外数以万计的观光客前来参观游览。
- **白色恋人巧克力博物馆** - 这是一间以欧洲风格为主题的建筑物以及可买白色恋人巧克力饼干。

**樱花与梅花盛宴：**感受着花香弥漫的空气，北海道神宫成为了一场花的盛宴。您可以在这里欣赏到粉色的樱花和红白相间的梅花共同绽放的壮丽景象。

## 07 札幌(自由行)

早餐

今天您将拥有一整天的自由时间，尽情享受北海道最大的城市札幌的魅力！您可以根据自己的兴趣和喜好来度过美好的一天。

## 08 札幌 ▶ 新千岁 ▶ 新加坡

早餐，机上用餐

- **北广岛Outlet** - 在此您能够尽情地购物，为离开北海道前做最后的冲刺疯狂扫货。
- **平冈公园** - 占地6.5公顷。这里栽植了约1200株“丰后性”（白色和红色）梅树。平冈公园的梅林通常在每年的5月8日左右绽放（具体日期会因天气变化而有所调整），并能欣赏到大约两周的花期。

**樱花与梅花盛宴：**在这段迷人的时光里，可以漫步梅林，空气中弥漫着淡淡的芳香，让你亲身感受北海道春天的来临，拥抱梅花盛开的短暂美景。这里是远离喧嚣的天堂，让你沉浸在自然的辉煌中。

## 09 甜蜜家园

希望您同欧美假期共享美丽的回忆，期待在下次旅行中再次见到您。



# 9D7N SCENIC KYUSHU +2N FREE IN TOKYO

9天7晚 九州风情+2晚东京

JPSNKW | Nov 2023 – Mar 2024

SCAN FOR  
DIGITAL COPY



## COUNTRY FOCUSED

Explore the highlights of southwestern Japan.  
Immerse yourself in the diverse experiences of  
boat rides, natural wonders, cultural sites, and  
local markets.

YUTOKU INARI SHRINE IN KASHIMA CITY, SAGA

I WAS  
HERE!



Wifi  
Router



Relaxed

PACE



Active



# HIGHLIGHTS

## FUKUOKA

- Yanagawa Boat Ride
- Ichiran no Mori
- Mitsui Shopping Park Lalaport

## OITA

- Beppuwan Ropeway
- Beppu Sea Hell Valley
- Hot Sand Bath

## MIYAZAKI

- Aoshima Shrine
- Takachiho Gorge

## KAGOSHIMA

- Kakuida Black Vinegar Museum
- Sakurajima Onsen Foot Bath
- Senganen Garden

## KUMAMOTO

- Kusasenri
- Aso Daikanbo
- Kumamoto Castle
- Johsaien

## SAGA

- Seasonal Fruit Picking
- Yutoku Inari Shrine
- Mount Mifuneyama
- Yobuko Morning Market

### Service Fee Guideline:

(Based on 8D6N)

- JPY9000 per person

### Notes:

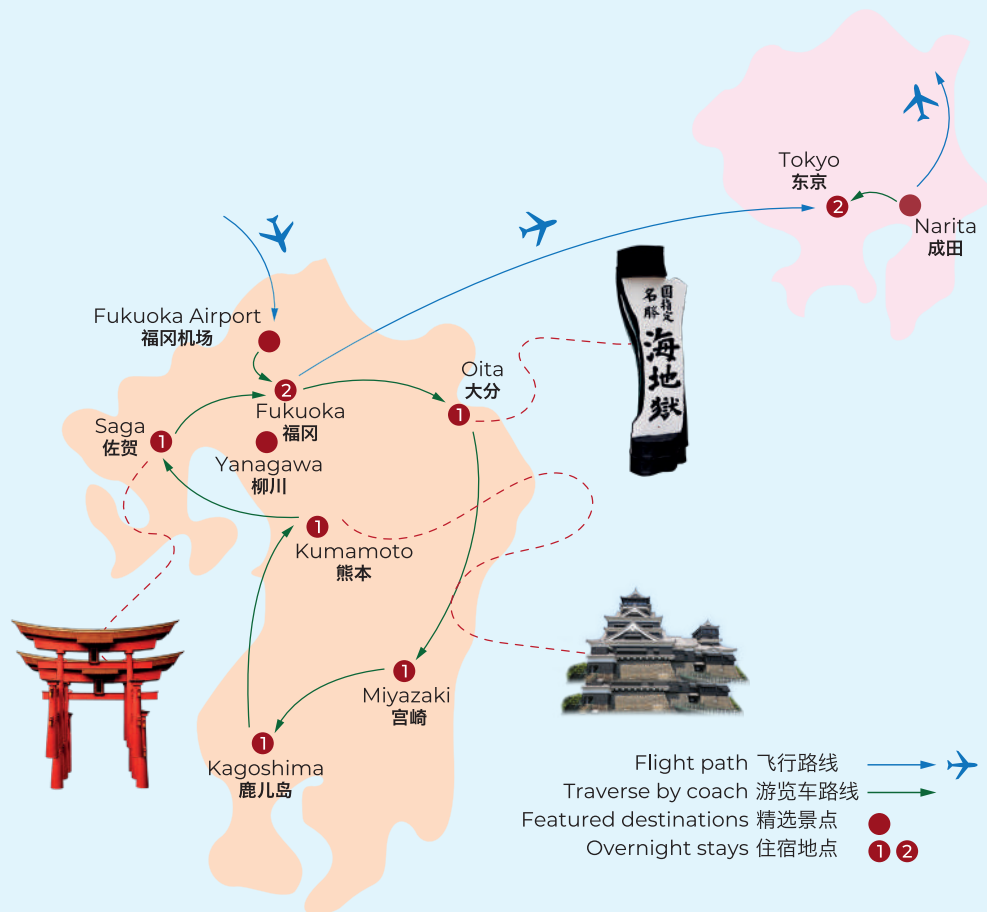
- The sequence of the itinerary, flight schedules and hotels are subject to change without prior notice in the event of unforeseen circumstances.
- During major events, accommodation may be relocated without prior notice.
- All pictures shown are for illustration purpose only.
- A minimum group size of 15 passengers is required for a confirmed departure. Additionally, for groups consisting of 20 or more passengers, a tour leader will be assigned.
- Tour is conducted in Mandarin unless otherwise stated.

### 服务费: (8天6晚)

- 每人9000日元

### 备注:

1. 行程顺序可能受到不可预测的情况或恶劣天气的情况下, 将会更改或以其他景点替代行程。以确保旅程的顺畅, 如有改动, 恕不另行通知。
2. 在重大活动期间, 住宿可能会搬迁, 恕不另行通知。
3. 所有显示的图片仅用于说明目的。
4. 确认出发需要至少15名旅客的团体人数, 20名以上旅客安排随团领队。
5. 导游全程以中文解说, 除非另有说明。



## DELICACIES

### Meal Plan

9 Breakfasts, 5 Lunches, 5 Dinners

### Specialties

- Yanagawa Unagi Rice
- Beppu "Hell" Steamed Meal
- Japanese Kaiseki or Buffet
- Black Vinegar Cuisine
- Miyazaki Beef
- Cuttlefish Sashimi
- Ichiran Ramen

## 4★ HOTELS



OITA Hotel & Resorts Beppuwan

MIYAZAKI ANA Miyazaki Hotel

KAGOSHIMA Kagoshima Sun Royal Hotel

KUMAMOTO Kumamoto Hotel Castle



SAGA Saga Ryutoen

FUKUOKA Hotel Monterey Fukuoka

TOKYO Washington Hotel Shinjuku

\*Note: Hotels subject to final confirmation. Should there be changes, customers will be offered accommodation similar to this list.



KUMAMOTO CASTLE



# 9D7N Scenic Kyushu+2N Free In Tokyo

## 01 SINGAPORE ▶ FUKUOKA

Meal on Board

Our vacation begins with a pleasant flight from Singapore to the Land of the Rising Sun, Japan.

## 02 FUKUOKA ▶ OITA

Dinner-Hotel

Upon arrival, transfer to [Oita](#) and free at your own leisure before dinner.

## 03 OITA ▶ MIYAZAKI

Breakfast, Beppu "Hell" Steamed Lunch, Dinner-Hotel

After a sumptuous breakfast, we will take a [Beppu Ropeway](#) that you can enjoy the panoramic view from Mt. Tsurumi and seasonal beauty. After lunch, proceed to the [Hells of Beppu](#) taking in sights of its steaming ponds of various colours, bubbling mud pools and other hydrothermal activities. Lastly, relaxing yourself through soaking in [Hot Sand Bath](#) where you lay down and be covered by the natural heated sand while gazing out to the sea in front of you.

## 04 MIYAZAKI ▶ KAGOSHIMA

Breakfast, Black Vinegar Cuisine Lunch, Dinner-Hotel

Today morning visit, we will proceed to the [Aoshima Shrine](#) after breakfast. Located on an island, the Aoshima Shrine is only accessible by bridge over the clear ocean waters. Next, head over to [Kakuida Black Vinegar Museum](#) to learn the traditional techniques of making and storing black vinegar. After lunch, proceed to Sakurajima, Kagoshima. Relax and enjoy the [Foot bath](#) before heading to Sengan-en. The Sengan-en is a traditional garden and stately home in Kagoshima built in 1658 with the active Sakurajima volcano in the background.

## 05 KAGOSHIMA ▶ KUMAMOTO

Breakfast, Miyazaki Beef Lunch, Dinner-Japanese Set

Start your day with [Takachiho Gorge](#), a narrow chasm cut through the rock by the Gokase River, and wander along the walking trail to enjoy the beautiful nature. After that, proceed to Kuranseri. [Kusasenri](#) is a vast grassy plain which offers great views of the volcanically

active Nakadake Peak, also features a large pond and horses can be seen grazing on the land. Next, proceed to [Aso Daikanbo](#) whereby it is one of the peaks of Aso northern somma, located northeast of Uchimaki Onsen. Continue, we will visit the [Kumamoto Castle](#) (outside) and continue a stroll of [Johsaien](#) which just at the foot of Kumamoto Castle.

## 06 KUMAMOTO ▶ SAGA

Breakfast, Yanagawa Unagi Rice Lunch, Dinner-Hotel  
Begin your day with a [Seasonal Fruit Picking activity](#) (Depending on the season & weather). embark on a relaxing [Yanagawa River Cruise](#) where you will find yourself immersing in the beautiful surrounding scenery. Also, you can enjoy a special meal of Unagi Rice while on the river cruise ride. After that, paying a visit to the [Yutoku Inari Shrine](#), one of Japan's top three shrines dedicated to Inari alongside Fushimi Inari Shrine in Kyoto and Toyokawa. The shrine is built on the steep hillside of a valley with its main hall standing on tall wooden beams 18 metres above the valley floor. After lunch, make a trip to [Mount Mifuneyama](#), a 150,000-square metre park boasting stunning autumn foliage, which will also be illuminated at night as a part of



UMI JIGOKU HOT SPRING IN BEPPU

## 07 SAGA ▶ FUKUOKA

Breakfast, Cuttlefish Sashimi Lunch  
After breakfast, start your tour with [Yobuko Morning Market](#), one of the Japan's three biggest morning markets. Opened first during the Taisho period sometime between 1912-1926, the



SIGHTSEEING IN YANAGAWA

market is full of stalls selling all kinds of fresh seafood & vegetables, including the renowned local Yobuko squid. Next, pay a visit to [Ichiran no Mori](#). Ichirannomori is the only Ichiran ramen shop in Japan that also has a workshop. At the Ichirannomori store, the noodles produced on the day are delivered directly to the store for customers to eat. After lunch, its more shopping time thereafter at the newly opened [Mitsui Shopping Park LaLaport Fukuoka](#) before check in hotel.

## 08 FUKUOKA

Breakfast

Free day at leisure to explore Fukuoka on your own.

If flying with Japan Airlines, you will directly fly to Tokyo without the 08 free day & overnight in Fukuoka.

## 09 FUKUOKA ▶ TOKYO

Breakfast

Today we will fly to Tokyo and enjoy some free time to explore the city at leisure.

## 10 TOKYO

Breakfast

Free day at leisure to explore Tokyo on your own.

## 11 TOKYO ▶ SINGAPORE

Breakfast, Meal on Board

Bid farewell to this beautiful country and transfer to the airport for your flight home.

We hope you enjoyed your vacation with EU Holidays and we look forward to seeing you again on your next trip.





## 行程亮点

### 大分

- 别府湾游览 (缆车)
- 别府海地狱
- 沙浴体验

### 宫崎

- 青岛神社
- 高千穗峡

### 鹿儿岛

- 黑醋工厂
- 樱岛足浴
- 仙岩园

### 熊本

- 草千里
- 大观峰
- 熊本城
- 城彩苑

### 福岡

- 柳川泛舟
- 一兰之森
- 福岡 LaLaport 购物中心

### 佐贺

- 摘水果
- 祐德稻荷神社
- 御船山乐园
- 呼子早市

# 9天7晚 九州风情+2晚东京

- **樱岛足浴** - 樱岛熔岩公园内有全长100米的免费露天足浴，不仅可以眺望樱岛的雄姿和锦江湾的美景，可以洗去旅途的疲劳。
- **仙岩园** - 是位于吉野町的藩主庭园。另一个名字是异花园。这是一个以樱岛为背景的花园。

## 05 鹿儿岛 ▶ 熊本

早餐, 宫崎午餐, 晚餐

- **高千穗峡** - 熔岩浆凝固后经过五箇瀬川长时间侵蚀切割下成V字的峡谷，在步道上漫步欣赏美丽神秘的景观。
- **草千里** - 是位于阿苏环绕风景线上的约1Km的草原。由背景中的帽子岳和雨水形成的池塘创造出的雄伟景观。绿树成荫的夏天，梦幻般的雪白的冬天，以及色彩斑斓的四季。
- **大观峰** - 海拔为935.9m，是北外轮山的最高峰，是天然展望台，在这里可以看到阿苏街道的全貌，是到阿苏必去的极富盛名的观光点。
- **熊本城 (外观)** - 日本三大城堡之一。
- **城彩苑** - 位于日本三大名城之一，熊本城脚下的樱之马场。作为熊本的象征性建筑，熊本城担负着宣传当地饮食文化和历史传统，提高熊本城及城下町魅力的重任。



天神美食摊

- **一兰之森店** - 是全日本的一兰拉面店中，唯一一家同时设有工场的店铺。在一兰之森店，会将当天生产的面条直接送到店铺里供客人食用。
- **福岡LaLaport购物中心** - 于2022年4月25日正式开幕！除了大家熟知的LaLaport 复合式商场之外，一比一高达也首度进驻福岡，多样化服务俨然成为福岡新地标！

## 08 福岡

早餐

您可以尽情探索福岡这个充满活力和魅力的城市。

如果搭乘日本航空 将直接飞往东京没有第8天福岡自由活动和住宿

## 06 熊本 ▶ 佐贺

早餐, 鳗鱼饭午餐, 晚餐

- **季节水果采摘** - 视天气和季节而决定
- **柳川泛舟** - 乘坐小舟沿着护城河顺流而下，在河面上游的名胜，也是最能体现柳川市的魅力。品尝柳川最有名的柳川鳗鱼饭午餐。
- **祐德稻荷神社** - 日本三大稻荷神社之一。
- **御船山乐园** - 因其形态似唐船也得名唐船山，坐落在西边山麓的便是御船山乐园。以中国山水画一般的御船山断崖为背景，春天五千株樱花，五万株杜鹃构成了一幅美丽的画卷。

## 09 福岡 ▶ 东京

早餐

今天我们将飞往东京，探索自由之旅。

## 10 东京

早餐

您可以探索市区的繁忙购物街、品味当地美食。

## 11 东京 ▶ 新加坡

早餐, 机上用餐

早餐后，最后集合告别日本，乘搭客机飞返新加坡，希望您同欧美假期共享美丽的回忆，期待在下次旅行中再次见到您。

## 01 新加坡 ▶ 福岡

机上用餐

在新加坡樟宜机场集合，乘搭豪华客机飞往“日出之国”日本。

## 02 福岡 ▶ 大分

酒店晚餐

抵达后前往大分的酒店充分休息。

## 03 大分 ▶ 宫崎

早餐, 地狱蒸料理午餐, 晚餐

- **别府湾游览 (缆车)** - 乘坐可容纳101人的九州最大级的缆车，10分钟就可以到达海拔1300米的世界。从山上可以尽情享受山下雄伟的景色和四季不同的自然风景。
- **别府海地狱** - 别府地狱温泉位于日本大分县中部的别府县，其中以别府八大地狱温泉最为著名。
- **沙浴体验** - 你可亲身尝试卧在湿和热的热砂上，让你全身盖上热砂。

## 04 宫崎 ▶ 鹿儿岛

早餐, 黑醋料理午餐, 晚餐

- **青岛神社** - 在宫崎县宫崎市的南部，漂浮在以弧形延伸的青岛海岸洋面的青岛。
- **黑醋博物馆** - 参观日本黑醋的制作过程。

## 07 佐贺 ▶ 福岡

早餐, 鱿鱼刺身午餐

- **呼子早市** - 日本三大早市有80多年历史，各种海鲜应有尽有。



祐德稻荷神社



# japan Saga, Kyushu



Food



Nature



Festive





**Flexi Holidays**  
\*Daily Departure\*

Book your  
Flexi holidays &  
Customise your dream  
vacation with  
EU Holidays!

SCAN FOR  
DIGITAL COPY

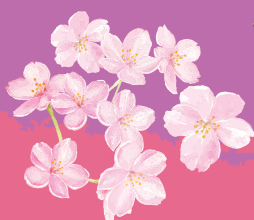


# Konnichiwa Japan



## Self Drive

- Accommodation with daily breakfast
- Car Rental with itinerary planning & map code provided
- Dinner / Lunch as per itinerary



## Private Tour

- Mini tour per day 10hrs usage with driver guide
- Accommodation with daily breakfast
- Entrance fee as mention in itinerary
- Dinner / Lunch as per itinerary
- Return airport transfers

**5D4N Osaka Easy Pace**  
~Kyoto ~ Nara ~ Osaka

**5D4N Japan Highlights**  
~ Mt Fuji ~ Matsumoto  
~ Karuizawa

**6D5N Southern Hokkaido  
Japan Minitour**  
~ Noboribetsu ~ Hakodate  
~ Lake Toya ~ Kyogoku/ Otaru

**5D4N Central + Eastern Hokkaido**

~ Otaru ~ Taisetsu ~ Akan ~ Obihiro ~ Sapporo City

**5D4N Okinawa**

~ Okinawa City ~ Ryukyu Village ~ Onna Village  
~ Okinawa Outlet ~ Churaumi Aquarium ~

**6D5N Picturesque Scenic Shikoku**

~ Tokushima ~ xf ~ Matsuyama ~ Takamatsu ~ Osaka



## Free & Easy



**4D3N Tokyo Free & Easy**

**4D3N Osaka Free & Easy**

**5D4N Kochi Shimanto Nakatsu**

- 4 nights hotel stay with breakfast
- Shikoku Rail Pass & My Yu Bus ticket
- Exclusive travel guide book
- Kochi Airport Shuttle City Center Bus

**Japan rail passes, Shinkansen  
tickets booking available**



# TERMS & CONDITIONS

## Tour Booking Terms & Conditions

You and your travelling companions are deemed to have read, understood and accepted the following Terms and Conditions. EU Holidays Pte Ltd shall be referred to as "the Company" in the following:

### 1. RESERVATION, DEPOSIT & FULL PAYMENT

- 1.1 If your minimum deposit is less than the required amount, kindly top up the difference within the next two (2) days.

Tour Type	Minimum Deposit required per person (SGD)
All Group Tour Packages (Except Cruise)	\$1,000.00
All Group Tour Package with Domestic Flight & Arctic Packages	\$1,500.00
Cruise & Special departure Group Tour Packages, South America Tour Packages	\$2,000.00
Free & Easy Packages	80% of total tour fare
Tour organised by third (3rd) parties (e.g. luxury cruise, overseas land operator, airline etc.)	Amount per Terms & Conditions stipulated by principal suppliers

- 1.2 Payment of deposit does not constitute confirmation of the tour. All group tours are subject to a minimum group size (as determined by the Company) in order for the confirmation to be effected and for the departure to be finalised.
- 1.3 Full payment is required no later than twenty-one (21) days prior to departure. In case of tours in peak season, full payment must be made one month before departure. If full payment is not received by the stipulated deadline, the Company reserves the right to forfeit the deposit and cancel the reservation. In such an event, the cancellation fee as stated in Section 2 is payable by the Customer.
- 1.4 By making deposit and balance payment, it is deemed that you have read, understood and accepted the Tour Booking Terms and Conditions in the booking form.
- 1.5 The Company reserves the right to request for a top-up on initial deposit for immediate issuance of air tickets, to avoid incurring additional surcharges.
- 1.6 Customers must top-up the deposits for ticket issuance as and when the air-tickets are required to be issued by the airlines at the stipulated dateline without prior notice. Failure to do so, the Company has the right to cancel the tour and the deposit will be forfeited.
- 1.7 Any amendment within **fourteen (14) days** or after tickets have been issued, the amendment fee would be the same as the cancellation fee as stipulated in the Terms and Conditions.

### 2. CANCELLATION BY THE CUSTOMER

- 2.1 Cancellation of booking must be made in writing or in person to avoid any misunderstanding.
- 2.2 The following cancellation fees apply once any group tour package booking is made:

No. of days between departure and receipt of cancellation notice	Minimum Cancellation fee per person (SGD)
35 working days or more	100% of minimum Deposit Amount
15 to 34 working days	100% of minimum Deposit Amount or 50% of tour fare + Taxes, whichever is higher
08 to 14 working days	100% of minimum Deposit Amount or 75% of tour fare + Taxes, whichever is higher
07 working days and below	Full tour fare + Taxes

- 2.3 The above cancellation fees apply if the air-tickets are not issued. If the air-tickets are issued, the value of the air-tickets will be added onto the cancellation fees. The Company reserves the right to issue air-tickets without prior notice. If the deposit amount is insufficient to cover the cancellation fee, the Customer must pay for the difference.
- 2.4 'Working days' refer to Mondays to Fridays, excluding public holidays.
- 2.5 For Free and Easy packages, administrative fees and / or minimum one (1) night hotel rate will be imposed for those travel documents

not issued. Upon issuance of travel documents, changes will not be allowed and have no refund value.

- 2.6 For any cancellation of one customer in a twin/double sharing room, the other customer sharing the same room will need to top up an additional single supplement charge, unless the customer who cancelled had paid the full tour fare and taxes as the cancellation fee.

### 3. CANCELLATION BY THE COMPANY

- 3.1 The Company acts as an agent for service suppliers. After deposit or full payment has been made, all arrangements are still subject to final confirmation by service suppliers. At times due to low subscription for a group tour, the Company may choose to cancel the entire tour fourteen (14) days prior to departure.
- 3.2 The Company shall also not be held liable for any contingent costs incurred by the Customer arising from the cancellation.
- 3.3 The Company may recommend alternative tours either to the same destination or other tours, based on the current tour fare of that cancellation period. All prior special discounts given will be not extended for the alternative tours. Should the Customer decide not to accept the alternatives, a full refund on the amount paid by the Customer will be made accordingly by the Company without further obligation or liabilities on the part of the Company and that the Customer shall be deemed to have agreed to release the Company from all liabilities or damages in connection with the cancellation. There shall be no claim for inconvenience, loss of leave and transportation cost due to the cancellation of tour.

### 4. REFUND POLICY

- 4.1 No refunds will be made with respect to accommodation, meals, sightseeing tours or any other services included in the tour fare but not utilised by the Customer, either in part or full, or when the Customer amends, cancels or otherwise changes any arrangements after commencement of the tour.
- 4.2 All refunds will be made within fourteen (14) working days in a form of cheque. For credit card payments, refunds will be made through the credit card company.
- 4.3 Air tickets with refund value will only be refunded to Customers within **fourteen (14) working days** after the respective airlines have refunded to the Company. The standard processing period for air-ticket refunds vary from three (3) to six (6) months (subject to individual airlines). **However, Group and Promotional tickets are non-refundable.**
- 4.4 During peak period, the refund process may be longer due to increase in transactions.

### 5. AMENDMENT TO BOOKINGS (REQUESTED BY PASSENGERS)

- 5.1 For any changes in departure date or tour type, cancellation fees apply as listed under Section 2 on Cancellation by the Customer.
- 5.2 For every request made regardless of whether any previous amendment was confirmed by airlines, hotel or otherwise, there will be a minimum fee of \$250.00 per person per amendment. This does not include any other fees imposed by the airlines, ground operator or hotel.
- 5.3 A postponement of tour by the Customer for any reason is considered as cancellation. Under such circumstances, the above Cancellation Policies will apply accordingly.
- 5.4 Any changes made by the Customer to the existing booking must be in writing or in person at least fourteen (14) days before the tour, after which strictly NO amendments are allowed, or cancellation fee applies.
- 5.5 Any replacement or change of passengers will be considered as a cancellation and not an amendment. This term is applicable to all cases, including but not restricted to medical and pregnancy cases.

### 6. AMENDMENT TO TOUR ITINERARY BY COMPANY

The Company makes reasonable effort to avoid changes in the itinerary. However, the Company reserves the right to make minor changes at any time due to unforeseen circumstances, especially during peak periods or in the event of other circumstances beyond our control.

### 7. EXTENSION OF STAY / DEVIATION

- 7.1 Extension of stay may be permitted at the end of tour, subject to the restriction of the air ticket, seat availability and hotel confirmation prior to the commencement of the tour. All requests must be made before issuance of air tickets. If the extension of stay / deviation is unable to be confirmed three (3) weeks prior to the group's departure date, the passenger is deemed to stick to the original tour schedule. In the event that the original schedule has been changed by the Company, any extra cost will be borne by the Customer.
- 7.2 Cancellation fee is also applicable if the Customer cancels the booking because the extension / deviation is unable to be confirmed prior to departure.
- 7.3 Extension of stay / deviation will be at the Customer's own expense and transfer to the airport will not be provided.
- 7.4 It is the Customer's responsibility to hold firm confirmation of their return flight and to re-confirm their flight 72 hours prior to their return date.
- 7.5 The air ticket issued is a special ticket, restricted to the specific airline only. It is non-negotiable, non-endorseable, non-reissuable, non-refundable & non-reroutable. Any alteration in routing or dates by the Customer is solely at his/her own risk. The Company and its associated agents will not be held responsible for any inconvenience caused and extra expenses incurred. No refunds will be made for any unused air ticket, accommodation, meals, or sightseeing in part or full.

### 8. TRAVEL DOCUMENTS, TRAVEL INSURANCE & TRAVEL VOUCHERS

- 8.1 **Passport and other Travel Documents**  
It is the Customer's sole responsibility to ensure that he / she has a valid passport with minimum six (6) months validity from the date of scheduled return to Singapore, as well as the necessary visas, vaccinations, health certificates and all necessary travel documents as required by various government authorities of the destinations of travel.
- 8.2 **Visa**  
The Customer may seek advice from the Company on visa application; however, it is the Customer's own responsibility to obtain a valid visa.
- 8.2.1 If for any reason, application for visa or exit permit is rejected, full refund minus a \$250.00 administrative fee (excluding visa application fees paid to the respective embassies) will be made if the result of the rejection is submitted to the Company at least forty five (45) days prior to departure. If less than forty-five (45) days' notice is given, relevant cancellation fees as stated under the section Cancellation by the Customer will be applied.
- 8.2.2 It is the Customer's responsibility to check that multi-entry Visas have the correct entry dates and destinations before travelling. Please be aware that for some itineraries you may travel through a country without making an overnight stop but you will still require a Visa to enter/exit the country.
- 8.2.3 In consideration of the interests of other passengers in the same group, the Company strongly discourages all passengers from applying for Visa Upon Arrival at the destination country. The Company takes no responsibility for being unable to wait for passengers who apply for Visa Upon Arrival at the Customs.
- 8.2.4 The Company will not be responsible for any expenses, reimbursement or refund of the tour fare if the Customer is deported or refused entry by immigration authorities on the tour for whatever reasons, including improper travel documents, quarantine, custom regulations, possession of unlawful items or irregularities that may cause harm or damage to person or property.
- 8.2.5 For non-Singapore passport holders, please request for the Company to check on Visa requirements. The Company renders assistance in Visa application wherever possible. The Company cannot, however, guarantee the approval of Visa applications. This service is subject to (auxiliary) fees. Please check with the Company on the amount.

### 8.3 Travel Insurance

- 8.3.1 Arrangement of travel insurance coverage is strongly recommended with respect to unforeseen circumstances such as flight cancellation, trip cancellation, loss of deposit, baggage, personal



# TERMS & CONDITIONS

- accident, injury, illness, etc. Under no circumstances shall the Company be construed as a carrier under a contract for safe carriage of the Customer or his / her baggage and other personal belongings.
- 8.3.2 The Company shall not be responsible for any loss or damage in relation to flight cancellation, trip cancellation, loss of personal baggage, accidents, injuries and illness.
- 8.3.3 Should there be any amendment to the date and duration of travel, it is the Customer's responsibility to inform the travel insurance company to amend the date and duration of the insurance coverage.
- 8.3.4 The Company will be pleased to assist in the enquiries of any travel insurance and related matters.
- 8.4 **Travel Vouchers**  
The Company issues travel vouchers from time to time as part of its promotional activities. The Terms and Conditions for the redemption of travel vouchers are clearly spelt out in the appropriate documents and shall be binding on the Customer.
9. **GENERAL MATTERS RELATING TO TOURS**
- 9.1 **Accommodation**  
Accommodation is as specified in the tour brochure / itinerary / tour booking form. In the event the specified accommodation is not available, every effort will be made to scout for an alternative in another accommodation of similar standard. Hotel room sizes, facilities and services may vary in different country. Accommodation for adults is based on twin-share, double or triple-share bedroom. Different room type might not be on the same level. Single room occupancy comes with an additional cost.
- 9.1.1 Room size is generally slightly smaller than what you may be used to. Space is precious commodity in Europe and especially in its busiest cities. Many of the buildings will have been in existence for hundreds of years and were not built with the modern traveller in mind. The upside is that they are usually in excellent locations and have a fascinating story to tell.
- 9.1.2 Bed sizes may also differ. In Europe, King and Queen-sized beds are very rare. Here, double beds are the norm and you may often find that a double room consists of two twin beds pushed together instead of a full bed, made up with one set of linen. You may also find that twin beds will be placed very close together.
- 9.1.3 A triple room is the same size as a twin-share room. The third bed is always a roll-away bed or sofa bed added into the room. As a result, you may feel that the room is very cramped and small.
- 9.1.4 Europeans are very socially and environmentally conscious, especially about air-conditioning in Europe. During autumn and winter seasons, the central air-conditioning will be switched off in the hotel rooms. So, do not expect that the air-conditioning will be switched on in the room. You may open the windows to let cold air in, where possible.
- 9.2 **Special Request**  
If there are any requests regarding special meals, dietary requirements, adjoining rooms, flight seating arrangement and so on, please inform the Company upon booking. However, such requests are strictly subject to confirmation and availability by the airlines/hotels. There are no halal meals on tour.
- 9.3 **Baggage**  
The Customer is usually allowed check-in baggage not exceeding twenty (20) kilograms. Only one piece of hand-luggage not exceeding seven (7) kilograms is allowed on board the aircraft. Excess baggage charges must be borne by the Customer and are subject to individual airlines' company policy.
- 9.4 **Meals**
- 9.4.1 Meals, including meals served on flights, are as indicated in the tour brochure / itinerary / tour booking form. In the event where in-flight meals are not served due to whatever reasons, there shall be no refund or replacement.
- 9.4.2 You and your travelling companions will generally dine together at a designated time. Table will often vary in size and free seating enables you to dine with family members or new travelling companions each evening. A breakfast buffet is included daily and will reflect the local regions tastes and culture. Very occasionally, an early

- departure may result in a light breakfast box for you to take away if applicable. Lunches are sometimes included but are usually an opportunity for the guest to enjoy some free time to visit a local café, bar or restaurant and eat where the locals do. Your tour manager will be able to provide you with a range of options to suit all tastes and preferences.
- 9.5 **Seat Rotation**  
For the convenience of all members of the group, passengers may be requested to rotate their seating arrangements on the coach during the period of the tour. Please cooperate when requested to do so by the tour manager / tour leader / guide.
- 9.6 **Motor-coach**  
For selected itineraries with Wi-Fi on coach using 3G mobile network, please be aware that the connection is slower than standard broadband and at times may not be available. It is good for checking emails, web browsing and updating social media accounts, but less so for streaming videos or large photo uploads.
- 9.7 **Single Room Supplement**  
Please note that customers paying for single room occupancy supplement charge will be allocated a single room. The single room supplement charge as indicated in the booking form applies. Hotels will try their best to upgrade twin/double room for guests who opt for single room occupancy, but this may not be possible in the event when hotel occupancy rate is high.
- 9.8 **Suggested Excursion**  
Optional list may be subject to change, depending on the time you are travelling or local circumstances including weather and days of the week. Further information will be provided by your Tour Manager / Guides during the tour.
- 9.9 **Flights**  
The tour group might be comprised of flights on different airlines, so the Tour Manager may not be on the same flight as the group. If the group is not on the same flight as the Tour Manager, the group will have to proceed to transit on their own. There will be a check-in staff at Singapore Changi Airport to assist the group to check in if the Tour Manager is not flying together.
10. **PRICING POLICIES**
- 10.1 **Tour Fare Includes**  
Return economy class group tour air ticket, local transport, accommodation, admission fees, meals and sightseeing programme as stipulated in the tour brochure / itinerary / tour booking form.
- 10.2 **Tour Fare Excludes**  
Airport taxes, airport security taxes, airline insurance surcharges, fuel taxes, visa fees, travel insurance, customs user fees as specified by the airlines and airport authorities; local transfer not stated in the itinerary (e.g. free & easy, deviation), laundry, excess baggage charges, beverages, room services, gratuities to drivers and tour managers / local guides and tips to hotel porters (if any); and personal expenses. Please refer to the Company for visa fees, gratuities to drivers and tour managers / local guides, and tips to hotel porters.
- 10.3 **Cancellation Fee**  
For Clause 2 – Cancellation By The Customer - tour fare refers to the selling tour fare plus airport taxes, airport security taxes, airline insurance surcharges and fuel taxes.
- 10.4 **Child Fare**  
Child fare is applicable to children below twelve (12) years old on the scheduled date of departure & departure date from Singapore. The child fare is based on a twin-sharing accommodation with two adults and no additional bed will be provided. A surcharge will be imposed where an extra bed is required for the child or where the child occupies a room with only one adult.
- 10.5 **Mode of Payment**  
Payment may be made in cash, by NETS, PAYNOW, AXS, cheques or credit cards. Cheques will only be accepted if presented to the Company at least seven (7) working days before scheduled tour departure. Credit card payment may incur additional surcharge for special promotion packages, you may refer to our staff for confirmation. Overseas Bank transfer may incur additional surcharge and to be borne by the Customer.

## 11. RESPONSIBILITY

- 11.1 The Company acts as an agent for the carriers, transportation companies, hotels and other principals of the tour packages. The Company accepts no responsibility for any injuries, losses, damages, accidents, flight cancellations, delays, theft, quarantine, customs regulations, strikes, weather hazards, political unrest, changes in itineraries, deportation or refusal of entry by Immigration Authorities resulting from improper travel documents, possession of unlawful items or irregularities that may cause damage to person or property. Any losses and/or expenses incurred are the responsibility of the passenger. Ensuring all proper travel documentation is in place is the sole responsibility of the Customer.
- 11.2 The failure of the Customer to follow reasonable instructions, including but not limited to check-in and check-out places or times or other cause and the losses and/or expenses resulting therefore shall be borne by the Customer.
- 11.3 The Company reserves the right to:
- 11.3.1 Alter tour itineraries, travel arrangements, accommodation due to unforeseen changes.
- 11.3.2 Cancel any reservations prior to departure for reasons, including but not limited to insufficient number of participants. The Company will recommend alternative tours, preferably to the same destination or to other destinations. Should the Customer decide not to accept the alternatives, the deposit or tour fare is to be refunded without further obligation on the part of the Company, upon the Customer's surrender to the Company of all documents issued by the Company for the purpose of the tour package.
- 11.3.3 Require any individual to withdraw from the tour if it is deemed that his/her behaviour is detrimental to or incompatible with the health, safety, interests, harmony and welfare of the other tour participants and the tour group as a whole. Under such circumstances, the Company shall be under no liability thereafter to any such person.
- 11.3.4 To specify the language in which the tour guide will conduct commentary in.
- 11.4 No tour guides, tour managers, tour leaders or other employees or agents of the Company are authorised to commit the Company to any liability and the Company shall not be bound by any statement or representation unless it is in writing and signed by a Management Executive of the Company.
- 11.5 All verbal agreements must be stated in writing and duly signed by the Manager.
- 11.6 The Company reserves the right to take photographs and videos of the Customer while he/she is on tour with the Company, to be used for advertising in brochures or publicity materials without obtaining any further consent from the Customer.
- 11.7 All tour fares for the respective tour packages are correct at the time of reservation. The Company reserves the right to revise the tour fares and to determine the date of commencement of such revised tour fares.

## 12. COMPLAINT & CLAIM

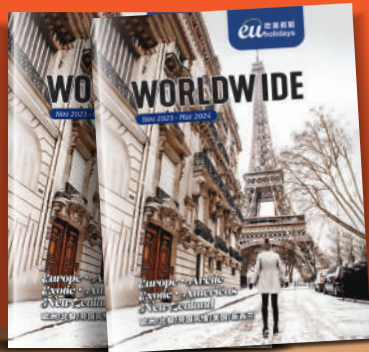
Should you encounter a problem during your tour, kindly inform the EU Holidays Tour Manager or local supplier immediately, who will try to make things right. If the matter was not resolved locally, please submit a feedback to EU Holidays in writing within seven (7) days from the date of return. It is important to provide us the information quickly. Please quote your booking reference number and all relevant information. Failure to follow this procedure may delay or deny us the opportunity to investigate and rectify the problem, which may affect the way your complaint is dealt with and your rights under this contract.

## 13. MISCELLANEOUS

The Company reserves the right to change, amend, insert or delete any Tour Booking Terms and Conditions contained within this document, as the case may be, without prior notice. The Tour Booking Terms and Conditions complement those Terms and Conditions contained in the relevant documents provided by third (3rd) party service providers such as airlines or cruise tickets, hotel check-ins etc.







**Suntec Singapore Convention & Exhibition Centre**

1 Raffles Boulevard, Level 2 Crescent 2, Singapore 039593

(Beside Link Bridge to Marina Square/Opposite Don Don Donki #02-379-387)

☎ +65 6958 8888    📱 @euholidays    🌐 www.euholidays.com.sg    ✉ sales@euholidays.com.sg